

Wing Lake Group Goes International

Mrs. Mark Nielsen is among Wing Lake women helping to plan a second annual Flower Show sponsored by Wing Lake Branch of the Woman's National Farm and Garden Association. Affair will take place Tuesday, May 22, in Stewart's Garden Shop on Walnut Lake Road, 2 to 6 p.m.

Theme of the Flower Show will be "Expression, International", and since Mrs. William J. Ellenbrink, a past president of the Michigan Division, WNGA, has been selected to go to Holland as the recipient of the Frysinger Scholarship, she will be honored by the special arrangements done featuring Dutch bulbs.

Projects abroad will feature "Hope for a Korean Village"—of special interest to the Wing Lake Branch since it is their own project. There will be a punch bowl and cookies Tuesday afternoon and the public is invited.

Besides Mrs. Nielsen, other committee women include Mrs.

Edgar Thorne, Mrs. Glen Berry, Mrs. Dale Holl, Mrs. Lee Carter, Mrs. Willis Beard and Mrs. Ben Stephenson.



MRS. MARK NEILSON

COMING EVENTS

(Continued from 1-C)

Sunday, May 20
FOUNDEES DAY TEA—Mr. and Mrs. Henry Scripps Booth hosts in Cranbrook House, Lone Pine Road, 3 to 6 p.m.

Monday, May 21
REPUBLICAN WOMAN'S CLUB OF BLOOMFIELD HILLS—Regular meeting in home of Mrs. John Esslinger, 4015 W. Orchard Hill Drive, 1 p.m.
ROTARY ANNS OF BIRMINGHAM—Meeting in home of Mrs. William Bralley, 19300 Riverside Drive, 1 p.m.

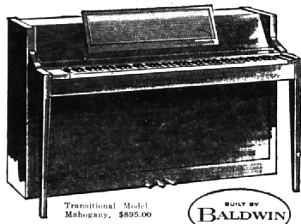
Tuesday, May 22
PHILEMON CLUB—Dinner and sewing in home of Mrs. Burton Phillips, 683 Wallace, Birmingham, 1 p.m.
INTERNATIONAL LEAGUE FOR PEACE AND FREEDOM—Annual meeting in home of Mrs. Angus McVay, 715 Wibleton Drive, Birmingham, 8 p.m.
ALPHA OMIKRON TH ALUMNAE—Luncheon in home of Mrs. William Boyles, 959 Kennesaw, Birmingham, 1 p.m.
WING LAKE BRANCH, WNGA—Second annual Flower Show, Stewart's Garden Shop, Walnut Lake Road, 2 to 6 p.m.

Wednesday, May 23
CHILD RESEARCH CENTER LEAGUE—Annual spring luncheon, Crystal Ballroom, Sheraton-Cadillac Hotel, 12:15 p.m.
REPUBLICAN WOMAN'S CLUB—Beverly Hills, Bingham Farms and Franklin, membership tea in home of Mrs. John Longley, 32851 Bingham Road, 1 to 4 p.m.
MOMS OF AMERICA—National convention in the Henrose Hotel Detroit, May 23-25.

Friday, May 25
ANNUAL MAY PARTY, Florence Schoolfield Young—Red Run Country Club, 7:30 p.m.
DETROIT COUNTRY DAY SCHOOL—Opening of three-day Fun Fair and Carnival, 1 to 11 p.m.
BEVERLY SCHOOL—Reception honoring Miss Lydia Terrill, 2 to 4 p.m. at the school.

"The outstanding tonal quality of Baldwin pianos has been extremely satisfying to me for years."

Karl Haas

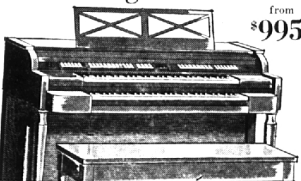


Smiley Bros.

The best place to shop for Piano or Organ

- Here you can compare tone and touch of the world famous Baldwin and Aeolian-Casals Consoles . . . the illustrious Weber Grand and Consoles and our own budget priced Spinets and Consoles new from \$350.00.
- Terms to suit you at 6%.
- Our Comparison Room offers the opportunity to try many other makes that are only slightly used and sharply reduced in price. Steinway, Grinnell, Wurliitzer, Everett, Story & Clark, Sohmer, from \$445.00. Guaranteed. Delivered with bench.

Baldwin Organs



from \$995

Baldwin Model 46, Mahogany, \$2645

- FREE HOME DEMONSTRATION
- Two 61-note manuals
 - 32-note pedal board
 - Leslie Speakers Included Built-in
 - Percussion (optional)
 - Trade Allowance on any instrument
 - Complimentary lessons with each organ sold

USED ORGANS . . . From \$295

New LOWREY Starlet

- 2 Manual Spinnet Organ, with percussion
- 13-note pedal board

\$595

Smiley Bros. 115 S. WOODWARD
Birmingham MI 7-1177
Open Even, Saturday Till 5:30

MSUO Dedicates Kresge Library

Michigan State University Oakland dedicated on Saturday its new \$15 million Kresge Library. Presentation of the building was made by Sebastian S. Kresge, 94 year old founder of the Kresge store chain and creator of the Kresge Foundation which provided the money for the building.

Kresge, who made a trip from Florida especially for the occasion, was introduced by James C. Zeller, retired engineering vice president of Chrysler Corp. and vice president of the MSUO Foundation.

Zeller said that Kresge, one of the nation's most important and most successful business men, and MSUO, had two primary things in common. Both believe in good hard work and fundamental principles, he said, citing MSUO's rigorous liberal arts curriculum, its high standards, and its concentration on the things that contribute to learning.

The building was accepted by C. Allen Harlan, member of the MSUO Board of Trustees, and chairman of a new committee

May 17, 1962

THE BIRMINGHAM (MICH.) ECCENTRIC 5-C

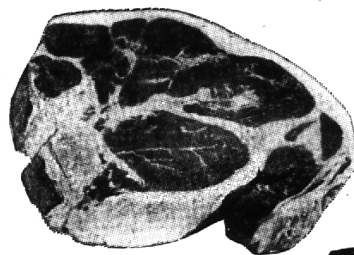
Aboard Thetis Bay

Jon N. Lamoreaux, seaman, USN, son of Mr. and Mrs. James

Lamoreaux of 20724 Kenworthy Circle, Birmingham, is serving aboard the amphibious assault ship USS Thetis Bay.

He and his family are proud of his service and get the books they want. The building accommodates 1200 students, and it can be enlarged to three times its original size in future years.

The library is on the highest point on the campus and will be its dominant feature as well as the focal point of the 300-foot long mall running north and south through the academic area.



Steak Sale!

FULLY MATURED, GRAIN-FED BEEF . . . "Super-Right" Beef Is Selected for Superb Taste and Tenderness . . . ONE QUALITY—NO CONFUSION—ONE PRICE AS ADVERTISED

ROUND (FULL CUT)

SIRLOIN OR CUBE

PORTERHOUSE OR CHIP

FRESH Mushrooms lb. 49c



MAINE, U. S. No. 1 GRADE

Potatoes 25 LB. BAG 99c

California Lemons 140 SIZE 6 FOR 35c
McIntosh Apples MICH. 3 LB. BAG 49c
Pascal Celery FLORIDA 30-SIZE . . . STALK 29c
Red Radishes . . . 2 8-OUNCE CELLO BAGS 25c

FROZEN FOOD VALUES

Treesweet Lemonade 6-OZ. CAN 10c

A&P LEAF OR CHOPPED Spinach 2 10-OZ. PKGS. 29c
MURCH'S Grape Drink OR APPLE DRINK . . . 6-OZ. CAN 10c
Sunnyfield Waffles . . . 5-OZ. PKG. 10c
Morton's Dinner SALISBURY STEAK . . . 11-OZ. PKG. 49c

WISCONSIN

Brick Cheese LB. 39c

VICTORY BRAND Cream Cheese 3-OZ. PKG. 8-OZ. PKG. 25c
Blue Bonnet Margarine 3 1-LB. CTNS. 79c
Biscuits Pillsbury or Ballard TUBE OF 10 10c
Keyko Margarine 4-TS 3 1-LB. CTNS. 89c

EIGHT O'CLOCK COFFEE 3-LB. BAG 1-LB. BAG 49c
Get Free Measuring Spoon with Purchase of Custom Ground A&P Coffees

FRUIT COCKTAIL . . 3 29-OZ. CANS 89c

PRUNE PLUMS . . 4 29-OZ. CANS 99c
KITCHEN CHARM Waxed Paper . . 2 2-ROLL PKGS. 69c
BROADCAST Vienna Sausage 2 4-OZ. CANS 39c
Northern Towels 2-CT. 39c

Pillsbury Layer Cake Mixes
Orange 17-OZ. Pineapple 16-OZ. 20-OZ. CAN 39c
Pink Lemonade 20-OZ. CAN 39c
Chocolate-Fudge 16-OZ. 21-OZ. CAN 49c
White 16-OZ. Yellow 17-OZ. 21-OZ. CAN 49c
Double Dutch 19½-OZ. 21½-OZ. 39c
Banana Sundae 21½-OZ. 39c

Raisin or Apricot

Pies YOUR CHOICE JANE PARKER EACH 39c



We are happy to join the U.S. Department of Agriculture in saluting the contributions of American farmers to the Nation's welfare.

For the Bathroom Delsey Tissue 2 2-Roll Pkgs. 49c	5c Off Label Ivory Soap 3 Large Cakes 48c	5c Off Label Ivory Soap 4 Med. Size 38c	All prices in this ad effective thru Saturday, May 19th in all Eastern Michigan A&P Super Markets		
Personal Size Ivory Soap 12 Cakes 79c	Premium in Package Duz 23-Oz. Pkg. 57c 42½-Oz. Pkg. 99c	Save at A&P Oxydol Giant Pkg. 79c 2 Large Pkgs. . . . 67c	Grand for Dishes Dreft 2 Large Pkgs. 67c	For Walls and Woodwork Spic and Span 16-Oz. Pkg. 29c 54-Oz. Pkg. 93c	5c Off Label Crisco 3 Lb. Can 83c

shop savings MODELS sales-service HOBBY SUPPLIES
parking facilities
CRAFTS STAMPS COINS OVER 50,000 ITEMS
TRAIN PLANE BOATS
22524 WOODWARD AVENUE
FERDALE 20, MICHIGAN phone LI-3-2242

"SUPER-RIGHT" QUALITY GROUND BEEF Prepared Fresh Many Times Every Day LB. 49c

"SUPER-RIGHT" BONELESS Strip Steaks . . . LB. 1.59
"SUPER-RIGHT" BONELESS Rump Roast . . . LB. 89c
"SUPER-RIGHT" Sliced Calves' Liver . . . LB. 79c
"SUPER-RIGHT" SKINLESS All Meat Franks . . . 1-LB. PKG. 47c
"SUPER-RIGHT" Pork Sausage . . . 3 1-LB. ROLLS 1.00
"SUPER-RIGHT" SMOKED OR FRESH Liver Sausage LB. 39c

CAPN JOHN'S Haddock, Cod or Ocean Perch Fish Fillets . . . LB. 45c
Fresh Perch Fillets . . . LB. 43c
Fish Sticks CAPN JOHN'S 3 10-OZ. PKGS. 1.00
Halibut Steaks LB. 59c

FOR CEREALS OR COFFEE Half and Half QUART SIZE 39c WITH THIS COUPON
Good Thru Saturday, May 19th at all A&P Super Markets in Eastern Michigan ONE PER FAMILY — ADULTS ONLY
COME SEE . . . YOU'LL SAVE AT A&P

CHOICE OF 5 FLAVORS Marvel Ice Cream HALF GALLON 49c WITH THIS COUPON
Good Thru Saturday, May 19th at all A&P Super Markets in Eastern Michigan ONE PER FAMILY — ADULTS ONLY
COME SEE . . . YOU'LL SAVE AT A&P

NATIONAL BISCUIT Honey Grahams 1-LB. BOX 29c WITH THIS COUPON
Good Thru Saturday, May 19th at all A&P Super Markets in Eastern Michigan ONE PER FAMILY — ADULTS ONLY
COME SEE . . . YOU'LL SAVE AT A&P

KING SIZE Rinso Blue 25c OFF 87c WITH THIS LABEL
Good Thru Saturday, May 19th at all A&P Super Markets in Eastern Michigan ONE PER FAMILY — ADULTS ONLY
COME SEE . . . YOU'LL SAVE AT A&P

THE GREAT ATLANTIC & PACIFIC TEA COMPANY, INC. A&P Super Markets AMERICA'S DEPENDABLE FOOD MERCHANT SINCE 1859