

PLANNING TO GOOF OFF THIS WEEK-END?

Then You'd Better Not Read (Or Let Your Wife Read) What's Doing This Week-End At

HAZARD #1

Now, you've done without extra shelves for a long time but she'll just have to have them this weekend!



K-V SHELVES

But don't feel badly, they go up quickly, easily. You merely attach slotted standards to wall, slide brackets into slots then place wood or glass shelves across brackets. Real sturdy, attractive. Don't be too sure that when the job is done that you'll be able to call your time your own.

SPECIAL THRU SAT., MAY 12

SHELF BRACKETS

| Length | Brass | Anachrome |
|--------|-------------------|-------------------|
| 6" | REG. 30 SPEC. .47 | REG. 45 SPEC. .29 |
| 8" | REG. 30 SPEC. .44 | REG. 30 SPEC. .33 |
| 10" | REG. 30 SPEC. .54 | REG. 35 SPEC. .39 |
| 12" | REG. 30 SPEC. .69 | REG. 40 SPEC. .44 |

SHELF STANDARDS

| Length | Brass | Anachrome |
|--------|--------------------------|--------------------------|
| 4 ft. | REG. \$1.65 SPEC. \$1.33 | REG. \$1.05 SPEC. .77 |
| 6 ft. | REG. \$1.65 SPEC. \$1.69 | REG. \$1.40 SPEC. \$1.33 |

HAZARD #2

Be careful, this item leads to washing the house, etc.

DELUXE, CADDY WATER-FLOW HOSE REEL



Reg. \$16.75
SPECIAL THRU SAT. 5/12
ONLY \$13.95

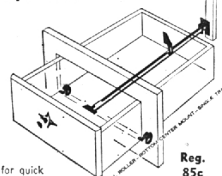
It's a beautiful, polished aluminum frame, plated steel reel, easy rolling rubber tires. Roll your garden hose from faucet to faucet to storage. Hook up, unroll. Padded connector hose included. Can be used for taking loads (garbage cans, etc.) by removing reel. Capacity of reel, 200' plastic hose, 100' rubber hose.

A.L. Damman Co.

HAZARD #3

You can bet your boots. The prettier the day the MORE she'll want you to put in . . .

Ajax, Mono-Rail All Roller DRAWER SLIDES



But then, they are designed for quick and easy installation. You merely have to install one roller at front bottom corners, a track from cabinet front to back and a drawer support with roller that runs in the track. Fits most cabinet drawers. Supports up to 30 lbs. Don't count on taking off yet, there's lots more.

Reg. \$5c
SPECIAL THRU SATURDAY 5/12
ONLY . . 75c



HAZARD #4

A poor alternate to teeing off or fishing but, you'll be outdoors anyway.



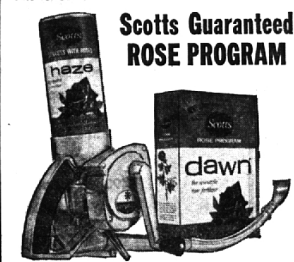
ROWE'L-EZY Lawn & Garden EDGERS

SPECIAL THRU SAT. 5/12
Model 300
For heavy duty trimming. Wide solid rubber wheel. Self sharpening blade cuts in either direction. 48" handle.
Reg. \$6.29
\$4.77

Model 40
Rubber tired driving wheel. Self sharpening blade. Cuts in either direction. 42" handle.
Reg. \$2.59
\$2.29

HAZARD #7

No hazard threatened your weekend yet? Then keep her away from the roses or you'll be using this for sure.



Scott's Guaranteed ROSE PROGRAM

There was a time when having beautiful roses took the labor of Hercules and the luck of an Irishman. Not since Scott's developed Dawn (the once a month fertilizer) to meet the unique nutritional demands of roses. Haze (the once a week insect and disease control) and the Zephyr to wait a week inevitable cloud of HAZE to coat those leaves above and below. So neat and easy you'll not even work up a sweat - you'll be a dead duck for another project.

ROSE PROGRAM SPECIAL

spring through fall program for 12 rose bushes
2 cans of Haze \$2.90
1 box of Dawn \$1.95
1 Zephyr \$14.95
Total Value \$19.80
\$14.80

HAZARD #5

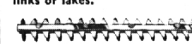
No matter how you look at it, this item spells work.



Reg. \$6.99
K.D. 3 Cu. Ft.
HOME WHEELBARROW
However, has a nice, semi-pneumatic tire for easier going. Comfortable rubber grips. 32"x26" hopper. Real sturdy, so don't count on it breaking down.
SPECIAL THUR SAT. 5-12
\$5.99

HAZARD #6

It always happens. Start cutting the hedge and you'll see everyone taking off for the links or lakes.



STARFLYTE, 2-WAY HEDGE TRIMMER

But, it could be worse. Imagine doing it with hand shears. This double edged blade cuts a 12" swath through the thickest hedge in either direction with no sweat. Has a Swedish Blue Steel cutting bar, 32 teeth. Rugged motor. Should get the job done quickly. But, don't get the clubs or tackle out yet.

MODEL 1370
SPECIAL THRU SAT. 5/12
Reg. \$23.95 Now
\$19.88

HAZARD #9

No hazard? Just try sitting down in one red flag at a bull. She'll soon have you back to work.

GERSTEN ALUMINUM LEISURE FURNITURE



As you rest off you can bet she'll proceed to enjoy that cool, comfortable, colorful "Maximum Comfort" chair with finest quality, wrap-around plastic. Heavy resilient, that recovers immediately. Available in white, blue, turquoise, periwinkle.
SPECIAL THRU SAT. 5/12
FOLDING CHAISE
26 1/2" wide by 77" long overall. 3 position for utmost comfort. Concealed adjustment mechanism.
REG. 17.95 NOW \$16.16

FOLDING ROCKER
38 1/2" high by 24" wide overall. Seat is 18" wide, 16" deep. Wonder if the "White House" had something to do with the introduction of this model.
REG. 13.95 NOW \$12.56

FOLDING CHAIR
35 1/2" high by 23 1/2" wide overall. Seat is 18" wide by 16" deep. Each of these chairs is fabricated of extra sturdy aluminum. Beautifully finished in all details.
REG. 9.95 NOW \$8.96

HAZARD #8

If you need these, you're sunk! They're "work" by another name.



Gibraltar Asphalt PATCH-MIX

No heating, no mixing. Just sweep area, spread and roll down. No work! The blasted bag weighs 80 lbs.
Reg. \$1.98
\$1.66

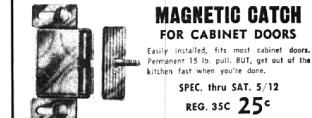


READY-MIX CEMENT

All you do is mix water with it and you've got great concrete. No work? Having a VS 10 lb. bag around is hardly recreation.
Reg. \$1.20
99c

HAZARD #10

This is a sleeper. It'll nail you for sure. Better cut it out so she won't see it.



MAGNETIC CATCH FOR CABINET DOORS

Easily installed, fits most cabinet doors. Permanent 15 lb. pull. All get out of the kitchen fast when you're done.
SPECIAL THRU SAT. 5/12
REG. 35c **25c**

HAZARD #11

Here's a twist—get HER to work. Just tell her how easy it is. No Soap?



CAMP'S LATEX CONCRETE

With Camp's Latex Concrete she can repair cracked and freeze damaged surfaces of concrete without chipping, priming or curing. Apply as thin as 1/16" or more than 1". Use indoors or out. Repairs concrete, brick, stone, slate, stucco, all types of masonry surfaces. Hardens to tougher consistency than the concrete itself.
SPECIAL THRU SAT. 5/12
LARGE KIT Reg. \$3.95
Covers 10 lbs. powdered cement, 1 qt. of latex silicone liquid. We like 100 to 300 ft. of average cracks.
\$3.39

HAZARD #12

According to the maker, you turn it on and take off for happy hunting grounds elsewhere. If you're not careful those happy hunting grounds are apt to be peppy working rounds.



EVERRAIN AUTOMATIC WATER TIMER
MODEL #E110
SPECIAL THRU SAT. 5/12
Reg. \$3.69
\$3.29
You could make a big production out of this by taking along a pencil and paper to make it look like a research project. However, it will take some imagination to keep looking busy. The blasted thing shuts itself off automatically. It ends, quivers and overwaters and operates under and compensates for variations in pressure. Has 5 settings from light to heavy sprinkling. Handy for filling pools. Built to last for years.

HAZARD #13

Great stuff but it leads to painting. Oh well, maybe you can watch TV Sunday eve.



WIPE AWAY CRACKS FOREVER WITH TUFF-KOTE

If you've just got to fix some cracks . . . Tuff-Kote spans cracks, does not fill 'em. The brush it on both sides of crack, apply glass fabric, brush on second coat then smooth and feather edges. Permanent crack repair job disappears forever under coat of paint. Can be used indoors or out. Industrially proved over 20 years. Fast way of all to cure cracks as they won't reappear.
for interiors use
Krack-Kote
PTS. \$1.79 QTS. \$2.79
for exteriors use
Tuff-Kote
PTS. \$1.89 QTS. \$2.89
Glass Fabric 3 1/2"x18", 98c
3 1/2"x36", \$1.75

HAZARD #14

One way to get away from "togetherness" — put up



GUTTER PARTS

Sublimely fittings of 28 oz. galvanized steel. We carry all the size units, straps, and downspouts, spikes, etc. you'll need to get the job done properly. Have the 10' lengths below.

SPECIAL THRU SAT. 5-12

| | | |
|----------------------|-------------|---------------|
| 10' K GUTTER | Reg. 89c | 79c |
| ROUND 10' DOWNSPOUT | Reg. \$1.09 | \$1.35 |
| SQUARE 10' DOWNSPOUT | Reg. \$1.39 | \$1.79 |
| SQUARE 3" ELBOW | Reg. 40c | 29c |
| ROUND 3" ELBOW | Reg. 35c | 24c |

HAZARD #15

As though there weren't enough to do there's always the garage to sweep out.



PAVEMENT PALMYRA BRUSHES

One comparison — these brushes come with a stout 60" handle you can really lean on. The brushes are heavily filled with best grade Palmyra fiber—4" trimmed.
SPECIAL THRU SAT. 5/12
18" Reg. \$1.98
\$2.49
24" Reg. \$2.66
\$3.25

HAZARD #16

You can always duck out by saying you're going to Damman's to look at their beautiful line of . . .

TORO • YARDMAN • JACOBSON POWER MOWERS

The only danger here is that you'll probably wind up trading in your old mower on one of those "BEAUTIFUL" mowers and you know darned well you'll just have to try it out on your lawn. And that is apt to lead to the inescapable fact that . . .
NOW IS THE TIME TO APPLY Scott's Bonus, Scuti, Halts
BONUS to knock out the dandelions, plantain, etc., SCUTI to overcome the effects of snow mold (those dead, brown areas), HALTS to prevent crabgrass. And let's face it you can't wish this stuff on, you've got to walk it.

HAZARD #17

This item is supposed to save time. Time for other work of course. Oh well, have you considered an apartment?



STARFLYTE EDGE-TRIMMER

Cuts a 6" swath. A snap to convert from edge trimmer to trimmer. Has unique anti-snap blade guard, micro-adjust 17" to 27" height of cut settings. Powerful 8.000 r.p.m. motor with exclusive designed gear train that produces 200% more torque. Extra wide rubber wheels.
REG. \$29.95
NOW \$25.66
SPECIAL THRU SAT. 5/12

A.L. Damman Co.

WITH FOUR FINE STORES
BIRMINGHAM, 4066 W. Maple (at Telegraph), MI 4-0111
DETROIT, 9541 Hayes (1 mile north of Harper), LA 7-0600
EAST DETROIT, 22522 Greater (2 blocks south of 9 Mile)
MT. CLEMENS, 35351 Groesbeck (at 15 Mile), 791-1444
YOUR CHARGE ACCOUNT INVITED
FREE DELIVERY SERVICE
OPEN FRIDAY EVENINGS TO 9