

IT'S THEISEN'S FOR YOUR GARDENING NEEDS

- Lawn Seed
- Fertilizers
- Insecticides
- Flowering Shrubs
- Evergreens
- Bulbs

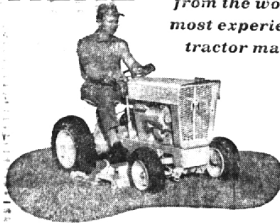
ROSE BUSHES
A
SPECIALTY

THEISEN'S GARDEN MART

3826 N. Woodward, Royal Oak
LI 9-4422
9 to 9 daily—9:30 to 6 Sundays

HERE

from the world's
most experienced
tractor maker



the International®

CUB CADET

- Amazing new handling ease
- Comfortable seat
- Ample leg room
- Responsive light-touch steering
- Seven-horsepower engine
- Trouble-free all-gear transmission
- Big capacity equipment for every job

Enjoy more carefree time for leisure with today's most advanced lawn and garden tractor

Mow up to an acre an hour... save endless drudgery with sturdy 42-inch front blade. The Cub Cadet introduces a new dimension of comfort, riding ease, and reliability. And there's a full line of equipment to speed every job.

PRICED AS LOW AS **\$585.00**

We Take Trade-Ins, Credit Terms

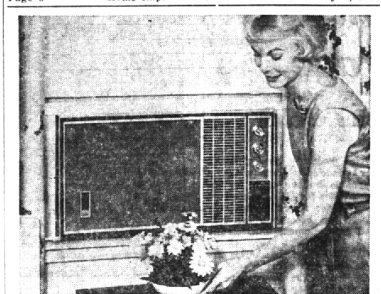
KING BROS.

Pontiac Road at Opdyke

FE 4-1112

FE 4-0734

INTERNATIONAL HARVESTER



Keep yourself and family cool and refreshed this spring and summer with room air conditioners. New models, such as the 1962 unit above, fit flush with windows, are compact yet more powerful than ever and can be mounted quickly and easily. They control both temperature and humidity.

Air Conditioners Give More Than Mere Cooling

It's always fair weather inside a house that's equipped with modern room air conditioners. Strategically placed throughout a home, today's room-size air conditioners offer a practical solution to the home comfort problem.

HERE ARE a few of the benefits that quality room air conditioners provide:

1. Cool air. New models provide more cooling power in smaller packages than ever before. Improved design in cooling fans and more efficient compressors make possible smaller, quieter units that look attractive in any home.
2. Dehumidified air. Today's room air conditioners add to summer comfort by removing excess moisture from the air.
3. Filtered air. Modern filters trap quantities of dust, coal, pollen and other impurities often found in so-called "fresh air." The house and its furnishings stay cleaner, allergy sufferers feel better.
4. Air movement. Adjustable grilles or deflectors and improved fan design distribute cool dry air more evenly. Moving air helps the body lose heat more rapidly.
5. Quiet operation. With improved insulation, modern electric room air conditioners operate more quietly than ever. In addition, because windows are closed, disturbing outside noises are blocked out.
6. Exhaust cycle. Even on cool days, room air conditioners can be used to remove stale, smoky air from a room and bring in filtered air from outside.

MODERN room air conditioners built to last. Since tough materials and special finishes protect certain units from the harshest weather for years, families should select their room air conditioners carefully.

Appliance dealers can determine how much cooling power is needed in terms of Btu's. Once this is established, families can choose the models with the special features that best suit their particular needs.

Models are available for installation through a wall, or in virtually any type of window. Some can be carried or rolled from window to window to serve wherever they are needed most.

Build Tall Fence For Sound Buffer On Noisy Street

To create a sound buffer between a house and a busy street, build a tall fence along the property line.

Even an 8- or 10-foot-high fence will look airy and graceful if designed with vertical louvers. Douglas fir or western red cedar can be used for the sound-buffering fence, and it can be painted or stained to match the house siding.

Then, develop the area between the fence and the house into a charming courtyard to give the home a gracious exterior entryway.

New York, Cincinnati, Denver and Salt Lake City represent the "average American city" for home heating. Duluth, Minn., is said to have the most difficult heating problem in the U.S.

Home construction costs can be trimmed if the lowest grade lumber suitable for a job is used. Americans have always used better lumber than needed, primarily because lumber has always been one of the least costly items used in building a home.

Now, however, with building costs as important when home costs are figured, "utility" grade Douglas fir and west coast hemlock lumber is permitted under FHA rules for a wide variety of uses in home construction.

It can be used for studs, framing, joists, rafters, sheathing, subfloors and many other jobs about the home. This grade of fir or hemlock can be bought for as much as \$25 a thousand feet below the cost of standard grade lumber.

ACTUALLY utility grade lumber has stiffness and strength, the two things most needed for home framing and sheathing jobs.

Both Douglas fir and west coast hemlock lumber can be bought at most lumber yards.

Choose Flower Boxes For Waist-High Garden

Waist-high gardens are growing more and more popular with the gardener who is looking for the easy way out when it comes to planting his flower garden from seed.

Flower boxes or pot-proof redwood planters made of cinder blocks, bricks, or chimney flue tiles can all be built up above ground level to make gardening a breeze.

SOIL PREPARATION and drainage are the secrets to success in this type of a garden. The bottom of the container should have a 1-inch hole for every square foot.

To further ensure good drainage, a one to two inch layer of coarse gravel should be placed in the bottom of the container.

Soil is filled over the drainage material to about one inch from the rim of the container. Soil should be at least six inches deep.

THE CONTAINER filled, press the soil down gently. . . do not pack it. . . and sprinkle with a garden hose until water drips from the bottom.

Allow the soil to dry for several hours. If it settles unevenly, fill in a little more before planting.

What to plant depends on your color preferences, the size of the container and where it is to be displayed. For a sunny location, try planting annuals from seed.

YELLOW NASTURTIUMS, or red and white petunias will give a delightful effect trailing over the side of your planter. The possibilities are unlimited with annuals.

After several leaves have developed on your seedlings, thin them out, leaving the directions on the back of the seed packet.

EVERY TWO or three weeks, mix a liquid fertilizer following the manufacturer's directions. Small quantities of fertilizer are

needed at frequent intervals because many nutrients are washed out through the bottom of the containers.

Water regularly once a week so that the water drains from the bottom of your containers. If the plants wither in the sun, you know that more water is needed.

SO GARDEN the carefree way. . . plant your seeds in a waist-high planter.

There is enough sawtimber standing in the nation's forests to build a six-room home for every man, woman and child now living in the country.

ELLIS INC. SINCE 1945 MODERNIZATION

Family—Activity—Recreation
Rooms & Porches a Specialty.

PORCH ENCLOSURES



FREE ESTIMATES

MI 6-4188

KITCHENS—BATHROOMS
ROOFING—SIDING

Most any alteration and repairs

TERMS

Eccentric Want Ads Get Results
Ask for Miss Classified, MI 4-1100

Molls Fine Draperies and Carpets Since 1941



Oakland County's Most Complete DRAPERY STORE

Over 20,000 Yards of Fabric in Stock
Plus 800 Samples for Special Order!

YOU'LL FIND IT HERE
at the price you want to pay!

PRICE RANGE 60c to \$9.00 Yd.

CUSTOM MADE OR BY THE YARD
EXPERIENCED DECORATORS TO ADVISE YOU

SPECIAL
FRI—SAT.—MON.

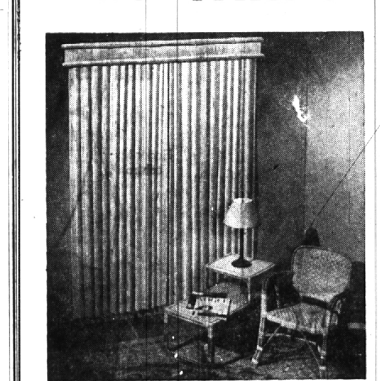
One Traverse Road at Half Price With Each \$10 Purchase

Open Monday and Friday
Evenings 'til 9

1666 S. Telegraph
FE 4-0516

Molls

IT'S WINDOW SHADE TIME



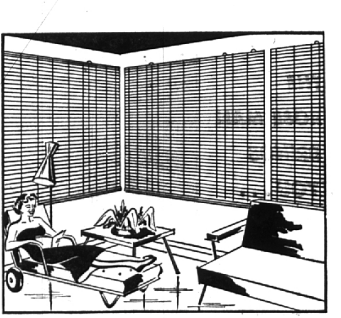
And For The Sun Room
Bamboo drapes or shades . . . custom made . . . or decor roll shades. Woven wood shades and drapes.

Now In Stock 2'6" x 6' to 12' x 7'

FROM \$5.95

BESSENGER'S

"Since 1927"



Like Adding Another Room

Your porch, like a new extra room for living, dining, entertaining, family parties become a new thrilling experience on a Warren Weather-Controlled Porch.

NEATLY TAILORED

For that Custom Look. Beautiful . . . Economical . . . Practical. Some Patterns with Cocoon Backing for Complete Privacy.

NORTHLAND CENTER
Facing Stouffer's
Enter Lot H. — EL 6-0331

FERNDAL STORE
23335 Woodward at Oakridge
LI 1-4936

Securely Charge Account Service

PUBLIC NOTICE

BECAUSE OF OUR CONSTANTLY INCREASING BUSINESS, WE HAVE BEEN FORCED TO EXPAND OUR SALES AREA. IN ORDER TO MAKE MORE ROOM, WE MUST CLEAR OUT MANY ITEMS AT GREAT SACRIFICE. BARGAINS GALORE DURING OUR—

STORE EXPANSION SALE

COUPON

50¢ OFF

Reg. \$3.49 — with coupon \$2.99

EACH GALLON OF BUCKINGHAM PAINTS

All Finishes
(good thru May 9, 1962)

COUPON

VINYL - SANDRAN FLOORING

Also Bird Vinyl, Forest, Manning, etc. From 6"-9"-12" Wide

79¢ Sq. Yd.

Protect Your Floors
With Proper Furniture Rests

Huge Selection from Set of four

19¢

EXTRA SPECIAL—
VINYL FABRIC REMNANTS
For Upholstering and Walls

VALUES TO \$8.95 NOW

\$1.29 Sq. Yd.

Open Mon., Tues., Wed. 9-6 — Thurs., Fri., Sat. 9-9

FAIR-WAY TILE MART

21 E. 14 MILE ROAD, CLAWSON JU. 8-4429

POOL APPEAL starts with RAMUC ENAMEL

Colorful Ramuc beauty lasts for seasons. Natural rubber-base paint. Handsome tile-like finish. Easy to apply. Comes in many lovely pastel shades. Remember, Ramuc is used on more pools than any other paint. Get free 32-page "Handbook on Painting Swimming Pools." If you write in, include pool dimensions, whether built of concrete or steel, type of paint now used.

A Product of
INERTOL CO., INC.
Paint specialists for over half a century



STEELCRETE
36663, 12 Mile Road
Farmington, Michigan

GR 4-3601