

Divider Gives New Look

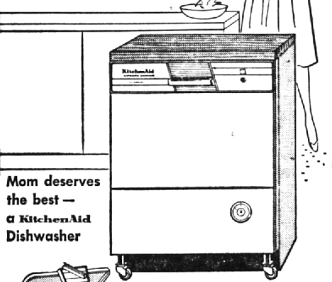
For the home handyman who is looking for new ideas, patterned glass is a material which is both easy to work with and offers a wide range of applications. This simple room divider effectively screens the dining area from the hall without shutting out light from either room. It solves decorator problems, too.

NEW IDEA FOR

Mother's Day KitchenAid convertible portable DISHWASHER

PORTABLE TODAY BUILT-IN TOMORROW

The KitchenAid convertible-portable is a front-loading portable that can be installed as a built-in later simply and conveniently. Maple cutting top, 4 square feet and 1 1/2 inches thick, adds a luxury touch. Available in the new Imperial series, it has king-size capacity, multiple washes and rinses, and Flo-Thru hot-air drying; adjustable dividers in the 2-position upper rack push button control panel; self-storing fill; Drain hose and power cord.



Mom deserves the best — a KitchenAid Dishwasher

IMPERIAL Convertible—Portable

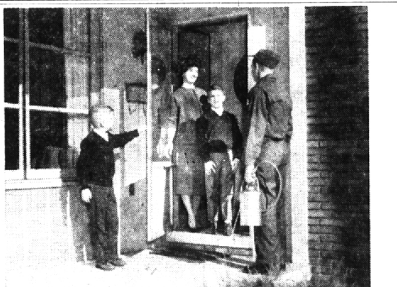
KitchenAid. Portable dishwasher

Wide, easy-to-grip Guide Bar • Dual fill-draw hose and power cord • Easy-to-use, versatile sink connector • Center built-in • Dish indicates dishwasher action • Glass-enclosed, corrosion-resistant interior and lid • Three-section, large-capacity upper rack • Service for 12" • Self-cleaning dual strainers • Sanitized hot-air drying

MILKS APPLIANCE

1493 S. Woodward • MI 6-1300
Birmingham

THE ROSE MAN BRINGS YOU...



YEAR 'ROUND FREEDOM from bothersome ants—and other pests

ROSE HOME SERVICE OFFERS YOU Guaranteed, professional protection against moths, ants, carpet beetles, spiders and other insect pests... 365 days a year!

FREEDOM FROM Moths • Ants • Spiders • Carpet Beetles • Mice • Crickets • Roaches • and other pests
CHECK THESE FEATURES Scheduled scientific applications • Modern equipment and materials • Convenient—Safe—Economic • Prompt, courteous service

ROSE—Since 1860
8401 W. Chicago
Detroit 4, Mich.

ROSE HOME SERVICE
A DIVISION OF ROSE EXTERMINATOR CO.

Call the Rose Man—
LI 5-2222

Under-Window Cabinets Provide Needed Storage In Compact Living Areas

Under-window cabinets, a revival of the "window seat" of grandmother's day, are helping provide much-needed storage space in open plan homes.

According to Ralph Sherwin, chief designer of Libbey-Owens-Ford Glass Company, under-window cabinets can greatly increase storage without detracting from a room's appearance or making furniture arrangement difficult.

"LOOKING BACK to the average home of a few years ago when the outside wall had only an occasional small window, there was plenty of space for shelves and cupboards," Mr. Sherwin commented. "But now that much of this area is being made into a light-giving glass wall, often completely enclosed with Thermopane insulating glass, storage is being conveniently relocated in knee-high cabinets below the windows where they do not obscure the view."

In a room open to the outdoors on one or more sides with glass walls, the storage cabinet can actually add to the convenience

and function of a specific interior area, points out Mr. Sherwin.

HE CITED as an example the use of a series of under-window cabinets in an informal dining room where they serve as handy storage for extra serving pieces, dishes and little-used linen which otherwise might overcrowd the buffet. In homes where the living and dining rooms have been combined into a single undivided area, this idea helps each section gain a sense of identity, setting them apart as areas of separate functions.

The cabinets can help make a den or small library when the shelves are left open to act as book storage. In a recreation or children's room, they are often enclosed in front and the top made into a hinged lid. The space provided is an excellent out-of-the-way place for storing toys and games. Upholstering the lid in colorful fabric helps it double as extra seating.

For the kid fan, especially one who is cramped for suitable space

in which to set up his equipment, under-window cabinets make a fashionable built-in unit. By including space for the television set and racks for record storage, the cabinets can become a self-contained entertainment unit.

THE FRONT of the shelves can be enclosed with either hinged or sliding doors. The latter type is preferable as they operate within the unit rather than opening into the room, cutting down on usable floor space. Because it requires no refinishing and can be cleaned with a damp cloth, glass is popular. The glass panels are mounted in grooves or on inexpensive metal tracks in the top and bottom shelves. When the cupboard is used for storage of articles which have display value such as silverware or prized china, clear plate glass can be used to protect the articles from dust and permit a clear view of the interior. When obscurity is desired pattern glass may be used. The many designs blend well with any room setting while adding a decorative touch all their own.

Outdoor Lighting Adds To Entertainment Areas

Keeping pace with the contemporary mode of open living, functional and decorative outdoor lighting is proving a year-round performer.

Initiated in California and Florida, where homeowners increased floor space by converting patios, terraces and gardens into living and entertaining areas far from sunset, outdoor lighting has become an important part of the decorative scheme of the home.

IT STARTED when people discovered that the large picture windows and glass walls so popular today were turning into distracting black mirrors at night.

By lighting patios, trees, lawns and gardens, it created the effect of expanding the room outdoors, winter or summer.

Some lighting should be provided no matter how modest the area. It beautifies, multiplies space for recreation, entertaining or just plain relaxing and is an essential safety measure.

Though there is a wide range of ways and devices for lighting living, flower beds, statuary and the home exterior, two cardinal rules should be observed:

1) LOCATE YOUR light source in such a manner that you see the object being lighted, not the light source. Glare can be distracting and annoying to you and your neighbors.

2) Don't try to imitate daylight by flooding your grounds with light. This results in a "white-wash" effect. Beauty and drama are best obtained by a skillfully designed pattern of light and shadow.

Starting with safety lighting of paths, walks, driveway and steps, spotlights, floodlights and post lights can be used for many purposes.

THEY CAN BE mounted on

posts, trees, the ground or the home itself to transform lawns, trees and gardens into a night-time showplace.

For detailed information on outdoor lighting fixtures, wiring and wiring requirements, consult your local electrical distributor, contractor or electric service company.

Sun Bathers Note: Deck That Tree

An ideal sun bathing spot can be made by building a small wood deck around a shade tree, extending it so that one end is always in the sun.

You can use 2x4 Douglas fir for the deck boards, and simple 2x4 framing members set on small concrete blocks.

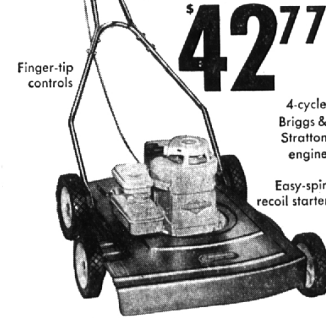
Engineering data which shows that use of good insulation in the correct thickness permits a decrease in the size of the unit needed to provide cooling and heating to meet human comfort requirements.

Kresge's the family choice

LAYAWAY NOW!

A Small Deposit Holds. Pay Balance as Convenient.

New! Extra Value! 22" 2 1/2 H.P. ROTARY POWER MOWER with Easy Spin Recoil Starter \$42.77



- Powerful, dependable, easy-to-start engine.
- Rugged, heavy-duty steel construction.
- 1 year warranty on engine and mower.

2 1/2 H.P. Mower with IMPULSE STARTER \$45.97

West Maple at Henrietta, Birmingham

"CHARGE IT at KRESGE'S"



'Supermarket' at Home

Fresh foods, frozen foods—they're all at hand in the kitchen in quantity for the homemaker's convenience when she has a new electric refrigerator and freezer side by side. Food is easier to store, easier to get at, and more carefully cared for in today's electric refrigerators and freezers which serve as a housewife's private supermarket in her kitchen.

Careful Integration Important Item In Patio Building

A new patio is one of the most popular projects for home owners with the remodeling bug. To make a patio as attractive as possible, it should be carefully integrated with the house, with a feeling of continuity between adjoining indoor and outdoor living areas.

A Dutch door accomplishes this beautifully. Dutch doors in a variety of designs can be purchased from local building supply centers. Made of ponderosa pine, they are chemically treated to withstand weather and equipped with sturdy hardware.

SPRAYING! Shade Trees, Shrubs, Evergreens, Fruit Trees & Ornamentals. Also mosquito control & Lawns for weed and feed.

JASSO TREE SERVICE
40 Baltimore, Troy 1928 MU 9-2700

IMPROVE YOUR HOME

BUY NATIONALLY KNOWN BRANDS at BIG DISCOUNTS

for NEW HOME Beauty LIGHTING FIXTURES

BEDROOM
Beautiful design with choice of colors in glassware, complete, ready to hang, only **1.39**

RECESSED
Flat glass, chrome frame, complete, ready to hang. **3.88**

KITCHEN
Gleaming chrome trimmed, circular fixture, several designs only **2.88**

BATH ROOM
Chrome trimmed with attractive glassware, ready to hang **1.88**

Circle Line FIXTURE
Efficient overall light, chrome trimmed, can be used in many rooms... easy to clean, simple ring. **5.55**
Double Ring **6.66**
Price does not include fluorescent tubes



1' WINDOW SHADE SALE

buy one of our regular LOW price, get the second one for just one penny.

LITE PROOF reg. 3.98 **2 FOR 3.99**
MACHINE OILED reg. 3.19 **2 FOR 3.20**
PLASTIC COATED reg. 3.39 **2 FOR 3.40**

Custom cut up to 36" . . . all sizes available . . . these are irregular . . .



SALE PRICE 4.99

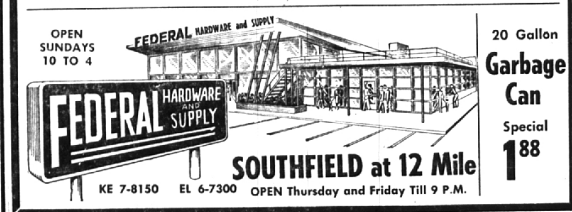
white and colors . . . Reg. 6.59 gal.

Easy to use . . . no prime needed . . . one coat covers most surfaces . . . dries in 30 minutes . . . washable.

ROMEX WIRE 14-2 2 1/2' ft. In Full Rolls 3c By the Ft.

GUTTER 77¢ 1/2 lb. Complete line of solderless fittings

SCOTT'S Lawn & Garden Products "group" buy with your neighbor . . . get 20% DISCOUNT in quantity lots



OPEN SUNDAYS 10 TO 4
KE 7-8150 EL 6-7300 OPEN Thursday and Friday Till 9 P.M.

20 Gallon Garbage Can Special 1.88