

### Secretaries Plan Spring Meeting

March 27 is a red letter day for the Oakland Association of Educational Secretaries. President Myrtle Bungart announces that the Association's spring dinner meeting will be held on this date, at the North Farmington High School, 32900 Thirteenth Mile Road. Dinner will be served at 7 p.m.

Marinus VanAnoyde, Assistant Superintendent of Farmington Schools, will assist as master of ceremonies. The Melody Misses of O. E. Dunckel Junior High will present vocal selections. Lenore Fort, president of the Michigan Division of the National Secretaries Association, will be the speaker. No dinner reservations will be accepted the day or evening of the dinner.

Looking for a job... a home... a special service? See the Want Ads.

## Easter

is right around the corner... Spring is in the air...

... and we are now showing a most complete line of extraordinarily beautiful Easter Cards.



## La Belles

Books - Stationery - Gifts

137 West Maple, Birmingham



How can we say it so you will know that it's true?

You've been badgered and bombarded... cajoled and clobbered with 501, 601, 701 and 1001 kinds of continuous filament nylon carpet...

## We've bought...

a GOOD nylon made by a GOOD company with a GOOD back, finest dyes—quality clear through.

## It sells for 7.95

and it's worth every penny to get THEIR good name and OUR good name behind the carpet you buy! Come in to...

# Best

Woodward at 11 1/2 Mile Rd.

GOOD nylon carpet ..... 7.95

## COMING EVENTS

**Thursday, March 28**  
**AMERICAN ASSOCIATION for United Nations, Oakland County Chapter**—Meeting at Birmingham Community House at 8 p.m. Speakers to be Prof. Walter Malmann, MSUO, and Prof. Lawrence Whit, MSU.

**Friday, March 30**  
**PINE LAKE COUNTRY CLUB**, annual spring luncheon and fashion show.

**Saturday, March 31**  
**BIRMINGHAM NO. 220 EASTERN STAR** — Dinner sponsored by Building Fund Committee, Masonic Temple, 6:30 p.m.

**Monday, April 2**  
**CRANBROOK BRANCH, WNFPA**—Meeting and dessert tea in home of Mrs. James Little, 3637 Franklin, Bloomfield Hills.

**Tuesday, April 3**  
**KAPPA DELTA ALUMNAE**, South Oakland County—Dinner meeting at the Oakland County School for Crippled Children.

**BIRMINGHAM WOMAN'S CLUB**—Regular monthly meeting, YMCA on Lincoln Avenue, 1 p.m.

**CRANBROOK MUSIC GUILD**—Final concert of season, Cranbrook gymnasium. Guest artists duo pianists Vronsky and Babbin.

**Wednesday, April 4**  
**RIVERWOODS BRANCH WNFPA**—Benefit luncheon and card party in North Congregational Church, 12:30 p.m.

**VILLAGE WOMAN'S CLUB**—Men's Night dinner at Oakland Hills Country Club.

**FOREST LAKE COUNTRY CLUB**—Spring fashion show and luncheon, 12 p.m.

**Thursday, April 5**  
**BIRMINGHAM BUSINESS WOMEN'S CLUB**—Business meeting, dinner and Easter party, Community House, 6:30 p.m.

**Friday, April 6**  
**UNIVERSITY OF MINNESOTA WOMEN'S CLUB**—Meeting and election of officers in home of Mrs. Raymond Boake, 16000 Harrison, Livonia.

**ST. DUNSTAN'S GUILD**—Opening performance of "The Constant Wife", St. Dunstan's Playhouse, 9 p.m.

**Saturday, April 7**  
**OAKLAND HILLS COUNTRY CLUB**—Informal dinner dance.

**Thursday, April 12**  
**FRIENDS OF THE LIBRARY**—Benefit performance of "The Constant Wife", 9 p.m. in St. Dunstan's Pavilion on Lone Pine Road. Proceeds to go to "Extra Copies Fund".

**"OVERTURE TO OPERA"**—Public education program in interest of grand opera, Hackham Memorial Auditorium, 8:15 p.m. Mrs. George Romney among panelists.

**Saturday, April 14**  
**FOREST LAKE COUNTRY CLUB**—"Twist" dinner dance, 6:30 p.m.

**BIRMINGHAM NO. 220 EASTERN STAR**—Runnagale Sale at Masonic Temple, 9 a.m. to 3 p.m.

### Michigan Engineers Meet at Cranbrook

The Evergreen and Farmington Interceptor systems and the new closed circuit television sewer maintenance program were prominent in the program for state engineers meeting last week at Cranbrook School.

R.J. Alexander, DPW head, made the opening address to members of the Michigan Engineering Society, holding their 82nd annual convention at the school.

Cranbrook's football field, under which lies a 162 foot sewer, a part of the Evergreen Interceptor system, was used as a live demonstration of the use of TV for sewer inspection.

The TV camera allows workmen an "inside" look at sewers, allowing probable trouble to be intercepted before it begins, Alexander explained to the group.

He added that the present interceptors represented an investment of \$16 million, with additional systems for Clinton River Valley, Huron Valley and a small section of the Rouge to be developed in the future.

Other future DPW projects outlined were water mains costing \$18 million for Waterford, Farmington and Novi townships.

### Choose Russell Stover Candies for Easter

finest, freshest candies you can give!

**1.25**

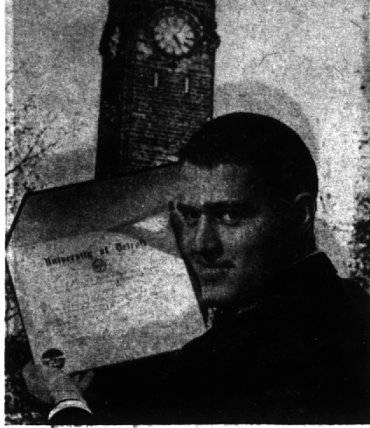
**1.25**

**1.00**

**1.00**

**55c**

The most welcome Easter bunnies bring Russell Stover Candies—any of the above...also the famous Assorted Chocolates. 1.50 the 1-pound box, gaily decorated for Easter.



### 'Engineer of the Year'

Hugh J. Scullen, 6765 Orinoco Circle, Bloomfield Township, displays the University of Detroit's "Engineer of the Year" award. Scullen received the award at the university's annual Slide Rule Dinner Saturday. His scholastic average of 3.74 out of a possible 4.00 also earned him the Chi Sigma Phi award for the highest five-year total average. Scullen is president of the Honors Organization Council and Pi Tau Sigma Fraternity. He also serves as secretary for Alpha Sigma Nu and is a member of Tau Beta Pi and Blue Key, national honors fraternity. A senior majoring in mechanical engineering, Scullen has received a National Science Foundation Fellowship for graduate study next year.

### 6 Oakland Residents Listed in 'Who's Who'

Six Oakland County residents have joined U. S. astronaut Allan B. Shepard Jr. and Virgil I. Grissom in the recent listing of 8,800 new names in "Who's Who in America."

Included in the new biographical edition are James M. Robbins and Edward W. Pratt of Royal Oak, Mrs. Irene E. Murphy of Birmingham, and Walker A. Williams, Merritt D. Hill and the Rev. Reuel L. Howe of Bloomfield Township.

Robbins, who recently headed a special committee of Oakland industrialists which assisted in acquiring a 445-acre parcel in Orion Township for a proposed county jet airport, is a well-known businessman and manufacturer.

HE OWNS 15 business enterprises, dealing mainly in plastics, electronics and precision tools, throughout Michigan and other states. One of his nine plants is located in Royal Oak with another in Troy. Other businesses include sporting goods store, airplane rental agency, Sylvan Glen Golf Course, and considerable real estate and office plantations in Central America.

In addition, Robbins is a flying and auto racing enthusiast, having entered several cars in the Indianapolis 500 mile race.

Pratt, president of the Wake Pratt Construction Co. of Royal Oak, is chairman of the National Housing Center in Washington, D. C.

HILL, 965 East Glenarry Circle, former vice president of Ford Motor Co., served on Robbins industrial committee which raised funds to acquire options for 445 acres of the proposed 3,000 acre airport site in Oakland County.

Other Birmingham area "Who's Who" persons reside at the following addresses: Mrs. Murray 444 Bonnie Briar; Walker A. Williams, 1664 North Glenarry; and Rev. Howe, 1290 North Cranbrook.

Although Shepard and Grissom made the publication, John H. Glenn Jr., the most famous astronaut and first American to orbit the earth, didn't make his historical flight before the biennial roster went to press.

THE 8,800 new names and 56,000 total biographies in the 32nd edition stand as new records for the publication which began in 1899. "Who's Who" contains the names of about three out of every 10,000 persons in the U. S.

### Ruth Shain Class

The Ruth Shain Class in International Affairs will hold its regular meeting Tuesday morning at 10 a.m. at the Birmingham Community House.

The topic will be "International Trade," an examination and discussion of the President's bill in reference to Europe's Common Market.

Mrs. Leon Spanier, international relations chairman for the Birmingham League of Women Voters, will be in charge of the meeting.

The topic will be a three-covered discussion with Mrs. Donald Kinney of Clawson, Mrs. James Dunne of Birmingham and Mrs. Spanier.

According to the script, they are composing a broadcast for WJR on the "showcase" program. The meeting is open to the public.

### Promoted to Colonel

Edward M. Rex, son of Mr. and Mrs. John J. Rex of 144 S. Williamsbury Road, Birmingham, has been promoted to Colonel at the Air Force Flight Test Center, Edwards AFB, California.

Colonel Rex is Chief of Liquid Systems Branch of the 6503rd Test Group at the Center. This Air Force Systems Command Center has tested almost all aircraft in the Air Force inventory.

He was Deputy Department Head, Department of Aeronautics at the Air Force Academy prior to being assigned to Edwards.

### Cinema Guild of Birmingham

CORDIALLY INVITES YOU TO ENJOY WITH US

THE 1962-63 SEASON OF MOVIE MATINEES

"PARENT TRAP"  
 "THE KING AND I"  
 "MIDNIGHT LACE"  
 "MY UNCLE"  
 "THE TRAPP FAMILY"

TWO DAYTIME SHOWINGS  
 10:00 A.M. and 1:00 P.M.  
 AT THE BLOOMFIELD THEATER  
 BIRMINGHAM, MICHIGAN

DONATION—\$5.00 PER SEASON  
 TELEPHONE: MI 7-2642  
 OFFICE HOURS—10 A.M.-2 P.M.

Open Thursday and Friday 'til 9 p.m.

# ROBBINS

Fashion leaders for over 30 years

## archer STOCKINGS

# ANNUAL SALE

### 'Engineer of the Year'

ONCE-A-YEAR SAVINGS ON FINE ARCHER NYLONS: SEAMLESS AND FULL-FASHIONED SHEERS IN ALL FAVORED COLORS, PROPORTIONED SIZES 8 TO 11 1/2. BUY THEM BY THE BOXFULS, SAVE EVEN MORE!

Regular \$1.39	Regular \$1.50
<b>\$1.20</b> pr.	<b>\$1.25</b> pr.
3 pairs 3.45	3 pairs 3.60
6 pairs 6.60	6 pairs 7.00
12 pairs 12.80	12 pairs 13.80
<b>YOU SAVE \$3.88</b>	<b>YOU SAVE \$4.20</b>

Open Thursday & Friday 'Til 9 P.M.

## Jerry Gilden

### SPRING-BLOOMING SHIRTWAIST \$17.98

Full-blown Schiffler embroidered flowers, strewn on cotton batiste... young and beguiling version of the shirtwaist classic. 8-18.

• Black  
 • White  
 • Beige  
 • Blue

142 W. Maple... Branches in Royal Oak, Mt. Clemens, Ferndale