

Lalla Trains In Hawaii

Army Pvt. Thomas A. Lalla, son of Mr. and Mrs. A. Lalla, 1968 35th Infantry, in three weeks of Humphrey, Birmingham, is participating in annual army training tests at the Pohukukua Training Area on the island of Hawaii. The training is scheduled to end March 25.

Lalla and other 35th Infantry personnel are maneuvering over the rugged lava-covered terrain between the famous mountains Mauna Loa and Mauna Kea. Combined arms exercises utilizing live ammunition are being conducted along with the standard company-size training tests.

The Pohukukua training is an extension of the mountain and jungle warfare and anti-guerrilla operations conducted near the 25th Division's home station of Schofield Barracks on Oahu.

The 18-year-old soldier, a member of the infantry's Company B, entered the Army in September 1961 and was last stationed at Fort Chaffee, Ark.

A subscription to The Eccentric brings you the community's top news events 52 times a year.

PICTURE FRAMING

OUR SHOP IS ON THE PREMISES

ARTISTS' SUPPLY CENTER

1220 N. WOODWARD—2 Blocks South of 12-Mile Road
LI 8-7680—OPEN 9-6—THURS. & FRI. TILL 9 P.M.

We have a Good Stock of **ART SUPPLIES**



Your good taste deserves the finest . . . **CUSTOM FURNITURE**

We create our custom pieces to subtly blend with your home and preferences . . . for comfortable, smart living.

"Representatives will bring samples and frame catalog"

Open Monday & Fridays 'Til 9 P.M.

ELLIOTT'S of Waterford

"fine furniture and quality carpeting since 1924"
5400 Dixie Highway OR 3-1225

PENNEY'S 60th ANNIVERSARY

NORTHWOOD STORE ONLY . . . 13 MILE & WOODWARD

All-weather Balmacaans in fine cotton poplin



Rain or Shine . . . always in style

10⁹⁵
Misses Sizes 8 to 18

12⁹⁵
Men's Sizes 38 to 44

COUNT ON PENNEY'S . . . 60 YEARS OF EXPERIENCE

to pick a quality cotton poplin that keeps out just as much rain, if not more, than everyday poplin . . . but keeps silkier, longer! Penney's knows that a balmacaan is a classic that stays fashion-right 'til you've worn it to a frazzle! So, Penney's uses its 6 decades of buying experience to give it to you with the kind of tailoring and detailing you'll see at higher price. For women—with Scotchgard® water and stain repellent finish, a sun-bright plaid lining, beige, willow green, black. For men—with a bold patterned lining . . . the whole machine washable at medium set. Oyster, black, willow green.

Remember, You Can Charge It at Penny's!

Firm Names Gregory Head of NY Branch

John F. Gregory, 7230 Cedarcroft, Birmingham, a member of the B. C. Morton Organization's Detroit sales force since 1957, has been named to head the firm's Manhattan office in a move designed to expand its New York City operations.

Bernard Carver, company president, also announced Gregory's promotion to a resident vice president of the nationally-represented investment group in recognition of his outstanding sales record over the past five years and of his new role in the Morton Organization.

One of the newly appointed vice president's principal responsibilities, president Carver said, will be to supervise the recruiting and training of qualified investment sales personnel to augment the Manhattan office's present staff.

THE FIRM'S Manhattan office is one of fourteen offices and financial planning centers operated in the Empire State by the Boston-headquartered organization specializing in mutual funds, savings and loan placements, certificates of bank time deposit, insurance, realty syndication and other financial services.

Currently, the firm maintains 92 locations in 42 states and in several foreign countries.

Since joining B. C. Morton's Detroit sales force, Gregory has consistently ranked among the firm's top five sales producers every year in all investment categories. His outstanding sales record was achieved in competition with more than 850 Morton Organization salesmen and, according to President Carver, was maintained even during the past year while he was assigned major recruiting and training tasks in the Detroit office.

Prior to his association with B. C. Morton and during the period after World War II, Gregory was a manufacturer's representative in his native Michigan.

A graduate of the United States Merchant Marine Academy at Annapolis Island (Mass.), he was on active sea duty from 1942 until 1946 as a Chief Boatswain's Mate and was awarded the Combat Medal for his part in wartime operations in the Atlantic, Pacific, and Mediterranean theaters.

C'brook Galleries Plan Exhibition Of Japanese Art

"Japan: Design Today," an exhibition of 400 objects for personal, industrial and household use, will be shown at Cranbrook Academy of Art Galleries from March 31 through April 29.

With the opening of this show an admission of 50¢ for adults and 25¢ for children will be inaugurated. Thereafter, admissions will be charged for special exhibitions.

The summer hours of 2 to 5 p.m. daily except Mondays and major holidays will also go into effect.

FEATURING THE best of contemporary Japanese design in the fields of textiles, ceramics, lacquer and wooden ware, metalwork, china and glassware, as well as ceremonial objects and toys, the exhibition was organized by Mez Torbert, curator of design, Walker Art Center, Minneapolis, and Japan Design House. It is being circulated nationally by the Smithsonian Institution Traveling Exhibition Service.

Included in the exhibition are bamboo tea ceremony utensils, iron kettles, glazed vases and tea sets, ceramic bowls, China sake sets, glass tumblers, crystal tableware, lacquered bowls and plates, hand-carved wooden combs, "kokeshi" dolls and other folk toys.

Articles were chosen from retailers, wholesalers, manufacturers and artisans and reflect the highest standards of taste and craftsmanship existing in Japan today. Some objects are equally useful for Occidental and Oriental use—others are meant for use in Japanese households but may be adapted to Western settings.

THIS THE EXHIBITION is an interesting and idea-filled for designers and manufacturers as for the general public.

Japanese students attending Cranbrook Academy of Art participated in the installation of the exhibition. They are: Francis Fujio, of Iwate-Ken; Mari Kawasaki, of Natsunaki; Kiyohiko Naka, of Kureme, and Masako Sone and Tacko Nakagome, of Tokyo.

BIRMINGHAM ECCENTRIC WANT ADS GET RESULTS MI-4100

2 Michigan Week Chairmen Named

Chairman for two county-wide phases of Michigan Week have been named by Oakland County chairman Florence H. Willett.

Mrs. Willett, mayor of Birmingham, appointed Troy Mayor Robert Huber as the county's Business and Product Promotion and Achievement Award chairman for Michigan Week.

She named H. L. Kohlmeier, Birmingham, as county chairman for a Michigan Week Speakers Bureau group—such as a unit of government, a service club or a women's organization—that has accomplished a major achievement for its community.

Kohlmeier's responsibility will be to arrange and schedule speakers on Michigan Week topics for local appearances. This activity was suggested at a kick-off luncheon.

The annual drawing for the exchange of mayors will take place Thursday morning, March 22, at the Lansing City Hall. Mayors exchange will be on Government Day, Monday, May 21.

Area officials serving on the exchange of mayors committee of the Michigan Week program board are: R. J. Alexander, mayor of Oak Park; David R. Calhoun, mayor, Huntington Woods; Bruce Garbutt, mayor, Ferndale; and George W. Kuhn, mayor, Berkley.

SIXTEEN OAKLAND County communities are participating in Michigan Week this year. They are Birmingham, Pontiac, Royal Oak, Southfield, Clawson, Ferndale, Walled Lake, Farmington, Oxford, Holly, Lake Orion, Rochester, Oak Park, Milford, Hazel Park and South Lyon.

Wood framed homes are ideal for desert country because wood has high insulating properties. Wood homes, when properly designed, provide natural insulation against heat.

Household Help Requires SS Tax From Employers

R. I. Nixon, director of Internal Revenue for Detroit, offers a word of tax advice for housewives and other employers of domestic workers—don't overlook possible liability for Social Security taxes.

If a household worker is paid \$50 or more in any calendar quarter, the employers must report the wages and pay both the employer and employee portion of the social security tax to the Internal Revenue Service.

Nixon reminded household em-

ployers that these taxes must be reported on Form 942 which is required to be filed by the end of the month following the calendar quarter. That is, by April 30, July 31, October 31, and January 31, as required.

COVERED ARE persons working as maids, laundresses, cooks, housekeepers, gardeners, janitors, furnacemen, governesses, valets, chauffeurs, etc.

Information covering the requirements for filing an income tax return for these domestic workers will be included with the Form 942 when mailed to the housewife for the first quarter of 1962.

Nixon added that Forms 942 can be obtained from any Internal Revenue office and that his staff would be happy to answer any questions with respect to the application of this tax.



*Re-modeling CLEAR ANCE

Expert Watch Repairing

Let Us Use Our Experience To Serve You



- Specialists in Antique Clockwork • Atmos Clocks
- 24 Hour Watch Repair Service On Request
- Crystal, Crown, Main Springs Fitted While You Wait

The Time Shop

Sean (Pat) Monk
Certified Master Watchmaker H.I.A.
151 S. Bates MI 6-7377



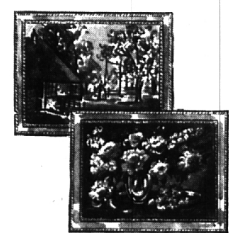
you are cordially invited to . . .



of original oils, fine prints, copies of famous masterpieces, and reproductions of paintings shown on the recent TV WHITE HOUSE TOUR

TODAY • FRIDAY • SATURDAY
Today and Saturday 9:30 a.m. to 5:30 p.m.
Friday evening 'til 9

Come to our gallery showing of fine originals and reproductions . . . chose from an unsurpassed selection of framed pictures . . . or take your pick from scores of unframed prints that can be custom-framed for you! Pictures of every size, shape, subject, and art period . . . from pastorals to portraits . . . old masters to moderns! Priced from \$1 to \$100!



Special Group of Large 22"x28" Pictures—beautiful reproductions in a wide selection of subjects—framed in choice of old pine or antique maple . . . \$11.95

Meet Mrs. Marguerite Terry, consultant from one of the leading picture manufacturers, who will be here on Saturday from 10 A.M. to 2 P.M. to advise on the selection and arrangement of pictures.

TRY ANY PICTURE IN YOUR HOME BEFORE YOU BUY!
Take home the picture, or grouping of wall decor, that you like and try it . . . no obligation!

24 WEST HURON STREET
In Downtown Pontiac
PARK FREE IN OUR OWN LOT BEHIND STORE

Sale

famous maker
match-irix
separates

\$7⁹⁹

Reg. to 15.98

Two-piece casuals in colorful spring prints. Easy-care cottons, blends. 8-16.

Birmingham

*PLEASE PARDON ANY TEMPORARY INCONVENIENCE WHILE OUR DECORATORS ARE AT WORK CREATING A DELIGHTFUL NEW SETTING FOR RB FASHIONS.

142 West Maple Road, Birmingham
Branches in Royal Oak, Ferndale, Mt. Clemens