

Time of Year to Heed Tornado Safety Rules

1. There is no universal protection against tornadoes except caves or underground excavations. When the permits, go to a tunnel, cellar, cave or underground excavation which should have air pressure. It should be kept fit for use, free from water, gas, debris; and preferably equipped with pick and shovel.
- II. If You are in open country:
 1. Move to right angles to the tornado's path. Tornadoes usually move ahead at about 25 to 40 miles per hour.
 2. If there is no time to escape, lie flat in the nearest depression such as a ditch or ravine.
- III. If in a city or town:
 1. Seek inside shelter, preferably in a strongly reinforced building. Stay away from windows!
 2. In homes: The southwest corner of the basement usually offers greatest safety, particularly in frame houses. People in houses without basements should go to other shelter, preferably in a storm cellar, although a depression, such as a ditch or ravine, can offer some protection. Doors and windows on the north and east sides of the house must be opened to help reduce damage to the building.
 3. Standing against the inside wall on a lower floor of an office building offers some protection.
- IV. If in schools:
 1. In city areas: If school building is of strongly reinforced construction, stay inside, away from windows, remain near an inside wall on the lower floors when possible. Avoid auditoriums and gymnasiums with large, poorly-supported roofs!
 2. In rural schools: do not have strongly reinforced construction, remove children and teachers to a ravine or ditch if storm shelter is not available.
- V. If in factories and industrial plants:
 1. On receiving a tornado warning, a lookout should be posted to keep

safety officials advised of the tornado's approach. A advance preparation should be made of shutting off electrical circuits and fuel lines if the tornado approach is imminent. Workers should be moved to sections of the plant offering the greatest protection.

VI.

Keep calm! It will not help to get excited. People have been killed by running out into streets and by turning back into the path of a tornado. Even though a warning is issued, tornadoes often strike one's home or location are very slight. Tornadoes cover such a small zone, as a rule, that relatively only a few places in a warned area are directly affected. You should know about tornadoes though "just in case".

VII.

Keep turned to your radio or television station for latest tornado advisory information. Do not call the Weather Bureau, except to report a tornado, as your director's request may tie up telephone lines urgently needed to receive reports or to relay advisories to radio and television stations or relay them to thousands in the critical area.

Where Tornadoes Can Occur: Any place in the United States at any time of the year. They happen most frequently in the midwestern, southern and central states from March through September.

How Often Do They Occur: The records show that the average number of days with tornadoes varies from about 12 per year in parts of the Mid-West to less than one per year in the Northeastern and far Western states.

How To Recognize A Tornado: Usually observed as a funnel-shaped cloud spinning rapidly and extending toward the earth from the base of a thundercloud. When close by, it sounds like the roar of hundreds of airplanes.

The Birmingham Eccentric Features

MARCH 22, 1962

PAGE 5

NATURE NOW

By Lydia King Frehee
Special Writer for The Birmingham Eccentric

Jean Henri Fabre, Pioneer Naturalist

One of the great naturalists of the 19th century was Jean Henri Fabre. His life (1823-1915) roughly coincided with the period of Darwin's work.

Son of a peasant, he lived his life in close intimacy with nature. The cold winds blew the family repaired to the barn, there to be warmed by the heat of the beasts. In the summer the child Henri spent every available moment collecting beetles, plants and the abundant fossils in the limestone of southern France.

always pursued by the debtor's shadow.

THE FRENCH placed the classics above all else and Fabre was teaching a mass of overgrown boys. About 1860 dollars per year was enough to keep him in cheap wine and chick peas. Since he lived within sight of the Alps he spent his free days at Mt. Ventoux, there to observe the life zones as he mounted the heights.

For he was interested in life in its every manifestation. He studied all growing things from the pomegranate of the plains to the forget-me-not of the Alpine summit. He discovered early that the nature is of a single piece and one must learn the whole to appreciate any part.

On Mt. Ventoux he did his first collecting beginning with the bee, commonest of insects. He never travelled far afield and in his later years he purchased an acre of this story and weedy mountain which was his laboratory.

HIS EDUCATION in the one room school was mostly a matter of learning to read. For six years was allowed for this. Later he studied Latin and in the nature of vent, he found a kindred spirit. Here were the honey bee, vine, fig, green, golden broom, turtle dove and cicada.

At the same time the poet and observer were aroused in him.

His family gave up farming and he went to roam the cities where they ran cheap cafes.

In HIS 20th year he married and in time found himself with seven mouths to feed. He was forced to supplement his teaching salary with any odd jobs he could find. In the meantime he tutored himself in physics, chemistry and mathematics in order to compete for higher degrees.

So the years went by and supporting his family depleted his time and his energy. His neighbors laughed at him; he received the cruelest treatment from those he trusted. He was derided by his contemporaries and on one occasion when he presented to his pupils the male and female components of flowers he was dismissed and barely escaped jail for corrupting the minds of youth.

Speed of Travel: 25 to 40 miles per hour average, but they have varied from 5 to 139 miles per hour.

Wind Speed: Estimated as high as 500 miles per hour within the tornado.

Causes of Destruction: 1. Violent winds which uproot trees, destroy buildings, and which create a serious hazard from objects blown through the air.

2. Differences in air pressure which can lift automobiles and can cause buildings to collapse.

Adopt Official Distress Sign For Motorists

A raised hood and white cloth tied to a car door handle has been adopted as the official distress signal for motorists who get stranded on a freeway.

State Highway Commissioner John C. Mackie said Michigan and 46 other states have voted to adopt the hood and handkerchief signal.

IF YOUR CAR breaks down on a freeway, you should tie a white cloth to the door handle on the driver's side, then get out on the opposite side and raise the car hood," Mackie said.

Under no circumstances should you ever walk on the freeway. After raising the hood and displaying a white cloth, you should wait in the car until help arrives."

MACKIE SAID stopping on a freeway is forbidden, except in emergencies.

"But if you must stop, you should make every effort to get the disabled vehicle off the roadway and onto the shoulder," Mackie said.

"If the disabled vehicle blocks all or part of a traffic lane, use flashing devices—such as flares, flashing lights, lanterns or reflectors—should be placed to warn oncoming traffic."

AT NIGHT, you should have your tail lights and interior lights on. A turn light should be left on so traffic won't mistake the vehicle's position as the through traffic lane.

"Finally—very important!—if you see a parked car displaying the distress signal, please notify a service station or police agency," Mackie said.

PEAT POTS: A few years ago we began to see the introduction of all sizes of peat made from peat moss and fertilizer which are invaluable because they are easy to use. Gabriel Meli, 2570 E. Big Beaver Road, has a mushroom business and it is an education to see the skill used to harvest these favorites of the cooks.

PEAT POTS: A few years ago we began to see the introduction of all sizes of peat made from peat moss and fertilizer which are invaluable because they are easy to use. Gabriel Meli, 2570 E. Big Beaver Road, has a mushroom business and it is an education to see the skill used to harvest these favorites of the cooks.

TORINO, ITALY: Last year a flower show was held for three months in this famous city in the Italian Alps. Mrs. John Dolz of Fenton has superb slides to record the event and has given them to the National Flower and Garden Association to be shared by the various branches in the state.

There is one slide which gives a lesson which we can use. This is the idea of a flower tree for your terrace. Take a branch from a dead tree which might have two

NOW AND THEN children need to face the reality of being denied something they want to do.

Under the protective wing of the family, love they often do not learn that their wishes, their behavior, to a large extent must be brought into line with the wants and wishes of others, that their world must be compatible with the society in which they live.

Miss Hartwig writes in "Children Are Human—Even at Camm," a new book she co-authored with Betty Myers.

CHILDREN NEED SET LIMITS, Authority Says

Much present-day juvenile delinquency stems from the fact that parents fail to set boundary limits for youngsters during their formative years, says Marie Hartwig, University of Michigan supervisor of physical education for women.

"Some children can fare quite well within the framework of broad limitations, whereas others must have very specific boundaries," says Miss Hartwig.

"Because of the nature of their personality, some children need very strong authoritarian leadership until such time as they are able to demonstrate their ability to operate within a democratic framework."

NEW YORK—Birmingham's annual baby crop stands up well in point of quantity and quality, with those in other sections of the country.

In relation to the local population, the new arrivals have been 1,000 residents, which compares favorably with the national birth rate in the United States as a whole, 23.7 per 1,000, and with those in the East North Central States, 24.3 per 1,000.

COMPARISON IS made on the basis of the latest nationwide compilation of birth figures, released recently by the U. S. Public Health Service.

They show that a total of 888 babies were born in Birmingham in the year ending Jan. 1, 1960, not counting the ones born locally to non-residents.

All of these newcomers arrived on the scene with clean slates. They had no commitments, no political ties, no convictions, no affiliations except family ones, and no debts.

ON THE PART of their parents, however, or in lieu of them, on the part of the public at large, there were certain obligations,

among them the duty to provide for the necessities of life and with an education during their formative years.

As to the cost of having a baby, those in the know say that the hospital costs and the obstetrician's bill are only the beginning.

A TRADE protection estimates that average parents, aided by their doting kinfolk, spend over \$1,000 on the furniture and other basics per baby.

It consists of a cradle, \$50; furniture, \$185; clothing, \$120; toys, \$40; diapers and pants, \$35;



POTTER Moving & Storage Co. No. 1 In Service No. 1 In Your Community



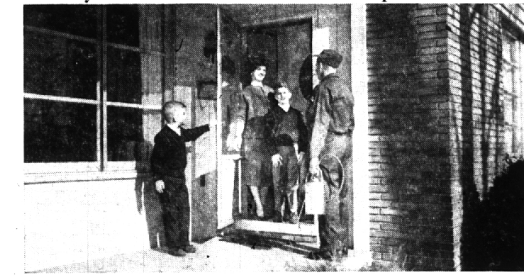
FOR FAST, CONVENIENT CARRY-OUT SERVICE... PHONE MI. 6-9544

THIS WEEK'S FEATURE: BLUEBERRY PIE

Greenfields RESTAURANT 725 South Hunter Blvd. Birmingham SELF-SERVICE • TABLE SERVICE • CARRY OUT

Birmingham Eccentric Want Ads Get Results—MI 4-1100

Give your valuable woolsens, carpets and furs



YEAR 'ROUND PROTECTION against moths... and other pests!

ROSE HOME SERVICE OFFERS YOU Guaranteed, professional protection against moths, ants, carpet beetles, spiders and other insect pests... 365 days a year!

Now! Enjoy freedom from costly, harmful home insect pests. Rose Home Service brings researched, scientific protection into your home... and keeps it there all year for only pennies a day!

FREEFOM FROM Moths • Ants • Spiders • Carpet Beetles • Mice • Crickets • Roaches • and other pests

CHECK THESE FEATURES Scheduled scientific applications • Modern equipment and materials • Convenient—Safe—Economic • Prompt, courteous service

ROSE—Since 1860 8401 W. Chicago Detroit 4, Mich. ROSE HOME SERVICE A DIVISION OF ROSE LATERMINATOR CO. Call the Rose Man—LI5-2222

Year's biggest power value! BUICK LESABRE



You get the extra performance of exclusive Advanced Thrust (engine moved forward for straight tracking, flat cornering, a flatter floor), automatic Turbine Drive, finned aluminum front brakes... all at no extra cost only in Buick! Clincher: Lesabre's priced lower than many "low-priced" car models! Drive a Lesabre. See your Buick Dealer today for the best trading terms in town!

BUICK LESABRE IS THE BUY

YOUR QUALITY BUICK DEALER IN BIRMINGHAM, MICHIGAN IS: FISCHER BUICK, INC., 808 S. Woodward Ave., Birmingham, Mich. Big selection! Big values! See your Buick Dealer for Double Check Used Car!

Economist Sees Marked Gain For Michigan

Oakland, Wayne and Macomb counties, comprising the Detroit Metropolitan area, will show the most advanced in the improved economic forecast for Michigan this year, according to Dr. Frank Herbert, chief of the research division of the Michigan Economic Development Department.

In predicting a marked gain in the state's economy for 1962, Dr. Herbert said the Detroit Metropolitan area will show the greatest increase relatively in comparison with other regions of the state.

AS ONLY ABOUT 16 per cent of industrial employment is in non-durable goods industry, most of the improvement that will occur will be due to the upsurge in the year in the fluctuating automotive industry, which has its greatest impact in the Detroit and Southeastern Michigan areas.

However, it will not be sufficient to eliminate the unemployment problem.

THE OVERALL improvement in the state should continue during the second half of the year, but with less acceleration. There is a slight possibility that the present national business cycle peak may be reached before the end of the year, and if so, it would also affect Michigan's recovery somewhat, Dr. Herbert said.

In any case, the state's economy will be at a higher level in 1962 than it was in either 1960 or 1961.

HOWEVER, EVEN an optimistic prediction for 1962 does not suggest that Michigan will have recaptured its earlier economic position among the several states.

Personal income as well as wage rates will be higher than they were in 1960 and 1961.

The total labor force probably will remain relatively stationary and total number employed rise considerably; so unemployment will be lower than in 1960 or 1961. Nevertheless, the unemployment rate will continue to be considerably higher than the national average.

STRICTLY FRESH

Cosmetics are a woman's means for keeping a man from reading between the lines.

Will power has been described as a heavy person's...



It's the politician who slings mud that always seems to lose ground.

DOWN TO EARTH Home-Grown Mushrooms Tops for Menu, Convenience

By ALICE WESSELS BURLINGAME
Special Writer for The Birmingham Eccentric

Fresh cut mushrooms on toast—good tasting and tops on your menu—especially when you step into your greenhouse to cut them after you have started to melt the butter to saute them. It is surely better to have your own mushrooms farm under a couple layers of dirt, peat moss and fertilizer than the mixture of manure, strong soil and spores.

"Mushroom Growing in The United States", Farmer's Bulletin, #1876, U. S. Department of Agriculture.

Children Need Set Limits, Authority Says

Much present-day juvenile delinquency stems from the fact that parents fail to set boundary limits for youngsters during their formative years, says Marie Hartwig, University of Michigan supervisor of physical education for women.

"Some children can fare quite well within the framework of broad limitations, whereas others must have very specific boundaries," says Miss Hartwig.

"Because of the nature of their personality, some children need very strong authoritarian leadership until such time as they are able to demonstrate their ability to operate within a democratic framework."

TORINO, ITALY: Last year a flower show was held for three months in this famous city in the Italian Alps. Mrs. John Dolz of Fenton has superb slides to record the event and has given them to the National Flower and Garden Association to be shared by the various branches in the state.

There is one slide which gives a lesson which we can use. This is the idea of a flower tree for your terrace. Take a branch from a dead tree which might have two

NEW YORK—Birmingham's annual baby crop stands up well in point of quantity and quality, with those in other sections of the country.

In relation to the local population, the new arrivals have been 1,000 residents, which compares favorably with the national birth rate in the United States as a whole, 23.7 per 1,000, and with those in the East North Central States, 24.3 per 1,000.

COMPARISON IS made on the basis of the latest nationwide compilation of birth figures, released recently by the U. S. Public Health Service.

They show that a total of 888 babies were born in Birmingham in the year ending Jan. 1, 1960, not counting the ones born locally to non-residents.

All of these newcomers arrived on the scene with clean slates. They had no commitments, no political ties, no convictions, no affiliations except family ones, and no debts.

ON THE PART of their parents, however, or in lieu of them, on the part of the public at large, there were certain obligations,

\$448,000 to Launch Local Babies

among them the duty to provide for the necessities of life and with an education during their formative years.

As to the cost of having a baby, those in the know say that the hospital costs and the obstetrician's bill are only the beginning.

A TRADE protection estimates that average parents, aided by their doting kinfolk, spend over \$1,000 on the furniture and other basics per baby.

It consists of a cradle, \$50; furniture, \$185; clothing, \$120; toys, \$40; diapers and pants, \$35;



"My wife says she enjoyed herself, too!"