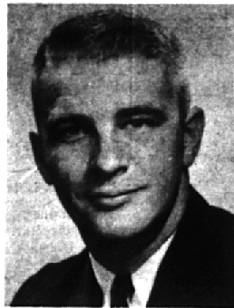


## Typical Thursday Sees Meetings Of Varied Groups

Take the first Thursday in February; add 60 Newcomers playing bridge; mix in 60 Oakland County Principals at luncheon; sprinkle lightly with a Musicales Chorus of 60; and spice with 15 Baldwin Intermediate Scouts. There you have a sample of a day at the Community House, where over

On the same Thursday in February, meetings also were held by: North Oakland Planning Division; Jr. League Puppet Group; Jr. League Chorus; Charm School; Pankotan Ballet; Birmingham Business Women; Beverly Hills Athletic Club; Recovery, inc.; Pounds A. Weigh; and the Christian Association.

Simultaneous with many of these goings-on, scholars were learning the fine points of: bridge, flower arrangement, painting, rapid reading and Spanish, to mention a few of 23 subjects taught in Adult and Youth Education Programs at the Community House. From 15 to 25 groups meet in a typical day at the Community House.



Juggling incoming telephone calls, between at least three meetings daily, while directing a staff of about 35, would be a sizable chore for any person. Additionally, however, Ward Ouradnik, executive director of the Community House, answers the questions and listens to complaints from some of the more than 160,000 persons who last year used the 10-room facility at 380 S. Bates. Difficult? Ouradnik who was appointed to the post last July, said no one person could do the job without the full cooperation he receives from his staff and from citizens who believe that the Community House is a tremendous asset to the area and will do anything possible to assure its continuance and growth as an activities center.

**Help Support Your  
Community House  
Fund Drive for 1962!**

**BOB BORST**  
**LINCOLN-MERCURY, Inc.**  
479 S. Woodward MI 6-2200  
Birmingham

**CARTIER'S**  
complete selection of  
wallpapers, scenics,  
hand prints.

311 E. MAPLE  
MI 6-6996

Give Generously  
To Your 1962  
Community House Fund Drive

**Kresge's**  
*for family savings*

West Maple at Henrietta, Birmingham

*why is the world's finest rangefinder camera  
also the most accurate reflex?*



LOOK  
AT THE  
LEICA M-3  
...YOU'LL SEE!

Come in! Your own eyes will tell you why so many pros who carried separate rangefinder and reflex cameras now use only one Leica M-3! You'll see why its rangefinder is accepted as the world's fastest and most precise... even at low light levels where others fail. Yet, in just 10 seconds (with Visoflex II) the same camera becomes the most accurate, compact, eye-level reflex. A "test-focus" in every lens range will show you why Leica M-3 is the world's most versatile 35mm camera for every kind of picture... from extreme close-up through telephoto! Let Us Demonstrate Today!

Serving Birmingham 24 Years

**BIRMINGHAM CAMERA SHOP**  
Everything Photographic  
168 South Woodward MI 4-0510

**Junior League**

The Junior League of Birmingham has more than 250 members who meet the second Wednesday of the month at the Community House.

Purpose of the organization is to foster interest among its members in the social, economic, educational, cultural and civic conditions of the community. Mrs. William B. Bachman of 715 Oakleigh, Bloomfield Hills, is president.



**PANCAKE HOUSE**  
WORLD FAMOUS PANCAKES

39 Varieties of  
World Famous  
Pancakes

Private Dining Room  
For:

- Meetings • Banquets
- Weddings
- Anniversaries
- Birthdays (all ages)

MI 4-2727  
1360 S. Woodward, Birmingham

**support  
the  
birmingham  
community  
house**

... WHERE  
GOOD  
NEIGHBORS  
MEET

Compliments of:  
**birmingham cleaners**  
woodward at adams  
w. maple at cranbrook

**CONN ORGANS**  
*"Discerning People Buy the Conn"*

•  
**SOHMER—JANSSEN  
PIANOS**  
•

Organ Instruction by  
Ole Foerch  
•

**LEW BETTERLY MUSIC CO.**  
*"30 years experience in Organ Sales"*  
**240 S. WOODWARD**  
Across from the Birmingham Theatre  
MI 6-8002

*Featuring*

Hart Schaffner & Marx  
• • •  
Varsity Town  
• • •  
Haspel Clothing  
• • •  
Stetson Hats  
• • •  
Manhattan and Enro Shirts  
Pajamas and Sportswear  
• • •  
Zero King Sportswear

**Dickinson's**

Wabeek Building      Saginaw at Lawrence  
Birmingham      Pontiac

**Machus** Presents  
*Gracious Dining Without Extravagance*

**WELCOME**



Recommended by  
Duncan Hines '62

for Luncheon  
after the Lecture

- Breakfast
- Luncheon
- Dinner

Birmingham's Finest Pastries — Confections  
Wedding Cakes — Special Party Cakes  
We Mail Birthday Cakes  
(anywhere in the U.S.A.)

**Restaurant MACHUS Pastry Shop**  
160 West Maple 8:30 a.m. to 8:00 p.m. MI 4-1016