



Activities for groups and individuals of all ages are available at the Community House. Some 500 children swarmed into the auditorium recently for the personal appearance of television personality If Wana Don, the star of WJBK's "Jungle Lot" show. From their expressions, it could be safely assumed that they enjoyed the show.

Senior Men's Club

All men 65 years or over or who have retired are eligible for membership in the Senior Men's Club

which meets every Tuesday and Friday at the Community House. The club, devoted to fellowship, service and recreation, has more than 125 members.

La Belles

*Gifts of Distinction
For All Occasions*

- Gifts of silver—antique, modern, and traditional
- Gifts of china and crystal
- Gifts of American Heritage
- Gifts of fine leather
- Gifts for entertaining
- Gifts for Her and gifts for Him
- Gifts for all — large and small

— Books, Books, Books —

"SO MUCH BEAUTY IN ONE PLACE"
BOOKS, STATIONERY AND GIFTS

137 W. Maple Road
Birmingham

Reliving the past

HOUSE 39 YEARS OLD

Next month, on Saturday, April 28, the Community House will mark its 39th year as the activities center for the Birmingham-Bloomfield area.

It was on that day in 1923—after numerous fairs, card parties, teas, rummage and bake sales—that civic, business and religious leaders of the area attended a ceremony in which a white frame building at the southwest corner of Bates and West Maple was turned over

to area residents for their use.

"THIS INSTITUTION is without endowment and must depend for its ordinary expenses on private gifts and upon rentals derived from the use of its premises . . ." stated one of the participating officials.

The Birmingham Eccentric said in an editorial: ". . . we should cherish this Community House. We ought to do everything in our power to make it a great success . . . Folks, use your Community House whenever you can. It belongs to you to make of it what you will . . ."

WITH A GROWING population and the resultant increase in the use of the Community House, residents began raising funds for a new and larger structure. A total of \$125,000 was raised and the present structure at the corner of Bates and Townsend was built and formally opened on St. Patrick's Day, 1930.

THOBURN H. Wiant, 1961-62 Community House president, said, "the value of such a facility to citizens in our area is reflected in the enthusiasm with which it has been supported over the years. We are confident that such inspiring support will continue."

We urge you to support the 1962 appeal of the Birmingham Community House

Higgins and Frank
of Birmingham
268 W. Maple

Deductible

The Bureau of Internal Revenue, in an official ruling in January, 1951, declared that all contributions to the Community House can be legally claimed as an income tax deduction.

A Worthy Cause

Support Your 1962
Community House Drive

Jacobson's

Birmingham



EXPERIENCE

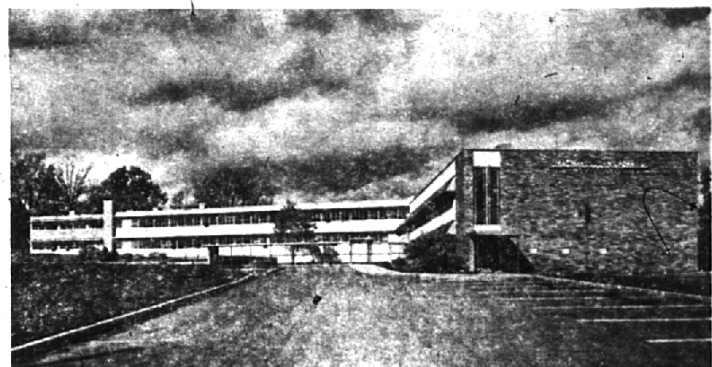
IS SOMETHING YOU CAN HANG YOUR HAT ON

Our experienced people are always ready to help you with all your banking and trust needs.

the Most Experienced Bank in town

DETROIT BANK & TRUST

MEMBER FDIC



*Business home of 350 supporters of Birmingham Community House
MacManus, John & Adams, Inc., Adv.*