

Now you can  
**RENT**  
**SOFT**  
**WATER**

the carefree way!

Now for the first time, you can RENT a famous multi-purpose REYNOLDS Fully-Automatic, Heavy-Duty Water Conditioner... the softener that removes iron the "Carafree" way. (Patented)  
Standard size only \$6.00 per mo. Large size only \$8.50 per mo. Rentals applied toward purchase, when desired.  
Investigate the very best in water conditioning—no obligation. Call...

**REYNOLDS**  
Water Conditioning Company  
Michigan's oldest and largest water conditioning company... since 1937  
12500 Choverdale, Detroit 4, Mich.  
WBester 3-3800

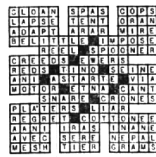


**Patio Painters**

Palette in hand, Mrs. Howard Hite of Birmingham works on a painting as fellow members of the Palette and Brush Club, Mrs. G. A. Carlson of Detroit (left), and hostess Mrs. Walter Taylor lend an approving

eye. Members of the Palette and Brush Club, the three women and a dozen other colleagues held a "patio-paint session" last week at Mrs. Taylor's home on Winding Wood Drive, Bloomfield Hills.

Answer To Puzzle No. 710



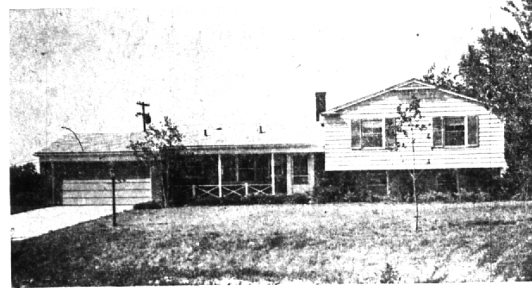
**Elected by WSU Alumni Group**

A Birmingham man will be inducted by the more than 1,800 Col-stalled as president of the Wayne State University College of Pharmacy Alumni. He will serve a one-year term. Four other officers and 10 lead annual student-alumni dinner at the members will also be installed at Statler Hilton Hotel, 7 p.m., Sat. dinner meeting.

It is Gordon Goette, class '43. By their expanding and amassing of 7000 Springridge Road, assistant research programs, our industries to the sales manager, chain store and universities together are fast making Michigan the leader in Goette was elected to the pres- sionce age advancement.

ELLIS INC. SINCE 1945  
**MODERNIZATION**  
Rooms & Porches a Specialty.  
MI 6-4188  
**KITCHENS - BATHROOMS**  
**ROOFING - SIDING**  
Most any alteration and repairs  
**FREE ESTIMATES TERMS**

**SMART STRATEGY FOR YOUNG HOMEMAKERS**



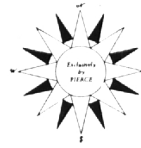
A Home That Looks  
Outward

Living Area flows from Family Room with fireplace to patio . . .

4 bedrooms, 2½ baths, library . . .

Front doors frame rolling vista across court . . .

A kitchen you hate to leave—fully equipped, speeds vacation chores.



**FRED PIERCE INC.**

460 NORTH WOODWARD, BIRMINGHAM, MICH.  
Midwest 7-1414

**5 BEDROOMS**



DESIRABLE CITY AREA. 2 Blocks from Holy Name. Convenient to town.

Family-sized Dining room. Living room with fireplace. 2½ Baths plus lav in full Basement.

Large Screened Porch. Kitchen, Breakfast room and Pantry.

MANY INCLUSIONS—Carpeting, Draperies, Refrigerator, Stove, Washer, Dryer, self-storing storms and screens.

Barbecue in Back Yard.

PRICED AT ONLY \$26,500. ADJACENT LOT FOR ONLY \$5,400.

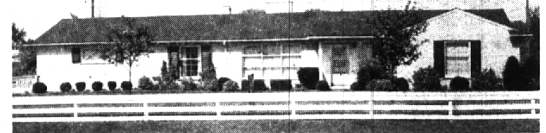
**WING LAKE PRIVELEGES**

WALK TO THE LAKE! Exceptionally well landscaped and planted site. Beautiful shrubs and perennials.

Large grey brick Ranch on large lot. Living room with fireplace. Dining ell. 3 Bedrooms. Kitchen and Breakfast nook and built-in oven, stove, refrigerator, stainless steel. AIR CONDITIONED.

Huge patio across the rear of house with shuffle board court.

House and yard are ABSOLUTELY IMMACULATE. MOVE RIGHT IN. \$33,500.



or  
Wherever you want to live—

SEE US— We are now affiliated with the largest inter-continental referral system in the entire United States. Reputable—Reliable—Resourceful American Institute of Marketing Systems, Inc.



**SNYDER KINNEY & BENNETT**  
INC.  
Realtors

239 S. Woodward, Birmingham 32740 Franklin, Franklin MI 4-7000 MA 6-9600

**TARGET DATE-Next Week**

Don't miss seeing the newest in modern  
Real estate merchandising at . . . Hall & Young, Inc.



Nestled on a tree shaded lot with privacy to the rear. 3 "furniture-ease" bedrooms. Tile bath plus convenient lav.

Studio, beamed ceiling in living room. Cheerful, spacious kitchen. Full basement—carpeting. \$22,500. (\$18,500 existing mortgage).



Well maintained investment duplex. Each unit has 2 bedrooms, living room, dining room, kitchen, basement and garage.

Walking distance to schools, shopping and Woodward bus. Both units rented—income \$300 mo. Priced at \$29,500.

**HALL & YOUNG**

INC.  
REALTORS

BIRMINGHAM OFFICE  
345 S. Woodward MI 6-7900

BLOOMFIELD OFFICE  
4114 W. Maple MA 6-5900

INTER-CITY REAL ESTATE  
REFERRAL SERVICE, INC.

from cities across America . . .  
buyers for Birmingham  
& Bloomfield Homes



CHARTER  
MEMBER

**Today's  
BIG  
BUY**

at  
**HAZEL PARK  
FLOOR COVERING**

**SANDRAN**  
FLOOR COVERING

NOW ONLY  
**\$149**

- Easy to Clean
- As Stain Free as a Floor Can Be
- Resists dirt, grease, acids, lye!

**FREE**  
1st Square Yard  
with each 9x12 or over.

**Hazel Park  
Floor Coverings**

Open 9-6; Thurs. & Fri., 9-9;  
Sun. 10-3  
4718 N. Woodward Ave.  
(Southeast Cor. of 14 Mile)  
TEL. 549-6633