

COMPLETE ASPHALT PAVING SERVICE

OAKLAND Paving Company

- Driveways
- Parking Areas
- Subdivisions

LI 6-5400
LI 6-2462

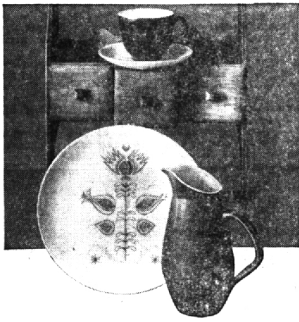
"Free Estimates"



TED RANCONT JR., son of Mr. and Mrs. T. J. Rancont, 4701 Maple Road, Birmingham, was first prize winner in the minor division of the Avery and Jule Hopwood competitions at the University of Michigan. Ted received the top award in the drama division for a play. The annual creative writing awards presentations were made at Ann Arbor on May 23. The Birmingham youth is a student in the university's literary college.

Only one of over 300 Open Stock Dinnerware Patterns offering top selections and priced to give top values.

Franciscan earthenware
Spice



A delightful pattern in which pieces are varied as you see them here... some spiced with a provincial design, others surfaced with a shining khaki brown or neutral oatmeal color. All oven safe, detergent and dishwasher safe and color-sealed for your lasting protection.

16 pc. set for four... 19.95

SPECIALS

Lovely 45 Pc. Sets of Texas Plastic Dishes	\$18.95 and \$19.95
45 Pc. Sets of White China Service for Eight, Special Selection	\$19.95
Earthenware Dinnerware—45 Pc. Set—Service for Eight—Lovely Decoration, Special Selection	\$12.95

Pontiac Pottery

Michigan's Largest Dinnerware Specialty Store

OPEN EVERY DAY 10 A.M. to 8 P.M.

NORTH END OF MIRACLE MILE SHOPPING CENTER ON TELEGRAPH ROAD

Telephone FE 2-8642

OUR FAMOUS Potted **ROSES** Bushes ARE NOW IN BLOOM

This is one of the best crop of roses we have had. Over 100 Varieties. Prices start at—

\$2.25 to \$3.95 ea.

"Quality has no Substitute"

THEISEN'S GARDEN MART

3826 N. Woodward, Royal Oak LI 9-4422

MORE FOR YOUR MONEY... IN A BLUE STAR GAS HOME!

Yes, you get more for your money when you live in a home built to Blue Star standards because every Blue Star Gas Home has a number of important extras in the form of built-in Gas features.

- Carefree, thrifty Gas househeating.
- An ultra-modern Gas range with automatic oven and top burners.
- Fully-automatic Gas water heater for "hot water plenty".
- Piping to supply all Gas appliances for now and in the future.
- A Gas outlet in laundry area for a Gas clothes dryer installation.

And, not only do modern Gas appliances operate efficiently and effortlessly... but Gas appliances save you money because of lower operating costs.

CONSUMERS POWER COMPANY

GO MODERN—GO GAS

Live Modern For Less... with Natural Gas!

Potpourri

(Continued from 1-D)

holds 700 seats. There are reserved and general admission seats.

The music was written by Mrs. Charles Himelhoch, with lyrics by Dean Coffin.

There are wonderful parodies, funny, light numbers and lovely romantic duets.

Probably the most impressive number is the "Song of Detroit"—a strong and serious tribute to the city. Words, which are to be partially sung, partially spoken, tell a simple direct story of its greatness.

MEMBERS of Detroit's Freedom Festival committee heard the song and made a trip to Isabelle Himelhoch's home to listen to a special tape sung by Bob Dearth.

As a result, the song is being featured in an outdoor musical pageant during the week long Freedom Festival, beginning July 4.

Three officers from The Bloomfield Art Association, Robert Bender, Paul Averill and Albert de Salle, selected the small bronze relief by Marshall Fredericks which the city gave to Mayor Cavanagh during Michigan Week.

Entitled "The Lucky Sheep", the plaque is one in a series of 12 that Marshall Fredericks did on agriculture several years ago.

It seems to me a perfect choice.

IF ANY ONE work could be said to express and dominate the new architectural landscape of Detroit, it is Marshall Fredericks' "The Spirit of Detroit"—the giant, green-bronzed statue in front of the City County building.

Mayor Cavanagh now has the pleasure of owning personally a happy, gentle work by the man who has brought beauty and meaning to the city.

IN VIEW of St. Dunstan's June 8 opening of "Look Homeward Angel," the Baldwin Library has set up a small display of books by and about Thomas Wolfe.

As a book, "Look Homeward Angel," is often long and overwiping in the story it tells of Wolfe's boyhood and tragically-ridden family. But as a play, the giant story has been reduced and simplified to one of the finest dramas I've ever seen.

The play is being given June 8, 9, 15, and 16 in the Greek theatre at Cranbrook.

IT IS most impressive to see that awards donated to the Birmingham Arts Festival for prizewinners in the art exhibition have increased by \$400 over last year's contributions.

Back in April, Mrs. Carl Rogers and Mrs. Don Ahrens began contacting individuals, organizations and firms with the hope of meeting last year's \$850 total. Through their efforts and the generosity of those contacted, \$1250 has been raised to be used for 16 awards.

THE COMMITTEE is particularly pleased with the "Best of Show" award. It was Mrs. Robert VanderKloot who suggested that this important award, be given by a group rather than one individual to indicate the group support behind the entire festival.

That started the ball rolling and eight women have contributed to the \$300 award. Donors include Mesdames Don Ahrens, Albert de Salle, Alex Gow, Oscar Lundin, Francis Nobel, Carl D. Rogers, John M. Seaman, Robert VanderKloot, Edward E. Wilson and Thomas E. Wilson.

Festival

(Continued from 1-D)

separate building outside the Hatos home.

NOT FAR AWAY, at 20855 Southfield Road in Southfield, is the contemporary structure where ceramist and sculptor Betty Conn developed her technique with fused glass which tourgoers will see. The family's living quarters separate her studio from the offices of architect husband, James Conn, at the opposite end of the structure.

The studios of a self-styled "Sunday Painter", Mrs. S. L. (Micki) Noble, are included on the tour. Mrs. Noble's studio, 6701 Spruce Drive, was created from an extra room in her home.

PATRICIA ANN Marsh Weaver will open her studio at 381 Cranbrook, Bloomfield Hills to the tourgoers.

Patricia, a junior at Kingswood School, has won national awards for rugs from her busy studio. They are housed in a garage studio near Christ Church in Cranbrook.

Tickets for the studio tours will be available at Wilson Drug, Grinnell's, Green's, Little Gallery, The Village Bookshelf, Smiley Brothers and the Birmingham Art Center.

Getting ready to sell your car? Advertise it in the Classified Ads.

Northland Playhouse Schedules Ten Plays

Northland Playhouse enters its seventh consecutive season on Tuesday with television's "Ferry Mason." Raymond Burr, who will star in last season's Broadway comedy "Critic's Choice." Featured with Burr will be Patricia Smith, both members of the National Co. which has been touring in the play.

Burr will also inaugurate a 14-week season, from June 12 through Sept. 16, the longest at Playhouse. There will be 10 plays, composed of straight comedies and musicals.

FOUR MUSICALS will be presented: "The Music Man," June 20; July 8; "Fiorello," Aug. 7-12; "Bye

Bye Birdie," Aug. 21-Sept. 2; and "Flower Drum Song," Sept. 4-16.

THE SEASON'S performances also will include "Roman Candle" with Arlene Dahl and Lew Patterson; "Champagne Complex," with Anthony George and Julie Newmar, July 17, 22; "Marriage-Go-Round," with Ozzie and Harriet Nelson from July 24-29.

Others are "The Complaisant Lover," with Walter Pidgeon and Martha Scott, July 30-Aug. 4; "God Bless our Hank," with Ann Southern, Aug. 11-19.

The Pleasure of Your Company Is Requested At

Town & Country Camp

26600 HAGGERTY (South of Twelve Mile Road)
Sunday, the tenth of June, nineteen hundred and sixty-two

OPEN HOUSE 1:00 TO 5:00 P.M.

Plan to visit us and spend an enjoyable afternoon in the country with family, friends... refreshments will be served

Our staff will be pleased to take you on a tour of our own

PRIVATE CAMP SITE, SWIMMING POOL, DINING ROOM AND OTHER FACILITIES...

MA 6-6308
GR 4-8340

Leona & Mort Kanfer
Directors

IT'S DRAPERY TIME

at **Bessenger's CUSTOM DRAPERIES**

REASONABLY PRICED—UNEXCELLED WORKMANSHIP

FOR EXAMPLE: 10 FT. WIDE AND FLOOR LENGTH

\$47.50 Per Pair

LABOR INCLUDED (Using \$2.50 Per Yd. Fabric)

BESSENGER'S

"Since 1927"

Ferdale Store: 23535 Woodward LI 1-4936

Northland Center Store: Facing Stouffers—Enter Lot H EL 6-0331

ROSE GROWERS

New treatment destroys aphids and thrips from within

New systemic-action Greenfield Rose and Ornamental Spray contains a powerful new insecticide. This chemical not only kills insects on contact but is absorbed into the plant's system, and circulates along with water and nutrients. While the insecticide is harmless to plants, it is deadly to aphids, leafhoppers and mites that attempt to steal plant juices at any point. Since the chemical tends to flow to plant tips, new growth—where insect damage is often most severe—is also protected. Control of sucking pests lasts up to two weeks since the plant is protected from the inside and rain cannot wash off the systemic insecticide.

Greenfield Rose and Ornamental Spray also contains DDT, which provides additional residual protection against a wide variety of chewing insects. To prevent damage from rose insects, spraying should begin in early spring and be repeated every ten to fourteen days throughout the growing season.

Many other Greenfield products are available to provide protection against rose leaf blackspot and powdery mildew—Come in and ask for further information on rose care.

Greenfield Rose and Ornamental Insect Spray 8 oz. \$1.98, 1.98, 2.98

Greenfield Rose Dust 1 POUND REFILL PACKAGE AVAILABLE AT \$1.99, 8 oz. Lower Rate \$1.49

MASKILL HARDWARE

Weekdays 'til 8:00 P.M. Saturday to 6:00 P.M. Sunday 10:00-2:00

4400 No. Woodward LI 9-3333 Royal Oak