

# Three Sources of Revenue Available to Townships

This is the first in a series of articles on West Bloomfield Township. It explains the township's tax structure. The next article will deal with governmental operation, and the third will explain the characteristics of the township.

BY SAVILLA SLOAN  
Special Writer

**WEST BLOOMFIELD**—Townships have three sources of income from which general operating funds are accumulated. A township gets a portion of the 15-mill county property tax

collected from property owners in the township (plus any additional millage voted by township limit-owners for the exclusive use of the township).

It also receives a portion of State liquor, sales and intangible taxes on a population percentage. Thirdly, local fines, fees and service revenues bring in a small amount of income.

**WEST BLOOMFIELD** Township had an equalized property valuation in 1961 of \$35,524,473 of which the 15-mill tax was levied. Of the 24 townships in Oak-

land County, only four have higher valuation.

Last year, the county allocation board apportioned to West Bloomfield 1.40 mills of the 15-mill tax.

This raised \$74,934 of township revenue. An extra mill voted by township residents for its general operating fund brought in \$53,825. State tax rebates totalled \$111,727.

**ADDING** in local revenue and deducting delinquent property taxes, the township had in all an income of \$297,490 . . .

yet had difficulty keeping in the black. Operating on a stringent budget, it still paid out \$301,000 . . . slightly more than it took in.

Since the township stands fifth in the county in valuation of township property, residents in West Bloomfield have been reluctant to admit that the township has a monetary problem. Two years ago they turned down a proposal for additional two-mill tax to provide for capital improvement in the township. However, the problem does exist, and it will be extremely

acute, township officials insist, if voters do not renew the extra voted mill for general operating expenses which expire at the end of this year.

**THERE ARE** two reasons for the township's financial problem. Both are major improvements to living in the township and, in the long run, greatly benefit township development.

One is the Farmington Interceptor which provides city sewage for a large part of the township. The other is West Bloomfield Library. Expenses relating

to these two services put the township slightly in the red last year.

**THE TOWNSHIP'S** share of the cost of the interceptor was \$1,693,148, which must be paid in 30 years.

Theoretically, the yearly installment payments were to have been met from fees collected from home owners tying into the service. But, practically, until sewer laterals connecting neighborhoods to the interceptor are built, the tap-in fees will not meet the payments.

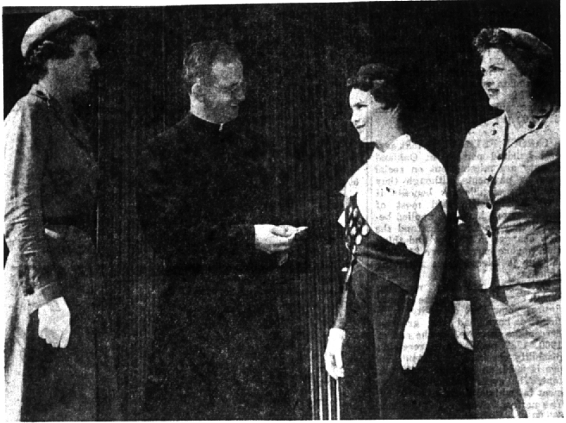
To meet a payment of \$85,000 due this past April, the township had to take \$37,000 from its operating account. Next April, a payment of approximately \$125,000 is expected to be short \$60,000 which will have to come from the general fund.

**EXISTENCE** of the library, which has enhanced the cultural life of the township, has been an ambitious program. The new building was erected through a special one-mill tax of three years duration which has now expired.

A major part of operating funds for the library are furnished from the township general fund. The township board has upped the \$24,000 it gave the library in 1961 to \$30,000 for 1962.

The library could only be kept open part time on \$24,000, but is operating full time with the additional income. But its budget is stringent, too. The library needs additional tax money to operate at its fullest capacity.

**THE** INDIAN property (See REVENUE, 7-A)



## Spiritual Award

Girl Scout co-leaders Mrs. William O'Brien (left) and Mrs. Edwin Walter watch as Fr. Stephen Malarek of Holy Name Church presents the Marian award to Anne O'Brien. Thirteen scouts from Holy Name Turn 272

received the award, the highest given by the Roman Catholic Church to Girl Scouts. It is presented for "spiritual merit and outstanding achievement."

**This and That**  
by George R. Averill

**2 Weekly Editors Who Measured Up To Job's Demands**

Among life's variety of experiences there is the one of friendship . . . and in the category of friendship is that rare one in which friends ask nothing of each other. Just to know such people, to be with them, to work with them in the fraternity of one's vocation . . . to enlist with them in a cause dedicated to the public good . . . have had several such friends . . . two of whom during the past year have reached "30" (printer's symbol for "the end").

One of these men was Schneider L. Marshall of St. Johns, Mich., who one day last summer was surrounded by flowers and friends as they gathered to pay their affection and respects to his passing "sky," as I knew him, published the Clinton County Republican in St. Johns for over 30 years. He truly was a community leader, as well as one who served his fellow-newspapermen in their State Press Association. His soul now as good as his bond . . . and he never refrained from speaking forthright, truthfully, as his head and his heart urged.

**Five Positions Open In Monday Elections**

Polling places for area school board elections will open at 7 a.m. Monday when voters line up to choose candidates for two places on the board of education.

Bloomfield Hills voters will elect one trustee with two candidates running and Southfield School District voters will have five men and one woman in a race for two seats on the board.

**THE BIRMINGHAM** School District has a total of about 31,000 registered voters. School officials said they expect a "fairly good turnout."

School officials in the Bloomfield Hills district expect a "normal turnout" of voters. The number of registered voters, about 7,500, is up from figures of a year ago.

**B'ham Police Still Seek Hit-Run Auto**

Birmingham police are still seeking a hit-run car that struck and injured a seven-year-old boy last Thursday.

George Aste, 529 Pierce, was struck near his home and dragged 50 feet under the car. He suffered multiple bruises.

Witnesses told police that the car, a 1959 black Plymouth four-door sedan or convertible, fled south on Pierce. Anyone with information regarding this violation is asked to call the Birmingham police.

**B'ham Police Still Seek Hit-Run Auto**

Birmingham police are still seeking a hit-run car that struck and injured a seven-year-old boy last Thursday.

George Aste, 529 Pierce, was struck near his home and dragged 50 feet under the car. He suffered multiple bruises.

Witnesses told police that the car, a 1959 black Plymouth four-door sedan or convertible, fled south on Pierce. Anyone with information regarding this violation is asked to call the Birmingham police.

**Music Teacher Honored By Professional Assn.**

Miss Phyllis Gardner, music teacher in the Birmingham Public Schools, has been selected as the "Teacher of the Semester." Miss Gardner was selected by the Teacher Education and Professional Standards Committee of the Birmingham Education Assn.

Miss Gardner, who was born in Grand Rapids, attended Hillsdale College where she received a degree in music. In addition to voice study at Hillsdale, she has studied in Detroit and at the American Conservatory of Music in Chicago. She received her M.A. degree from the University of Michigan.

Miss Gardner, 1345 Washington, Birmingham, began her career teaching in the junior and high schools in Hillsdale, and in Farmington, Michigan. She joined the Birmingham Public Schools in 1946.

Active in choir groups, she has sung with the Christ Church Choir, and directed a youth choir at Saint James Episcopal Church. She has been a choir director at the Birmingham Presbyterian Church since 1954.



MISS GARDNER

## County Democrats Seek Full-Time Executive Ass't

The Oakland County Democratic Committee soon will have a new full-time executive assistant. Sander Levin, Oakland County Democratic Committee chairman, will interview candidates for the position in the next few days.

Salary for the new post will be between \$7,000 and \$8,000 a year. Levin pointed out that the person for the new post will be selected with the advice of the executive board. Salary will be determined by the full executive committee.

County Democrats this week passed their goal of \$10,000 earmarked for salary and expenses of the full-time executive. The goal was reached, according to Levin, in just two months and with a total expenditure of only \$166 for miscellaneous expenses.

**"OAKLAND COUNTY** is the first Democratic District organization in the metropolitan area to raise money for a full-time executive assistant," Levin said. "We've done it through the tireless work of the fund-raising committee and through the generous contributions of the business and professional people of our community."

Lois Golden, Oakland County Democratic Committee treasurer, headed the fund drive, assisted by Mrs. Clifton Eldridge of Ferndale. The drive was a project of the Finance Committee, assisted by the Business and Professional Association of Oakland County, an arm of the Democratic Committee.



## B'ham Teacher To Be Honored

Howard L. Malwitz, coordinator of art and adult education for the Birmingham public schools, will receive an award in honor of his "outstanding services" to education during Teachers' Day ceremonies at the Michigan State Fair, Aug. 31.

Malwitz is president of the Michigan Art Education Association, a department of the Michigan Education Association.

Governor John Swainson will present the award to Malwitz, along with other Michigan educators who will receive Teachers' Day Awards.

Malwitz has taught in the Birmingham schools since 1953.

## PTA Establishes Memorial Fund For M. V. Ferguson

A memorial fund in honor of the late Beverly Hills School Principal Malcolm V. Ferguson has been started by the Beverly PTA Board.

Ferguson, 58, died of a heart attack May 23 while attending Michigan Week principal exchange festivities in Mount Pleasant.

The fund will be used for the future needs of the three Ferguson children, Kathleen J., 18, Bruce M., 16, and Thomas C., 11.

Contributions may be sent to the Beverly Elementary School, Beverly Road.

## Bloomfield Hills Electors Face Questions on Schools

BY SAVILLA SLOAN  
Staff Writer

Is Bloomfield Hills School District going to remain competitive with nearby school districts in the salary scale it offers its teachers . . . or is it going to lose a number of its better teachers who are being offered more lucrative teaching posts elsewhere?

Shall it operate at a deficit next year if it puts into operation the new schools which have been built since their authorization by a bonding issue in 1960?

Will classroom loads in two years have to increase from the ideal 25 pupils to 40 pupils because it cannot pay for additional teachers?

Shall the physical education program at the high school be limited because there are not enough gym facilities to accommodate the yearly increase in high school students?

**THESE ARE THE** questions which residents and property owners in Bloomfield Hills School District will answer Monday at their school election.

Three issues involving school millage are on the ballot, to be voted on separately.

The first proposal, which involves no additional taxes for district residents, is noncontroversial. It provides for a 15-year renewal of 5.6 operating millage which expires in the next three years.

**A THREE-MILL TAX** increase is asked in the second proposal. It is sought by the school board to provide for an increase in the teacher salary base and for 30 additional teachers needed to staff new schools opening in the district next fall.

The third issue was placed on the ballot by petition of school district patrons. It asks for a 28-year bond issue to build a swimming pool at a cost of \$200,000.

It would mean an immediate increase in school district taxes of a third of a mill, which would decrease in subsequent years as property valuations in the district increase.

**ALTHOUGH INCREASED** millage sought is 3.33 mills, school district officials have pointed out to residents that their total tax bill next year will not increase that much.

Because of a drop in millage needed to pay off bonded indebtedness, individual school taxes would increase only 2.88 mills.

To a home with market value of

\$20,000, the tax increase would amount to \$30, according to school board figures. For a \$30,000 home, the cost would be \$45 and for a \$40,000 home, \$60.

**A CONCERTED** effort to inform voters of the reasons behind the need for increased operating millage has been carried on in the past few weeks by both the school board and a volunteer group of school patrons.

A brochure prepared by the school board has been mailed to each home in the school district.

A public hearing was held last week by board members at Bloomfield Hills Junior High School with some 200 residents attending.

A question and answer pamphlet has been distributed by a group of citizens organized from the PTO council and other patron organizations.

**THE THREE-MILL** increase in taxes would not the school district an extra \$285,000 (\$200,000).

It would be absorbed, according to school officials, by an increase in the teacher-salary base, the salaries for additional teachers needed in the school district next year, and the cost of operating two new

(See ELECTIONS, 7-A)

## Village Police Solve Theft By 2 Girls

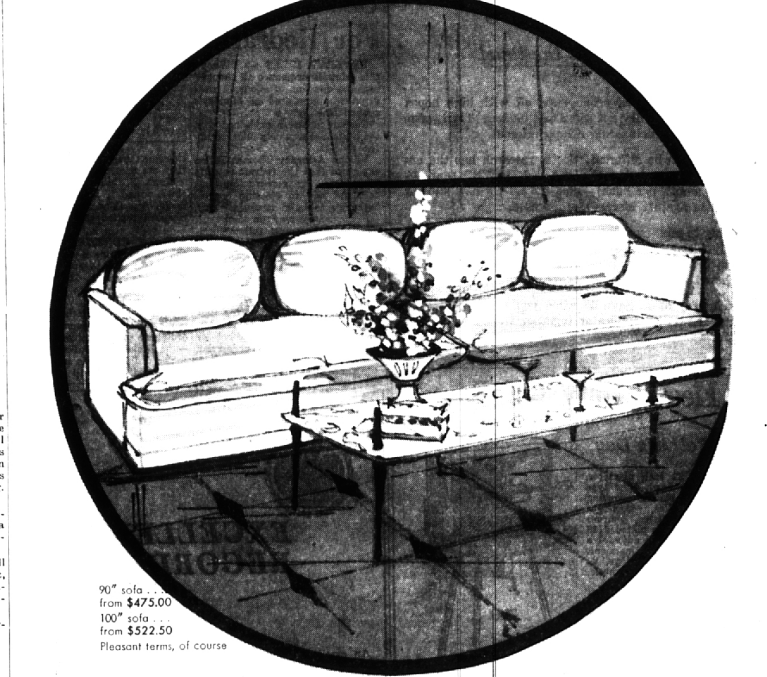
**BEVERLY HILLS**—Police solved a burglary in the village last week before knowledge of the crime had even reached them.

A 14-year-old Southfield girl had police see and a girl friend, 15, also from Southfield, broke into the home of Burton L. Elvig last Thursday. They made entry by breaking a window at the rear of the house at 21400 Kennaway Court.

**THE 14-YEAR-OLD** was taken to William Beaumont Hospital, following a call from the assistant principal at Groves High School Thursday afternoon. The school official detained the girl in the school office. Her condition was described by police as dazed. Remarks made by her in the hospital aroused police suspicion.

**POLICE QUESTIONED** the girl at her home after she was released by the hospital, implicating the other girl, she told police she and her friend had sampled food and liquor in the house.

**No action** was taken by police, pending the return of the homeowner who is out of town.



For the traditional pleasure you take in perfection, see **PERENNIAN** by HERITAGE

*Here is a collection edited for the connoisseur who, like us, respects the permanency of truly fine craftsmanship. To wit: this magnificent sofa. Four back cushions, filled with cloud-soft poly dacron punctuate the back—the seat, too, are the same lush poly dacron. A group of exquisite fabrics designed by Boris Krall, complete this picture of rare good taste that glorifies the elegance, grace and artistry of a more leisurely past.*

**BIRMINGHAM**  
the world's most exciting furniture store