

Compact Air Conditioners Do the Job

Families who postpone air conditioning because they plan to move are letting themselves in for hot-weather discomfort needlessly. Chances are they haven't taken a good look at the compact electric room air conditioners now on the market.

Many window models require no special wiring and can be installed without special skills or tools in a few minutes. When it's time to move, they can be removed just as quickly.

MANY MODERN room air conditioners go along to a family's new house just like their television set or portable electric dishwasher. All modern room air conditioners are designed to do four basic things: cool, circulate, dehumidify and filter the air. But capacity to provide cool comfort varies from model to model.

Since a unit that's too large is uneconomical, and one too small won't provide satisfactory cooling, a family planning to buy a room air conditioner can ask their appliance dealer for help in getting the cooling capacity just right for their needs.

THE DEALER can do this accurately, but needs a few facts about the area to be cooled: its size and use, number of windows and which direction they face, and whether circuits are 115, 208 or 230 volts.



Coming Next Week

Points to Check On Kitchen Plans

Here are six points to consider when planning a kitchen. Since good kitchen planning depends upon a thorough knowledge of the family's pattern of living, it is best to check these key points before discussing ideas with your lumber dealer, carpenter or contractor.

1. Will the kitchen be used for meals as well as food preparation?
2. Do you plan on entertaining quite a bit in the future?
3. Are there small children in the family who must be watched or fed in the kitchen?
4. Will teenagers want to use the kitchen for informal get-togethers?
5. Would the family like a comfortable relaxation area adjacent to the kitchen?
6. Do you want to include a laundry center in the renovated kitchen?

MANY OF THESE questions revolve around the question of how much room is available. An adjacent family room or laundry center cannot be included if there just isn't enough space, but a washer and dryer might be placed at the end of a food preparation counter.

An L-shaped bench in a corner of the kitchen would provide a spot for relaxation if a complete family room can't be included.

IF MEALS are to be served in the kitchen, space must be provided for a table, built-in nook or counter arrangement. These facilities are extremely versatile because they can be used by Mom for correspondence and by children for school and hobby work.

If there are teens who are learning to cook or you expect a great deal of entertaining, ample work and storage facilities must be included in the master plan. Provide a spot for Dad to store his refreshment supplies and set up a bar.

Efficient work space, good appliances and a workable layout will complete the first phase of a kitchen plan.

Keep a hair net rolled in your purse when you go on shopping sprees. Then, when you happen to see a dress you'd like to try on, you won't emerge with a tousled and disarranged hairdo.

Light scratches on mahogany and walnut furniture can be made almost invisible by carefully applying some tincture of iodine. When this is dry, rub down well with much about the family's habits wood to enhance the appearance of furniture polish on a dry cloth.

A KITCHEN should be personalized. Its decor can be harmonized with the dominant theme of the house, or it can be designed as a decorative highlight for the entire home.

Most interior decorators recommend a "split" decor, or one that has a dominant accent area. This can be accomplished by paneling the dining area in a high-fidelity woodgrain, for instance, to accent the eating facilities.

Widely used for kitchen installations because of its beauty and easy maintenance is plastic-surfaced paneling. Available at lumber dealers in a wide variety of woodgrains, colors and patterns, the paneling can be used to create an eye-catching decor.

Its baked melamine plastic surface is highly-resistant to heat, moisture and stains. A lamp or subway cloth will remove grease and grime from the impervious surface. It never needs painting or refinishing.

CONSTRUCTION TIME can be put to the minimum with this plastic-surfaced hardboard paneling, which is installed right over old walls and ceilings with wallboard adhesive.

The easy-to-handle material can be put up over framing if there are to be structural changes. Ordinary carpentry tools are all that's needed to install the paneling.

The paneling comes in four-foot panels, 12 inches by 8-foot planks and 16-inch square blocks. Washable ceilings that will never require decorating can be included in your remodeling plan if the plastic-surfaced hardboard blocks are specified.

Matching moldings are available with all types of the paneling. Complete installation instructions are included with each package of the prefinished paneling.

When the color scheme and materials have been specified, the second phase of the kitchen planning has been completed. Now you're ready to put the plan into action!

A house created exclusively for them.

The great architect also insisted on a site with surroundings of natural beauty. For this reason, Frank Lloyd Wright

A legendary practice of the late homes that came off the Wright

He did this, it's said, to learn as He also preferred windows of

He also preferred windows of



Jiffy Thirst-Quencher

A refreshing beverage is always welcome when family and friends come together for an evening of fun and good conversation. With an envelope of instant soft drink mix you can prepare a delicious thirst-quencher in a jiffy... and miss hardly a word. There's a wonderful new flavor combination out now—lemon-grape—sure to become a great favorite with everyone.

Sparkling Amethyst Cooler
 1 envelope lemon-grape instant soft drink mix 1 large bottle (about 28 ounces) ginger ale
 1 cup sugar

1 quart cold water
 Dissolve instant soft drink mix and sugar in cold water. Add ginger ale. Serve over ice. Makes about 2 quarts.
 If desired, use lemon-grape ice cubes.

To Make Lemon-Grape Ice Cubes—Prepare lemon-grape soft drink mix as directed on envelope. Pour into ice cube tray and freeze until hard.

Watering in Sunlight Won't Hurt Lawn.
 Don't be afraid to water your lawn anytime during the day. It is wasteful to sprinkle the lawn lightly because the water can evaporate and never reach the grass roots. The amount of water to use depends on the kind of soil, the kind and size of plants and so on, watering in the early morning or late evening may tend to reduce the amount of water lost through evaporation.

It is important during dry periods, such as July and August, to water the lawn thoroughly, but infrequently. "As a general rule, if it has not rained for a week let your garden sprinkler run for an hour in each place," says Watson.

It is important during dry periods, such as July and August, to water the lawn thoroughly, but infrequently. "As a general rule, if it has not rained for a week let your garden sprinkler run for an hour in each place," says Watson.

Strawberry Shortcake? Use Mother's Recipe

By CLEO SYMONS
 Special Writer

The other day a certain man of my acquaintance paid me the highest compliment. Laying down his spoon with a sigh, he remarked, "This shortcake tastes exactly like the kind my mother used to make!" I obliged when he asked for another helping and parred while he devoured it with gusto and a far-away look.

I suppose each of us has some favorite version of this summer delicacy. Perhaps you, too, recall a sweetened, rich biscuit, split in two, buttered and lavishly covered with ripe mashed berries. Over this was poured thick sweet cream—the kind that doesn't curdle on contact with the dark, fragrant juice.

To BRING OUT the best in both berries and shortcake, it had to be eaten while still slightly warm. Just warm enough to melt the butter, but not so warm as to melt the feather-light flakes, releasing a never-to-be-forgotten blend of flavors.

Cherries Now Available by The Bushel

The largest supply of red tart cherries the state has ever produced is now available to Michigan housewives for canning, freezing, pie making, or for conserve.

The Michigan Department of Agriculture has received estimates indicating a crop of 105,000 tons within the next few weeks. Last year's harvest amounted to 85,000 tons. The 1962 crop is expected to be the largest yet.

About 95 per cent of Michigan's cherry tonnage goes to processors. Less than half goes to canners, with freezers taking more than half. For the past decade the state has annually produced more than 50 per cent of the total national crop, and Michigan has long been the nation's No. 1 red tart cherry producer. This year the crop is estimated to be 62 per cent of the national crop.

THE MOST COMMON variety of red tart cherry grown in the state is the Montmorency. The variety is an old one that traces its ancestry, according to reports, to Montmorency, near Paris in France.

A popular ingredient for pies, Michigan red tart cherries have a wide variety of uses. They are utilized as a sauce to go with meat, in aspics, salads, and in baking.

Canned or frozen in the home, they are ideal for sauce as a dessert and lend themselves to numerous other dishes.

Most of the cherry crop is harvestable in the western part of the state in a narrow belt that parallels Lake Michigan from the Indiana line almost to the Straits of Mackinac. The heaviest concentration of production is in the Traverse City section where each year in July the National Cherry Festival is held.

Sweet cherry production for Michigan is estimated at 16,000 tons, 2,000 tons more than last year.

Supplies for Fruits Remain Plentiful

Supplies of most frozen vegetables, fruits and berries, as well as juice concentrates, will remain adequate to plentiful throughout 1962.

Look for attractive prices and increased advertising and promoting by national brands and trade groups to bring more shoppers to frozen food cabinets.

Fewer Farmers

The total number of farmers in Michigan has declined from 156,000 to 112,000 between 1949 and 1959.

ANNOUNCING
 Home Portraits
 now in
 Direct Color
 and at
 the Same Price
 as
 Black & White.
 Available
 at less than \$20.00

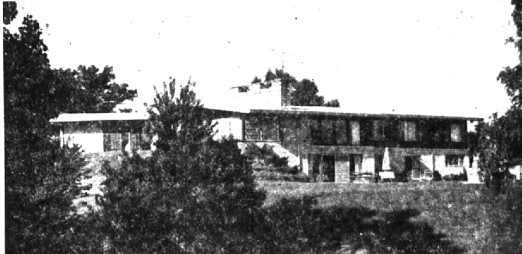
SWOBODA
 The Original Family PHOTOGRAPHER
 Phone OL 1-1931
 "We come to you from our Finishing Studio in Rochester"

SPLendor ON THE LAKE

5 Bedrooms — 4 1/2 Baths
 20 x 40 Pool



"Front" — 28 x 20 Sunken Living Room —



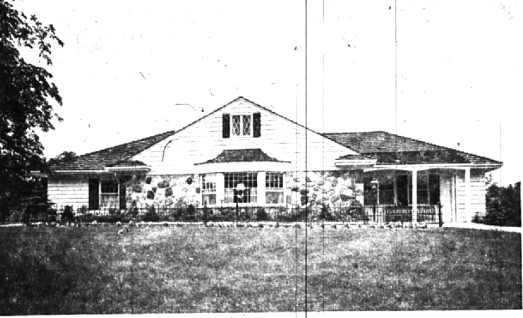
"Rear" — 76 Ft. Activities Room —



"Lake Side" — For Those Desiring the Ultimate —

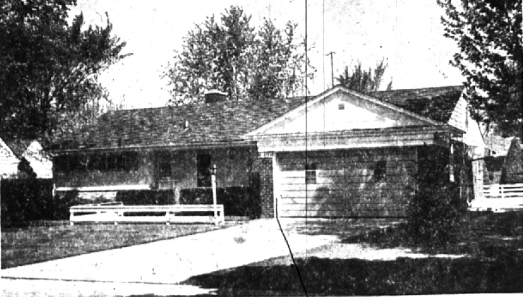
5,000 SQUARE FEET

Lake Privileges



Truly magnificent Bi-Level Mansion with gracious roominess for executive entertaining, 5 big bedrooms, 4 baths, paneled library, exquisite FAMILY Room. 5,500 square feet of quality living — Private Lake Privileges — Room to keep horses, too! Only 3 years old and more perfect than new. Land Contract possible.

BIRMINGHAM COUNTRY CLUB AREA



Exclusive location near Birmingham Country Club. Lovely, young, executive-type ranch with 3 bedrooms, 2 full baths, and very well kept 75 ft. site. 2 1/2 car att. gar. and a full basement. Near Midvale school. Priced to SELL at \$25,500.

We Will Take Your Present Home "IN TRADE"

CHAMBERLAIN CO. REALTORS

Ask Us About Taking Your Present Home "IN TRADE"