



### All-American Sandwich

Check your pantry shelf. You probably have all the ingredients at hand, so why not try these Sandwiches Americana right away? (Canned condensed bean with bacon soup, sauerkraut and frankfurters top rich slices of pumpernickel bread for a supper or lunch that's a treat. And, opening a can is just about all you have to do. The soup goes right from the can onto the bread to be topped then with canned sauerkraut, drained. Be sure, however, the soup is spread to the edges of the bread. The final touch is a frankfurter, slit edge-wise, on each sandwich. Spread the franks gently with ketchup and slip under the bread until franks and filling are hot. Serve with a flourish accompanied by icy glasses of tea and cold mouth-watering slices of watermelon.

#### Sandwiches Americana

- 1 can (1 1/2 ounces) condensed bean with bacon soup
- 1/2 cups sauerkraut, drained
- 4 slices pumpernickel bread, lightly toasted
- 1 frankfurter, slit lengthwise
- 1 cup ketchup

Spread soup on bread; cover with sauerkraut. Top each sandwich with a frankfurter; spread with ketchup. Broil until sandwiches are hot (about 8 minutes). Makes 4 servings.

## Here's A New Twist, Arrange Vegetables

If you've reached a plateau in arranging flowers and long to try something different, why not try vegetables—they're "plant material" too.

There are vegetables with foliage quite as lovely as the leaves of exotic plants from the tropics. Have you ever seen those of ornamental kale with their soft cream, pink, lavender and green leaves, to say nothing of their crinkled and frilled edges?

**BETTER GROW** some plants this year and amaze your competitors in the local flower show. Dark opal basil, an herb with unusually lovely reddish purple leaves of fairly small size, is headed towards winning blue ribbons for the canny arranger.

IT'S AN All-America Selections winner this year and is just as effective in the flower border as it is in a flower arrangement. Slightly lighter in color are the leaves of red cabbage. Outer and inner leaves vary a bit in shading so a monochromatic harmony is possible.

Rhubarb chard, with its crimson stalks and veins in artistically "crumpled" leaves, makes excellent line material for a summer arrangement.

**RUBY AND Bronze Beauty** lettuces may be grown as a border for a flower bed; their leaves picked and used at the bases of arranged-ment. Each variety furnishes a different and unusual color in



## HOMEMAKING



## Vacation Homes are Cheap—If You Add to Them Each Year

A vacation home can give a family a lifetime of enjoyment and it needn't cost very much. Almost any family that can raise the cost of a lot at a mountain or seaside can afford a vacation home. You can spend as little or as much as your pocketbook will stand.

For as little as \$500, you can start a vacation cabin and then add to it each year. You can have one of the popular A-frame styles, or you can use a flat roof design in country where snow is not a problem.

**YOU CAN GET** all the materials you need for an A-frame cabin at your nearest retail lumber yard. The basic frame of the cabin can be either 2x6s or 2x8s for the A-frame. The principal first step is to have a good foundation, and this can be of sturdy 4x2x10s or 2x12s.

In order to hold costs down you can use a two-inch decking for your floor, in which case you will want to have your joists about two feet apart.

You should build your floor and foundation for your sun deck, if possible, when you are building the floor for the main cabin. This will save you money.

In the case of the sun deck you should allow for a thin spacing between the floor boards to permit rain water to run off, but not wide enough to catch the heel of an unwary lady.

The A-frame is easy to build and shapely leaves.

Vegetable flowers are effective in arrangements too. Have you ever tried sprays of yellow brocoli flowers, or the holly-hock-shaped, cream-yellow blooms of okra?

What about the heads of royal purple and purple head califoyers? **AN UNUSUAL** arrangement may be made in early spring using the rose and chartreuse leaves of forced rhubarb with tiny pink new potatoes at the base. Later, use rhubarb chard with small green tomatoes or red cabbage leaves with white eggplant. Let your imagination run riot in this new field of plant material. Use vegetable leaves, flowers and fruits, with or without "real" flowers, for most dramatic arrangements. Narrow, symmetrical borders of

the main 2x6s or 2x8s can be joined at the top by bolts to give added strength. For walls, which are also roof in the A-frame style, you can use regular western red cedar siding and the overlap will give you adequate protection from the runoff of rain and snow.

Or, you can put on a sheathing of shiplap and then shingle the mountains or at the seashore.

A good starter cabin in the A-frame is 12 feet wide by 20 feet long. You can extend this as you have more money to spend. If you build your shower and toilet in a small, separate building, you don't even need a partition in your cabin.

You can keep plumbing costs to

the minimum by merely installing a sink and cold water tap, unless you wish to have hot water. Lighting can also be held to a minimum and it doesn't hurt if wiring is exposed in the cabin.

**AFTER ALL**, this is not intended to be a finished home; it is a cabin, and the rougher it is, the more enjoyment the family will get from it.

One good rule is to build the cabin so that it is easy to keep clean. You may wish to lay linoleum tile flooring so that sand and dirt from swimmers can be swept out without causing lots of extra work.

You can give one of these cabins a lot of life by judicious or even daring use of color. Try painting one wall a stronger color and the other a softer color for contrast. On the outside you can use color far afoot and to give the cabin character, although you can also let it weather to a soft grey with-out any paint.

## Homeowners Beset by Strange Green Things

The first summer in a new home probably is the greatest single factor in making a new homeowner dream wistfully of that well-lit, wood apartment.

For with warm weather, all sorts of strange green things sprout up around the house, totally unfamiliar things to the average apartment dweller.

These green things, known as grass, shrubs, flowers and weeds to old hands, can cause considerable frustration for the novice, who must learn to cut, prune, fertilize, mulch, re-seed, plant and weed.

**HOWEVER, MUCH** of the hard work and time spent on yard maintenance may be reduced by streamlining several phases of the operation.

This means eliminating a task by using your head, not just indulging a lazy disposition. Hand clipping of grass around trees, flower beds, shrubbery and sidewalks or driveways, is one such task.

loose black dirt around these obstacles permit the lawn mower to do the whole grass-cutting job neatly, without the necessity of crawling about the lawn clipping stray grass blades by hand.

**ANOTHER TASK** to eliminate is removal of dandelions by hand. Excellent commercial dandelion and crab grass killers are available.

They may be applied directly from the container in some cases, or mixed and sprayed from a sprinkling can. The sprinkling can also gives you a mobility which no heavy, cumbersome hose can match for watering flower beds or rose bushes.

Some chemical soil conditioners also may be sprayed evenly from a sprinkling can. These soil conditioners add vitality to an unambitious lawn.

**GRASS CATCHERS** attached to lawn mowers help eliminate another back-breaking job—raking grass clippings. However, at the

## Wayne Engineers Team Up for Soil Behavior Study

Michigan builders, motorists and residents may all benefit from soil research now in progress in a Wayne State University engineering laboratory.

When cottages and buildings sag, docks collapse or roads become rutted, "soil behavior" is an important consideration of engineers. Wayne is studying the specific behavior of Michigan soils, emphasizing research and theory in an area where practical experience and know-how are already fairly well advanced.

**ONE SIGNIFICANT** clue being looked into is the fact that after earth is dug up and remodeled, it loses some of its original strength and resistance to compressibility. How this strength is regained over a long period of time is also being investigated.

A more complete understanding of the remodeling process would have far-reaching application for construction projects, reports engineering Prof. Yehuda Klausner, who heads a five-man soil research team. Professor Klausner is also constructing a new type of machine which tests the strengths of soils.



### Dad's Pal

Dad's helper, and happy about it, is John Yates who shows it's not so bad to wash a car. If you're prepared for it. Dressed in his swimming suit, John is prepared and as he scrubs the hood he's ready in case some water should come his way. He lives with his parents, Mr. and Mrs. Alan Yates of 2910 Masfield, Beverly Hills.

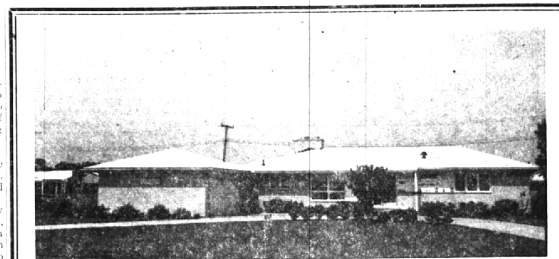
beginning of the season, it's a good idea to rake the lawn carefully to remove stones, fragments of metal, heavy sticks and other debris which can create mowing problems later.

A basket is a handy accessory on this preliminary raking job. Its light weight makes it easy to carry a load of debris.

The basket also is handy for transporting fertilizer, bulbs, hum-eliminate yard work. Water sweeper cracks concrete, and you'll simply have a tick painting job to do.

**AS THE NOVICE** gains experience in working around the yard, he will find his own shortcuts and the counter of table top, rub soon will begin to take pride in the results of his efforts.

Contrary to popular opinion, thickness of blades wrapped around an iron.

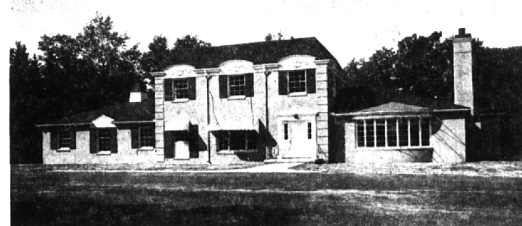


**VACATION AT HOME**—Your own 20 x 40 foot SWIMMING POOL shimmering in a beautifully landscaped patio area complete with Cabana. 3 bedroom ranch with convenient family kitchen, 2 baths and full basement. **FUN FOR ALL! \$29,500.**

**BIRMINGHAM** 315 S. Woodward MI 6-7900  
**BLOOMFIELD** 1111 W. Maple MA 6-5900  
**Showcase of homes**  
**Hall & Young, Inc., Realtors**



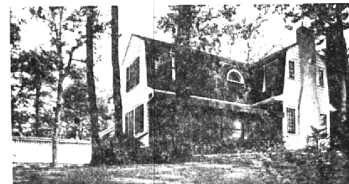
**BETTER THAN NEW . . . 4 Bedrooms** (All twin sized) Master Bedroom Suite with its own dressing room. 2 1/2 Baths . . . Oak floors. Superb Family room onto lovely patio which overlooks beautifully landscaped yard. Excellent closets. — only 32,900.



**NEWEST COMPLETION IN BLOOMFIELD HILLS. 5 Bedrooms — 4 bathrooms.** Master suite first level. Three family bedrooms second level. Service bedroom. Spacious foyer, family room, 3 car garage and all supporting appointments including nine foot ceilings; hot water heating and humidifying system. Lovely acre setting near the church and the foundation. 87,000.



**BI-LEVEL IN SUPERB CONDITION SURROUNDED BY TREES** — facing winding Oakleigh Drive in Bloomfield Hills — Florida Room on upper level—Recreation room opens onto covered patio. 4 bedrooms, 3 baths. 54,500.



**COLONIAL CHARM HIGH ON A HILL—4 Bedrooms.** Carpeting in living room; dining room and hall . . . Modern Kitchen . . . Walk to town and schools. Extremely fine value at just 24,900.



**MODERN RANCH IN LOVELY WOODED SETTING. 4 Handsome bedrooms . . . 3 Baths.** Built in Hi-Fi. Fireplace in living room and family room. Custom built Thermopane windows. Beautifully landscaped. \$42,500.

# Weir, Manuel & Snyder, Inc.

298 South Woodward  
Birmingham, Michigan Realtors

Phones: Birmingham 644-6300  
From Detroit 566-2323