

NEWS OF BUSINESS

\$6 Million Subdivision Opens in W. Bloomfield

The Thompson-Brown Company has opened Kimberley-North, its new \$6, million, 250-site subdivision in West Bloomfield Township. Kimberley-North is located on 14 Mile Road between Northwest and Middlebelt. Two garden-lit, landscaped boulevard entryways set off the site which includes 15 completely landscaped and furnished display model homes.

They are in the \$24,950 to \$27,950 price range.

THREE, FOUR and five bedroom tri-level, colonial and split-level models are to be included in the new trends in the home building industry.

Unique features will include teak ceilings, a lazy Susan pantry, five variations of vinyl asbestos slate, windowed walk-in closets including a walk-in linen closet and a completely built-in family room bar. One kitchen has a luminous ceiling.

Another home features a master bedroom suite fireplace and mirrored dressing room doors. A wide array of large entryways including two with winding staircases and kitchens in many patterns can be seen in these display models.

A BRONZE million home (electric) and a blue star (gas) home are among the models presented.

Kimberley-North Subdivision includes all the basic services — among them, a community water

system, city sewer system and hard surfaced roads.

Located just off the newly completed Northwestern Expressway route, Kimberley-North is within a short distance of the new East-West Expressway routes.

Schools are under the jurisdiction of the Farmington School District and free bus service is provided.

A NUMBER OF churches of various denominations are close to the subdivision. Shopping areas, including the Franklin Center, Franklin Village and Northland Shopping Center are minutes away.

Police and fire protection for Kimberley-North is provided by West Bloomfield Township. Display model homes are open daily and Sunlays from 11 a.m. to 6 p.m. and until 6 p.m. Saturdays.

Back from Confab

Donald Nolte, local agency head for The Columbus Mutual Life Insurance Co., Columbus, Ohio, recently attended a two-day Regional Meeting conducted by the company at St. Clair, Michigan. Northland Shopping Center are minutes away.

Remember, dial MI 4-1100 to reach Eccentric readers through efficient and economical classified.

THE BHAM ECCENTRIC Page 3-2 July 5, 1962

Henry McKenney To Head Chrysler Missile Division

Appointment of Henry F. McKenney as general manager of Chrysler Corp's Missile Division has been announced by W. S. Hakeslee, vice president-Defense-Space Group.

McKenney, formerly director-engineering and research for the Missile Division succeeds C. Allan Brady who is retiring after 36 years with Chrysler. Brady served as general manager of the Missile Division since its formation in January, 1958.

Currently the Missile Division performs research, development, engineering and manufacturing operations in Sterling Township, Mich., Huntsville, Ala., and Melbourne, Fla., and maintains a large field deployment force overseas.

McKenney has had more than 20 years of experience in research, engineering and management of missile and electronic systems. He has made significant contributions to the missile field, including guidance, analog and digital computation, navigation, fire control, and magnetic devices. His experience also includes research and development in combustion control. He is the holder of numerous U. S. patents.

HE JOINED Chrysler Corp.

in 1957 as chief engineer in charge of development programs, with overall responsibility for the development of the mobile Missile and missile systems. He has been in charge of the Nike Zeus target program and directional control for artillery missiles.

In May, 1961, he was named director of research, and eight months later became director-engineering and research.

A native of Morgantown, W. Va., McKenney, of Bloomfield Hills, was graduated from the University of Cincinnati in 1942 with a degree in electrical engineering. He later did graduate work at Polytechnic Institute of Brooklyn.

Prior to joining Chrysler, he was vice president of engineering for the Electronics Corp. of America, and before that was chief engineer of the Ford Instrument Division of Sperry Rand Corp.

BRADY JOINED Chrysler Corp. in 1926 after graduating from the University of Michigan with a bachelor of science degree in mechanical engineering.

He served in a number of positions in the company's Engineering Division until 1939 when he was named chief engineer of the Plymouth Division. During World War II, he played an important part in the successful adaptation of the Bofors gun and Corsair landing gear to mass production methods.

In 1948, he moved to the corporation's Subsidiary Operations staff, and in 1950 became staff assistant to the Special Products Planning Department.

Brady, of Birmingham, was appointed chief liaison engineer for the newly-formed Chrysler missile branch in 1952, coordinating the activities of Chrysler, its subcontractors, and the Redstone Arsenal in the development of the Redstone Missile System. He was named operating manager of Chrysler Missile Operations in 1956, the position he held prior to being named general manager in January, 1958.

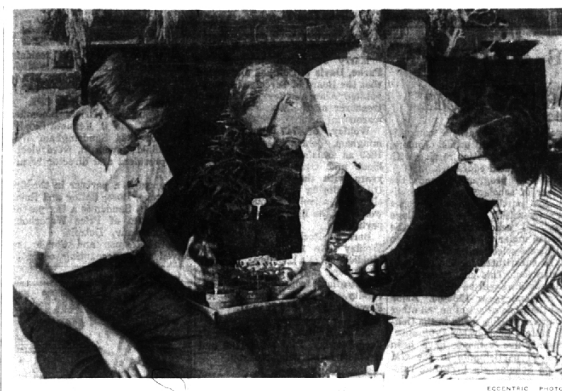
BLOOMFIELD TOWNSHIP OAKLAND COUNTY, MICHIGAN

NOTICE OF PUBLIC HEARING

TAKE NOTICE, That a public hearing will be held by the Bloomfield Township Board and Planning Commission of the Township of Bloomfield, on the 10th day of July, 1962, at 8:00 o'clock p.m., at the Bloomfield Township Hall, 4200 Telegraph Road, for the purpose of hearing objections to the comprehensive Zoning Ordinance for the entire area of the Township of Bloomfield, as recommended by the Bloomfield Township Planning Commission. The proposed Ordinance will replace and supersede the existing Zoning Ordinance of the Township.

TAKE FURTHER NOTICE that copies of the tentative text and maps of the proposed Zoning Ordinance are available for examination at the office of the Township Clerk during regular business hours.

Deloris V. Little
Township Clerk



MRS. STEWART F. SCHULTZ, of Mabel's Herb and Garden Shop, 2140 Walnut Lake Road, discusses the fine points of herb raising with her husband and son, Stewart R.

Mrs. Schultz is shown displaying an assortment of herbs, including sage, French sorrel, southern wood, French tarragon, wormwood and bedstraw.

Troy Resident To Head Simca Parts, Service

Theodore H. Bullard, of 281 Belhaven, Troy, has been named service and parts manager for U. S. Simca Sales, International Operations, Chrysler Motors Corp.

In announcing Bullard's appointment, Peter Nunez, General Manager, U. S. Simca Sales, said that "for the past several years, Bullard has served as service and parts manager of Chrysler's Export-Import Division."

"He comes to the Simca organization with a wealth of service and parts experience which will strengthen Simca's national service parts and dealer service training programs," Mr. Nunez said.

Born in Brandon, Manitoba, Canada, Bullard was graduated in Mechanical Engineering from Notre Dame University, South Bend, Ind., in 1924. After working as a service engineer with a large Detroit automotive manufacturer he opened his own automotive service business in 1936. Bullard joined the Dodge Division as service engineer, being promoted to assistant service promotion manager.

Pontiac Sales Up 59% Over Year Ago

Retail sales of 15,529 new Pontiacs and Tempests were reported by dealers during the middle 19 days of June, it was announced today by Frank V. Bridge, general sales manager for Pontiac Motor Division.

This represents an increase of 59 per cent over the same period a year ago when the figure was 10,054, Bridge said.

For the first 20 days in June, Pontiac and Tempest deliveries total 30,222, Bridge said. He added that Pontiac has sold 383,836 cars since the new models first went on sale last September. This is 47,838 more than were sold during the entire 1961 model year.

Promoted by Agency Named Chairman

Stephen J. Adams, of 18469 Dorchester, Lathrap, has been elected chairman of the greater Detroit section of the American Society for Quality Control. A d.a.v.s. Quality Control Manager of Wolverine Tube Division, Calumet and Hecla, Inc.

Behind The Store Fronts

Just off Walnut Lake Rd., about a half mile east of Inkster Rd., stands a large, red barn, faded by many years of summer sun and winter rains. It and the old white farmhouse nearby are the remaining landmarks of the old Broughton farm.

The widest dreams of the early settlers (for that matter of most people 20 years ago) would never have envisioned what has happened — and is happening to those broad, rolling farm acres. Bulldozers have slashed through to create hundreds of modern ranch and split level home sites which are being developed by Thompson-Brown Co.

The days of the old red barn are probably numbered. When it goes, a nostalgic visible link will have disappeared for the Stewart F. Schultz family of Stewart's Lawn Maintenance and Mabel's Herbs at 2140 Walnut Lake Rd.

For this old red barn housed the equipment when the business was purchased in 1958. Superior service was the Schultz's first thought, and they were rewarded accordingly with a rapid growth in business which necessitated the present store and shop in the Walnut Lake business section.

ORIGINALLY THE idea for the

John Mushong Promoted by Ford Motor Co.

John Mushong, of Bloomfield Hills, has been named general product engineer of prestige bodies at Ford's Research and Engineering Center.

Prior to the appointment he was senior principal design engineer in Lincoln-Thunderbird body engineering and has been with Ford since 1952.

Raised in Detroit, Mushong graduated from Cass Technical High School in 1937, and is a 1947 graduate of the Edgewood DeBout School of Planography and Surface Development for automotive body engineers.

He began his automotive career in 1937 and worked for several major automotive manufacturers in the Detroit area. He joined Ford in 1953 as a design engineer.

Later he was assigned to the Continental Division body engineering activity as a section supervisor. In 1947 he was promoted to department manager in charge of body engineering for the Lincoln car.

In 1961 he was named Senior Principal Design Engineer responsible for Lincoln and Thunderbird body activities and remained in that post until his present appointment.

Mushong, of 6247 Clarendon, is a past chairman and present member of the American Society of Body Engineers. He also belongs to the Engineering Society of Detroit.

Jam Handy Honors Local Residents

Jennings Hammer, 1259 Yorkville, Birmingham, vice president motion picture and industrial theater planning, The Jam Handy Organization, recently received a gold watch from President Jam Handy on the completion of 25 years with the organization.

Other members completing 25 years service with Jam Handy include George B. Finch, vice president-sales development, of 1280 Latham, Birmingham.

Remember, dial MI 4-1100 to reach Eccentric readers through efficient and economical classified.

THE RIVERSIDE INN

LELAND, MICHIGAN

Enjoy a delightful quiet inn and resort in a quaint village surrounded by Beautiful Lake Leelanau, and Lake Michigan. Beautiful grounds. Two dining rooms, serving wonderful food, facing the LeLand River. Swimming, fishing, and boat marina. Rooms available by day or week. Phone Clinton 69851 or write for brochure RIVERSIDE INN, LELAND, MICH.

TO EVERY PRESCRIPTION WE ADD . . . INTEGRITY

You can depend on our pharmacists to give you the highest quality of "just what the doctor ordered."

Depend on us whenever you want the best in medicines, drugs and sundries. Buy where your health is the first concern.

Cranbrook Drugs

2511 W. Maple at Cranbrook MI 7-0334

PHONE FOR FREE DELIVERY

NOW! MORE POWER in a riding rotary mower

NEW LAWN RANGER

Guaranteed by the mfrs. of Wheel Horse tractors.

• Floats a mower 32" wide • Totes the power of 5 1/2 horses...geared up by famed transmission

The only similarity between Lawn Ranger and other riding mowers is function. In construction, comfort, agility—Lawn Ranger is like a tractor. Big lawn grip tires, 3 speeds forward plus reverse, easy electric or manual starting, non-scalp mowing, independent mower brake— isn't this the rider for you, and your lawn!

AS LOW AS . . . \$429⁹⁵

With 32" Rotary Mower Attachment \$429.95

SPECIAL SALE On new 1961 Riding Tractors \$100 OFF (k.d.)

MANUS POWER MOWERS, INC.

3116 N. Woodward Ave., Royal Oak (2 Bks. So. of 13 Mile Road) Open 8 to 5 Daily—Saturdays 8 to 6 P.M. LI 9-2440

EVERYTHING FOR YOUR HOLIDAY WEEK

PICNICS BARBECUES PATIO PARTIES

• No. 1 CHOICE STEAKS & CHOPS • FRESH VEGETABLES
• GROUND BEEF • QUALITY GROCERIES

CONVENIENCE & VARIETY DELIVERY SERVICE

Charge Accounts Invited

QUARTON FOOD MARKET

MI 4-5510

3 Modern Delivery Trucks to Serve You.

1744 W. Maple at Chesterfield PLENTY OF FREE PARKING MI 4-5510

NORTHLAND CENTER HAIR REMOVED FOREVER

• FACE • BODY
• ARMS • LEGS
• HAIR LINES SHAPED

WOMEN — MEN
NEW SHORT WAVE DIAL-O-MATIC SYSTEM

REMOVES 1000 HAIRS AN HOUR

HOURS 10 to 6 EL 7-2262 FREE CONSULTATION

DOROTHY STOFER — T. LANCER
BC 13 COMMUNITY CONCOURSE

CHET SAMPSON announces the "LAST CALL" for his Western Tour

July 28—August 31

This Tour covers 14 states and eight national parks: Yosemite, Yellowstone, Tetons, Bryce, Zion, Grand Canyon, Mesa Verde, and Rocky Mountain National Parks. Also San Francisco, Salt Lake City and Lake, Hollywood, Las Vegas, Hoover Dam, Black Hills, Mt. Rushmore, Badlands, Petrified Forest, Painted Desert, Laguna Beach, Colorado Springs, and many more.

Applications and information available at

Chef Sampson Travel Service

100 Kercheval, Grosse Pointe TUxedo 5-7510

investors!

Here's a Timely Report on 15 Prominent Stocks Currently Yielding 5% or more

This specially compiled report discusses 15 companies representing a wide cross section of industry. Each company has a reasonable price/earnings ratio, and each is currently yielding 5% or more. All are listed on the New York Stock Exchange.

Mail Coupon or Phone Today for Your Free Copy

Watling, Lerchen & Co.
Creson Bldg., W. Maple and Cranbrook Rd., Birmingham, Mich. Phone: MI 6-9100

Please send me your special report on "5% Yield Stocks"

NAME _____
ADDRESS _____
CITY _____ ZONE _____ STATE _____

WATLING, LERCHEN & CO.

MEMBERS NEW YORK STOCK EXCHANGE

Detroit • Ann Arbor • Dearborn • Jackson
Kalamazoo • Lansing • Pontiac • New York

NOTICE OF PUBLIC HEARING

TAKE NOTICE, That a public hearing will be held by the Bloomfield Township Board and Planning Commission of the Township of Bloomfield, on the 10th day of July, 1962, at 8:00 o'clock p.m., at the Bloomfield Township Hall, 4200 Telegraph Road, for the purpose of hearing objections to the comprehensive Zoning Ordinance for the entire area of the Township of Bloomfield, as recommended by the Bloomfield Township Planning Commission. The proposed Ordinance will replace and supersede the existing Zoning Ordinance of the Township.

TAKE FURTHER NOTICE that copies of the tentative text and maps of the proposed Zoning Ordinance are available for examination at the office of the Township Clerk during regular business hours.

Deloris V. Little
Township Clerk