

The Birmingham Eccentric Features

NATURE NOW Conservation Dependent On Certain Precautions

By Lydia King Frehse
Special Writer for The Birmingham Eccentric

The July 4th holiday marked the beginning of the rush northward, not only for our own city-bound populace but for an influx of tourists from all over the United States. All these descend like hungry hordes, taking over roadside tables and restaurants, camp sites and cottages, forest, stream and lake.

No one likes to clean up some other fellow's littered camp site. It costs five minutes of your time to use the trash and garbage cans provided for this purpose by the state.

DO CARRY a trash bag in your car. Who likes to see beer cans, pop bottles and papers tangling with the road-side flowers, shrubs and ferns?

Do you pick flowers indiscriminately? Acquaint yourself with the list of Michigan's protected plants. You could be fined for disturbing any one of them. Most wild flowers picked on a trip never reach the confines of a vase; they are an ignominious death on the floor or the back seat of your car.

A lake or a river is as safe for you and for me as the purity of its water. Nature knows how to keep it so and practices what she knows. Will you do the same?

BE TOLERANT. What is your meat may be another's poison. Some of us like to hunt. Some like to take pictures. Some like to fish. Some like to view the countryside at the top speed limit. Some just like to eat and sleep in a remote spot.

You have a contemporary-style ranch house. You must keep your lawn uncluttered, with your planting beds in front of the plain lines. At least one third of the chosen plants should be in the evergreen category. You should not have tall perennials or annuals which might flood around with the wind.

The "tailored look" is correct for the contemporary home.

NEW Dream Car To Bow in at Fair

Ford Motor Company's newest dream car, with four front wheels and two interchangeable power units, will be introduced at the Seattle World Fair.

Called the Seattle XXI, the car would incorporate a travel programming computer, variable density glass, jalousie windows and fingertip steering.

Kene Bordinat, Ford vice president-director of styling, describes the Seattleite as "an example of the kind of key break-throughs in automotive styling and engineering that lie ahead."

The 3 1/2-scale dream car, featuring delta-shaped blades and steering line styling, was developed in the Advanced Styling Studio at Ford.

Off to Illinois

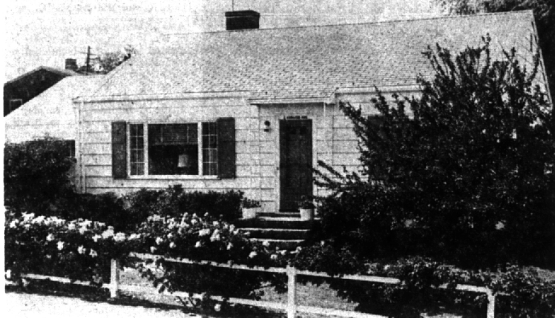
Dr. Justus R. Pearson, 1255 Northover, Birmingham, has been named the chairman of the English department at Illinois Wesleyan University. Dr. Pearson formerly taught at MSU.

Maximum recorded depths of the Great Lakes are 1,333 feet for Lake Superior; 923 feet for Lake Michigan; 750 feet for Lake Huron; 23 feet for Lake St. Clair (excluding channels); 210 feet for Lake Erie; and 778 feet for Lake Ontario.

Both will study Tamil, a tongue spoken in the Madras region of southern India, in the University's South Asian studies program. This is a special summer program in which a normal academic year's work is covered by going to class twelve hours a week instead of a normal three or four hours.

Back in the Water Again

Emerging from their winter hide-away, these two saxons, Sir Lancelot and Lady, are set for another summer in Quanton Lake. When winter's ice melts, they leave their



Climbing roses drape themselves over the long, low white fence in front of this Colonial saltbox home, adding to its charm. Skillfully located shrubs and plantings soften the plain lines while implementing the period effect.

DOWN TO EARTH Plants Can Enhance Total Effect Of Home's Architectural Design

By ALICE WESSELS BURLINGAME
Special Writer for The Birmingham Eccentric

When you are planning the planting design for your home, remember to keep the total effect compatible with your house architecture. If you have a saltbox colonial house, you can have a fence with roses on it across the front of the house, perhaps with a lamp at the end of the fence adjacent to the driveway.

RECENTLY, the M. M. Schimpke's home was open for the benefit of the Detroit Garden Center. The guests saw a large waterfall which recirculated 1,000 gallons of water from an 80-foot well, with a 22-foot drop. The formation for the falls was made of volcanic rock from Ohio. Over 2,000 gallons of water evaporates per day from the water spill.

An abundance of evergreens, plus oak railroad-ties forming the steps up the hillside, complete a wonderful picture right within our area. A rose garden provides a foil for the beautiful pool, with the attractive cabana.

It is always heartwarming to see people, who possess so much beauty, share it with others. You may be sure that I asked permission to take some patients there to benefit from the curative effect of the waterfall.

PATIENTS who are very depressed respond to the adjunctive therapy of working in a garden. One fellow thought he really had the right idea. He secured "by hook or crook," some artificial flowers. Then he placed them in his garden row and we can't win him over to the idea that his garden isn't completed. You know, maybe he is smarter than we are.

The Arnold Pape's, 1181 Trowbridge Road, Bloomfield Hills, also shared their hillside site for interested gardeners to view. The elegance of the peaceful setting with the rose garden, pool and planting of annuals tempted me to relax in a comfortable chair and enjoy the Pape's creation.

"POND FOR Work And Fun," cooperative extension service, Michigan State University, is a booklet that anyone with low land (and at least an acre) can't afford to miss. It will tell you how you can develop a pond for fire protection, swimming and other uses. Under some qualifications, you can receive Federal aid when it is tied in with the conservation program. Contact your county agent if you are interested. You might have your private fish pond.

DID YOU EVER return to the area which meant so much to you in your childhood. Don't you recall the hills were "so high"—really mountains. The fields were so beautiful, everybody so friendly. Your columnist just returned to Steuben County, New York—the Brown County (Indiana) of the eastern state.

Somehow or other the hills aren't as high as I remembered them. The railroad no longer is running, so there isn't the bustle of the whistle echoing through the valley. Those gravel roads are paved and grandfathers' horses aren't poking his head over the barn door whinnying for attention.

There are a lot of well kept homes you could probably buy for \$5,000 and Nature is still puffing away as she produces abundant potato crops.

Lake Superior has the largest surface area of water of all the Great Lakes, with 31,820 square miles. Lake Huron is second with 23,010; Lake Michigan third with 22,400; Lake Erie fourth with 9,930; Lake Ontario fifth with 7,820 and Lake St. Clair is of course smallest, with 490 square miles.

Pack Intangibles In Camping Gear

Each spring, long before the snows are off the ground, thousands of mid-westerners are busy making plans for a vacation in their favorite state park campground.

Before vacation time rolls around, the amount of gear has been whittled down and plans changed a number of times—depending on the condition of the car springs and the durability of the vacation budget.

When the time comes to lock the front door for the fifth time—four last-minute trips inside having been made to turn off the water heater, check the stove burners, write a note to the milkman, and to transfer the note to the milkman from the kitchen table to the back porch—most families will have all of the equipment necessary.

FROM OBSERVATIONS made through the years, it is apparent that some piece of equipment which is neglected may be the one which provides the maximum enjoyment on any camping trip.

SENSE OF HUMOR: Several years ago a couple registered for four days in Fort Wilkins state park campground—moms was looking forward to a few days away from the house. Her seven-year-old and dad, a rabid fisherman, was going to whip the local waters to a froth.

Yet, two hours after they arrived their tent was down, the car repacked, and they were headed north back to Ohio. Mom had accidentally packed their seven-year-old's tackle box in place of dad's.

FRIENDLINESS: There's a such thing as a recluse in a state park. The physical aspects of the area necessitates close-quarters camping and campers are busy making plans for a vacation in their favorite state park campground.

WITSABOUTYOU!—There is nothing that can dull the fun of a camping trip as quickly or permanently as misplacing or losing a good wristwatch, an expensive camera or a favorite rod and reel.

OPTIMISM: Fortunately, most of the rains along the Great Lakes are of a short duration, so don't panic at the first downpour. Sit tight. The weather will break by tomorrow.

fully located shrubs and plantings soften the plain lines while implementing the period effect.

By ALICE WESSELS BURLINGAME
Special Writer for The Birmingham Eccentric

When you are planning the planting design for your home, remember to keep the total effect compatible with your house architecture. If you have a saltbox colonial house, you can have a fence with roses on it across the front of the house, perhaps with a lamp at the end of the fence adjacent to the driveway.

RECENTLY, the M. M. Schimpke's home was open for the benefit of the Detroit Garden Center. The guests saw a large waterfall which recirculated 1,000 gallons of water from an 80-foot well, with a 22-foot drop. The formation for the falls was made of volcanic rock from Ohio. Over 2,000 gallons of water evaporates per day from the water spill.

An abundance of evergreens, plus oak railroad-ties forming the steps up the hillside, complete a wonderful picture right within our area. A rose garden provides a foil for the beautiful pool, with the attractive cabana.

It is always heartwarming to see people, who possess so much beauty, share it with others. You may be sure that I asked permission to take some patients there to benefit from the curative effect of the waterfall.

PATIENTS who are very depressed respond to the adjunctive therapy of working in a garden. One fellow thought he really had the right idea. He secured "by hook or crook," some artificial flowers. Then he placed them in his garden row and we can't win him over to the idea that his garden isn't completed. You know, maybe he is smarter than we are.

The Arnold Pape's, 1181 Trowbridge Road, Bloomfield Hills, also shared their hillside site for interested gardeners to view. The elegance of the peaceful setting with the rose garden, pool and planting of annuals tempted me to relax in a comfortable chair and enjoy the Pape's creation.

"POND FOR Work And Fun," cooperative extension service, Michigan State University, is a booklet that anyone with low land (and at least an acre) can't afford to miss. It will tell you how you can develop a pond for fire protection, swimming and other uses. Under some qualifications, you can receive Federal aid when it is tied in with the conservation program. Contact your county agent if you are interested. You might have your private fish pond.

DID YOU EVER return to the area which meant so much to you in your childhood. Don't you recall the hills were "so high"—really mountains. The fields were so beautiful, everybody so friendly. Your columnist just returned to Steuben County, New York—the Brown County (Indiana) of the eastern state.

Somehow or other the hills aren't as high as I remembered them. The railroad no longer is running, so there isn't the bustle of the whistle echoing through the valley. Those gravel roads are paved and grandfathers' horses aren't poking his head over the barn door whinnying for attention.

There are a lot of well kept homes you could probably buy for \$5,000 and Nature is still puffing away as she produces abundant potato crops.

Lake Superior has the largest surface area of water of all the Great Lakes, with 31,820 square miles. Lake Huron is second with 23,010; Lake Michigan third with 22,400; Lake Erie fourth with 9,930; Lake Ontario fifth with 7,820 and Lake St. Clair is of course smallest, with 490 square miles.

Pack Intangibles In Camping Gear

Each spring, long before the snows are off the ground, thousands of mid-westerners are busy making plans for a vacation in their favorite state park campground.

Before vacation time rolls around, the amount of gear has been whittled down and plans changed a number of times—depending on the condition of the car springs and the durability of the vacation budget.

When the time comes to lock the front door for the fifth time—four last-minute trips inside having been made to turn off the water heater, check the stove burners, write a note to the milkman, and to transfer the note to the milkman from the kitchen table to the back porch—most families will have all of the equipment necessary.

FROM OBSERVATIONS made through the years, it is apparent that some piece of equipment which is neglected may be the one which provides the maximum enjoyment on any camping trip.

SENSE OF HUMOR: Several years ago a couple registered for four days in Fort Wilkins state park campground—moms was looking forward to a few days away from the house. Her seven-year-old and dad, a rabid fisherman, was going to whip the local waters to a froth.

Yet, two hours after they arrived their tent was down, the car repacked, and they were headed north back to Ohio. Mom had accidentally packed their seven-year-old's tackle box in place of dad's.

FRIENDLINESS: There's a such thing as a recluse in a state park. The physical aspects of the area necessitates close-quarters camping and campers are busy making plans for a vacation in their favorite state park campground.

WITSABOUTYOU!—There is nothing that can dull the fun of a camping trip as quickly or permanently as misplacing or losing a good wristwatch, an expensive camera or a favorite rod and reel.

OPTIMISM: Fortunately, most of the rains along the Great Lakes are of a short duration, so don't panic at the first downpour. Sit tight. The weather will break by tomorrow.

MID-SUMMER Clearance

Floor Samples Greatly Reduced

- Sofas
- Chairs

Visit our showrooms now and pick your favorite chair or sofa and 5-A-V-E

ELLIOTT'S
of WATERFORD

We are open Monday and Friday Evenings 6:19 P.M.

5400 Dixie Highway, Waterford OR 3-1225

Representatives will bring samples and Frame Catalog

Another beautiful example of DM & R's

Leadership in Service...



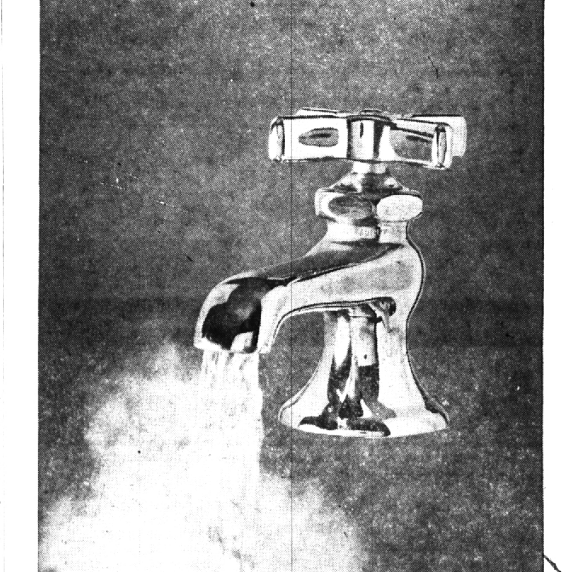
Detroit Mortgage & Realty Company is proud to be associated with William J. Pulte, Inc. in the development of Greenwich Green, a new community of fine suburban homes. Located at 14 Mile Road and Evergreen in Beverly Hills, Greenwich Green is another typical example of how DM & R provides financial support and comprehensive mortgage service to both builders and buyers in this area.

250 MARTIN STREET
BIRMINGHAM, MICHIGAN

OFFICES IN DETROIT AND GRAND RAPIDS

DETROIT MORTGAGE & REALTY CO.

DM & R is never very far... just dial MI 7-2277



DETROIT EDISON GUARANTEES ELECTRIC WATER HEATER SATISFACTION

Or Your Money Back Buy the flameless electric water heater that fits your home. Call on it for shower after shower, for wash after wash, for all the hot water you need. If, any time within a year, you're not satisfied with your heater's performance, call us. We'll remove it and return the full purchase price, including any installation cost!

Other exclusive electric water heater advantages:

- Long life—no hot spots
- Install anywhere—no flue needed
- Free Edison service for electric operating parts when manufacturer's warranty runs out.

162,000 of your neighbors throughout S. E. Michigan enjoy the benefits of electric water heating. You can join them by shopping for your new flameless heater where you see the H₂O emblem—the symbol of an electric water heater retailer.

