



KEEP AN EYE OPEN FOR BB BIRMINGHAM BONUS DAYS

FEB. 22, 23, 24

Chrysler's New Showroom Opens

Birmingham Chrysler-Plymouth Inc. officially opened their doors for business this week. The new auto agency, at 912 S. Woodward, will handle Imperial, Chrysler, Plymouth, and Valiant automobiles. Veteran auto dealer, Paul Herpolzheimer, Jr. is the president and general manager of the firm. Son, Paul, will serve as general sales manager. The elder Herpolzheimer has been associated with the Chrysler Corp. for over 23 years. A subscription to The Eccentric brings you the community's top news events 52 times a year.



Snow Family

CRANBROOK VILLAGE—Girl Scout Troop 980 really worked on a recent weekend spent at Camp Narin. The girls made a snow family complete with a parakeet on the young snow fellow's shoulder and an over-sized dog at his side. Shown with their creations are Margaret Bomarito, Linda Triplett, Mary Zimmerman, Sue Corziant, Nancy Yardly, Diane Hendershot, Sally Bristol and Barbara Weiss. The girls are all seventh graders at Groves.

Franklin Village Great Books Club Plans Open House

The Franklin Village Great Books Discussion Group invites all adult residents of the area and surrounding communities to attend their open house Tuesday. "The conscious and sub-conscious are these two separate systems of the mind within each of us?" will be the debate as Great Books Discussion Group participants grapple with the "Origin and Development of Psychoanalysis" by Sigmund Freud.

Renfrew, Ingraham Seek Nomination

City Commissioners Charles Renfrew and Carl F. Ingraham submitted nominating petitions Monday for the April 2 city election. So far, the two incumbents are the only candidates to file. Resides the two commission posts, two library seats are up for election. One ballot proposition also will be up for decision by the voters. Deadline for filing nominating petitions is 4 p.m. Saturday, Feb. 24, in the city clerk's office. If you are buying, selling, renting or swapping, The Birmingham Eccentric Classified Ads will do an outstanding job for you.

A MORTGAGE IS THE FOUNDATION . . . of Most Homes

BUT IT COULD BE A NIGHTMARE FOR HER!

WITHOUT A MORTGAGE, the average family would never own a home of its own. But when a mortgage becomes the sole responsibility of a widow, the result can be tragic—can drain her income and cause her countless worry.

LET US SEND YOU information on how little it costs to provide insurance that will pay off the remainder due on your mortgage if the unexpected happens to you.

Send Coupon or Phone Today — Don't Delay

Redpath & Sutter & Associates
803 South Adams — Birmingham, Mich.
Phone 647-3415

Name _____ Age _____
Address _____ Phone _____

SPECIAL WEEK THIS SAVE HERE

WINTER SEAL COMBINATION DOORS
(Complete with WARTIAN hardware, Kingsley hydraulic closer, spring safety windbreak chain, 1/2" vinyl sweep, 2 class and upper screen inserts).

ECONOMY Reg. \$29.95 **\$29.95** DELUXE Reg. \$39.95 **\$34.95**

DELUXE ANODIZED Reg. \$44.95 **\$39.95** Deluxe White Enamel Reg. \$49.95 **\$44.95**

Installation \$10 extra

DONDERO SASH & SCREEN

1523 N. MAIN, ROYAL OAK LI 5-0600

South of 12-Mile • Open Mon. Thru Fri., 8 to 5:30—Sat., Till 3:30

Wondering what the weather will be like today? It's all settled—the weather will be "unsettled." At any rate, that's what Birmingham "weather man" is predicting. Edward J. Pintar, 22400 Hillview Lane, who is safely out of reach in Florida where he usually spends the winter. Judging from his predictions, the south is just the place to be for his forecasted rains, "stormy" floods" for Saturday and Monday and "could snow" for Wednesday.

Rain or Shine—His Report Is In

By IRMA N. DAVIS Staff Writer

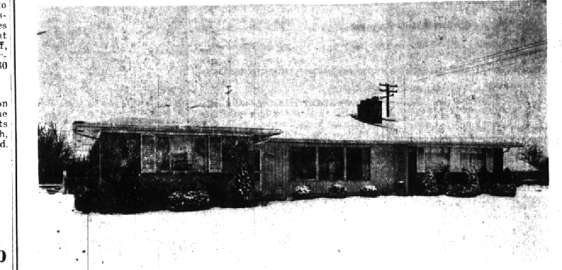
AND TO LOOK as far ahead as Easter, the weather will be "miserable" May.

That won't matter. Everyone will have their best flurries on anyway.

THE GREAT Books Discussion Group meets every other week and discusses a new reading at each meeting. No special educational background is required. There is no tuition. To attend the open house or to join one of the Great Books Discussion Groups, contact Mrs. James Worley, coordinator of the Great Books Program, 2435 Fernhill, Royal Oak or Mrs. Richard Bernard, secretary of the group, 26580 Wellington, Franklin.

THE GREAT Books Discussion Group is being sponsored by the Franklin Public Library and meets at the Franklin Community Church, where the open house will be held.


VACANT-OUT OF TOWN OWNER-MUST SELL



OPEN FOR INSPECTION 4:00 - 9:00 P.M. THURSDAY, FRIDAY, SATURDAY

You'll find this lovely three bedroom ranch at 17537 Kinross in Beverly Hills, one block east of Southfield, between 13 and 14 Mile Roads. All rooms including family room are large and carpeted with two well-appointed baths and a G.E. full appliances kitchen. The basement is completely tiled with half bath and well organized storage. Combination stone, brick and wood, plus large corner lot all blend into a delightful architect's rendering. Take your broker along if you wish. Trades will be considered!

A.L. DOENGES CO. Realtors



JO 6-6372 4084 W. Maple MI 6-1600

Lel A. L. DOENGES Co. Be YOUR REALTOR

Night

(Continued from 1-E)

communication. Tickets for coming events are peddled between frames. Important announcements receive careful attention as the grapevine operates from team to team comfortably encouraged on well-upholstered couches. At election time, petitions get filled with grace and ease. Beats pushing doorbells, every time. And, what a boon it is to the newcomer who bows. Here, sooner than anywhere else, is the kindred spirit kindled. As the 46 team work in intimate little clusters, friendships flourish despite fluctuating averages.

Helin Presents Variety Film for High Twelve Club

Charles Helin, president of Helin Tackle Co., Detroit, a nationally known world traveler, and hobby photographer, appeared at the Birmingham High Twelve Club meeting Monday night with a premiere presentation of "The Family Reunion." Helin compiled the film from movies that he has taken of his travels and the people he has met in the past 20 years. It includes such personalities as Gar Wood and Dr. Edward Kellogg. He owns several planes which he uses for his travels and photography. High Twelve meets at the Community House.

PINTAR OPENED his home weather station in 1957. He bases his reports on books, astronomical charts and a study of all the known planets and the zodiac. The system which he has developed, costing \$200 is 85 per cent accurate. Pintar says, in Minnograph form, four pages long, forecasts not only cover the weather but include gardening and fishing guides. Also provided is a summary of weather for each month of the year and an explanation of the symbols devised by Pintar to explain the phases of the moon or the best time to go digging for night crawlers.

Young Republicans Hear Lyle Feb. 20

THE YOUNG REPUBLICANS and more are one. Only a few are intent on the skill of the game, though spirits rise and fall with the pin. Most admit they join the Tuesday exodus from town because it's fun. Aching muscles notwithstanding. Among them you'll find the most energetic members of the community. But interspersed in the group are the timid retiring ones too. Somehow, here on Tuesday night, things are equalized. Late in the evening, in the gross span of the bowling lanes, a common denominator is found that supercedes age differences, church affiliation, income brackets and temperaments. They all have a lot on the ball.

BE SHARP GET SMART!

Now is a time when you and we are not too busy to think of your gardening tools and equipment, and their present condition. We think your tools and equipment need our attention now—before you start using and cussing 'em.

WE WILL BE GLAD TO: SHARPEN PRUNNING SHEARS & LOPPING SHEARS. SHARPEN SHOVELS, HOES & EDGING TOOLS. CLEAN, ADJUST AND REPAIR FERTILIZER SPREADERS, TANK SPRAYERS, LAWN SPRINKLERS, HOSES, ETC. (with a few exceptions). WE CANNOT HANDLE POWER EQUIPMENT or SAWS. WE WILL PICK UP & DELIVER IN OUR DELIVERY AREA. CALL MIDWEST 4-4133

JIMBO JUMBO PEANUTS have been unable to withstand the worldwide depressive trend of prices. On the Big Board they are still \$2.25, but on the market they are less than "Virginia Fancy"—\$1.50 for 3 lbs. (No shells either).

CALPECO PECANS have suffered the same fate: Big Board, \$2.50 — Current Market, \$1.50

THOUGH OFF to a poor start, 1962 will still be a fairly good weather year, Pintar believes. There will be sun for picnics, rain for farmers and "brides will smile," come June. But first, weather-minded or not—there's rugged weather ahead for the balance of February and one may as well face March's entry with resignation. It will come in with a traditional lion's roar. "A nice spring month"—April.

Charles L. Lyle, chairman of the Republican Committee of Oakland County, will speak on "Oakland County Republican Organization and Plans for the Coming Year."

The glad hand, never has a check in it.

McCLELLAN-BALL CO.

EVERYTHING FOR THE YARD AND GARDEN

Phone MI 4-4133
850 S. Woodward, Birmingham, Michigan

your family need never enter a dark house again... WHEN time-all.™ TURNS A LIGHT "ON" TO WELCOME THEM SAFELY HOME!

TIME-ALL will automatically turn a light "ON" to "welcome" you every evening... come home to a bright, friendly house without fear of darkness lurking in the darkness. TIME-ALL works after night without resetting. No special wiring needed—just plug-in. See it today!

Don't come home to a dark house again. Pick-up a TIME-ALL TODAY... HAVE A FRIENDLY "WELCOME HOME LIGHT ON" TOMORROW! \$10.95

Huston Is Your Headquarters for CHEMEX Coffee-makers and Filter Paper.

HUSTON HARDWARE CO.

SEWING BIRMINGHAM OVER 50 YEARS

205 N. WOODWARD MI 4-7330

Daily Delivery Service
OPEN FRIDAY EVENINGS
CLOSED ON SUNDAY

VALUES GALORE AT ERB-RESTRICK'S during FEBRUARY

PLYWOOD

INTERIOR FIR 1/4" - 4 x 8' Good 1 side \$2.88

EXTERIOR FIR 1/4" - 4 x 8' Good 1 Side \$3.35

INTERIOR 3/4" - 4x8' Good One Side 4.50
1/2" - 4x8' Good One Side 5.85
3/4" - 4x8' Good One Side 6.65
1/2" - 4x8' Good One Side 7.88

EXTERIOR 3/4" - 4x8' Good One Side 4.85
1/2" - 4x8' Good One Side 6.40
3/4" - 4x8' Good One Side 7.35
1/2" - 4x8' Good One Side 8.60

CUPBOARD DOOR STOCK
FIR 3/4" - 4x8' . 8.95
BIRCH 3/4" - 4x8' . 14.95
WHITE PINE 3/4" - 4x8' . 13.45

ARMSTRONG CEILING TILE
12x12 White 10 1/2¢ sq. ft.

PIONEER BLONDE MAHOAGANY 1/4" - 1x8' V-Grooved Pre-Finished \$6.95

UNFINISHED MAHOAGANY PANELING 1/4" - 1x8' V-Grooved \$4.44

SALOON TYPE DOORS

WHITE PINE 30" x 48" 32" x 48" 36" x 48"

\$10.95 PAIR

LOUVER DOORS

WHITE PINE—1 1/2" THICK


12" x 80"\$5.25
15" x 80" 5.65
18" x 80" 5.95

3/16" - 1x7" Slight End Damage \$5.95

Pre-Finished Natural MAHOAGANY 1/4" - 1x8' V-Grooved \$5.95

PIONEER SANDALWOOD MAHOAGANY 1/4" - 1x8' V-Grooved \$6.65

designed to save your time and energy!



Let Erb-Restrict design your new kitchen with the all new PEERLESS CABINETS. Contemporary or Colonial, we have the kitchen for you. Stop in and see them on display now. Easy terms. Up to 5 years to pay.

SHELVING

1x12

12¢ Lin. Ft.

Pre-Finished BIRCH PANELING 3/16" - 1x7" Slight End Damage \$5.95

Pre-Finished Natural MAHOAGANY 1/4" - 1x8' V-Grooved \$5.95

PIONEER SANDALWOOD MAHOAGANY 1/4" - 1x8' V-Grooved \$6.65

INSULATION

Popular 8 Ft. Blanket (Paper enclosed)

1 1/2" Thick, 100 Sq. Ft.\$3.69
2" Semi-Thick, 80 Sq. Ft.\$3.88
3" Full Thick, 50 Sq. Ft.\$3.19

ALUMINUM FOIL ONE SIDE

2" Semi-Thick, 80 Sq. Ft.\$5.15
3" Full Thick, 50 Sq. Ft.\$3.99

ALUMINUM FOIL TWO SIDES

2" Semi-Thick, 80 Sq. Ft.\$6.45
3" Full-Thick, 50 Sq. Ft.\$4.77

SHEET ROCK

3/4" - 4x8' \$1.49

2x4's - 8 Ft. NO. 2 SPRUCE

\$59¢ Ea.

ERB-RESTRICK Lumber Company

2 COMPLETE HOME MODERNIZATION CENTERS

OPEN DAILY 7:30 - 5:30 FRIDAY 7:30 - 5:00 SATURDAY

HOME OF THE HOUSE DOCTOR

803 SO. MAIN, ROYAL OAK LI 8-4000

425 ETON RD., BIRMINGHAM MI 4-5300