

### Child Clinic Asks County For \$67,000

adopt a "wait-and-see" policy until the state legislature determines what it will do about mental health. Two measures are before the current legislature which would make counties co-partners with the state in a mental health program.

IF THE COUNTY is to provide the \$67,000, the committee feels the county should have some control over the clinic, perhaps by placing it under the health department or in mental health if one of the state bills is adopted.

Oakland County Child Guidance Clinic has asked the board of supervisors' Ways and Means Committee for \$67,000 for its 1962 operating budget.

The total proposed budget amounts to \$199,923.

David Levinson, Birmingham supervisor who is chairman of the ways and means unit, said the committee has discussed the clinic's proposed budget but will make no decision at this time.

Levinson said the committee will pay.

Levinson said any steps the county now takes to assure continued operation of the clinic must be on a temporary basis.

He questioned a surplus item of \$9,156 in the clinic's proposal and said it would have to adjust fees according to ability of patients to pay.



### A Colossus

Rory Calhoun and Italian actress Lea Massari head a large international cast in Metro-Goldwyn Mayer's new spectacular, "The Colossus of Rhodes," which started Feb. 7 at the Bloomfield Theater in Birmingham. A Franco-Italian-Spanish production, the movie was filmed in Cinemascope and color. It depicts the conflict between the people of Rhodes and invading Phoenicians.

Birmingham Store Open Friday Till 9 P.M.  
Detroit Till 8:45 P.M.  
Phone MI 7-2000

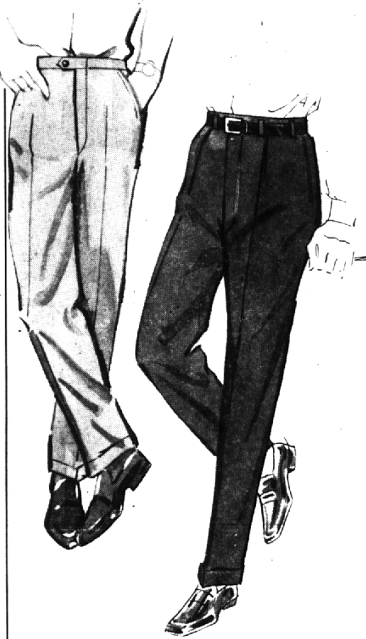
### Famous-Label Apparel for Men and Boys



Demery's Exclusively - Famous "Customcrafter" Suits 69<sup>95</sup>

A way of life . . . this "Customcrafter" all wool single pant suit with the tradition of fine tailoring, authentic detailing and skillful cut, made for comfort in action. It has universal good looks with conventional three button styling for that feeling of ease and assurance that comes with knowing you're well dressed. Grey or brown herringbone. Sizes 36-46 regular, short, long and portly.

Men's Clothing—First Level

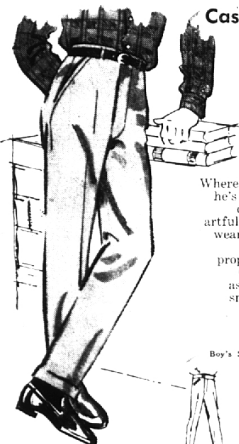


Selector of Famous Maker Men's Slacks 14.95 - 22.50

For relaxing, playing, working, we have the slacks that will give the easy comfort, long service. Choose from a complete selection of blends and all wool worsted in smart muted shades . . . they'll go with almost anything in your closet . . . and you'll go for their relaxed classic good looks. Sizes 30-42 regular, short and longs.

Men's Sportswear—First Level

Reg. 3.98-4.98 Boy's Proportioned Cotton Casual Slacks 2.99



Wherever junior goes, he's always smartly dressed in these artfully tailored, long wearing and rugged polished cotton proportioned slacks. Choose from an assorted group of smart new colors. Regular 6-12, slim 6-18, husky, 6-18.



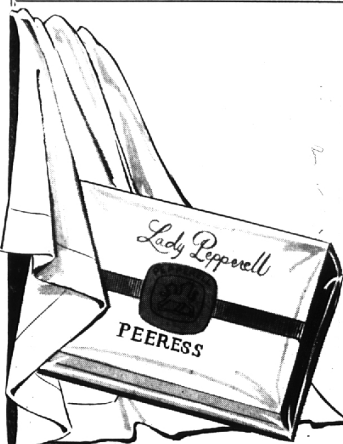
Save as You Spend with *Green Stamps*

1/3 OFF SALE! on Men's Sweaters



Famous make sweater classics in all shapes and colors . . . all at a special 1/3 OFF! In smart pullover and coat styles, solid or brightly patterned in a variety of fabrics. Mixed or matched they're a set a man can wear in any combination to achieve that elegant yet carefree look. Broken sizes.

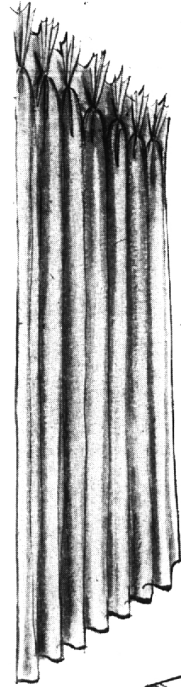
Men's Furnishings—Main Level



### 200-count Luxury "Peeress" Lady Pepperell White Sheets

- of fine pima and combed cotton yarns
- Reg. 3.98, 72X108" . . . . . 2.98
  - Reg. 4.98, 81X108" Sheet . . . . . 3.79
  - Reg. 3.98, Twin Fitted Sheet . . . . . 2.98
  - Reg. 4.98, Double Fitted Sheet . . . . . 3.79
  - Reg. 10.95, King Size 122 1/2" Sheet . . . . . 7.95
  - Reg. 10.95, King Fitted Sheet . . . . . 7.95
  - Reg. 1.39, 42X38 1/2" Cases . . . . . Ea. 99¢
  - Reg. 1.49, 45X38 1/2" Cases . . . . . Ea. 1.09

Sheet news: The "count" and the content make the difference . . . a new luxury softness, delicious smoothness, longer wear. Little wonder, for these sheets are a blend of fine 25% Pima cotton and superior quality 75% combed cotton with 200 and more threads per square inch. You'll love them.

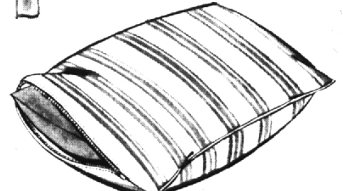


### CHROM-SPUN\* DRAPERIES

Half Price Sale!

- Machine Washable
- Reg. 3.99 Pr., 48 x 36" . . . . . 1.99 Pr.
  - Reg. 5.99 Pr., 48 x 45" . . . . . 2.99 Pr.
  - Reg. 7.99 Pr., 48 x 63" . . . . . 3.99 Pr.
  - Reg. 9.99 Pr., 48 x 84" . . . . . 4.99 Pr.
  - Reg. 9.99 Pr., 72 x 36" . . . . . 4.99 Pr.
  - Reg. 11.99 Pr., 72 x 45" . . . . . 5.99 Pr.
  - Reg. 13.99 Pr., 72 x 63" . . . . . 6.99 Pr.
  - Reg. 15.99 Pr., 72 x 84" . . . . . 7.99 Pr.
  - Reg. 19.99 Pr., 96 x 63" . . . . . 9.99 Pr.
  - Reg. 23.99 Pr., 96 x 84" . . . . . 11.99 Pr.
  - Reg. 31.99 Pr., 144 x 63" . . . . . 15.99 Pr.
  - Reg. 39.99 Pr., 144 x 84" . . . . . 19.99 Pr.

Now you can have new draperies at amazingly low prices! In luxurious washable chrom-spun\* acetate, they will brighten up every room. Available in white only.



Regularly, 14.95 each . . . Wonderfully luxurious "Sahara" imported king size 22x28" white down pillows covered in smart blue white or pink white candy stripe ticking, with zippered cover for easier care.

2 for 19.77

Save as You Spend with *Green Stamps*

Birmingham Store Open Friday Till 9 P.M.  
Detroit Open Till 8:45 P.M.  
Phone MI 7-2000

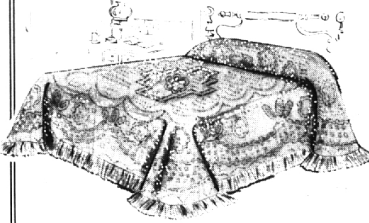
### Special Values, Special Savings On Items for Your Home!



### IMPORTED IRISH LINEN DOUBLE DAMASK CLOTHS and NAPKINS

- Reg. 14.95 Cloth, 70 x 88" . . . . . 10.95
- Reg. 17.95 Cloth, 70 x 106" . . . . . 13.95
- Reg. 20.95 Cloth, 70 x 124" . . . . . 16.95
- Reg. 22.95 Cloth, 70 x 142" . . . . . 18.95
- Reg. 19.95 Dozen, 22 x 22" Napkins . . . . . 13.95

Exquisite double damask, hand-hemmed cloths in Chrysanthemum or rose patterns on fine white linen.



### Reg. 14.98 "Columbia" HEIRLOOM-TYPE SPREAD

81 x 110" or 96 x 110" 12.98

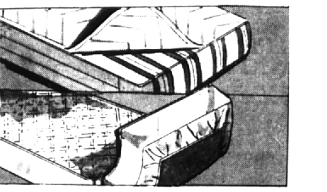
Pre-shrunk heavy cotton reversible spread combines Early American elegance with easy care manners. Designed with billion fringe and rounded corners . . . machine washable. White, Antique white.

### SERTA-POSTURE MATTRESS or BOX SPRINGS

39.75 ea.



- Available in full or twin size with matching box spring, at the same wonderful low, low price.
- Authentic posture features! The extra levelizing layer keeps the spine in line.
  - Heavy duty covering . . . with smooth, tuftless top, for special sleeping comfort.
  - The same low price as advertised in LIFE in 1956!



### SAVE! COTTON FLAT AND FITTED MATTRESS PADS

- Reg. 4.49 Twin Flat with Anchor Band . . . . . 3.99
- Reg. 5.99 Full Flat with Anchor Band . . . . . 4.99
- Reg. 5.99 Twin Combination 2-in-1 Cover . . . . . 4.99
- Reg. 6.99 Full Comb. 2-in-1 Pad-Cover . . . . . 5.99

Add longer life to your mattress with sturdy pads of extra-strong 100% bleached cotton percale, filled with pure white 50% dacron\*\* polyester 50% cotton.

Save as You Spend with *Green Stamps*