

### Pulpwood Tree Is Worth \$35

About 11 million trees of stove-pipe size were cut for pulpwood in Michigan last year and each tree cut generated more than \$35 in income to the state by the time it was processed into paper and paperboard products, according to Ray Pfeifer of the Michigan Department of Conservation.

That adds up to a whopping \$400,000,000 income for the state from pulpwood alone, says Pfeifer. "But," he adds, "new forest growth added over two and one-half times as much as was used during the year. This is why forests are called a renewable resource." Pfeifer, a forester, has been engaged in inventorying Michigan forests.

It is not true that tigers dwell only in jungles of the tropics. There is rather a large population of tigers—rather a large population of rather large tigers, in fact—as far north as Siberia. Even their smaller cousins are highly adaptable to different surroundings. Tigers have the ability to live in swamps, in reeds, in grasses, and also in and around caves and rocks.

### Power Struggles Blamed For Teaching Turnover

Authority and power struggles in American educational systems are frequently to blame for such ills as "teacher turnover," discharge and arbitrary termination of contracts, low productivity and highly publicized resignations, says Gale Jensen, University of Michigan professor of education.

"These power struggles develop mostly in connection with an organization's decision-making," Jensen says.

The U.-I. educator names six sets of conditions which create the authority struggles which show up in the everyday behavior of employees.

FIRST CULPRIT is nonpublic decision-making, says Jensen.

"Under these conditions, only a few persons know how any particular decision was made. Personnel tend to grow suspicious and non-communicative if they are adversely affected. It's as though some invisible hand were at work directing their lives. And if the decisions result in bad conditions, the personnel also becomes apathetic and resentful."

Bad decisions about goals was also blamed for producing power struggles.

"Loyal opposition" groups spring up determined to take action "before it is too late." A great deal of personnel energy is given to criticizing decisions that have been made and to expressing concern for the welfare of the organization.

POWER STRUGGLES are also caused by persons using organizational resources as patronage to build personal power, says Jensen. Situations like this are common to organizations and are watched carefully by all personnel. When they are present, off-hand remarks about the "guilty party" are made to call attention to what is happening.

Another set of conditions has to do with differences between personnel with respect to what the proper objectives of the educational system should be.

"The struggles here usually take the form of scuffles between 'humanities,' the 'arts,' 'science,' 'practical arts' teachers, and administrators."

"Candidates for administrative posts are scrutinized for their values and attitudes toward educational problems and organization more than for their actual competencies for performing the job well."

STRUGGLES ARE also created when some outside organization which holds "police power" continually demands an accounting of what the organization is doing, says Jensen.

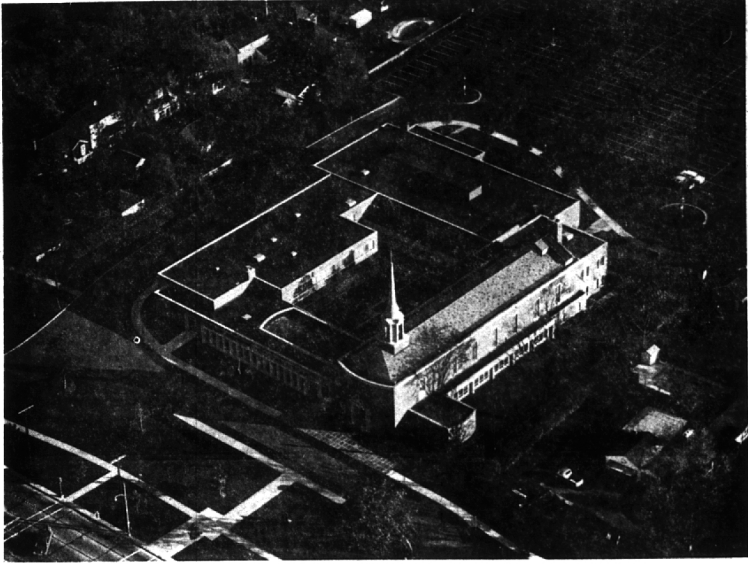
"Under these conditions, the educational system has a tendency to employ personnel who are unable to contribute to the instructional work but who are skillful in keeping the 'enemy at bay.' To personnel who conduct the basic work of the system, the newcomers appear to be meddlers and bureaucratic nuisances."

LAST JENSEN cites "the failure of personnel in 'authority roles' to get the decisions needed by the educational system. When this condition becomes chronic, personnel become apathetic and are likely to

Chain Saws Cost 55 Cents a Cord

Chain saws cost about 55 cents a cord to operate, according to a recent study. Costs tabulated on three logging jobs, totaling 6,705 cords of oak and aspen, took into consideration the cost of the saws, trade-in allowance, sales tax, files, chains, gauges, oil, gasoline, repairs and parts.

About 15 cents per cord was spent for gasoline, according to the Pennsylvania State College study, which approximated Michigan woods conditions.



**Aerial View Shows First Presbyterian**

The First Presbyterian Church of Birmingham was originally organized in 1834 as the "Presbyterian Society of Birmingham" and met in a barn out Woodward. Today it is located on a six and one-half acre site on W. Maple Road, between Pleasant and Larchlea. Ground was broken for a \$1,285,000 church, fourth building to be occupied by the congregation, at a special Mother's Day program in 1952, and the new edifice was formally dedicated Nov. 7, 1954. A new education building and cloister were dedicated in 1960. This photo was taken especially for The Eccentric by pilot-photographer Sid Coale.

**PEOPLE'S COLUMN**

### Thanks for Mailman; He's Always There

To the Editor:

As I look out my window and see the blizzard, ice and snow, I'm so thankful for our mailman.

In this world of "tipping" sometimes for services not so favorably rendered, I wonder if we can remember "our mailman" with a goodly tip.

He is ever so faithful. Snow, ice, heat, rain—no matter what, we all look for him daily and he is there to serve us faithfully.

WE ALSO know that his job, but we're sure he'll never become a millionaire at it. I happened to work in the P.O. one Christmas-time and their wives were there working and thankful for the opportunity of extra money.

You see, a mailman never works overtime to get that time-and-a-half or double-time pay—just regular monthly salary is what keeps him going.

MRS. DEE

### Dogged Determination Points Way to Victory

Some faces were red . . . and they didn't all belong to humans, either.

In fact, you might call it the Horatio Alger story of dogdom.

The cream of Birmingham's canine crop had gathered to vie for honors at the Southeastern Michigan Obedience Training Club event, staged at Bloomfield Hills High School.

There were poodles, pointers, schnauzers, great Pyrenees, shepherds, Afghans . . . and a little mongrel named Peggy.

If you had jumped ahead of the story and predicted a victory for Peggy—you're right.

THE LITTLE female—you could hardly call her a lady—hosted some 60 other dogs in heeling, sitting, lying down and obeying in her 8 p.m. class. She scored 196 1/2 points of a possible 200.

This satisfying victory qualifies her for the fun trials by the club in Royal Oak on Jan. 13. Peggy's ancestry? Questionable.

Her master, Lloyd H. Strausz, 6386 Northfield, Birmingham, picked her up from the Pontiac animal shelter for \$10.

### Social Security Rates Increase In January, 63

William E. LaRock, Social Security district manager at Pontiac, issued a reminder today about the scheduled increases in Social Security tax rates, beginning in January.

The new rate, for both the worker and the employer, will be 3% per cent representing an increase of one-half of one per cent each. The self-employed will pay a Social Security tax of 6 1/2 per cent of their net earnings in 1963.

This means that the person who works as an employee will pay 50 cents more on each \$100 of earnings up to the top taxable earnings of \$4,800. The same amount will be paid by his employer.

FOR THE self-employed, the increase will amount to 79 cents more on each \$100 of taxable earnings up to the maximum of \$4,800. LaRock explained that the number of people who receive Social Security benefits will continue to increase year after year. The population is growing and at the same time so are the numbers of people working under Social Security who will be eligible for benefits in the future.

TO COVER the cost of paying benefits to this increasing number of people, the law provides for gradual increases in the Social Security tax rates.

The last tax raise is scheduled to go into effect in Jan., 1968. The 1963 increase, along with those which will take effect in 1966 and 1968, is designed to provide ample funds for keeping the Social Security system self-supporting.

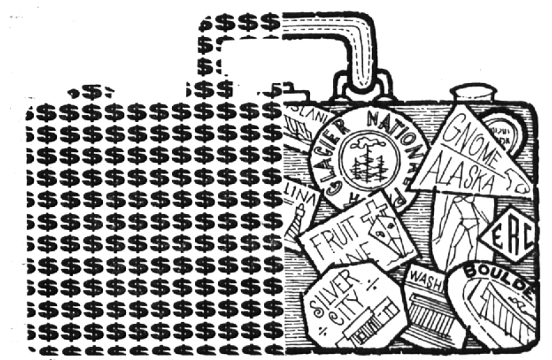
Mohawk—Wool—"O"—Bigelow

**Edw. Jones**  
Floor Coverings

COLOR CHOICE  
or  
COLORFUL VALUES

1200 Shades  
1700 Shades

281 Hamilton Row  
Birmingham MI 4-1183  
Borwick - Magee



(tempted to travel?)

### GET THE MONEY HERE

Florida, maybe? Or a trip to a nearby resort? If it's the money that's holding you back, take a short trip to the nearest office of Detroit Bank & Trust. It's the quickest way to get going. We'll get you the money fast and you borrow at low bank rates. That's the kind of service that goes with all loans at Detroit Bank & Trust.

the Most Experienced Bank in town

**DETROIT BANK & TRUST**

Woodward-Hamilton • Woodward-14 Mile • Wabash Bldg.  
Woodward-Oakland Drive-In Office

# ANNOUNCING

## The Opening of The Village Belicatessen

Friday, Dec. 28th at  
377 Hamilton Row  
(East of Demery's)  
MI 7-2113

TABLE SERVICE—CARRY-OUTS /  
Offering the same high level of service as in our former location on W. Maple.  
NEW, LARGER QUARTERS TO BETTER SERVE YOU!



ORDER YOUR NEW YEAR'S PARTY TRAYS NOW! WE DELIVER!

WE SPECIALIZE IN KOSHER CHAIN CORNED BEEF  
Take home our delicious home-made soups and salads  
OPEN SEVEN DAYS A WEEK - 7 a.m. to 1 a.m.  
MI 7-2113 WE DELIVER  
YOUR HOST: HARRY SINGER

**BIRMINGHAM**  
Birmingham, Mich. - Midwest 4-3533 - A United Detroit Theatre

NOW SHOWING

Walt Disney's happiest motion picture  
**Lady and the Tramp**

TECHNICOLOR

Walt Disney's BEST motion picture  
**Almost Angels**

Coming December 30th  
"It's Only Money"—Jerry Lewis  
Plus "Marco Polo"—Rory Calhoun

**BLOOMFIELD**  
Birmingham • Midwest 4-6006 • A United Detroit Theatre

ELVIS PRESLEY  
Girls! Girls! Girls!

Plus 2nd Big Hit  
"THE WAR LOVER"  
Steve McQueen - Robert Wagner

CHILDREN'S MATINEE SATURDAY  
"BATTLE IN OUTER SPACE"  
"THE MAGIC SWORD"—CARTOON  
STARTS 1:30 P.M. OUT AT 4:00 P.M.

BIG NEW YEAR'S EVE MATINEE MONDAY  
A-L-I-V-E ON STAGE  
"GARGANTUA THE GIANT GORILLA"  
PLUS A BLOOD CURDLING FEATURE  
FREE HATS AND NOISEMAKERS  
FREE BRACELETS TO FIRST 100 GIRLS  
STARTS 1 P.M.—DON'T MISS IT!