

Potpourri

by JULIE CANDLER
Special Writer



The Birmingham Area may soon become the headquarters of one of the nation's few listener-supported, commercial-free FM radio stations devoted to classical music, drama, opera, lectures, poetry readings and other good listening of the variety.

Dick Hughes, owner and operator of radio station WQRS, hopes to trade frequencies and operating facilities with WHFI, the FM station formerly operated by Birmingham resident Gar Meadowcroft. The switch would bring WQRS from its present headquarters in Detroit's cultural center to the Troy transmitting facilities of WHFI.

FOR A SAMPLE of what we may be getting out here in our home town, I suggest you tune to 105.1 on your FM dial. Dick and his volunteer staff present a stimulating three-and-a-half hour show called "Outlook" and repeat it four times each day.

Hard-working Dick Hughes is an Indian Village

resident and father of two girls. He started WQRS nearly three years ago, determined to bring programming of a cultural and intellectual nature to the Detroit community. He has stuck to his ideal through thick stacks of bills and thin pocketbooks.

LAST MAY he announced the station would become listener-supported, and offered subscriptions at \$12 per fast enough to support the operation. Dick is now \$5,000 in the red and is presently conducting a drive to get his station back on its financial feet for the hike to suburbia.

THERE'S GOING to be another little apprentice out at Will-O-Way Apprentice Theatre in Bloomfield Hills. Director Celia Merrill Turner and her husband, Ken, expect him or her, their fourth, to make an entrance about Feb. 1.

Celia and Ken say they're too busy to mail Christmas cards. As their Christmas card to the community, they're presenting their traditional Will-O-Way performances of "The Broken Doll," a favorite with children and adults.

You can take your kids or your Cub Scouts to see it, free of charge, at 1, 3 and 5 p.m. Saturday and Sunday, by calling the theater for a reservation.

Celia Merrill Turner presents a daily chat about "Players and Players" on the WQRS program "Outlook." It's newsy and interesting.

Piano Teacher Wins Top Contest Prize In Hotel Naming

A Birmingham woman, Mrs. Janet W. Martin of 528 W. Frank, has won first prize, a 1963 Buick Skylark convertible and \$1,000, in a contest to name a new \$11,000,000

Detroit hotel.

Mrs. Martin, a 45-year-old piano teacher, wrote the winning 25-word essay to accompany the chosen name, Pontchartrain, which was submitted by about 10 per cent of the 100,000 entrants in the Central Business District Association sponsored competition.

Another prize-winner from Birmingham is Judith H. Preston of 621 Graefield Court, in fifth place, who was awarded a Hamilton gas dryer.

The Birmingham Eccentric Classified pages offer you a fine opportunity to sell your unwanted household goods.

MARK WESSEL
Pianist • Composer • Teacher
Studio at 815 Old Indian Trail,
Orchard Lake
Phone 682-1452

Try Using Filters For Winter Photos

By BILL THOM
Staff Photographer

Winter's come with its drifting snows, icicles hanging from the eaves, stark trees against leaden skies.

No doubt many of you have marveled at photographs you've seen with the snow's endless textures and shapes, while the most you've been able to achieve so far are pure white areas with occasional black trees.

There are tricks to photographing snow scenes, some of which I'll present here.

PERHAPS THE one most important item in snow photography is a filter such as the K2 which is a medium yellow. This will render the texture of the drifts visible as well as revealing some detail in darker objects. That's for black and white films; of course, it will render medium yellow pictures in color. Don't forget that an increase in exposure is necessary whenever any filter is used—one stop, or twice the time for the filter mentioned.

Speaking of exposure, one has to be careful not to overexpose a snow scene. The light ratio over the entire scene is apt to be much greater than you're used to, sometimes as much as a hundred-to-one between a deep shadow and full lit white snow.

NEEDLESS TO say, few films can encompass a range like this, especially color films for which an ideal range is three-to-one. In cases of high contrast range it is advisable to use a flash for opening up the shadows on faces, if people happen to be the subject of your picture. This way, your subject can face away from the sun, thus eliminating the proverbial squint (until just after the flash at any rate, but after that, so what).

If you notice your color pictures

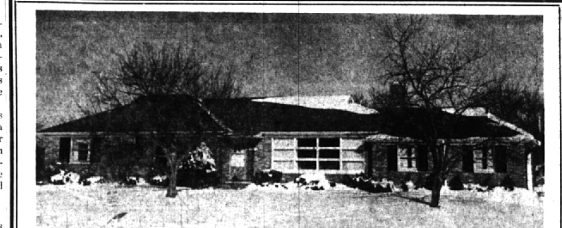
tending toward the blue, which may happen during winter because of increased ultraviolet radiation, you might find a sky light (uv) filter handy which will remedy the situation.

IF YOU FIND your pictures tending toward the yellow, re-read this article.

The uv filter can be left on all the time since it will only help in situations where it may be needed and won't hurt anything when it isn't. No increase in exposure is necessary, either. And don't forget to keep your lens shade on to protect the film from lens flare resulting from the glare often coming from snow.

Make a list of those "don't needs" today. Dial MI 4-1100 and a Classi Last will help you.

Photo Forum



NEW ARRIVAL—Just made available, this rambling brick ranch is spacious throughout and neat as a pin. With FOUR BEDROOMS, 2 full baths plus convenient grade entry lavatory, and full basement, it beckons a large family. Two "red ember" fireplaces, formal dining room, and attached 2 car garage. START YOUR NEW YEAR! \$36,500.

BIRMINGHAM
315 S. Woodward
MI 6-7900

Showcase of homes
HALL & YOUNG INC. REALTORS

BLOOMFIELD
4114 W. Maple
MA 6-5900

LAST MINUTE

SUGGESTIONS to relieve you of tension, hysteria and frustration in the completion of your errands of love. The simple day-to-day things are too much neglected in the effort to find something different for Uncle Ned.

1. SPRINKLE MINDER: A small scientific instrument which instantly shows whether or not a plant needs water or nourishment—\$1.95
2. MEL-O-ROD: A 3 ft. rod, which distributes aerated water from the hose to the plants without wetting the foliage. Simple, adjustable & neat—\$4.95
3. SUDBURY SOIL TEST KIT: Practical kit for determining the fertilizer requirements of any plant—indoor or out—\$3.98 to \$15.95
4. HANDI-CART: Simple two-wheel cart any man, woman or child can handle. It tips forward so trash can be swept into it—\$8.95 & \$10.95
5. 2-QT. WATERING CAN: Bright colors and also some with hand-painted floral designs—All \$3.25 each.
6. PRUNING EQUIPMENT:
 - Hand pruners for men and women. Fine material, excellent design—\$2.65 to \$3.95
 - Lopping shears for both sexes. For heavy, hardwood pruning problems. Designed for tough work with less effort—\$4.25 to \$6.95
7. FLOWER FROGS: A variety of sizes and shapes for all kinds of flower arrangements—10c to \$5.50
8. JR. EXECUTIVE GRILL: A superb compact grill for anyone—with a cooking surface 12" by 16". Rugged, handsome, efficient—\$59.00
9. HAND TROWELS & CULTIVATORS: Shiny, strong tools with fine handles for—79c to \$1.66
10. FIRE COLORS: A box of 12 briquettes, one of which produces lovely colors for 30 to 60 minutes—\$1.89 a Box of 12.
11. WHEELBARROW: Square tray (so it can be stored standing up) well balanced, all metal—\$15.00

STORE HOURS FOR DEC. 26th

—NONE—

WE WILL BE CLOSED ALL DAY

(So we can play with the children's presents)

13. IRON FOOT SCRAPER: Same with brush, some without brush. Take your pick—\$1.95 & \$2.25
14. ELECTRIC FIRE BLOWER: A compact battery operated fan that blows up the log fire, the briquettes in the grill or dries the hair of the poodle or the ah—well—\$4.95 each
15. HOLLY & other GREENS: Lovely Oregon holly loaded with berries and dark green leaves; boxwood cuttings.
16. ROSS ROOT FEEDER: The ultimate in the efficient feeding of tree, shrub and plant roots at any depth. Fertilizer cartridges supply neutral and acid foods, starting and corrective materials. Operates at the end of the hose. \$6.98 each
17. CYCLONE FERTILIZER SPREADER: This is the newest and BEST of the spreading equipment for fertilizers AND seed. \$25.45
18. May we depart from the preceding suggestions? There are also—
 - PACKAGE TIE-ONS
 - RIBBON
 - CHRISTMAS BARGAINS
 - DECORATIVE MATERIALS—½ PRICE
 - ANGEL FIGURES—about ½ retail
19. BIRD FEEDERS: The gift may not be as exciting as the results. Its use can bring the flashing color of the cardinals and blue jays, the meticulous selection of seeds by the chickadee and nuthatch, the horrendous gobbling by the squirrel, the downy and hairy woodpecker, the junco and the sparrows (among which are the charming Song Sparrow and the Chipping, Clay-colored, English, Eastern Fox, Harris', House & Lincoln's Sparrows).

An entire winter (and summer) could enthral a family in identifying the various species of sparrows alone that visit the feeder. This sure to be a project we would suggest that the feed be cracked corn or chicken scratch feed.) There would be other visitors such as cardinals, juncos, etc., but you would have plenty of sparrows to spy on.

20. We have not even mentioned the lovely sun dials, pedestals, fountains, water recirculating pumps, bird baths and garden figures in cast stone, carved stone, lead, and bronze. Let us talk with you about this.

21. Our whole staff, Florence and Jean, Bernie and Dan, Ray and Robert, Paul and Jack and Bill and JMB,

Wish each of you a lovely, peaceful and very Happy CHRISTMAS!

McCLELLAN-BALL CO.
Everything for the Yard and Garden

880 S. WOODWARD, BIRMINGHAM, MICH.
FREE AREA DELIVERY Mid-west 4-4193

FOR THE HOLIDAYS...

MILLER & BROS.
CREAMERY

PEPPERMINT STICK
ICE CREAM



Gracious and Gay!

You'll be especially proud to serve our Peppermint Stick Ice Cream. It's gay! Pink and green peppermint candy bits pop up in every snowy-white spoonful. It's delicately mint-flavored! Made with a world-famous fine mint flavor specially imported from England. Your festivities will be gay with this gayest of ice creams!

MILLER & BROS.
CREAMERY

PEPPERMINT STICK
ICE CREAM

PLUM PUDDING ICE CREAM
also available

CHRISTMAS ICE CREAM

PEPPERMINT STICK or PLUM PUDDING

Snowballs	Yuletide Logs	83c
Box of 4	Nut Rolls	72c
Christmas Trees	Cake Rolls	45c
Box of 6	Christmas Molds	30 ea.
Special Decorated Christmas Slices		12c ea.

Decorated Ice Cream Cakes

Eggnog

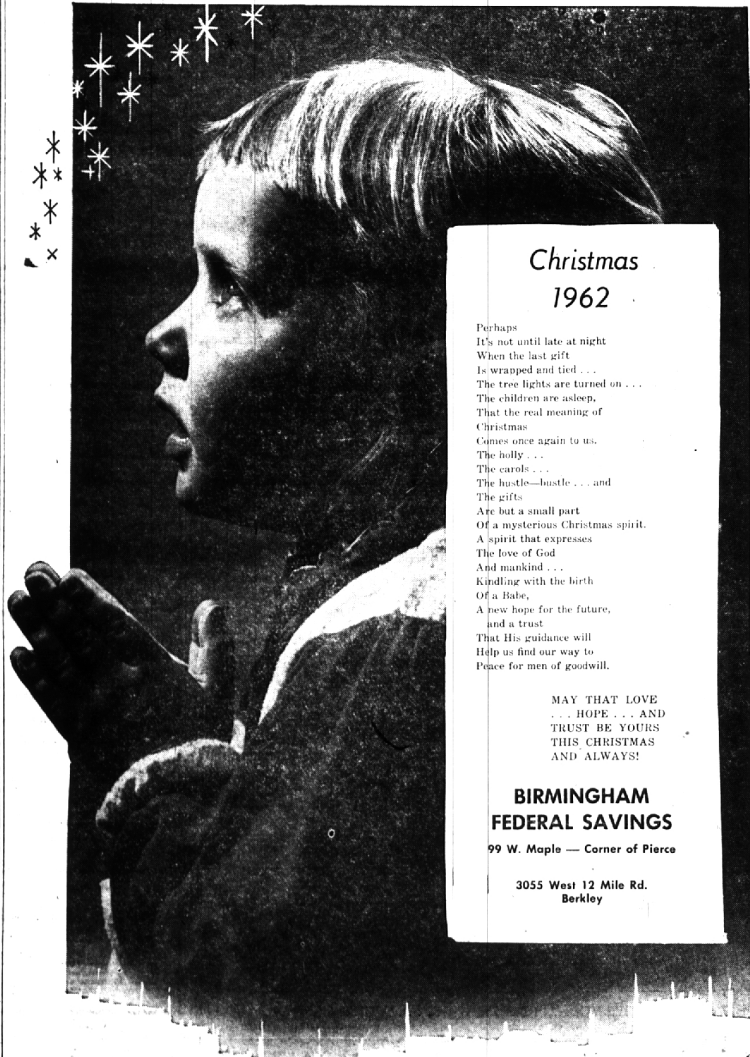
PURE WHIPPING CREAM

Half Pints only 39c

This sale price good through December 31, 1962

For home delivery call Lincoln 9-1344

MILLER & BROS.
CREAMERY



Christmas 1962

Perhaps
It's not until late at night
When the last gift
Is wrapped and tied...
The tree lights are turned on...
The children are asleep,
That the real meaning of
Christmas
Comes once again to us.
The holly...
The carols...
The hustle-hustle... and
The gifts
Are but a small part
Of a mysterious Christmas spirit.
A spirit that expresses
The love of God
And mankind...
Kindling with the birth
Of a babe,
A new hope for the future,
and a trust
That His guidance will
Help us find our way to
Peace for men of goodwill.

MAY THAT LOVE
... HOPE ... AND
TRUST BE YOURS
THIS CHRISTMAS
AND ALWAYS!

**BIRMINGHAM
FEDERAL SAVINGS**

99 W. Maple — Corner of Pierce

3055 West 12 Mile Rd.
Berkley