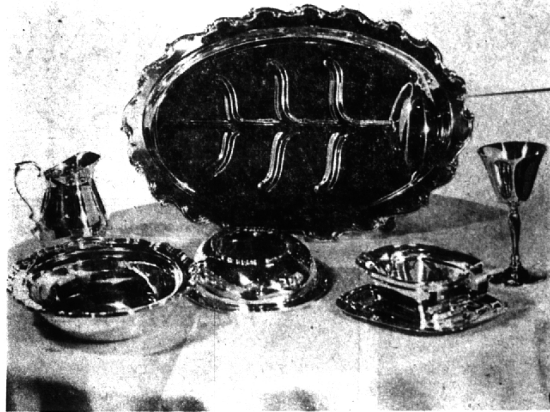




# Give Silver . . .



## For A Lifetime Of Proud Possession

We have the largest selection of nationally famous brands of silver in this area . . . on display now for your Christmas shopping. Tastefully gift wrapped at no charge.

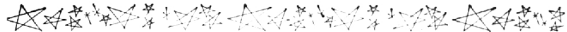
Open Evenings Until Christmas, Except Sat., Dec. 22nd

# Lakes' Jewelers

"The Sterling Store of Birmingham"

Woodward at Maple

MI 45315



## BLOOMFIELD SOUTH

# Mrs. Perkins Gives 'Coffee'

By VELMA McCANE  
MA 6-6530

Despite the temperature and snow, some 60 women attended the traditional Christmas "coffee" at the home of Mrs. Tyler Perkins of S. Clubby in Bloomfield Farms, coming from all directions of Greater Detroit.

In the same week the Tylers were co-chairmen in charge of decorations for the annual party of the Village Players at Players house following a special presentation for the group.

**MEADOWLAKE**  
Mr. and Mrs. J. Richard Halllock and daughter Betty enjoyed an interesting guest over the week end.

The senior class at Groves was doing a unit on all religions and Betty, as chairman of the Buddhist group, invited a Japanese student from the University of Michigan to speak to the class on his religion.

**THE MEADOWLAKE** Women's Bowling League had their annual Christmas party and gift exchange at the Kingsley Inn Monday.

Two members were admitted to the "200" club and presented with a "200" pin. Charlotte Lukon for her 201 game and Barbara Hilliar for 230.

**CRANBROOK-MAPLE**  
On the night of December 26, professional judges will cover the area looking for the most outstanding outdoor Christmas decoration surrounding a home. The winner will be awarded a prize.

This effort is sponsored by the Maplebrook branch of WNFPA and is chairmanned by Mrs. Charles Richards. The theme for this year is "Christmas Scene."

**AN** understandable pride prevails in the John L. Rex, Sr. home on S. Willamsbury.

Son Edward M. is a colonel and deputy commander of the Rocket site at Edwards Air Base at Edwards, Calif.

J. Foster is a commander in the US Navy. He graduated from Annapolis in 1946. Recently he received his aeronautic engineering degree from California Tech and is currently assigned in Hawaii.

Third son John L., Jr. is an engineer for General Motors.

**WESTCHESTER**  
The board members of the Greater Westchester Association met at the home of Ted Simons recently to discuss their goal for the year. Their recommendation for subdivision beautification will

be given to residents in detail in the near future.

Excitement is beginning to mount in the Christmas decorations contest. The judges will be served hot punch at the home of Mr. and Mrs. Byron Terrie, 416 Dalebrook, before they begin their work, and after the judging is complete, they will all return to the Terrie home for a buffet.

The Westchester branch of WNFPA is sponsoring the contest. The judging will be done sometime between Dec. 26 and 30. Winners will be identified by ribbon markers, visible to viewers.

**MOVING HERE** from Royal Oak, Mr. and Mrs. Clifford Davis and youngsters, Billy, 12, and Kathy, 7 months, now occupy the home at 2635 Heathfield Dr. in general sales manager for the Tyles Industries.

## Got Any News?

Your correspondent would like to hear from you.

Here are the correspondent and the areas they cover:

**If you live in Bloomfield township, north of Maple, or in Bloomfield Village**  
(Covering all of Bloomfield township, from Maple road north east to Woodward)

CALL: Gloria Jessup, M 6-3257

**If you live in North Adams:**  
CALL: Elizabeth Yates, M 6-1682

**If you live in Lathrup or Cranbrook Village:**  
CALL: Gloria Jessup, MA 6-3257

(Covering the Village of Beverly Hills and the South Berk shires)

CALL: Louise N. Kraemer, MI 6-9716

**If you live in Franklin:**  
(Covering all of the villages of Franklin, Bingham Farms and Wood Creek Farms)

CALL: Nita Hurd, MA 6-3224

**If you live in Bloomfield township, south of Maple:**  
(Covering all of Bloomfield township, from Maple road south)

CALL: Karol Darling, MA 6-6348



**THE TEA COZY**

When the time is on the tree, cuddle up to a glowing hearth in our gently fired cotton quilt gingham check coat which comes in angel pink or blue. 7-15, 15.00.



**PINE CONE TROLLS**  
The Swedish untold to any cottage. Page troll, 3.50. Baby troll, 1.00.

**THE COUNTRY MOUSE**  
Gaily dressed for holiday festivities. 5.50.



**COUNTRY CHECKS**  
For your active life, in woody tones of brown and beige wool, tailored to a fit. Knee warming "A" skirt, \$16.10-95. Matching dark brown shantung corduroy with check trim. 34-40, 15.95.

**THE SKANDEL JUMPER**  
Enjoy simple holiday merriments in cheerful shepherd's navy or holly berry red lumbard in brass. S.M.L. 21.00. Its combine with the flannel or red/white/blue tetterial cotton shirt with prove trim. \$16. 8.00.



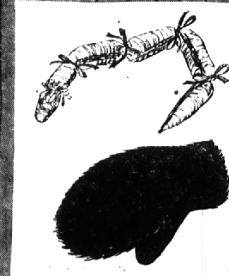
**THE MOHAIR POUFS**

Light as angel hair - warm as fur, these light as angel hair mohair ponfs sweet-handknit imported Italian mohair sweaters will cuddle you on frosty mornings or snowy evenings. Both come in soft or heavy weight. Mohair ponf in blue. S.M.L. Cardigan 25.95. Pullover 18.95.



**R.S.V.P.**  
To holiday merriments in a long slip of mohair seductively slit to the knee to show a shapely leg and a surprise lining. In raspberry or plum lined in angel blue. \$14. 42.00.

**ENGLISH TOFFEE**  
Elegantly mixed in a conular with a blue delft or wedgewood design. 2.00.



**THE SITHERING IDIOT**

In unexpected exotic print, bowed and bawdy. 3.50.

**THE BUNNY FUR MITT**

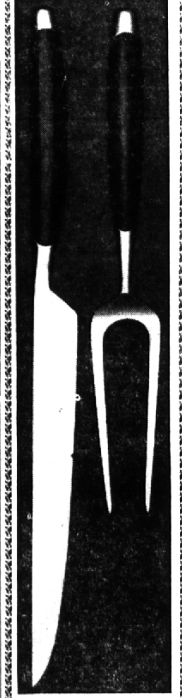
For frosty pinks. Comes in red, black or white. 2.50.



**THE MUSHROOM DOLL**

For your favorite cherub. In loveable white plush with colored polka dot cap. 3.50.

**THE GINGERBREAD FAMILY**  
For tots, a favorite comes true. In huggable ginger brown plush. Papa 11.00. Mama 6.00. Baby 3.50.



## THE ART OF CARVING BY LAUFFER CARVINGWARE

The precision tools of this art, brought to a new point of perfection, blending beauty with performance. Forged, high carbon stainless steel, hand-honed, tapered to give flexibility for complete control. The handle uniquely designed to achieve absolute balance. Impressive as a gift, and on your own table. Set in walnut chest, \$25. Come in choice from our large selection of Lauffer Carvingware.

## del Gaudio 148 Pierce

A Good Place For Brides and Christmas Shoppers

# B. Siegel

## KAY COOLEY BIRMINGHAM B

enjoy heavenly comfort in fluffy-soft

# Glamour Quilts

of KODEL<sup>®</sup> polyester fibre

Enchanting quilted robes, as soft as down, light weight as whipped cream. The prettiest robes ever to grace a fireside.



A . . . all over quilt with satin and organza applique at neck and sleeves. Mint, pink, candle. 10 to 16 . . . 14.98. B . . . all over dotted embroidered quilt. Peter Pan collar. White with pink or blue dots. Small, medium, large . . . 35.00. C . . . Mandarin neck, velvet edging at neck and down front. Blue, white with blue, pink with hot pink. 10 to 18 12.98. Robes . . . all stores.



C.