

TODAY'S FAVORITE
LIGHTWEIGHT BICYCLE

Schwinn
RACER



Here's today's lowest-priced quality lightweight! Schwinn diamond-type frame, Tubular rims, 3-speed gears and hand brakes. See it now!

\$2 PER WEEK



OPEN
TIL **9**

USE OUR LAYAWAY
"CHARGE IT"

TRAIN DEPARTMENT

TRAINS OF ALL KINDS

"Trains of all types on Display dating back to 1830"
Over 50,000 Different Items to choose from
Bring the family—Look around—if you are interested in hobbies, Cars, Trains, Bicycles, Airplanes. You'll find them here.



Make this year the Christmas He's always wanted... with

AMERICAN FLYER TRAINS

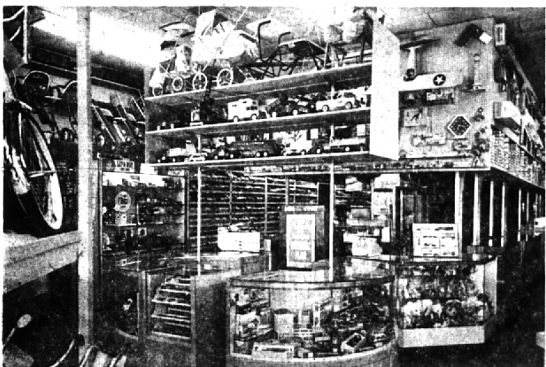
\$12.95 & up



CLOSE-OUT DEPARTMENT



MODEL DEPARTMENT



TOY DEPARTMENT

show evenings

MODELS sales - service
HOBBY SUPPLIES

parking facilities

CRAFTS STAMPS COINS OVER 50,000 ITEMS TRAINS PLANES BOATS

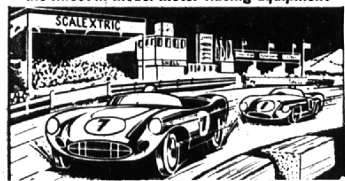
Schwinn

22524 WOODWARD AVENUE
FERNDALE 20, MICHIGAN phone LI3-2242



RACE-WAY DEPARTMENT

SCALEXTRIC by LIONEL
the finest in Model Motor Racing Equipment

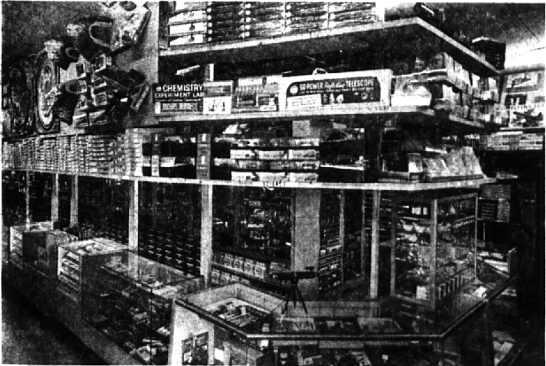


The BIG TRACK

Authentic Model Turnpike (Full 1/25 scale)

YOU STEER IT! **\$39.95**

- you control speed and direction—both forward and reverse
- change lanes to pass on AMT's exclusive crossover
- car spins out, dodges obstacles, goes over ramps
- races at scale speeds up to 160 mph, but never leaves the track
- you can convert your own AMT kits for Turnpike racing



SCIENCE DEPARTMENT



FIGURE DEPARTMENT



STAMP & COIN SHOP



REPAIR DEPT.