

## Birmingham Insurance Agency

114 S. Woodward

Representing:  
 AMERICAN GROUP  
 GENERAL—SAFECO  
 HOME INS. OF NEW YORK  
 PRUDENTIAL  
 OHIO CASUALTY CO.  
 ST. PAUL GROUP  
 TRAVELERS



OSCAR P. PETERSON  
 BRUCE F. RANDALL  
 FRANK W. WHITSON

MI 4-2422

"After We Sell We Serve"

## GIL JORDAN SAYS

# Steering Wheel Gives Man New Feeling of Confidence

Do you have an inferiority complex? Are you shy in the presence of others? Are you reluctant to get on your feet and express yourself?

If these things are bothering you I have a quick and easy solution. No, I'm not recommending that you join a public speaking class, or that you take any kind of a crash course in gaining self confidence so that you can face the world unafraid.

MY SECRET formula is simply this: If you don't drive an automobile go out and buy one immediately. If you already drive and you're still bothered with an inferiority complex you're not

handling yourself correctly. To gain confidence in facing the world under all conditions you must expose yourself to driving in heavy traffic and do more frequently and for longer periods.

Slowly you'll notice your temper getting shorter as your blood pressure rises. You'll also find that with your loss of patience your ability to tell a fellow motorist what you think of him becomes easier all the time. This shows signs of progress and in no time at all you'll emerge from a shrinking violet to a roaring lion.

TAKE THE case of a quiet bookkeeper I happen to know whom

I'll call Elmer Pablum. Elmer is a guy who works with figures all day and speaks only when he's spoken to. He's so scared of getting a dirty look from his supervisor that he won't take a minute away from his calculating machine to go to the water cooler.

If you walked up to him and gave him a kick in the shins he'd probably say, "Pardon me, I'm sorry my shins got in your way." He'd also blush and secretly hope you wouldn't hold it against him. He's just thankful that you didn't take a poke at him and ruin his green eye shade which he has worn for thirty years.

WHEN FIVE o'clock rolls around and Elmer steps into his Rambler station wagon you'll find quite a change in our boy. Now he's master of all he surveys and heaven help the driver who gets in his way. When he's parked at a traffic light the motorist in front of him must be ready to jump the gun the moment the light changes. If he doesn't hit that gas pedal and blast off, old Big Mouth Elmer will give him a pretty candid opinion not only of his ability to drive but of his general intelligence.

If the slow moving motorist gives him an argument Elmer is apt to wave him over to one side of the road and give him a lesson in the manly art of self-defense.

NOT ONLY does Elmer feel he has a right to weave in and out of traffic but he also takes the atti-

## Travel

(Continued from 1-D)

expected radiogram giving them an okay never came, however, and instead the vessel had to skirt Africa, stopping at Capetown to replenish the supplies of fresh fruits, vegetables and milk which had been exhausted.

Currie said he and his wife became interested in traveling in 1954 because of a letter which appeared in The Birmingham Eccentric from a person who had gone around the world on a passenger-freighter.

"We wanted to do the same thing," he said.

ANOTHER circumnavigator who claims he became interested in traveling through Boothy is R. F. Grandley, 1551 Sooton Lake Drive, Bloomfield Hills.

"I think traveling makes you understand yourself better," said Grandley. "It gives you a new perspective on everything you do. It makes you realize that you might not have all the answers."

The J. Donald McKays' interest in travel began by going to Mexico, where they continually returned for many years. They made their first circumnavigation in 1950.

"We're going to cover the African continent next spring—as far as we're allowed to go," he said.

"When visiting other parts of the world, probably the most important thing is to become acquainted with the people. We have done so to such an extent that people from other countries have come here to visit us," said McKay.

DON AHRENS, 510 Haverhill, Bloomfield Hills, says he's insulted if interrupted when watching the George Pierrot program on television.

He and Mrs. Ahrens made their first circumnavigation in 1957, their second in 1959. After returning from the Bloomfield Art Association tour next spring, they plan to make their third trip around.

Asked how he became interested in traveling, Ahrens replied, "I used to be a vice president of General Motors, traveling on the road all the time. I just got in the habit of it."

AHRENS TOLD of one "hair-raising escape."

As the Indian pilot of the DC3 in which they were riding, along with 21 other passengers, was trying to land on the muddy runway of an airport in the backwoods area near Lake Annapurna, a sacred cow suddenly appeared in the middle of the runway.

To avoid hitting it, the pilot swerved, ending up against a fence with one wing in the red mud.

The demands of their jobs call for other members of the Circumnavigator's Club out of the country.

J. D. Richardson Jr., 1435 Glenary Road, Birmingham, has an import-export business with offices in every major city of the world, which keeps him "traveling constantly."

Richardson feels there is a definitely increasing interest in travel reflected in people's desire to travel to places they have never been be-

fore such as the Far East, not just Europe.

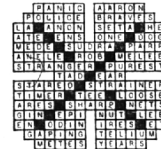
JOHN W. Kinsey, 2782 Hylane, Birmingham, sells machines when abroad. He thinks his interest in far-away places began from a boyhood hobby of collecting stamps.

Kinsey, incidentally, hates to travel. "I love being there, but I hate getting there," he said, and definitely thinks jet the best means. James T. Robertson, 4285 Chesnutfield, Birmingham, also travels because of his work—done mainly in Ford Motor Co. plants abroad, but takes little time off to explore.

HARVEY BUMGARDNER, 550 E. Long Lake Road, Bloomfield Hills, a Detroit-Edison executive, returned the day before Thanksgiving from his second trip around the world.

Bumgardner felt that there was an increased interest in travel and that it was brought about in part by the Jet Age, which (as Kinsey pointed out) minimized the time spent going and coming.

Answer To Puzzle No. 735



tude that everyone else must make December 6, 1962 THE BIRMINGHAM (MICH.) ECCENTRIC 5-D way for him.

Now and then a trailer truck gets out of his car his personality (changing the personalities of many can't get out of his way in time drops back to his quiet money way people. It can change a mouse into a lion, a chicken into a vulture, a gentleman into a jerk.

Fortunately for Elmer, none of paratory to helping his wife pre- the gentlemen into a jerk. The impatience, the loss of temper with its resultant recklessness also can change a live driver into a dead one.

When Elmer arrives home and The automobile has a way of a dead one.

## DRAMATIC!



Yes, this magnificent Foxcroft home is most dramatic and the tree-studded site serves to enhance its beauty. Walking distance from Elementary-Jr. High schools, and just a few minutes from shopping and transportation. Too, it's a perfect house for an excellent traffic pattern. The three bedrooms are spacious and there are such special features as automatic garage door openers, carpeting, draperies, basement. A top house in a top location for \$37,250.

MAX BROOCK INC.

300 S. WOODWARD

MI 4-6700

## CHRISTMAS IDEAS

We dislike being commercial at this time of year but since we are in business and you have needs, it is important that we both get together.

1. CRESCHE & FIGURES by Anri of Italy. Beautiful delicately colored wood carving.

2. Imported ceramic ducks and birds.

3. Small CAST STONE pixies, squirrels, pigeons, contemporary bird for garden and terrace ornament.

DON'T OVERLOOK THE EXCELLENT gift possibilities in good gardening tools and equipment—

PRUNING SHEARS — TWIST 'EMS — GLOVES—GARDEN BOOTS—TROWELS — FLOWER FROGS — SHOVEL — LOPPING SHEARS—HANDY CART—PRESSURE MASTER HOSE—GARDEVATOR — SPRINKLER — WATER CAN — ROSS ROOT FEEDER — POTTERY—VASES—KAN KART—ET CETERA.

5. GARDEN ORNAMENTS:— Cast stone statues, bird bath, pedestal, fountains; sun dial, astrolabe, recirculating pumps.

6. JACK & JILL HOLLY TREE — \$10.00 a pair. FAITH TREE (EVERGREEN) \$4.00 ea.

7. IRON DUCKS—for door stop or patio— a NICE DUCK & a NAUGHTY DUCK— \$11.50.

8. VIRGINIA PLANTER—2 & 3 tiered in antique green. Unusual table decoration.

EXTRA HOURS  
 OUR STORE WILL REMAIN OPEN  
 WEDNESDAYS UNTIL 5:30 P.M.  
 FRIDAYS UNTIL 9:00 P.M.  
 (Through December 21st)

10. POTPOURRI:  
 MADONNA FIGURES  
 DELLA ROBIA PLAQUES  
 CANDLE CANDELABRA  
 ANGELS OF ALL KINDS  
 LONG FIREPLACE MATCHES  
 LOG CARRIERS  
 SPANISH IRON BELLS  
 CHRISTMAS PACKAGE TIE-ONS  
 JR. EXECUTIVE CHAR-BROIL GRILL — \$59.00  
 JIMBO JUMBO PEANUTS— 3 LB. BAG — \$2.75  
 CHRISTMAS STOCKINGS FOR DOGS & CATS  
 SAKI BAGS & CARPENTER BAGS  
 PECANS—WHOLE HALVES— 1 LB. BAGS  
 ET CETERA

## McCLELLAN-BALL CO.

Everything for the Yard and Garden

850 S. WOODWARD, BIRMINGHAM, MICH.  
 FREE AREA DELIVERY Midwest 4-4133



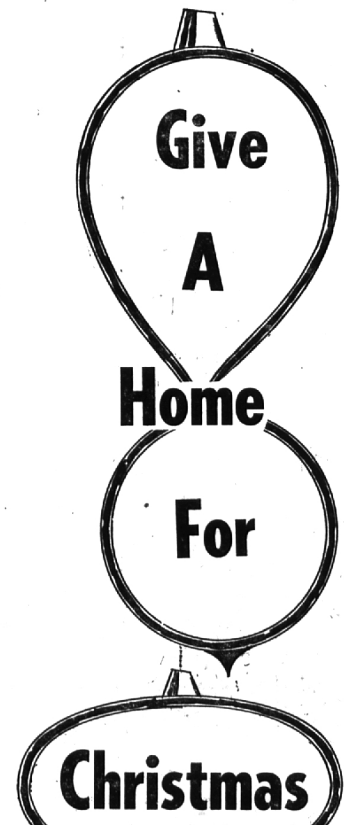
COUNTRY SQUIRE—Set on a beautiful, rolling 2 acre site in Franklin Village, this impressive Bi-level ranch is tastefully decorated throughout. There are 4 excellent bedrooms, formal dining room, 2 fireplaces, 2 paneled family areas, jalousied porch, large storage-hobby room, and attached 2 car garage. ELBOW ROOM! \$37,750.

OPEN 'TIL 8 P.M.

BIRMINGHAM  
 315 S. Woodward  
 MI 6-7900

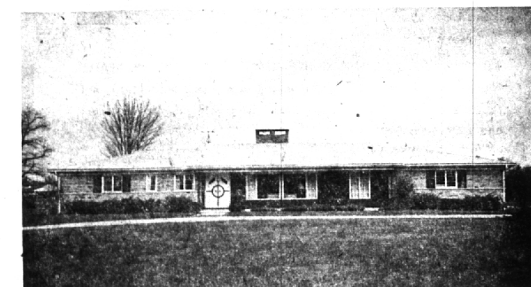
Showcase of homes  
 HALL & YOUNG INC. REALTORS

BLOOMFIELD  
 4114 W. Maple  
 MA 6-5900



CLOSE-IN BIRMINGHAM LOCATION  
 3 BIG BEDROOMS — Built-in Appliances  
 \$25,900

You will love every inch of this roomy home. Separate dining room, lovely master bath, and 2 one-half baths. Cozy fireplace and 2 1/2 car att. garage. A "must-see" on your list today. \$2,500 down.



DRAMATIC "BERKSHIRE" SETTING  
 Curving 190 Ft. SITE — 2 1/2 BATHS  
 \$39,500

A Big, Beautiful, Family Room gives Plenty of Comfortable living to the Family who enjoys plenty of space mixed with the coziness of a big fireplace, and many other built-in features. Extraordinary bedrooms, screened porch, separate dining room, and a 3 car garage. All carpeting and drapes, washer, dryer, refrigerator, and other built-in appliances included.

Chamberlain Co.  
 Realtors

MI 6-6000 JO 4-6000  
 975 S. HUNTER BLVD.  
 BIRMINGHAM, MICHIGAN