

### Jazz Concert Set Sunday At MSUO

A Sunday afternoon jazz concert will be the next event in the Michigan State University Oakland lecture-concert series.

The Jack Brokenha Quartet, headed by the former director of the famed Australian Jazz Quartet, will play at 3 p.m. Sunday in the Gold Room of MSUO's student center.

A native of Australia, Brokenha began his professional career at 6, playing the xylophone in vaudeville shows, and, at 14, became vibraphonist and percussionist with the South Australian Symphony Orchestra, conducted at one time by Sir Thomas Beecham.

Since 1959, Brokenha has lived in Detroit, and now is on the staff band of WXYZ-TV, and does a record program on WQRS-FM.

He has appeared in concerts at famed halls, including Carnegie, and at nationally known night clubs, including Birdland and the Blue Note, and on many college campuses, including Illinois, Maryland, Virginia, Harvard and Wayne State.



Up in the AIR about what form of HEAT is best?

Call Torrence Oil Company... there's a new development in Home Heating that you won't want to miss. It's the greatest advancement in Heating in years.

**TORRENCE OIL COMPANY**  
HEATING DIVISION  
Midwest 4-9000

## BRIDGE in BIRMINGHAM

By BUD MAYBAUM  
Southern Michigan Bridge Association

It is a pleasure to report that John and Phyllis Malstrom of the Birmingham area not only won the recent Birmingham championship but also the Pontiac championship. Today's hand, as played by them, displays the importance of partnership understanding. At a quick glance of all hands, it is easy to decide that the contract should be four hearts. However, many of those who played this hand arrived at other contracts.

**NORTH (Phyllis Malstrom)**  
♠ K Q 7 6 4  
♥ K Q 9 8 4 2  
♦ 5  
♣ 4

**WEST**  
♠ A 9 3 2  
♥ J 6 3  
♦ K Q  
♣ A J 9 3

**EAST**  
♠ 10 8  
♥ 10  
♦ 10 9 8 7 4 3  
♣ 10 6 5 2

**SOUTH (John Malstrom)**  
(dealer)  
♠ J 5  
♥ A 7 5  
♦ A J 6 2  
♣ K Q 8 7

Neither vulnerable.  
The bidding:  
**SOUTH WEST NORTH EAST**  
1 ♠ Dble 2 ♣ pass  
2 ♥ pass 3 ♥ all pass  
opening lead: 10 ♠

### Musicale Sings Christmas Music

Birmingham Musicale's Christmas concert will be given on Thursday, at 1:30 p.m. in the First Baptist church located on Willits at the foot of State St.

Each year, residents of the Birmingham community are invited to be guests of the Musicale at the Christmas program. It is also a tradition to have this program in a different church of the community each year.

Mrs. Robert W. Kutscher, chairman of the day, has chosen "The Nativity" as the program theme.

The Birmingham Musicale Choral Ensemble, directed by Alice Egan, will open the program with a group of Christmas carols.

Included will be a Spanish carol "Hacia Belen en Barrios" arranged by Mrs. John R. Phelps, past president of the Musicale.

TO CLOSE the program the Ensemble will perform Bach's Cantata No. 142. Soloists with the choral ensemble will include Mrs. Ted V. Linabury, soprano, and Mrs. William F. Driver, contralto.

Mrs. Ronald M. Kasperzak will play the flute obligato. Members from the Musicale's Instrumental Ensemble and Mrs. Philip C. Whelan, pianist, will serve as accompanists.

Between choral groups, Mrs. Glen C. Hill will give an organ recital. Included will be works by Bach, Bedell, Taylor and Purvis. Mrs. Hill is currently assistant organist at Central Woodward Christian Church in Detroit.

MRS. COLIN S. Grant-Watters, Hostess Chairman will greet members and guests at the door. She will be assisted by Mrs. Harry W. Gross and Mrs. Hamilton C. Scharff.

### Erratum

Due to an error, the "biographical" information was left off an Eccentric book review last week by local architect Edward X. Tuttle Jr.

The book is "Eero Saarinen on His Work: A Selection of Buildings Dating from 1947 to 1964 with Statements by the Architect," edited by Aline B. Saarinen. It was published by the Yale University Press, 1962, contains 108 pages, is boxed and will sell for \$12.50 for a limited time.

### OFFICE & YARD FOR RENT

575 S. Eton—S. of Maple, E. of Adams  
APPROX. 1½ ACRES — RAIL SIDING

Covered Shed & Block Warehouse  
Gas Heat and Hot Water Tank

CALL MI 6-5800



### Charming-- And Deceptively Spacious

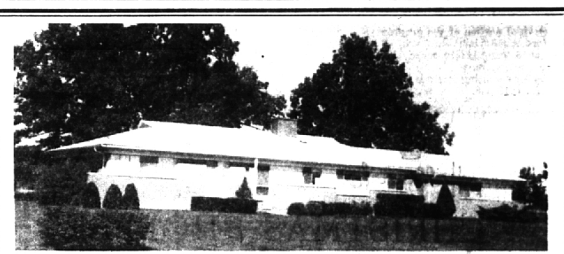
Delightfully located on a wide homesite comprising approximately one and one-half acres and surrounded by mature trees, this charming brick Cape Cod is deceptively spacious. The living room and dining rooms are separate and large. There is a library and, as well, a recreation room in the basement. Four exceptional bedrooms accommodate a large family comfortably. Every facility is provided for Pleasant family life. And the price is really realistic—only \$29,500. The adjoining lot is also available.

**Walsh, James & Wasey Co.**  
Realtors Since 1918  
431 S. Woodward Ave. Birmingham  
Midwest 4-6500  
Detroit, JO 4-6033

**TODAY-**  
the cost of a Bloomfield building site is largely a state of mind  
*Overbrook\** offers, so much more—  
—values have changed!

**MAX BROOCK INC.**  
MI 4-6700

\*Water, sewers, paved roads, underground utilities



ROLLING HILLS—and roomy 150 x 150 ft. lots form the setting for this beautifully maintained brick ranch. There are 3 excellent bedrooms, 2 glistening tile baths, relaxing family room and adjoining spacious kitchen with all the built ins, and att. 2 car garage. WHY NOT CALL AND SEE? \$26,500.

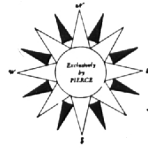
BIRMINGHAM 315 S. Woodward MI 6-7900  
BLOOMFIELD 4114 W. Maple MA 6-5900

OPEN 'TIL 8 P.M.  
**Showcase of homes**  
HALL & YOUNG INC. REALTORS



*Bi Level*  
**FRANKLIN and GROVES Schools**  
*Beautiful Garden with BBQ*

- 3 bedrooms with space for 4th and 3½ baths . . .
- Family Room 29 X 16 Lower Level with Stainless Steel Bar . . .
- Separate Dining Room with Balcony and Stairs to Garden . . .
- 3 Fireplaces . . .
- Country Kitchen with Slate Floor . . .
- Breakfast Nook 12 X 6 . . .
- Workshop on Lower Level . . .
- Jalousied Porch . . .
- Carpeting Throughout . . .
- Built in Bookshelves . . .



**FRED PIERCE INC.**  
460 NORTH WOODWARD, BIRMINGHAM, MICH.  
Midwest 7-1414

15 Birmingham Years

## FRANKLIN VILLAGE—UNIQUE

*Blending of the OLD and the NEW*

On Franklin Road — zoned COMMERCIAL to a depth of 200 ft. the property extends some 400 ft. and widens to about 340 ft. overlooking a wooded ravine and the Franklin River.

The quaint old house is still very livable or could be used for a small shop or business.

The ancient carriage barns offer endless possibilities to the enterprising, adventurous and imaginative.



4 BEDROOMS — 2½ BATHS — LIBRARY plus white paneled Family room with raised hearth with barbeque and sliding windows to future patio. Marble foyer—white dado in Dining room. Living room with Colonial fireplace. \$43,900.

3 BEDROOMS plus a first floor room which can be either a 4th Bedroom or Den. Parquet-floored, paneled and beamed ceilings. Family room with raised hearth and barbeque. Step-down Living room with fireplace. Separate Dining room. \$42,900.

Beautifully equipped Whirlpool Kitchens and one has in addition a clever pantry. Both lots are large and, as you can see, simply beautiful with gorgeous, towering mature trees. Winding blacktopped roads. This is a secluded park-like area and yet you are less than a half mile to a main road. The best of both worlds.

OR  
Wherever you want to live—  
**SEE US—We are now**  
affiliated with the largest inter-continental referral system in the entire United States.  
Reputable—Reliable—Resourceful  
American Institute of Marketing Systems, Inc.

**SNYDER KINNEY & BENNETT INC.**  
Realtors  
239 S. Woodward, Birmingham MI 4-7000  
32740 Franklin, Franklin MA 6-9600

