

## Sixty Teachers Join in Tour Of Power Plant

Some 60 members of the Oakland County science teachers association were feted by the River Rouge power plant of the Detroit Edison Co. last week.

The event commemorated the association's sixth anniversary. Members represent science departments in junior and senior high schools throughout Oakland County.

After dinner, the group toured the plant to observe the process by which coal is converted to electricity.

A QUESTION and answer period followed the tour and Edison engineers provided technical information to answer teacher questions.

OCSTA meetings are held the last Wednesday of the month. Meetings alternate between the various schools in Oakland County and specific sites selected for field trips.

## 7 B'ham Educators Now Serving on State Committees

Seven members of the professional staff of the Birmingham Public Schools are currently serving on a number of state committees of the Michigan Department of Public Instruction.

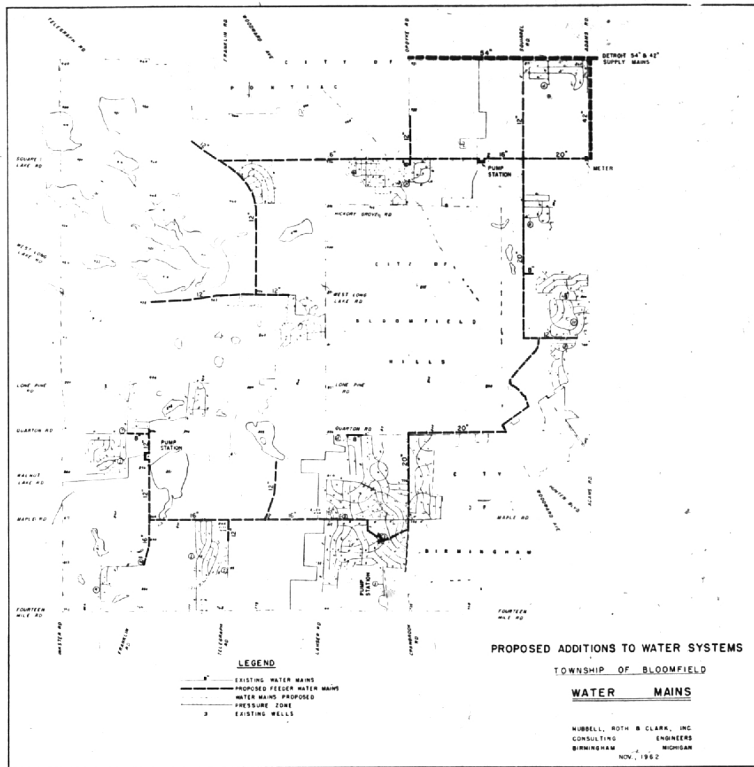
Dr. William Forbes, science coordinator, and Mrs. Dorothy Haven, third grade teacher, Adams School, are serving on the conservation committee. William Corliss, director of elementary curriculum, the research committee; Mrs. Velma Rully, arithmetic consultant, the science committee; and Mrs. Margaret Grazer, librarian, the instructional committee; and Mrs. Louise Couture foreign language committee.

The overall purpose of the committees is to upgrade continually the quality of educational instruction through study and workshops both at the local and state levels.

## Organists Schedule Christmas Musicals

FRANKLIN—a traditional Christmas music program is being planned for the Franklin Garden Club today at the home of Mr. and Mrs. Clifford Baugh of Hawthorne, Birmingham.

Duets and solos for the organ will feature the talents of Mrs. Baugh, her mother, Mrs. Nettie Buford, Winfield Himman and Mrs. Donald Hogue.



## Proposed Route for Township Water Main

This map shows proposed route of some 21 miles of water transmission main to be built by Bloomfield Township to provide Detroit City water to township residents. Total estimated cost of building the mains is \$2,050,000 to be financed

by revenue bonds. Lateral mains, connecting to the transmission mains, will be developed by special assessment districts. Contracts between Bloomfield Township and Detroit setting up the system will be executed in the near future.

Dear Santa:

For Christmas I want a play shawl, a thumbelina, a playmobile, a table and three chairs, drums, a coke machine, a cotton candy machine, and a snow cone machine.

I am six years old so my sister is writing this for me.

Also I want some records and a box of stationery.

Love,  
NANCY ANN MITCHELL

## City Accepts Bid For Traffic Light

Birmingham city commissioners last week accepted the low bid of \$1,320.65 from Splane Electric Supply Co., Detroit, for installation of a traffic signal at Woodward and Oak.

Commissioners had authorized the stop light as a measure to slow

B'HAM ECCENTRIC  
Thursday, Dec. 6, 1962

Page  
5-B

Woodward, which has a 30-mpg limit.

THE MOVE came about as a result of a request to provide a crossing guard at the Woodward-Harmon intersection, used by children from Holy Name School.



gift for a perfectionist:  
**THE SNAP-TAB SHIRT**

of end-on-end cotton madras, designed by Douglas MacDaid for Wren Shirts, Ltd. and for the man who prefers fine single needle tailoring, trim snap-tab collar, and slightly tapered lines. Blue, Wheat & Olive. 14 1/2 to 16 1/2 sizes. 5.95

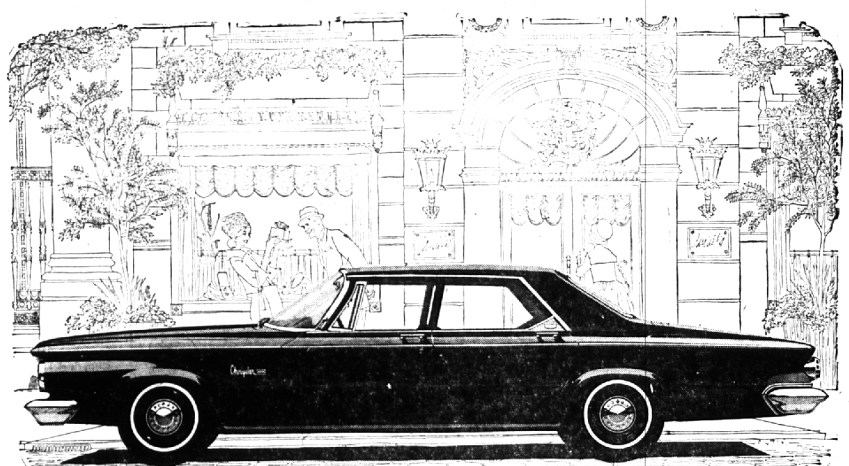
**Jacobson's**  
Shop for Men

305 N. Woodward at Willits  
Birmingham

Headquarters for  
Johnston & Murphy and Jarman Shoes

2 Hours Free Parking  
Have Your Ticket Validated  
When You Make a Purchase  
at Jacobson's

For Your Convenience  
Jacobson's Will Be Open Every  
Thursday & Friday Evening  
Until 9:00 P.M.



This is the economical Newport 4-door sedan

\$2964.\*

Small price for this full-size beauty  
that's warranted<sup>†</sup> for 5 years or 50,000 miles

\$2964 is the Chrysler price that still surprises people. It's a price that includes a crisp, new, custom look. (Some call it the newest look in the business.) For this kind of money, you will enjoy wide, deep, comfortable seating for six. You get famed Uni-body construction that's as solid as a safe — with no bolts to breed rattles. More? Yes, more. For \$2964 you get

torsion-bar suspension — the kind that gives you sure, well-balanced handling. And interior fabrics that would cost you close to \$10.00 a yard. Further, you get the assurance that your investment in a full-size Chrysler won't be undercut by a jr. edition bearing the Chrysler nameplate. We don't build them. Top these many benefits with the fact

that the power-train of every '63 Chrysler is warranted for 5 years or 50,000 miles (makes your Chrysler worth much more at trade-in time because the warranty holds good for the next owner, too). Ready to move to the big one with the small price? Then see your Chrysler dealer.

\*Manufacturer's suggested retail price of Newport 4-door sedan, excluding optional equipment. Dealer will list extra.

Your authorized Chrysler Dealer's Warranty against defects in material and workmanship on 1963 cars has been expanded to include parts replacement or repair, without charge for required parts or labor, for 5 years or 50,000 miles, whichever comes first, on the engine block, head and internal parts; transmission case and internal parts (excluding manual clutch); torque converter, drive shaft, universal joints (excluding dust covers), rear axle and differential, and rear wheel bearings, provided the vehicle has been serviced at reasonable intervals according to the Chrysler Certified Car Care schedule.

**CHRYSLER**  
CHRYSLER DIVISION CHRYSLER  
MOTORS CORPORATION

**BIRMINGHAM CHRYSLER PLYMOUTH, Inc., 912 S. Woodward Ave., Birmingham**

SEE "EMPIRE," CHRYSLER CORPORATION'S NEW WEEKLY HOUR-LONG TV ADVENTURE SHOW

**SAVE**

REGULARLY...

Save By Dec. 10th  
Earn From The 1st.



you'll be glad  
you did...

THERE'S NOTHING QUITE  
LIKE A SAVINGS ACCOUNT

"Established in 1890 — Never missed paying a dividend. Over 72 years of sound management — your assurance of security. Assets now over seventy-five million dollars.

**4 1/4%**  
CURRENT RATE  
(PER ANNUM)

**CAPITOL SAVINGS & LOAN ASSOCIATION**

27215 Southfield Rd. at 11 Mile Rd.

EL 6-7770

Downtown Detroit Office  
234 State St. WO 2-1078

KE 7-6125