

School Enrollments Up This Year

By IRMA N. DAVIS
Township Editor

Baseballs and bikes, dolls and toy dishes are getting an extra work-out now as children in the Birmingham area scent the approach of a new school year.

The local school population explosion continues on a booming note as educators cast an estimating eye at enrollments.

In Birmingham, officials figure that some 13,105 pupils will march through elementary, junior and senior high school doors on or soon after opening day, Sept. 6. One year ago, there were about 375 fewer pupils.

Classes will be held only one-half day on the opening date, with full-time schedules commencing on the 7th.

IN THE BLOOMFIELD Hills school district, about 4,275 eager learners will be enrolled as opposed to 3,965 in Sept., 1961. A half-day session is planned for Sept. 6, with full days beginning the 7th. At the new East Hills Junior High and the George G. Booth Elementary School, opening dates are set for Sept. 10, due to delays in construction.

However, parents of children in these two schools are advised to check with the administration.

SOUTHFIELD'S 8,600 pupils will meet Sept. 5, for a half day, with full schedules beginning the 6th. The enrollment figures in this school system reflect the overall increase in the area. A year ago, enrollment was 7,900.

The eight parochial schools in the area will open either Sept. 4 or 5, depending on the particular school. They are St. Columban, St. Regis, St. Hilar, Our Lady Queen of Martyrs, Holy Name, Brother Rice, Marian and St. Bede's. The latter three are high schools.

Total enrollment for seven of the eight area institutions in this category, is expected to be about

5,500 pupils. Enrollment figures at Brother Rice High School, are not yet available.

OUR SHEPHERD Lutheran School will open Sept. 5 with registration the 4th. Enrollment is estimated to be about 185 pupils. The six faculty members will hold conferences beginning Aug. 28.

Private schools will admit more students also: Detroit Country Day, 310; Bloomfield Country Day, 65; City and Country School of Bloomfield Hills, 315; and the Academy of the Sacred Heart, 340. The latter school, a Roman Catholic institution, is classed as a private school.

Opening dates for these four schools are Sept. 12, Detroit Country Day; Sept. 17, Bloomfield Country Day; Sept. 12, City and Country; and Sept. 5, Sacred Heart.

CRANBROOK'S three schools, Kingswood School for Girls, Cranbrook School for Boys and Brookside set enrollment at a total of approximately 345, with no appreciable increase over last year's roll call.

The total increase in the 1962-63 Birmingham school budget over last year is \$845,752.23. Of this increase, \$690,257.90 — or 82 per cent — will be used in the area of instruction.

The increase in the instructional budget is due, in part, to the construction of the new Westchester and Meadow Lake Schools plus cost of four additions to other district facilities.

THE UPGRADING of teachers' salaries schedules is also responsible for part of the increase in this area. The cost of opening the new facilities, as well as operation, maintenance and other expenses, is incorporated in this section of the budget.

Much of the money spent on the building programs came from the category, is expected to be about

voters last November.

Among the major changes in curriculum concept are revised elementary arithmetic and social studies programs and up-dating of the science and language arts programs.

JUNIOR HIGH students will make a more intensive study of earth science to replace the general science courses in grades seven and eight. New materials will be introduced to mathematics students in these grades.

Foreign language curriculum will continue to expand, affecting both junior and senior high pupils and Russian will be offered to high schoolers. Also strengthened will be the senior high art curriculum.

Some 552 classroom teachers will be instructing students with 111 of them newly hired. Pre-school meetings for the professional staff have been scheduled—Aug. 31 for new members and Sept. 1 and 5 for all teachers.

IN BLOOMFIELD Hills, the new budget, \$2,470,000, is an increase of \$497,071 over last year. The additional funds will be used for the hiring of new teachers, for salary raises for them and for construction of physical plants.

In the plans is the non-graded elementary classroom program with a strong emphasis on another program that will give teachers at all levels added time to study curri-

culum improvement. Early school dismissal six times a year is planned to allow the needed time.

A teacher total of 220 includes 18 new instructors. All instructors will meet Sept. 1 and 5 for pre-school conferences.

AT A TOTAL COST of \$2.2 million, the George G. Booth elementary school, the East Hills Junior High and a high school addition will be ready soon to serve Hills' school students.

The addition to the present high school will provide 30 new rooms, including classrooms, a band and music room, little theater, and more laboratories. In the latter category, are a new language, a new math lab and expanded science lab.

A SOUTHFIELD School District budget increase of \$618,000, to a total \$1,174,000, will provide better education to more pupils in this system.

Curriculum expansion features introduction of enrichment materials at the elementary level and a comprehensive effort to coordinate the social studies program in all grades.

Junior high pupils will enjoy expanded television instruction and two language laboratories. Senior Highs will be offered German and Russian, and a Great Books course.

EXPERIMENTAL programs include mathematics for grades four through seven and team teaching and self-pacing techniques in English classes in the junior high schools. Other innovations are also scheduled for various grade levels.

Twenty new teachers have been hired and the faculty will meet Aug. 28 and 29 for orientation and conferences.

No new schools were built for the coming year but additions to four elementary schools will be ready by about Oct. 1. School officials are hoping to work toward a campus-type high school with labs on an addition probably due in the latter fall. Also in the planning stage are plans for a new senior high.

AMONG THE eight parochial schools in the area, St. Regis will give seven grades plus a new approach to its mathematics program. St. Columban has added to its television facilities for teaching language and other subjects and hopes to add six new classrooms and an eighth grade in the next year or two.

Holy Name is adding a new classroom and St. Hilar will increase its physical plant by three new classrooms.

Our Lady Queen of Martyrs will. (See ENROLLMENT, Page 24)

BIRMINGHAM ECCENTRIC

SCHOOL SECTION 13

WE HAVE THE OFFICIAL HIGH SCHOOL & COLLEGE SWEAT SHIRTS



From left, Pat Fulkerson, Carol Colburn, Kay Lee

Official Emblems on All Shirts

HIGH SCHOOL

- Groves
- Seaholm
- Bloomfield
- Derby

COLLEGE

- Notre Dame
- Mich. State Univ.
- Univ. Of Mich.
- Univ. Of Detroit

Sizes in
S, M, L, XL

\$2.98

F. J. Mulholland Co.

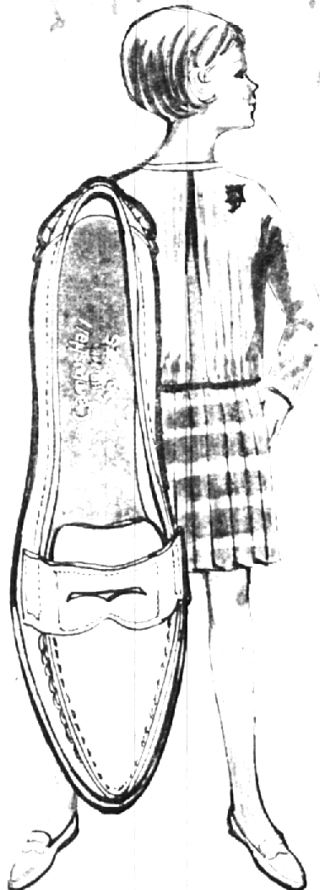
BIRMINGHAM

Open Thursday & Friday Evenings

233 North Woodward

Midwest 4-9111

B. Siegel Kay-Cooley



3 DAYS ONLY!

Our regular \$7.98 all hand-sewn penny loafer that will brighten your day and lighten your load.

SPECIALLY PRICED AT

5⁸⁸

2 Pairs for **11⁰⁰**

Our teen panel puts their endorsement on this terrific savings.

- Black Leather
- Brown Leather
- Grey Suede
- Camel Leather

190 West Maple
Midwest 4-7744