



ELLIS INC. SINCE 1945
MODERNIZATION
 Family—Activity—Recreation
 Rooms & Porches a Specialty.
MI 6-4188
KITCHENS - BATHROOMS
ROOFING - SIDING
 Most any alteration
 and repairs
FREE ESTIMATES TERMS

St. Dunstan's Play
 The St. Dunstan's Guild's first presentation of the season will be "Waltz Op. Darling" by Alex Gottlieb. The play will be given at the St. Dunstan's Theater on Oct. 26, 27 and Nov. 1, 2 and 3. The rest of the season's production have not yet been announced.



Land Fill Control Asked by Resident Of Village Sub

BEVERLY HILLS A petition signed by 12 families in the Village Sub neighborhood and 74 serious attitude with regard to fill in for the Rouge River bottom land sections, came before the council Monday.
 The petition concerned filling of lot 18 of Berkshire Valley subdivision. The petitioners, owners of bottom land, feel the land assets in flood control of the Rouge River basin, and that it should not be filled in any one portion without control.
 The council directed Village Clerk Mrs. Betty Chinn to write to Mrs. Mary Falter, owner of lot 18, and tell her she will have to file a petition for land fill. A similar letter will be sent to Eugene A. Magrath, 28220 Lakeside, who wishes to fill the north 10 acres of his property.

In Hawaii

Army Pfc. Thomas A. Latta, son of Mr. and Mrs. Al Latta, 1964 Hampton, Birmingham, recently completed 12 weeks of pre-arrival training at the 25th Infantry Division's Jungle and Guerrilla Warfare Training Center in Hawaii.
 To assist reports that these supply side classes are just the kind of comfortable night class.

CUSTOM DRAPERIES
 by
Mary Elizabeth
FREE ESTIMATES WALLPAPER & MATCHING FABRICS
 My home studio saves YOU money on quality fabrics, rods and carpeting.
CHECK other prices, then CALL MA 4-3266

At Alice's Wonderland

School Time SALE SAVINGS FROM 20 to 50% OFF



GIRLS
 SPECIAL GROUP
 • Skirts • Dresses
 • Blouses • Sweaters
 • Polo Shirts • Jackets

sale of SNOW SUITS

• Boys' Snowsuits
 • Girls' Snowsuits
 • Girls' Coats

SAVINGS ON TOYS!

Playskool • Fisher-Price • Tonka

Alice's Wonderland

Toys • Books • Clothing

595 E. Maple—Next to Englander's MA 6-1113

Practice Prize Winner

Rehearsing the prize-winning composition to be presented at the Delta Omicron convention in Detroit this week are (from left) Mrs. John Dulmage, 20082 Marshall, Southfield; Mrs. Richard Cass, 17005 Marguerite, Birmingham; and Mrs. Katherine Skelley, 1571 Cole, Birmingham, as Mrs. F. W. Gridley, 4451 Arlington Drive, Royal Oak, plays the piano. Both Mrs. Dulmage and Mrs. Gridley are active in the Birmingham Musicales. Local alumnae chapters of Delta Omicron are cooperating with the Wayne State University chapter in hosting the national convention.

Interlochen Prizes Go To 2 from Area

The grand finale at Interlochen National Music Camp (near Traverse City) for the summer of 1962 was held this past weekend.
 Among the beauty of the pine trees and the waters of Lake Wahkema, the Kresge Bowl was filled to capacity the entire week with approximately 4,000 visitors and campers.
 The program began Friday evening with a concert by the High School Concert Band conducted by Butler Eitel. Immediately following was the "dance concert" with the National High School Broadcast Orchestra and the High School Brass Choir.

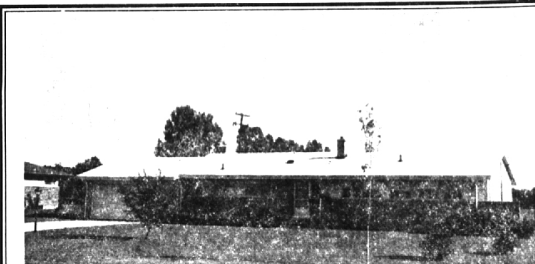
"The Skaters Ballet" was a variation of "Les Patineurs" by Meyerbeer. "Regulations," a modern dance number, was a satire on camp life choreographed by William Hugg. Concluding the program was "Emperor Waltz."
THE FINAL number was the selection performed for President Kennedy when the group visited Washington, D. C. Earlier in the season, performing in the "Corps de Ballet" was Sharon Snyder of Bloomfield Hills.
 Saturday evening began with the high school concert orchestra performing Brahms' "Nanie," Opus 52, and Williams' "Serenade to Music." Concluding the evening were The Choral Festival, Festival Choir, and University Orchestra performing "Requiem" by Fauré.

SUNDAY morning services were held at 10 a.m. and Dr. Joseph Maddy, President, spoke on "The Carpenter's Responsibility To Society."
 Immediately following services the National Music Camp honor assembly was held. At the time the Scholarship plans for next year were presented.

Children May Still Enroll at Nursery

Full enrollments are still open for children of preschool age wishing to attend North Family Life Nursery.
 The nursery is located on North-western near Latham. It is at all operations, has two qualified teachers, and meets Tuesday and Thursday mornings from 9-11:15 a.m. Classes began Sept. 4.
 For further information call Mrs. Diane, ED 6-9295.

Attaining honorable mention for the outstanding camper in the intermediate boys division was Gregg Bower of Bloomfield Hills. In the girls' high school division, Kay Backholder of Franklin, violinist and assistant concert master for the past season won a \$100.00 camp scholarship for the summer of 1963. She also received the Josephine Maddy scholarship, applicable at the Eastman School of Music, Rochester, N. Y., in the fall of 1963.

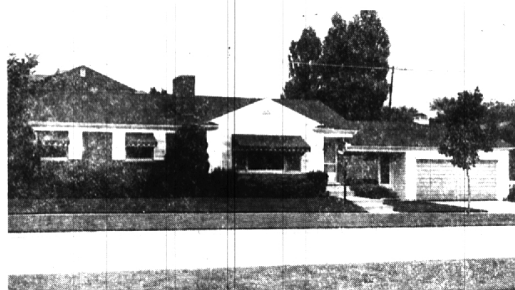


FOUR BEDROOMS—With a huge city park area to the rear of this trim brick ranch, there's loads of play area for exuberant children. Glass wall living room with paneled fireplace wall, 1 1/2 baths, and attached 2 car garage. **MOVE IN FOR SCHOOL! \$24,950.**

BIRMINGHAM
 315 S. Woodward
 MI 6-7900

Showcase of homes
HALL & YOUNG INC. REALTORS

BLOOMFIELD
 4114 W. Maple
 MA 6-5900



CITY

FULL BASEMENT has tiled floor, paneled Recreation room with built-in bar, and fireplace.

Good-sized living room with fireplace. Dining all. Kitchen with eating space. 3 BED ROOMS—2 FULL BATHS. Slate entry.

Large jalousied Porch. Triple-track aluminum storms and screens. Carpeting, Draperies, Awnings.

REAL VALUE FOR \$26,900.

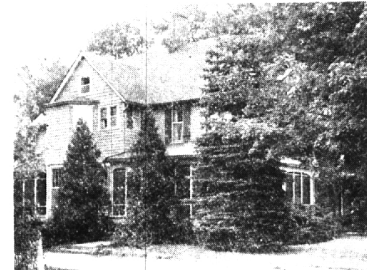
ON PINE LAKE

Huge site WITH GORGEOUS VIEW & mature trees. School bus at door. Close to Parochial School. A Family-sized Farm Colonial with large, high-ceilinged rooms. REMODELED in 1956 — IT IS INDEED CHARMING.

4 Bedrooms, 2 fireplaces—1st floor Library. Large screened Porch. 2-car Garage. Aluminum storms and screens. Full Basement.

SWIMMING, SAILING, BOATING, winter SKATING right at your front door. The ideal life for your children.

NEW LOW PRICE—\$26,900!



BEVERLY

Excellent area with 360 surrounding properties.

3 BED ROOMS, 2 full BATHS. Living room with fireplace. 1st floor paneled Family room. Separate Dining room. Kitchen with BREAKFAST NOOK, dishwasher, disposal, built-in oven & stove. Full Basement with PAN-ELED RECREATION ROOM & fireplace. Hardwood floors, copper plumbing. Carpeting and Draperies. IMMEDIATE POSSESSION. \$32,900.



We would like to introduce our staff



Standing, left to right: Warren Sumner, William Hand, Mildred Schmidt, Arthur Sevald, Rosemary Caswell, Whiting Raymond, Stanley Caddington, Lillian LaFontaine, Bruce Warnock. Seated: Sylvia Dall'Ario, Kathryn Kirwan, Margaret Fox, Fred Pierce, Broker, Miller Swearingen.

OUR OFFICES ARE THE LANDMARK AT 460 NORTH WOODWARD
 Investments—Insurance—Appraisals—Real Estate



FRED PIERCE INC.
 460 NORTH WOODWARD, BIRMINGHAM, MICH.
 Midwest 7-1414

Reliable
 Responsible
 Mature
 Experienced
 Representatives

Where in the World Are You Moving?
 SEE US—



We are now affiliated with the largest international referral system in the entire United States. Reputable—Reliable—Resourceful.
 American Institute of Marketing Systems, Inc.

SNYDER KINNEY & BENNETT

INC. Realtors
 239 S. Woodward, Birmingham MI 4-7000
 32740 Franklin, Franklin MA 6-9600