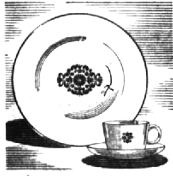


Only two of over 300 Open Stock Dinnerware Patterns offering top selections and priced to give top value.

Fine Dinnerware!

Settings for Your Table!



Franciscan FAMILY CHINA
 16 pc. Set \$24.95
 45 pc. Set \$74.95

Carfree TRUE CHINA SYRACUSE
 16 pc. Set \$25.95
 45 pc. Set \$79.95

Service of 8

Six patterns of each to choose from and both are Open Stock

Franciscan and Syracuse Casual China Carry a one-year, free replacement guarantee against chipping, cracking or breaking thru normal use in the Home!

Pontiac Pottery

Michigan's Largest

Dinnerware

Specialty Store

OPEN EVERY DAY

10 A.M. to 8 P.M.

NORTH END OF MIRACLE MILE SHOPPING CENTER ON TELEGRAPH ROAD

Telephone FE 2-8642

BRIDGE in BIRMINGHAM

By **BUD MAYBAUM**
 Southern Michigan Bridge Association

Shirley Campbell, a member of the board of directors of the Southern Michigan Bridge Association, is not only a teacher of bridge, but also a student of the game. Shirley is from the greater Birmingham area and can be seen at all the Birmingham games.

Carter Stayman, a new variety of the Stayman bid, was used by Shirley to her advantage in today's hand.

In this system, a response of two clubs over a no-trump bid of your partner, is non-forcing, but a bid of two diamonds is forcing. However it does provide for a fit in a major suit that one can arrive at game and make it.

Neither side vulnerable.

NORTH
 ♠ J 9 8 6 4
 ♥ 7 4
 ♦ J 10 6 2

WEST EAST (dealer)
 ♠ Q 3 2 ♠ 10 7 5
 ♥ J 10 5 ♥ K 10 8 5
 ♦ A K Q 7 3 ♦ K J 9 8 2

SOUTH (Shirley Campbell)
 ♠ A K 5 2
 ♥ A K 7 4
 ♦ A K 3
 ♣ A 9 5

The bidding:

EAST SOUTH WEST NORTH
 pass 2 NT pass 2
 pass 2 NT pass 3
 pass 1 A all pass

Opening lead: K ♣

SHIRLEY WON the opening

lead in her closed hand and drew two rounds of trumps to clear the suit and then led her nine of clubs, which West won with the queen. Shirley was careful to drop the six and eight of spades on her ace and king of spades leads to keep an extra entry in her closed hand.

At this point, West elected to lead and when Shirley played low from the dummy, East won with the king and returned a small diamond, upon which Shirley immediately played the ace.

Now all she needed to do was play a small heart to the ace in dummy, return the four of spades, overtake it with the five, play her queen of hearts and drop the small diamond from the dummy, making the dummy take the remaining tricks. Shirley not only made game, but five spades. Other tables also made five but did not bid it.

THIS EXAMPLE of the Carter-Stayman bid shows the great advantage of this bid. Note that a two spade bid by North, and North playing the hand, caused a club opening. West, upon winning the queen, returned a diamond, and North only made three spades.

Recent winners in the Birmingham area include Marge Bottler and George Anders; Dorothy Barton and Morris Mc Lennan; Dorothy and Harold Sandlemann; Pat and Herb Bayer.

Any coward can fight a battle when he's sure of winning; but give me the man who has pluck to fight when he's sure of losing. That's my way, sir; and there are many victories worse than a defeat. —George Eliot

Fund

(Continued from 1-D)
 sculpture designed by Marshall Fredericks.

The city spent about \$7,000 landscaping the park. A main waterline is in position to feed the fountain if and when it is constructed.

THE SCULPTURE would consist of six whistling swans, "wild wonderful birds that used to abound in this region, taking off into full flight northward, as our ancestors did from Detroit," said Fredericks, describing the proposed piece.

It would be cast in bronze and take about two years to complete once the funds were raised.

SAID FREDERICKS of the proposed swan fountain: "It could be unique. There is nothing I know of like it in the world."

The fund committee already has some pledges contingent upon the rest of the community being able to raise the balance of the necessary money. Breech said although he was unable to disclose the amount at this time.

"THIS SPOT of beauty in the very core of our civic center creates for our citizens a place to pause, a place to visit and a place to appreciate," Mayor Willett said.

"The enjoyment of arts in our community indicates that we should wait no longer to complete the plan that was designed some five years ago. Surely the beauty of this project will set an example that will inspire further beautification in our community."

Answer To Puzzle No. 718

10	11	12	13	14	15	16	17	18	19	20
21	22	23	24	25	26	27	28	29	30	31
32	33	34	35	36	37	38	39	40	41	42
43	44	45	46	47	48	49	50	51	52	53
54	55	56	57	58	59	60	61	62	63	64
65	66	67	68	69	70	71	72	73	74	75
76	77	78	79	80	81	82	83	84	85	86
87	88	89	90	91	92	93	94	95	96	97
98	99	100	101	102	103	104	105	106	107	108
109	110	111	112	113	114	115	116	117	118	119
120	121	122	123	124	125	126	127	128	129	130

Local Best Sellers

FICTION
 DEARLY BELOVED—Ann Morrow Lindbergh
 SHIP OF FOOLS—Katherine Anne Porter
 UHURU—Robert Ruark
NONFICTION
 OH YE JIGS AND JULEPS—Virginia Hudson
 THE ROTHSCHILDS—Frederic Morton
 SEX AND THE SINGLE GIRL—Helen Brown

Work consists of what a body is obliged to do, and Play consists of whatever a body is not obliged to do. —Mark Twain

Birmingham Insurance Agency

114 S. Woodward
 Representing:
 AMERICAN GROUP
 GENERAL—SAFECO
 HOME INS. OF NEW YORK
 PRUDENTIAL
 OHIO CASUALTY CO.
 ST. PAUL GROUP
 TRAVELERS
MI 4-2422
 "After We Sell We Serve"

You will find many bargains in The Eccentric Classified Columns.

A SCENIC CORNER SITE in picturesque, rolling Chermwood hosts this spacious brick ranch. There are 3 bedrooms (master 24 ft. long), main bath with tub and stall shower plus a convenient lavatory. "Leisure-time" family room, att. garage, carpets and drapes. **VALUE BUY! \$25,900**

BIRMINGHAM
 345 S. Woodward
 MI 6-7900

Showcase of homes
 HALL & YOUNG INC. REALTORS

BLOOMFIELD
 4114 W. Maple
 MA 6-5900

Behind the Welcome Mat

by CORINNE ABATT

Did you ever stop to think how much you can tell about a community by visiting its food emporiums? These stores give many clues as to the income, background and social status of the folks who live nearby.

At least to me, drab, little run-down stores indicate the same type of community. Likewise, stores which have only the newest, most gleaming, all-American goods signal a section that is still very new and overly homogeneous.

A store with low and medium priced items, some out-of-season delicacies and a sprinkling of foreign and exotic items means a healthy cross section of shoppers. Even the spice racks, a wide assortment or not so, tell a story about the area cooks — whether they are daring or bound by conservative taste standards.

ONE WEEK EARLIER!
MICHIGAN STATE FAIR
 DETROIT
 STATE FAIR ENDS ON LABOR DAY!
 AUG. 24 THROUGH SEPT. 3

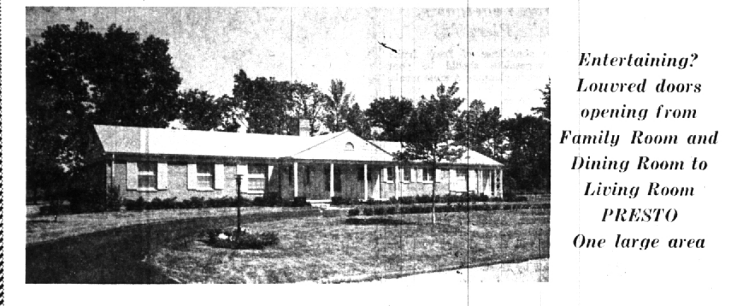
A Beauty Treatment FOR YOUR WALL-TO-WALL CARPETING!

Regular carpet cleaning by Leader's experts restores the beauty and luster of your fine carpeting. It's a treat to your home and health to have Leader's Carpet-KARE method remove grit and soil, mothproofs free, fluffs the pile to new lasting beauty.

48 Years of Quality Service Assures Your Confidence
 Save 20% on Loose Rug Cleaning — Cash & Carry!

Leader
 CARPET CLEANING CO.
 1724 LINDBERGH TV 5-9400

BEAUTIFULLY BLENDED — Gracious Living and Value



In Birmingham

- 4 bedrooms, 3 baths, service quarters
- Studio Living Room
- Separate Dining Room
- Family Room
- Breakfast Space 12 x 12
- Built-In Kitchen
- Small hobby room
- Carpeting

FRED PIERCE INC.
 460 NORTH WOODWARD, BIRMINGHAM, MICH.
 Midwest 7-1414

DO IT NOW!!!

DON'T DELAY—GIVE UP GOLF, BOATING AND BRIDGE FOR A FEW DAYS—THERE IS NO BETTER TIME TO KILL CRABGRASS

The procedure is simple with either spraying or spreading equipment, but the SELECTION OF MATERIALS is of considerable importance.

This is where we come in because the top materials can be found at 850 S. Woodward, and they are:

For Sprayers:—

NOTT'S SUPER ARTOX—\$3.00 for 2000 sq. ft. at temperatures below 80 F.

NOTT'S SUPER ARTOX—\$3.00 for 4000 sq. ft. at temperatures above 80 F.

NOTT'S SPECIAL ARTOX—\$3.75 for the same areas & temperatures—BUT, it also kills broadleaf at the same time.

ORTHO'S CRABGRASS KILLER—\$2.65 for 4000 sq. ft. above 80 F.

FOR SPREADERS:—

STADLER'S VANISH—\$6.50 for 5000 sq. ft., and handles some broadleaved weeds also.

VAUGHAN'S K.O.—\$6.95 for 5000 sq. ft., and handles broadleaved weeds also.

At this point we suggest that you use either DOW'S ZYTRON or AGRICONS PRE-EMERGE in the spring of '62 you probably would have had NO CRABGRASS problem AT THIS TIME.

(IT PAYS TO READ THE ECCENTRIC)

USEFUL INFORMATION:—

VIRGINIA BLUEBELLS (Mertensia) should be divided and moved now—while they are dormant.

BLEEDING HEART (DICENTRA) should be cut off and burned as soon as they become unsightly.

Bargains in pottery, grills, barbecue equipment, statuary, and miscellaneous items are well, they are available.

HOLLYHOCKS should be cut to the ground as soon as they are through blooming. Burn the debris and SPRAY NEW SEEDLINGS with PHALTAN, CAPTAN, or BORDEAUX.

GLADIOLUS, when cut for decoration, should leave a lot of foliage or the corn will not ripen properly.

CABBAGE heads beginning to crack should be bent over to break the root on one side in order to check growth.

WATERING vegetables should be done slowly and thoroughly to prevent washing and to soak the soil 5 to 6 inches deep.

CLEARANCE ITEMS are still available at prices we are embarrassed to quote—because, although they are lovely, interesting, useful, intriguing, etc., they still represent buying errors on our part.

EUTONYMUS—covered with tiny white scales should be soaked with MALATHION or they may die.

McCLELLAN-BALL CO.
 Everything for the Yard and Garden

850 S. WOODWARD, BIRMINGHAM, MICH.
 FREE AREA DELIVERY Midwest 4-4133

IT'S JUST AS PRETTY—

—looking out from the soft toned family room to the shaded yard with its playhouse for the little people — or even from the bay window in the dining room or from the gracious living room — as you will see for yourself on your first visit. The four bedrooms are well spaced and access to the two baths most convenient — separate breakfast room, a very workable kitchen and game room in the basement complete the picture. Best of all — its prime location in Bloomfield Village and price — just \$44,500.



523 Hupp Cross

Lighting your way to better living
BENJAMIN & BISHOP, INC. REALTORS
 259 S. Woodward, Birmingham, Michigan MI 4-3232 — JO 4-5728