



By HARRY O. SMART
KSUOQ

Dr. Earl Weston (WSEXO) enjoys an unusual part in ham radio. Doc keeps in touch with the missionaries all over the world and passes their messages back and forth to family, friends, and churches.

ON JULY 24, he intercepted a message from a missionary in an African leper colony.

The ham on the other end was Rev. Charles Hinsun who was in a bad spot—their main supply vehicle was 50 miles out in the jungle with a broken axle and no replacements were available on the continent.

It was learned that the axle for this particular truck was manufactured by the Eaton Manufacturing Co. Doc put in a call to their plant here in Detroit. Coincidence would have it that Pete Garfield, a Birmingham resident, was the person to whom Doc's call was referred.

AT THIS POINT it was discovered that the number of the axle was incorrect and so a runner had to be sent the 50 miles out and back to get the right part number.

It seems a little paradoxical that it takes two days to get a message 50 miles and yet only a split second to get the same message several thousand miles!

DOC WAS finally able to obtain the right part number and pass it on to Pete who started the wheels in motion to get the axle on its way to Rev. Hinsun. It was then discovered that a new and much stronger axle had been developed since the original was made in 1953. It was suggested that both rear axles should be replaced to prevent a possible breakdown again.

Back on the air went Doc with this bit of information. Back came Rev. Hinsun to say it seemed like a good idea, but their funds were so limited that replacing one axle was going to be a real strain, so they'd better leave it at one and do a little praying for the other one. Back to his trusty phone went Doc to pass the word on to Pete that one axle would have to do.

"SORRY," SAID PETE. "I forgot to tell you, Eaton Manufacturing wants to pick up the tab. Tell Rev. Hinsun his two new axles are being crated and will be sent air freight today." Needless to say, Rev. Hinsun was tickled with the news and no doubt will not soon forget a couple of helpful guys from a remote village in Michigan.

Record another good deed for amateur radio—pretty good for a bunch of wire twisters!

WHILE DOC WAS waiting for



Good Samaritan

After picking up a signal from an African missionary on his set, Dr. Earl Weston, 3655 Forman, Bloomfield Township, arranged with fellow ham Pete Garfield, 881 Kennesaw, Birmingham, for the shipment of needed

truck parts to New Hope Town, one of the world's largest leper colonies. The call was sent by Rev. Charles Hinsun, missionary pilot.

Pete to get the information on the axle. Rev. Hinsun passed on some interesting information about the leper colony.

It is supported by the Assemblies of God Church and houses between six and seven hundred lepers.

With modern methods and drags they are now averaging or "curing" about 90 cases a year. They have 30 missionaries in Liberia and their leper colony has over 100 permanent buildings. The road from the colony to Harbel is 65 miles long and not exactly an expressway. It is rough and rutted and passes through some very rough jungle country.

Let's hope the new axle does a good job, but if they don't WSEXO or some other equally alert ham will contact Rev. Hinsun at his station, ELBA, and new ones will be on the way.

He is the greatest artist who has embodied, in the sum of his works, the greatest number of the greatest ideas.

—John Ruskin

ELLIS INC. SINCE 1945
MODERNIZATION
Family—Activity—Recreation
Rooms & Porches a Specialty.
MI 6-4188
KITCHENS - BATHROOMS
ROOFING - SIDING
Most any alteration
and repairs
FREE ESTIMATES TERMS

U-M Has Music Coming From 2 'Campuses'

There's music in the air this summer, and it's coming from two "universities" of Michigan "campuses."

Some 400 students are attending the Summer Session in Ann Arbor, and about 200 are studying in the university division at the National Basic Camp, Interlochen.

"The Ann Arbor classes are well known," says Dean James B. Wallace of the School of Music, "but I think far fewer persons know that the University is active in teaching at Interlochen, which, perhaps, has become better known as a high school level camp."

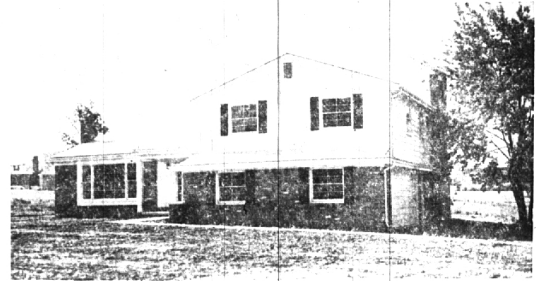
"AT INTERLOCHEN we teach courses in music, drama, art, dance, speech and camp counseling, all under the direction of a faculty and staff of 35 headed by Eugene Trosh.

"In addition, we run the all-state band, orchestra and choir organizations with another staff of 35 led by Orion Dalley."

The University also is advising and consulting with Joseph E. Maddy, camp founder and University of Michigan professor emeritus of music, on the establishment of the Interlochen Arts Academy.

HUGO HILLS

Bloomfield Hills
(Opdyke at Square Lake Rd.)

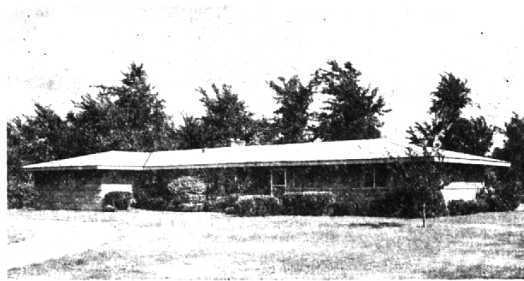


4 large bedrooms
2 1/2 baths
Basement
Gas heat
Range
Oven
Dishwasher
Disposal

\$32,900

Bloomfield Real Estate Co.
MI 6-6500

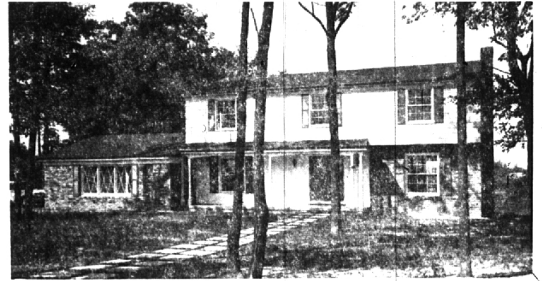
BLOOMFIELD CALIFORNIA RANCH



3 bedrooms and library. 2 full baths, heated garage and covered patio. Beautiful landscaped lot. Reduced price for quick sale.

MI 6-2400

BEAUTIFUL PINE LAKE



Exceptional opportunity, one of the last of Lake front sites. New 5 bedroom, 2 1/2 bath Colonial with modern kitchen, paneled family room, 2 fireplaces, tall trees. Bloomfield Hills schools and hundreds of feet of safe sandy beach. A very special buy at only \$44,900.00.

JO 4-5644

CHARLES J.

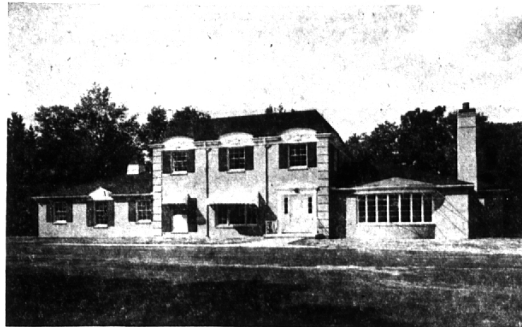
VAN HORN



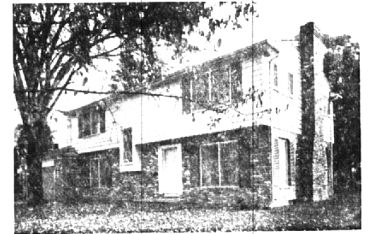
BRICK AND FRAME RANCH. This convenient home has 3 bedrooms . . . screened porch . . . 2 car garage . . . Decorators' interior. Finest offering in its class. Only 18,250.



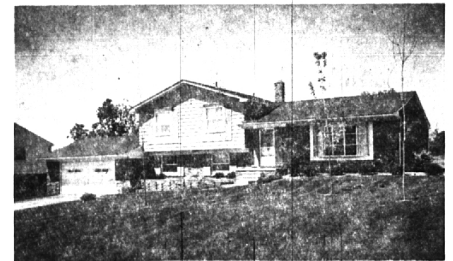
REAL SHARP . . . 3-bedroom brick ranch. High on a Ridge in Hickory Heights. Landscaped for easy maintenance. All tacked down carpeting. Sewer in. Just 28,500



PROPORTIONED TO PERFECTION ON LOVELY ACRE SETTING. Styled for gracious living . . . 5 bedrooms . . . 4 baths. Master suite first level. 3 car garage. Hot water heating and humidifying system. 9 foot ceilings. 87,000.



4 BEDROOM COLONIAL CONVENIENTLY LOCATED . . . Features
. . . Library . . . spacious living room . . . Huge storage closet
. . . Built-in intercom . . . range and oven. Newly decorated.
34,900.



DELUXE TRI-LEVEL IN EXQUISITE CONDITION. Beautiful wool carpets thru-out. The last word in kitchens. 4 bedrooms . . . 3 baths. Attractively landscaped. 35,500.

Weir, Manuel & Snyder, Inc.

298 South Woodward
Birmingham, Michigan Realtors

Phones: Birmingham 644-6300
From Detroit 566-2323