

BARE SPOTS IN YOUR GARDEN?

Don't Despair

PLANT OUR POTTED ANNUALS

3 for \$1.00
1 Doz. for \$3.50

- AGERATUM
- MARIGOLDS
- PETUNIA
- VERBENAS

These plants are growing in 5-inch pots under our special culture. You can plant anytime without any setback.

"Quality has no Substitute"

THEISEN'S GARDEN MART

3826 N. Woodward, Royal Oak LI 9-4422
Hours 9 to 7:30 Daily — Sunday 9:30 to 1



BRIDGE in BIRMINGHAM

By BUD MAYBAM
Southern Michigan
Bridge Association

At the recent Southern Michigan Bridge Association's championship games, our very interesting hand for today was played.

It is one of those hands in which points mean nothing. North and South had a total of nine high card points.

Henry Georgia of our Birmingham area could see the advantage of this perfect fit, and made the most of it.

East and West vulnerable.

NORTH
▲ A 10 7 6 4
3 2 2
▲ K J 10 9 8
▲ A Q 9 4

EAST (dealer)
▲ 5
3 2
A K J 10 9 8
▲ A Q 9 4

WEST
▲ K Q
▲ K Q 7 5
Q 10 5
▲ K J 10 2

SOUTH (Henry Georgia)
▲ J 9 8 3 2
A 10 9 8 6 4
▲ 6

The bidding:
East North West South
1 pass 1 1/2 1
3 3 4 4
pass pass idle all pass
Opening lead: 8

After winning the opening lead with the King of Diamonds, East continued the suit and Hank Georgia ruffed. He then led his club singleton and no defense could beat the contract on a cross-ruff.

AT MOST TABLES South had hoped that East and West might get into a heart contract which he

could double, so passed the one heart bid. East and West arrived at a three-no-trump contract, making five.

Hank Georgia knew that he could double, so passed the one heart bid. East and West arrived at a three-no-trump contract, making five.

Painter

(Continued from 1-D)

good painting is a greater accomplishment."

MENTION OF "abstract art" drew strong words. "It's less of an art and more of a decoration," he said. "People can't identify with it. It's for fun and is done quickly. It's the commercial art of the day."

Coppin doesn't think people mind sitting for their portraits at all. When he had his studio in the Scarab Club in Detroit, he used to have a mirror behind him so the "sitters" could watch the painting progress.

They were particularly interested during the first few sittings in which he "blocks out" the canvas, he said.

HE ALSO puts on records for them—music and plays, like Shaw's "Don Juan in Hell"—and talks to them, if they want.

Coppin lives and works at 4301 Echo Road, Bloomfield Hills. In the comfortable wood-paneled and amply book-shelved living room of the Coppin home are portraits of his 12-year-old son, Turry (over the fireplace), and his extremely attractive and charming wife, Sibi.

Upstairs in the "remodeled stable" is Coppin's studio—a high-ceilinged, spacious room with dark, wooden floors, a bevy of paintings on the walls, and partially furnished by pieces of heavy, beautifully finished Victorian furniture.

BECAUSE the structure is built into the side of a hill, Coppin also has his own patio which is sided by a row of spruce trees.

He has been a Bloomfield Hills resident for 12 years.

Coppin came to Detroit to study art from Stratford, Ontario, seat of the annual Shakespearean festivals—a fact which goes a long way in explaining his interest in theater. One of his paintings hangs in the festival theater there.

After coming to Detroit, he studied at the John P. Wicker School of Art, which he claims is probably the finest art school Detroit has seen.

He also had his studio in the Scarab Club for many years, as indicated earlier.

PORTRAITS WHICH Coppin has done include the late Gen. William S. Knudsen, the late Henry Ford, Sir Alec Guinness and the official portraits of Michigan Governors Murray Van Wagoner, Harry F. Kelly, Kim Sigler and G. Mennen Williams.

He also did three murals for the Detroit Gas Co. and is represented in the permanent collection of the Detroit Institute of Arts.

Coppin is also art director for "Motor News," which is published monthly by the Michigan AAA.

not be hurt at a one spade contract due to the vulnerability. He didn't know it would turn out so well, but had everything to gain and nothing to lose.

It is interesting to note that the North and South pair that came in second here were the one that had doubled five diamonds. North had led his singleton heart, a heart return that was ruffed and a spade trick.

RECENT WINNERS in Birmingham tournaments are Dr. Patrick and Don Stephenson; Phyllis and Jack Malstrom; C. Armstrong and Shirley and Gerry Fanger.

Show

(Continued from 1-D)

It has flagrant strips emerging like antennae from each side of a triangular conifer box.

"GOA I" by Warner, a brass wall relief three and one-half feet

C. Worley; George Albroton III and Buck Becker; Mr. & Mrs. Robert M. and Mrs. Harold Sandel; Hank Georgia and J. Northing; O. Szwarcwald and L. Benjamin; C. Coffin and C. Tyson; A. G. Harley; Barbra Strauss and Shirley and Gerry Fanger.

high, is his most original work and crafts in the 1961-1962 Festival Award Winners Show, however, on a more sculptural role against a responsibly h-o-h wood back-ground. The brushed, wavy-hair texture on some of his pieces looks intrusive.

EMIL WEDDIGES oil paintings are slashed with broad, straight strokes dividing his canvases. His abstract painting, "Mereose" in its dark browns and blues is the most vital of his works. The black and white lines here are not arbitrary and become part of the color.

Tedlford displays are based on the mystique of colors which go together. The painting, sculpture

82 YEARS EXPERIENCE

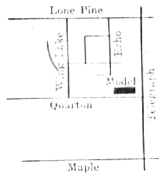
RESIDENTIAL AND COMMERCIAL ROOFERS



551 E. VERNOR HWY., DET. WO. 2-0512

THE ULTIMATE

- 2400 sq. ft. Basement Ranch
- Walking Distance to Schools
- Large Studio Family Room
- Perfect Traffic Pattern
- Beautiful Living Room
- Unusual Curved Fireplace
- Laundry Room on First Floor
- Spacious Master Suite
- Exceptional Kitchen
- Soeided Lawn
- Wide Asphalt Drive
- OPEN 1 to 9 P.M.

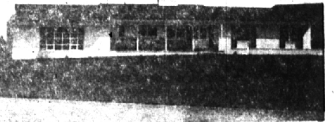


PRICE \$43,850

HOWARD T. MI 6-1234



DEVELOPMENTS JO 6-3121



- 28 Other Models — Open Daily
- Models of Bloomfield
- Bloomfield Glens
- Penbady Orchards
- Bloomfield Hills Estates

ON THE FAIRWAY



FOREST LAKE COUNTRY CLUB

Custom Built brick and fieldstone Bi-Level with full Basement and many quality EXTRAS.

- 2 Bedrooms, 2 1/2 Baths.
- Large Living room.
- Separate Dining room.
- Family room.
- Tiled Rec room, too.
- 2 fireplaces.
- Delightful Country Kitchen.
- 1/2 Acre site. All large rooms. Circle drive. Bloomfield Hills address. ALL for \$37,500.

IN THE CITY



4 BEDROOM CAPE COD

Excellent floor plan with center entry. Full Basement.

- Living room with bay and fireplace.
- Dining room separate.
- Pine paneled Rec room.
- 2 full baths.
- Screened & Glazed Porch.
- 2-car Garage.
- Charming home on beautiful lot with mature trees.
- LOOK AT PRICE! \$22,500.

COUNTRY SPACE



ACRE SITE—LOVELY TREES

Close to shopping area. Bloomfield Hills Schools. Less than mile to Marion & Brother Rice.

- Quality construction and Details.
- MANY PLUS FEATURES.
- 3 Bedrooms, 2 1/2 Baths.
- First floor Family room opens to intriguing free-form deck. Oak paneled, parquet floor.
- Full Basement with Rec room, too.
- 3 Fireplaces (2 stone, 1 brick).
- Kitchen with everything.
- MUST BE SEEN. \$42,500.

or

Wherever you want to live—

SEE US—We are now affiliated with the largest inter-continental referral system in the entire United States. Reputable—Reliable—Resourceful American Institute of Marketing Systems, Inc.



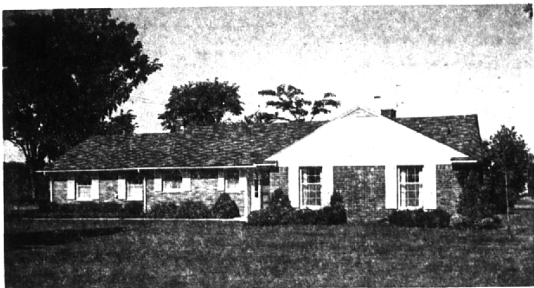
SNYDER KINNEY & BENNETT

INC. Realtors

239 S. Woodward, Birmingham MI 4-7000
32740 Franklin, Franklin MA 6-9600

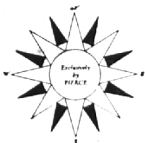
Birmingham Eccentric Want Ads Get Results — MI 4-1100

This CASTLE is built for



Living and Living and Living and Living and Living and LIVING!

- Birmingham School
- FOUR BEDROOMS, 1 1/2 baths
- Large Living Room with Fireplace
- Library
- Breakfast space 8 x 8 in Kitchen
- Carpeting and Draperies
- Beautiful Lawn with Trees



FRED PIERCE INC.
460 NORTH WOODWARD, BIRMINGHAM, MICH.
Midwest 7-1414