



HARRY O. SMART  
KSTQK

The choice of an antenna for a ham station involves a number of considerations. Prior to the final selection it is a good idea to check with the lady of the house to see if she will permit the installation. If she opposes that monstrosity you have selected it might be a wise move to consider something else.

Some wives are broadminded about this sort of thing and some are not. Not to shatter any illusions or anything, but in most of what you may have read, that's her castle your defacing!

FROM A PURELY technical standpoint, there are five general types of antennas available. They range in cost from two or three dollars to two or three hundred dollars.

The beginner frequently starts out with a good long wire or dipole antenna. The long wire will probably require some where in the neighborhood of 135 feet of space, whereas the dipole can be as short as 70 feet. The amount of room available makes up one of the important considerations for this type of structure.

This type of antenna is a good general purpose unit, especially for receiving. It is semi-directional in that the strongest signals will be heard coming from sections perpendicular to the antenna.

It has no "front to back ratio" so that signals will be of equal strength from either side of it. This type of antenna is the least expensive and lends to home construction very nicely.

A VERTICLE antenna is good for some applications because it is inexpensive, simple to install, and not unsightly. It has been said that this type of antenna is equally poor in all directions and many ham subscribers to this theory. Properly installed and used within its limitations the verticle can be a satisfactory arrangement.

It can be installed on the ground, the roof of the house, or the roof of the garage and is hardly noticeable from the street. In those areas where antennas of any kind are forbidden on roof-tops, this is the only answer.

THE MOST WIDELY used antenna in amateur service is the beam. This unit operates electrically much like a beam of light in that it beams signals in a single direction. Normally it will be rotatable with an electric motor in order that it can be pointed in the direction of interest. A commercial beam can be purchased for as little as \$70.00.

A beam must be up in the air to be effective and so either a mast on the roof of the house or a tower is a must. The higher in the air the better. Thirty feet would be a good minimum.

Beams are more commonly used in the frequency ranges from 20 meters upward although some beams are designed for the 40 meter band. The amateur hand beams look very much like the common type of TV antenna but the arms are considerably longer.

COMING INTO its own lately is the quad antenna. This is actually a quadrangle shaped affair and is probably the most unsightly type available. From an operational standpoint, however, it is one of the best, if not the very best.

**A Beauty Treatment FOR YOUR WALL-TO-WALL CARPETING!**



Regular carpet cleaning by Leader's experts restores the beauty and luxury of your fine carpeting. It's a treat to your home and health to have Leader's Carpet-Clean method remove dirt and soil, moldspores, and the pile to new looking beauty.

40 Years of Quality Service Assures Your Confidence  
Save 20% on Loose Rug Cleaning — Cash & Carry!

**FREE!** With every carpet cleaning, we'll give you a complimentary copy of our new booklet, "How to Choose the Best Carpeting for Your Home." This booklet contains the latest information on the many new carpeting materials available today. It's yours for the asking. Write today for your free copy.

**Leader**  
CARPET CLEANING CO.  
1700 LINWOOD, T.V. 3-8900

## 2 Productions End Season At Cranbrook

The Cranbrook Summer Theatre School will wind up its 21st season with a comedy, "Out of the Frying Pan," Friday and Saturday, and a Bret Harte story, "Maybe It's Love," set to music by Carl G. Womberger, Director of the school, Tuesday and Wednesday.

"Out of the Frying Pan," by Francis Swan, is the story of some would-be stage folk who rent an apartment above one belonging to a Broadway producer. The director is William Hollingsworth, with Miss Candy Ceder assisting.

THE COMIC melodrama, "Maybe It's Love," concerns the affairs of a California mountain girl who is in love with a handsome school teacher. The girl's father, after many vain attempts, strikes gold, but a pair of sharpers try to get it away from him by means fair or foul. They are driven eventually to murder.

Meanwhile, a traveling variety show settles in the small mining town enlivening matters until all is straightened out by 8 p.m. Richard Bagg, who is also drama director at Scabohm High School, is director of the play, with Frank

Rowland and Linda Zimmerman assisting.

RESIDENTS of the Birmingham area who are in "Out of the Frying Pan" include Bob Ross, Kate Klarr, Lynn Scarborough, Donna Bell, Jill Bouton, Christine Dodrill, Sue Wilson, Mary Sue Wilson, Wendy Clark, Sue Gervais and Richard Gibson.

Appearing in "Maybe It's Love" are Anne Douglas, Alice Colombo, Marie Exner, Ann d'Hyvere, Cynthia Gray, Linda Allen, Frank Green, Robert Porter, Lynne Lawson, Richard Gibson, Judie Lane, Jan Detweiler, Ann Beaubien and Marilyn Spaulding.

## Girls

(Continued from 1-D)

rehearsal on the White House lawn in a "shell" bait especially for the occasion.

At 10:30 a.m., they will dance "The Emperor's Waltz" by Strauss before President and Mrs. Kennedy and an invited audience of 1800 people. All 12 dancers will wear pink, waist-length dresses.

AFTER THE CONCERT, they will have lunch with President and Mrs. Kennedy.

The afternoon will be spent touring Washington by bus. The group will board their planes at 6 p.m. to return to Traverse City by 8 p.m.

In case of rain on Monday, the concert will be given on Tuesday at 10:30 a.m.

## Potpourri

(Continued from 1-D)

Creativity sometimes takes the form of revolt. The "Young Turks" or "The Angry Young Men" (or a facsimile) reappear through history usually in a young movement dissatisfied with some facet of the existing order and eager to replace it with a version of their own.

OUT OF the reaction and controversy that ensues in the clash of the old versus the new, some portion of the new is frequently incorporated and progress may result.

Or creativity may be peaceable. Conditions within certain cities at certain times in history have been receptive to growth and new ideas. Important changes have come about easily without upheaval.

It is possible for society to evolve these conditions conducive to progress without the need for revolt.

WE ARE EVOLVING these kinds of conditions here. The extraordinary growth in artistic creativity in this area involves new people, is resulting in new works and is bringing about new thinking.

There is still no guarantee that the presence of creativity in itself will automatically result in progress or great works. But the presence of creativity does create the climate in which progress can be made.

It is, to me, the sign of a healthy society that is making things happen, not letting things happen. We are creating the kind of atmosphere in which change is possible and greatness may be appreciated if not produced.

It is a credit to the city and to the residents that creativity exists here, that it is encouraged and honored officially and individually.

## Behind the Welcome Mat

by CORINNE ABAT

About a year ago, neighbor Joan Giblin quoted a verse that our family has found both useful and enjoyable. I wanted to find the source and pass it on to the column readers. All Mrs. Giblin can tell me about the verse is that it was given to her by a teaching nun at a Chicago school.

I have not been able to find out anything about the verse and would welcome hearing if any readers

know something about it. Patience is a virtue. Possess it if you can. Found seldom in a woman. And never in a man.

The first line is listed in a first line index at our Birmingham Library. The source book given for the entire verse is the "Oxford Book of Nursery Rhymes," 1955 Edition. This is located at the Detroit Library, but the last three

lines are not the same.

FROM THE department of miscellaneous information: Even in ancient Egypt when both civilization and the practice of medicine were still infants, physicians were specialists. The pyramid-building Pharaohs had court "head specialists," eye specialists and internal specialists.

I'll wager that even then there were Egyptians who complained about having to trot from one specialist to another to have various ailments checked and bemoaned the lack physicians prepared to diagnose all ills.

The reason for specialization

August 2, 1962 THE BIRMINGHAM (MICH.) ECCENTRIC 3-D

among the ancients was that there was too much knowledge for any one doctor to absorb all of it.

GRIFE OF the week: People who have long or odd sounding names and m u m b l e when introducing themselves.

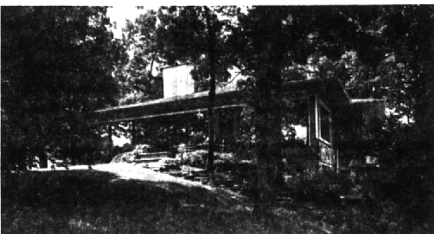
It prevents much embarrassment if a stranger with a tricky name will say it slowly, syllable by syllable or even spell it, rhyme it with a familiar word or give some background about it.

An odd name is a distinguishing characteristic, but only if it can be properly understood.

**ELLIS INC. SINCE 1945**  
**MODERNIZATION**  
Family—Activity—Recreation Rooms & Porches a Specialty.  
**MI 6-4188**  
**KITCHENS - BATHROOMS ROOFING - SIDING**  
Most any alteration and repairs  
**FREE ESTIMATES TERMS**

# LOWER LONG LAKE!

## THE HOME



Dramatic window walls and practical Bi Level design makes this an outstanding home. It has three large bedrooms, library, a lovely large Family Room, massive fireplaces in Living and Family Rooms. This unusual and delightful home is in the Bloomfield Hills school district. Carpeting and draperies included at \$69,000.

## THE VIEW



Because of its superb location on a peninsula, the views from all rooms are simply spectacular. Why not see for yourself? Call now and we'll be pleased to make an appointment.

Birmingham's Senior Realtor

MAX

**BROOCK** INC.

300 S. WOODWARD

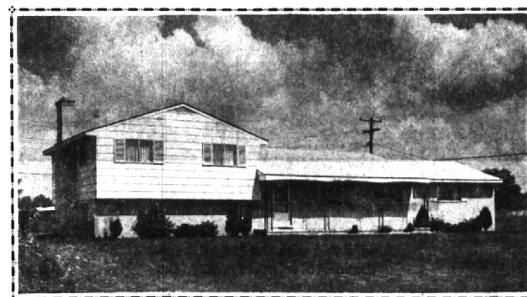
MI 4-6700

## Bloomfield Hills School - Family Room



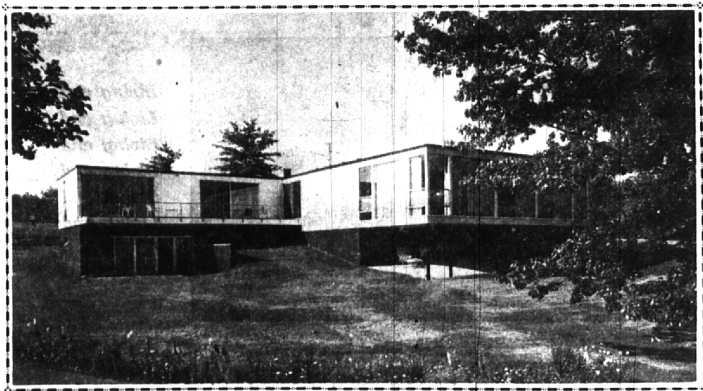
Well-maintained ranch on superb 130-ft. site, located in Bloomfield Hills school system. Nice full basement, 2 1/2 car att. garage, and a pretty kitchen with built-in appliances. Gas heat. Covered porch. Everything complete in this 3-year-old home. Priced to sell fast at \$23,900.

## 132 Ft. Site - 2100 Square Feet



Exceptional room sizes in this well maintained, 3 year old, Tri-Level. Separate dining, big Family Room, and 2 full baths. Lovely 132 ft. site near Harlan School, gas heat, and 2 1/2 car att. gar. Nicely carpeted—Call TODAY. \$29,500.

## Absolutely Superb Lake Front 2 Acre Estate (Bloomfield Hills) Yamasaki Designed



Magnificent beyond description is this 2 year old Executive Estate on Vhay Lake. 4 superb bedrooms, 3 1/2 baths, and PANORAMIC 40x18 ft. living room, and dramatic "BANQUET" Room for formal dining. The finest in PANELING used throughout the Family Room and Activities Room. Extremely functional kitchen, far in advance of present day conceptions. 4,000 square feet of comfortable living that must be seen with your own eyes. Call us TODAY.

**CHAMBERLAIN CO.**  
**REALTORS**

JO 4-6000 975 S. HUNTER BLVD., BIRMINGHAM, MICHIGAN MI 6-6000