

Oakland GOP Names Judge Training Chief

J. Emmet Judge, 2147 Yarmouth, Birmingham, has been appointed training chief of the Oakland County Republican Retail, Industrial and Professional Campaign, according to Charles L. Lyle, GOP county chairman.

Judge, as training chief, will be responsible for the training of the persons assigned to the special campaign to recruit financial support from retailers, industrialists and professional people from all over Oakland County.

Product planning manager of the Lincoln-Mercury Division of the Ford Motor Co., Judge, 38, was born in Grafton, N. D., and graduated from the University of North Dakota with an engineering degree.

FOLLOWING graduation, he

Scouts to Hold Old-Fashioned Weekend Campout

Real old-fashioned Scout camping will be the order of the day for the Northridge District fall Camporee, scheduled for Oct. 5, 6 and 7, at the 1450-acre D-Bar-O Scout Ranch near Metamora.

A remote section of the area has been selected as the camp site, and Scouts will have to hike in about half a mile with all food and equipment. Cooking will be done over open fires, and troops will bed down in shelter tents.

The "Fit for Tomorrow" Camporee is open to all Scout Troops in the Northridge District. It is expected that between 400 and 600 Scouts will take part. Units will start arriving at 3:30 P.M., Oct. 5. The tentative program for Sat. and Sun. includes field events in logging, Squatters, physical fitness and pioneering, and an all-unit campfire with entertainment on Saturday night.

Religious services will be held on Sunday, and the Camporee will end at 3 p.m. with the awarding of special individual participation patches and patrol certificates for proficiency in the various events.

General Chairman for the Camporee is William Hutton, Royal Oak, with Fred Pieper, Royal Oak, as vice chairman for program. Other committee members and assignments are: troop participation, George Lockwood, Royal Oak; events, Edward E. Shoop, Clawson; publicity, Bartram D. Lewis, Pleasant Ridge; judging and awards, George Wells, Huntington Woods; special guests, Jack Gibbons, Ferndale; campmaster, Paul Webb, Royal Oak; and facilities, William J. Hopper, Royal Oak.

Primary

(Continued from 1-A)

ence A. Reid and John H. Stahl, now a state senator.

Republicans seeking the state senate nomination are Robert J. Haber, Richard D. Kahn and Farrell E. Roberts, the incumbent. Incumbent Henry M. Hogan, Jr., is unopposed for Republican nomination for state representative from the third legislative district, which includes Birmingham, Bloomfield Hills, Troy, Bloomfield and West Bloomfield townships and other areas to the west.

INCUMBENT RAYMOND L. Baker is challenged by Terrence E. Nagle for the GOP nomination for state representative from the fourth legislative district. It includes Beverly Hills, Southfield, Lathrup and the villages and townships immediately to the west.

Incumbent Daniel W. Barry has opposition from Arthur C. Becker, for the GOP nomination for drain commissioner.

County Republicans facing no opposition are incumbents George F. Taylor for prosecutor; Daniel T. Murphy, Jr., for clerk-register of deeds; Frank Irons, sheriff; Charles A. Sparks, treasurer; and Ralph A. Main, surveyor.

DEMOCRAT T. John Lesinski has no opposition in his party for the lieutenant governor nomination.

Neil Staebler, long influential in the state Democratic Party, seeks nomination for congressman-at-large.

Two other Democrats, George J. Fuikerson and George E. Lennox, seek nomination for congressman from the 18th district.

Democrat Leland H. Smith has no opposition for the state senator nomination.

Likewise, John F. Foley is unopposed for state representative.

S. JEROME Bronson is the only Democrat seeking the prosecuting attorney post, but three Democrats would like to be sheriff—Homer Hight, Kenneth G. Hirt and William A. Smith.

Daniel T. Berry and Roy J. Russell vie for Democratic nomination for drain commissioner.

Unopposed for Democratic nomination are Davis S. Lees for county clerk-register of deeds; Betty H. McVay, treasurer; and Stanley F. Dunn, surveyor.

he served a tour of duty with the Federal Government and was a consulting engineer.

From 1942 to 1947 he was associated with Wallace Clark and Co., a firm of professional management consultants.

Since joining the Ford Motor Co. he has served as Manager of Financial Analysis and Assistant General Purchasing Agent of the Lincoln-Mercury Division. In addition, he has also been Marketing Manager for Mercury.

Phone Boundaries Shift in Troy; Rates to Change

About 300 Troy residents in an area bounded by Seneca Lake Road, John R., 19 Mile Road and Adams will receive a reduction in phone rates as they are shifted next year from the Ulysses to the Trojan telephone exchange.

Another 133 households in the Northern Troy area will have to pay more.

The Michigan Public Service

Commission notified Michigan Bell Telephone Co. and Troy officials Monday that it had approved the shift of telephone exchange boundaries in the five-square-mile area in the northern part of the city.

The difference in rates breaks down to a reduction of about \$12 per year per household, or about \$5.50 per month per bill.

The other 133 households will

have to pay about \$5.26 per year per household more, an increase of about 44 cents per month.

Michigan Bell estimates it will lose \$13,500 per year, balancing reductions (about \$14,000) against increases (about \$700).

In addition, the change will involve another \$11,000 in capital costs, the company said, and take a year to complete.

Kellys Start Suit Against Zoning on Lathrup Property

Lathrup landowners and real estate brokers, Mr. and Mrs. Charles D. Kelly, have filed suit in Circuit Court asking that zoning restrictions on land they own be declared "unconstitutional, unreasonable and confiscatory."

City Attorney Everett F. Hayes, said Monday he has not had a

chance to study the Kelly petition, which he must answer in court Aug. 9.

THE LAND involved in the suit is in four lots on the fronts on Southfield, 11 Mile Road, 12 Mile Road, and Evergreen. Most of it is vacant and is zoned single family residential, part of it commercial, part of it, office.


Two weeks ago the Lathrup City Council considered rejoining a portion of the land named in the suit from residential to office. The area included both sides of Southfield

THE BHAM ECCENTRIC Page 7-A August 2, 1962

for five blocks between Coral Gables and Santa Ana.

KELLY SAID such action would not solve the problem.

"Some of the land might interest someone who wants to put up one or two offices, but not all of it. That's what we're objecting to—having all these areas tied up in one special thing," he said.



Wrigley

855 Hunter Blvd., Birmingham
1855 Woodward at 14 Mile Road
Tel-Huron Center, Pontiac
North Hill Plaza, Rochester
Telegraph & Maple
Southfield at 13 Mile Road

50
Free
Stamps

VALUABLE WRIGLEY COUPON

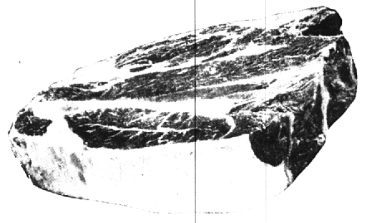
50 EXTRA GOLD BELL STAMPS

With This Coupon and \$5.00 Purchase Except Beer, Wine, Tobacco Expires Saturday, Aug. 4.

BLUE RIBBON FARMS BEEF

STEAK SALE

<p>SWISS Center Blade Chuck Cuts</p> <p>69¢</p>	<p>RIB 7-Inch Cuts</p> <p>89¢</p>	<p>CUBE Boneless Fry or Broil</p> <p>99¢</p>
---	---	--



<p>SPARE RIBS</p>	<p>Country Style Loaded With Meat</p>	<p>43¢ lb.</p>
<p>PORK ROAST</p>	<p>Lean Boston Butt Practically Boneless</p>	<p>43¢ lb.</p>
<p>SMOKED HAM SLICES</p>	<p>Center Cuts</p>	<p>79¢ lb.</p>
<p>LAKE PERCH FILLETS</p>	<p>Fresh Lake Erie Boneless Pan Ready</p>	<p>55¢ lb.</p>

BLUE RIBBON FARMS

Chuck Roast

Pot Roast Cuts

49¢ lb.

HILLS BROS

SAVE 10c

COFFEE

1-lb. Can With Coupon

59¢

VALUABLE WRIGLEY COUPON

SAVE WITH THIS COUPON

Hills Bros. Coffee 1-lb. Can **59¢**

Coupon Good thru Saturday, Aug. 4. Limit One Coupon Per Customer.

DARTMOUTH or TOP FROST Vanilla, Chocolate, Neapolitan

SAVE 10c

ICE CREAM

Half Gal. With Coupon

49¢

VALUABLE WRIGLEY COUPON

SAVE WITH THIS COUPON

Dartmouth or Top Frost Van. Choc. Gal. Neap. **49¢**

Coupon Good thru Saturday, Aug. 4. Limit One Coupon Per Customer.

Stokely Sale

Whole Kernel or Cream Style

CORN 6 303 Cans \$1

<p>Stokely Sweet Peas</p>	<p>Mixed Sizes</p>	<p>5 303 Cans 1 00</p>
<p>Stokely Tomato Calsup</p>	<p>6 14-oz. Bottles 1 00</p>	<p>4 303 Cans 89¢</p>
<p>Stokely's Finest Tomatoes</p>	<p>4 303 Cans 89¢</p>	<p>8 1-lb. Cans 1 00</p>
<p>Stokely Fruit Cocktail</p>		
<p>Van Camp's Pork & Beans</p>		

<p>Elna Salad Dressing 9-oz. Jar 29¢</p>	<p>Welch's Grape Juice 3 24-oz. Bottles 1 00</p>	<p>Pure Vegetable Shortening Snowdrift Special Label 3-lb. Can 69¢</p>
<p>Wrigley Creamed Cottage Cheese 1-lb. Ctn. 19¢</p>	<p>Mel-O-Crust Sliced Vienna Bread 16-oz. Loaf 17¢</p>	<p>H.C. Grape or Orange Drink 3 46-oz. Cans 1 00</p>

CALIFORNIA U.S. No. 1

Seedless Grapes

lb. **19¢**

<p>VALUABLE WRIGLEY COUPON</p> <p>50 Extra GOLD BELL STAMPS</p> <p>With This Coupon and Purchase of \$1.00 or More of Fresh Produce Expires Saturday, August 4</p>	<p>VALUABLE WRIGLEY COUPON</p> <p>150 Extra GOLD BELL STAMPS</p> <p>With This Coupon and Purchase of A 4 Piece Place Setting Old Curiosity Shop Dinnerware Expires Saturday, August 4</p>	<p>VALUABLE WRIGLEY COUPON</p> <p>50 Extra GOLD BELL STAMPS</p> <p>With This Coupon and Purchase of One 3 1/2-lb. Jar Elna Strawberry Preserves Expires Saturday, August 4</p>	<p>VALUABLE WRIGLEY COUPON</p> <p>50 Extra GOLD BELL STAMPS</p> <p>With This Coupon and Purchase of 10-lb. Bag Topco Charcoal Briquettes Expires Saturday, August 4</p>
---	--	---	--

GET FINER GIFTS FASTER WITH GOLD BELL GIFT STAMPS