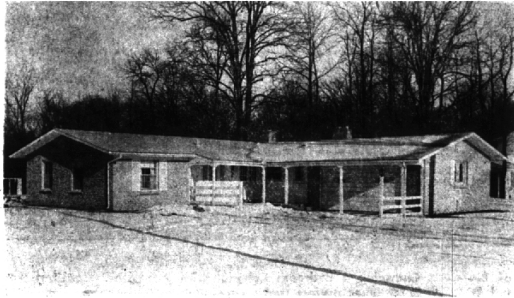


Chamberlain's TRADING POST

REAL SAVINGS TO YOUR FAMILY!

Pictured below are 2 homes taken in under the Chamberlain Guaranteed Sales Plan. Homes taken in under this plan are representative of the finest market offerings.

You owe it to your family to NOT miss seeing these exceptional values.



4 BEDROOMS — 2½ TILED BATHS

Stately trees surround this completely carpeted 3-year-old home. Fireplaces in the Family Room and Dramatic Living Room. Partial basement, gas heat, and Hotpoint "Pace-setting" kitchen. Everything imaginable for true luxury. Priced to sell \$28,900.



PANELED FAMILY ROOM — BEVERLY HILLS

A PANELED Family Room is just one of the many plus features in this 3-bedroom brick and aluminum sided ranch home. The cozy living room has an interesting wood-burning fireplace, and the large dining ell accommodates easily your dining room furniture. Patio, fenced yard, and attached plastered garage. Truly an unusual offering for just \$2,200 down including costs.

CHAMBERLAIN CO. REALTORS

JO 4-6000 975 S. HUNTER BLVD., BIRMINGHAM, MICHIGAN MI 6-6000

Many Factors Play Part In Decor Plan

When you are selecting colors for your home, you'll find there's more to the task than just choosing one or two hues that strike your fancy. Many factors should enter into your color choice.

Light and exposure of a room are others. Whether a room has a northern or southern exposure is no longer as important as it once was, since most homes now are heated evenly throughout and many people keep their draperies drawn even in the daytime.

The amount of light present may necessitate the use of lighter values. More light is required to illuminate a dark surface. The type and amount of artificial lighting also affects colors."

CONSIDER the use for which the room is designed. For example, purple, a color symbolic of royalty and dignity, would not be suitable for a child's playroom. Bright colors stimulate activity, while grayed colors tend to be more restful.

The size and shape, height of ceiling, unattractive features, and articles to be kept in a room may influence your color choice. You will want to choose colors that look well with the furniture to be used. You may want to make the ceiling appear higher by using a light color or lower by using a dark color.

The personality and age of your family—and the amount of money you have to spend—will also affect your color choices.

HOW DO you get started on creating a color plan for your home?

Don't follow fads. Begin with a favorite color. You may want to stick to a theme—Oriental, Early American, or even a season. Perhaps you can build a color scheme around something you own—a piece of furniture or a work of art. You may want to include something with a pattern, such as draperies or a picture.

Hours of Pleasure May Be Enjoyed In Summer House

A garden shelter adds beauty and greater utility to most gardens, landscape architects point out.

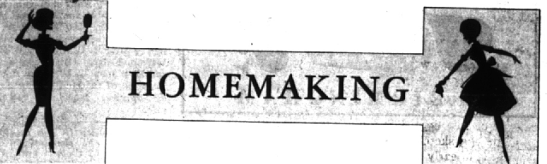
A retreat, hidden away in the trees, takes on charm and interest if it is topped with a simply-designed sloping roof. The roof defines the lounging area, even if a wood deck forms the floor.

What most people fail to realize, one landscape expert points out, is that garden structures must be planned so that they are complete elements within a yard.

SOME TIME, when you are walking in your garden, one expert said, try and visualize what buildings you would like which would add to your enjoyment.

You will find that in most cases a simple shelter, or a roof or pergola will provide a sunshade in summer and some shelter in case of rain.

THESE WOOD structures, whether pergolas, simple roof shelters with no sides, or walkways with supporting posts, or wood decks with roof will add depth and character to your garden.



HOMEMAKING



Sister Team

Big sister Kim, 11, gives little Kay Kelter, 3, a helping hand with her Easter finery. The two expect to star in this year's fashion parade in Franklin and the "Town that Time Forgot!" should have another nice memory to tuck away in its old-fashioned album. The girls are the daughters of Mr. and Mrs. Ted Kelter, 30875 Franklin Road.

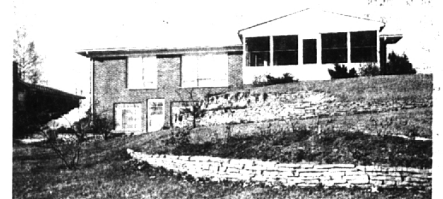
Appeal Plus



WOODED, park-like setting
Just an easy walk from schools
Beamed ceiling living room
3 nice bedrooms—1½ baths
20 foot family room

Big Hobby-utility room
Spacious kitchen with built-ins
Carpets and drapes
Large mortgage may be assumed
\$26,500.

Lakefront



Easy-living Bi-level Ranch
Glass-wall, lake view living room
with beamed ceiling
3 excellent bedrooms
Airy, screened summer porch

Huge lower level family room
2 fireplaces—myriad built-ins
Nicely landscaped—sprinkler system
Carpeting and drapes
\$39,500

HALL & YOUNG INC.

REALTORS

BIRMINGHAM OFFICE
345 S. Woodward MI 6-7900

BLOOMFIELD OFFICE
4114 W. Maple MA 6-5900

INTER-CITY REAL ESTATE
REFERRAL SERVICE, INC.

from cities across America
buyers for Birmingham
& Bloomfield Homes



CHARTER
MEMBER



BIRMINGHAM IN THE COUNTRY

Surrounded by tall trees, this rambling ranch house is close to near-by schools and shopping. The interior is tastefully decorated. 3 bedrooms and 2 baths, a large family room with wood-burning fireplace and a huge screened porch for those warm summer evening "cook-outs."

Complete with professional landscaping at \$33,500.



HIGH ON A HILL OVERLOOKING WALNUT LAKE

Here is a 5 bedroom, 4 bath home built on the side of a hill with a view of Walnut Lake. It is of superior construction, beautifully finished interior with all fine carpeting and draperies. House is on 1.29 acres and there is 1.7 acres adjoining this property for sale. An excellent family home with lake facilities outside and much recreation area inside. One of a kind, \$65,000.

BLOOMFIELD REAL ESTATE CO.

MI 6-6500