

BRIDGE

in BIRMINGHAM

By **BUD MAYBAUM**
Southern Michigan
Bridge Association

DUPLICATE BRIDGE is played each Monday evening at 7:45 at the Community House and the first Monday of each month is master-point night. Beginners are encouraged to attend.

Dr. Harold Barron is a life master who displayed his mastery of the game when he played this hand.

NORTH-SOUTH VULNERABLE

NORTH
♠ A 8 7 6 5 2
♥ 9
♦ Q 8
♣ Q 10 6 4

WEST ♠ Q 10 9 5 4
♥ —
♦ 10 9 6 5
♣ 8 7 6 2

EAST (D)
♠ K 10 8 4 2
♥ K J 8
♦ K J 8 3

SOUTH (Dr. Barron)
♠ 6
♥ A Q J 7 6 5 3
♦ A 7 4 2
♣ A

The bidding:
East South West North
1♥ pass 1♠ pass
1NT 3♥ pass pass
Double all pass

The bidding indicates that Dr. Barron knew from the distribu-

tion that one heart would not be passed and he could show his values on the second round.

West opened with the spade five and north's ace won. A small club was then played and south returned a small diamond. East overtook north's queen with his king. East decided to smother north's spade nine and stop a diamond ruff and played the heart ten. South won this lead and cashed his diamond ace and exited with a small diamond which east was obliged to win with his king.

SOUTH RUFFED the club king; returned the heart queen that east won with his king. In a futile attempt to stop the eventual end play, east returned the heart deuce, won by south with his seven. After cashing his heart ace, south then completed the end play by leading the heart six.

East then led a club, allowing south to discard his last diamond and bring in his doubled contract.

Women to Meet

The Past Matrons Club of Birmingham, chapter 220 OES, will meet at the home of Mrs. Melvin Uppleger, 847 Emmons Street, on Tuesday at 1 p. m. for a desert and business meeting.

Rotary Anns to Meet

The Rotary Anns of Birmingham met Monday at the home of Mrs. Robert Thom, 6160 W. Surray. A luncheon was served at the meeting by Mrs. R. C. Nordstrom, Mrs. William Knight, Mrs. Adam Ladd, and Mrs. John Wakerainen. Robert J. Jones, of Oakland County Family Services spoke on "Family Life."

A subscription to The Eccentric brings you the community's top news events \$2 times a year.

Behind the Welcome Mat

by CORINNE ABATT

Each day I thank the Girl Scouts for having taught me to tie a proper, right over left, left over right, square knot. Not only does it come in handy for clothes line and toy repairs, but the string I use around my finger to remind myself to get bread is securely knotted.

This string ties my memory to the bread and me to a custom almost as old as man himself.

Memory joggers which may have started when an ancient Egyptian farmer made a mark on the side of his hut to record the height of the Nile floods were used in one form or another the world over.

During the Middle Ages, English housewives notched blocks of wood to record feast days and the length of Pars knotted ropes in elaborate fashion to keep track of tax payments.

HOPING TO START a lively dinner table conversation the other evening, I asked our five-year-old what he intends to be when grown up. Without missing a bite, he answered matter-of-factly, "A man."

THOSE ON a club or church committee for planning a social

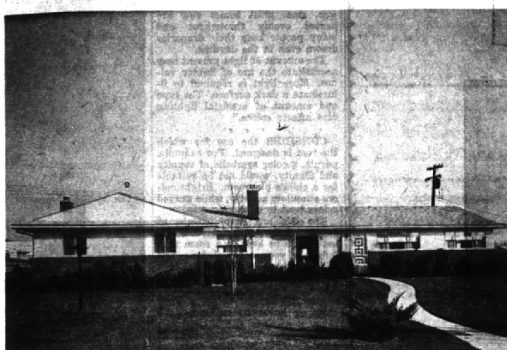
might give serious thought to a salad smorgasbord. The Ladies' Guild of our neighborhood church holds one annually with great success.

The buffet table loaded with the salad specialties of some 30 women, includes everything from light fruit and gelatin-and-lettuce salads to the whole meal types like tuna, chicken and shrimp. Top it off with cookies and coffee and it's a sumptuous meal without a lot of work for anyone.

NOTHING AROUSES as much pride or as many stifled giggles as the first performance of the grade school beginner's orchestra.

OUR STREETS' most expert home sewer says one of the secrets of her success is a dime-store ripper. The little gadget makes it easy to take out a seam that isn't quite perfect. Repair of the small imperfections often makes the difference between the homemade and the handmade look.

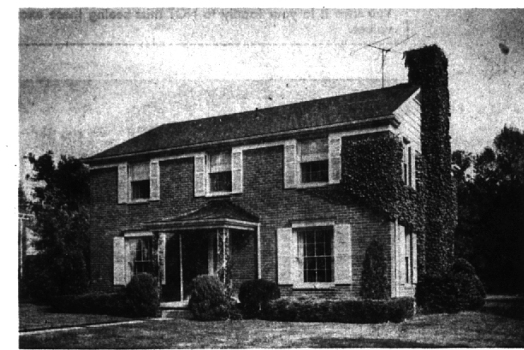
SUBURBAN CHARM—PLUS!



\$25,000

Paved street, water, sewer, gas, only 7 minutes from the heart of Birmingham. 1½ miles to commuter station. Bloomfield Hills schools and St. Hugo within walking distance. 3 bedrooms, 2½ tiled baths, 12'x17' family room with fireplace, screened terrace, 17x24 living room, Mahogany dream kitchen with built-ins and plenty of eating space. SHARPI! SHARPI! \$2500 down.

BLOOMFIELD VILLAGE



\$41,500

Charming 4 bedroom Colonial with 2½ baths. Spacious slate center hall foyer gives perfect traffic circulation to all first floor rooms. 28 x 14.6 foot carpeted living room plus enclosed porch which overlooks grounds that are 214 feet deep with mature plantings. Completely separate carpeted dining room, cozy paneled library, recreation room for children, 2½ car attached garage. SEE IT NOW!

VAN HORN

MI 6-2400

JO 4-5644

Answer to this week's puzzle will be found on Page 7-D.

ACROSS

- 1 Diphthong
- 2 Source of life
- 3 Misleading
- 4 Expire
- 5 Appalled
- 6 Flange
- 7 Insect
- 8 Pore hair
- 9 Growth
- 10 Alcoholic beverage
- 11 College officials
- 12 Seed
- 13 Corridor
- 14 Dutch
- 15 Painter
- 16 Forest
- 17 Salinal
- 18 Floral
- 19 Reading
- 20 Fossil digit
- 21 A Gulf of the Arctic Ocean
- 22 Liquid measure
- 23 Rejuvenate
- 24 Doctor of science
- 25 Degree
- 26 Safety
- 27 Comes in
- 28 Goddess of discord
- 29 Conclusion
- 30 God of war

DOWN

- 1 Welcomes
- 2 Values
- 3 Dishes
- 4 Brings legal action
- 5 Depart
- 6 Symbol for platinum
- 7 Group of cattle
- 8 Little devil
- 9 Small North American
- 10 Enlarge
- 11 Prefix before
- 12 Grand dead
- 13 Dwarf
- 14 Large
- 15 Sails
- 16 Sails
- 17 A vegetable
- 18 Sand hill
- 19 Bellows
- 20 Hate
- 21 To cut off
- 22 Disagree
- 23 Clipped
- 24 Couple
- 25 Qualified
- 26 Song thrush
- 27 Undoes
- 28 Chaser
- 29 Compass point
- 30 Looked at
- 31 We
- 32 Pen point
- 33 Begins
- 34 Do
- 35 Confuses
- 36 Back
- 37 Ocean
- 38 A vegetable
- 39 Sand hill
- 40 Bellows
- 41 Egg
- 42 To cover
- 43 Possessed
- 44 Dry
- 45 Land measure
- 46 Unwashed
- 47 plant
- 48 Pinch
- 49 Pin
- 50 Dog bark
- 51 Before
- 52 Spock
- 53 Praying
- 54 Grand Duke (abbr.)

PUZZLE NO. 699

1	2	3	4	5	6	7	8	9	10	11	12
13											
16											
19											
22											
25											
28											
31											
34											
37											
40											
43											
46											
49											
52											
55											
58											
61											
64											
67											
70											

Potpourri

(Continued from 1-D)

General Marshall, military critic and editorial writer and a Birmingham resident, is being interviewed April 23 on the "Today" show at the World's Fair in Seattle, in connection with his new book "Night Drop."

SINCE FEBRUARY, Junior League Puppeteers have been touring the Birmingham elementary schools on Thursday afternoons with their show—"Willie and his Wind Machine." After the second performance, which is given to the fourth to sixth grades, the girls explain how the puppets are made. The children watch while the stage is taken down and the scenery is packed. It is, for many of the children, their first introduction to live theatre.

TWO INTERESTING sales are coming up at Cranbrook. Art Academy students are selecting works to contribute to the fifth annual scholarship auction held at the Cranbrook Galleries.

Ceramics, weavings, paintings, drawings, sculpture and sketches will be auctioned to the public on May fourth from 8-11 p. m. and then are available for sale May 5 and 6 from 2-5 p. m.

Proceeds from the sale are used for student scholarships to The Art Academy.

The annual pottery sale, held in Crafts Court, runs May 10-20.

ADDITIONS - PORCHES - GARAGES

STUART E. SHEILL CO.

SINCE 1947

"Here Tomorrow To Guarantee Today's Job"

959 Rockaway Rd. MI 4-3713



BEAUTIFUL CORNER LOT — Gracious and substantial home in an established City area. Large rooms throughout.

Living room with fireplace — Separate Dining room.

Good Kitchen with breakfast space. Screened rear Porch.

2 large Bedrooms, dressing room and Bath on 2nd floor.

Third Bedroom or Den on first floor. Full Bath.

Very fine paneled and tiled Recreation room in full Basement.

Walking distance to Adams School. **FINE FAMILY HOME for \$33,900.**



ACROSS THE STREET FROM HOLY NAME

STURDY, well-maintained older home.

LARGE ROOMS. Full Basement with playroom.

24 foot Living room with fireplace.

Family-sized Dining room.

3 Bedrooms. Kitchen with eating space.

Wonderful huge screened Porch. 2-car Garage

Carpeting. Draperies. Storms and Garage.

GE disposal. New hot water heater.

WHERE ELSE CAN A FAMILY FIND ALL THIS FOR \$17,900.



1½ BLOCKS TO QUEEN OF MARTYRS — Fenced yard.

Attractive grey Brick with **FULL BASEMENT**.

Living room with **FIREPLACE**.

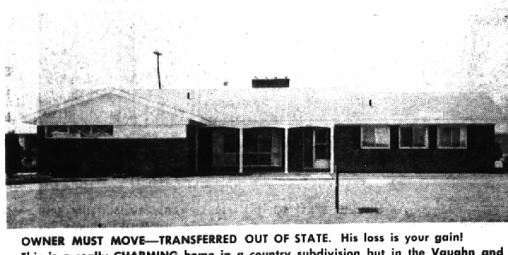
Separate Dining room. Screened Porch.

Large Family Kitchen; good eating space.

3 Bedrooms. 1½-car Garage.

Carpeting, Curtain and Draperies. Storms and Screens. Disposal.

MUCH VALUE in a good area for a young family. \$21,500.



OWNER MUST MOVE—TRANSFERRED OUT OF STATE. His loss is your gain!

This is a really **CHARMING** home in a country subdivision but in the Vaughn and Bloomfield Hills school district.

Slate center hall opens to delightful Family room with cork floor and fireplace —to the Bedroom wing (3 large Bedrooms and 2½ Baths)—and to the large Living-Dining room which has beamed ceiling, raised slate hearth and window-wall to Patio.

Wonderful large Kitchen and Breakfast space separated by counter — pretty decor (dado and wallpaper)

Circular Drive. Play-yard equipment included.

Carpeting and Draperies.

PRICED BELOW OWNER'S INVESTMENT. \$30,500.

Moving Out Of Town?

You may find it very trying to buy a home in a strange area. SEE US.

We are now affiliated with the largest inter-continental referral system in the United States.

AIMS

American Institute of Marketing Systems, Inc.

SNYDER KINNEY & BENNETT INC.

REALTORS

239 South Woodward MI 4-7000