

Fantastic Nature

Nature in one of her proudest moments decreed that a tiny seed which weighed only one 40,000ths of a pound, should produce one of the world's largest living things, a Douglas fir tree which might tower 275 feet tall and be 15 feet in diameter.

HI PARENTS

We have a carload of Easter Goodies which will delight your child, after he's filled his tummy with Easter Eggs and Jelly Beans.

You ask for them each year—we have them.

OPEN TILL NOON GOOD FRIDAY
BUT ALL DAY SATURDAY.

TRJcan 9-0400 Open 9:30-5:30

GOW's *little acre*

square lake road

Bring **SPRING COLORS** Indoors

with **Dutch Boy** paint

"DUTCH BOY" DOES IT BEST

Large Selection **WINDOW SHADES** \$1.29 up to 36" as low as No Charge for Cutting

HAZEL PARK FLOOR COVERING

4718 N. Woodward (Southeast Cor. of 14-Mile)

Tel. 549-6633 — Open 9-6; Thurs. & Fri. 9-9 Sundays 10-3

WE HAVE FENCING TO MATCH ANY STYLE OF HOME!

IT'S EASY TO BUILD YOUR OWN FENCE!

NEW CEDAR POSTS

Kiln Dried **WHITE FIR** 2x4

10' Lin. Ft.

4"x7 Ft. 69c ea.

3"x7 Ft. 49c ea.

ALL SIZES IN STOCK

WE ALSO HAVE A COMPLETE SELECTION OF *Habitant* FENCE

3 Ft. 17c ea.

3 1/2 Ft. 18c ea.

4 Ft. 19c ea.

CECEDAR 4x4

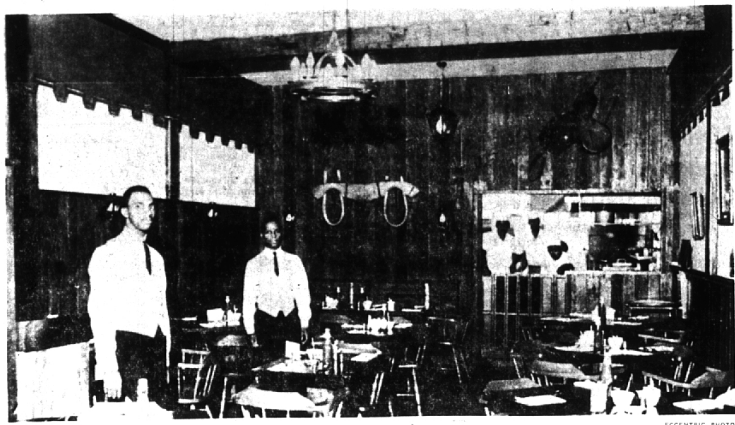
25' Lin. Ft.

FREE USE OF POST-HOLE DIGGER WITH FENCE PURCHASES

Birmingham Lumber AND SUPPLY COMPANY, INC.

1025 HAYNES STREET
PHONE MI 4-3636

Between Hunter & Adams — 5 Blocks South of Maple
Hours: 7:30 to 5:30 Mon. Thru Fri., 7:30 to 1:30 Sat.



New Restaurant Decorated in Two Era Style

By LARRY EVOE Business Editor

A combination of Victorian English and robust early Americana have been blended together to make up the decor of Birmingham's newest entry into the restaurant trade.

Termed by owner Bob Gwynn a "joint with a spooky atmosphere," the Beef 'n Bun, 181 S. Woodward, is an authentic blending of an English pub and a rugged frontier inn. Gwynn, a budding 36-year-old, opened the restaurant about three months ago.

ALL THE MATERIALS used in decorating the dining room were gathered in southern Michigan.

Six months of combing the state for authentic pieces of furniture were needed for the correct affect. The huge oak yoke that hangs on the rear wall was found in an antique shop in Clarkston. The 120-year-old plow that is suspended from the ceiling was contributed by radio newsmen Marshall Wells.

The shutters were saved from a barn in Brooklyn, Mich., blown over in a storm provided the walls for the place.

Magill Replaces Kelly as GM Assistant Treasurer

Robert P. Magill, 1234 Willow Lane, Birmingham, has been appointed assistant treasurer of General Motors, effective May 1.

In his new capacity Magill will have responsibility for the tax section and the insurance and pension section.

Mark E. Kelly, 888 Bloomer, Bloomfield Hills, is starting Tuesday, in charge of the insurance and pension section, is retiring April 30.

MAGILL JOINED General Motors as assistant director of the tax section in 1955 and has been director of this section since 1958.

Prior to his employment with General Motors, he served with the U.S. Treasury in Washington, D.C., for nine years.

From 1942 to late in 1945 Magill served with the U.S. Navy. He was separated as a lieutenant commander after serving in the Pacific theater.

He is a member of the Tax Executive Institute and the American Bar Association and its section on taxation.

Kelly joined General Motors April 22, 1957, as an accountant with the treasurer's staff in New York. He served in various capacities before he was appointed director of the savings and supplemental benefits section in Detroit in 1955. He was appointed assistant controller in 1957, and assumed charge of the insurance and pension section. In October, 1958, he was appointed assistant treasurer.

To Head Michigan Ad Agency Council

John L. Thornhill, 2545 Broadway, vice president of Campbell-Ewald Co., Detroit, has been elected chairman of the Michigan Advertising Agencies for the 1962-63 term.

Other officers, who will serve with Thornhill for the next 12 months, are John McKee Jr., 6072 Wing Kalamazoo, Midland, Birmingham Lake Road, vice president, Batten, Burtin, Durstine & Gibson, Inc., advertising agency, and Watts Wacker, 407 Kimberly, vice president and media director, D. P. Broder & Co., secretary-treasurer.

Re-elected a member of the Michigan Council's board of governors was W. H. Stone, 775 W. Maple, Birmingham office of Meldrum and Council, American Association of Pownorth, Inc.

THE MICHIGAN Council, consisting of 21 member agencies in Detroit, Lansing, Grand Rapids, Kalamazoo, Midland, Birmingham and Bloomfield Hills, is devoted to furthering high professional standards in advertising.

Thornhill succeeds Charles F. Adams, vice president, MacManus, John & Adams, who was chairman for the 1961-62 term.

Don't fight your lawn . . . enjoy it

DOW CRAB GRASS KILLER WITH ZYTRON KILLS IN ONE APPLICATION

Other products attack crabgrass . . . Dow Crab Grass Killer with Zytron kills it cold. No summer-long "programs." No tiresome follow-up treatments. Apply it just once . . . kills crabgrass seedlings as they sprout. Season-long control or your money back. 20-lb. bag treats 2,500 square feet of lawn. Buy it now . . . apply it now!

McCLELLAN-BALL CO.

EVERYTHING FOR THE YARD AND GARDEN

Phone MI 4-4133

850 S. Woodward, Birmingham, Michigan

4 DAYS SPECIAL THURS., FRI., SAT. AND SUN.

LARGE FAMILY-SIZE 2-ROOM 'HOMESTEAD' TENT

WITH FULL SEWED-IN FLOOR

17'6" x 9'4"

- CROSS VENTILATION
- SELF-ATTACHED LIVING AREA
- CANVAE PARTITION
- ALUMINUM TELESCOPIC POLES
- ZIPPED DOOR
- WIDE VISION
- STEEL STAKES
- ZIPPER ACROSS BOTTOM OF FLOOR

GENUINE "HETRICK" 1962 MODEL

SPECIAL ONLY.. \$115 A SMALL DEPOSIT WILL HOLD

THE SURPLUS SHACK

2923 N. WOODWARD (Between 12 1/2 & 13-Mile Rd.) LI 9-9803

We Give 2x Green Stamps

Open Mon., Wed., Thurs., Fri., Sat. 'Til 9 P.M.

OPEN SUNDAYS 10 A.M. TO 4 P.M.

GWYNN STARTED THE Beef 'n Bun because he wanted to create "an English atmosphere here in Birmingham."

"I didn't want the place to look new," he said. "I was tired of seeing restaurants that were all glass and formica."

Not only interested in owning a place full of atmosphere, Gwynn hired as his chef a man well-known to local residents.

Jimmie Brooking, who for many years ran his own place, "Hamburg Time," was picked to handle the cooking chores.

THE "JOINT" as Gwynn calls it has fast become a meeting spot for all Birmingham age groups.

Teens and college students have found the place a perfect spot to take their dates. The ladies find the darkened room an enjoyable stopping place during a shopping tour and businessmen appreciate the musicized meals available.

To complete the transition from the early English country inn to present day eating habits the menu features two of the U.S.A.'s favorite meals: a giant hamburger or a juicy boiled steak.

B'field Resident Dons General's Star

Marine Reserve Brigadier General William H. Klenke, Jr., of 959 North Harshale, Bloomfield Hills, started his annual summer training as assistant commanding general of the Marine Corps Recruit Depot, Parris Island, S.C., this week.

General Klenke became the first Marine Reserve General in Michigan in January 1960 and is the Senior Marine Officer in the Metropolitan Detroit area.

M'ham Man Earns MIT Fellowship

Paul A. Heinen of Birmingham was one of 41 to receive Alfred P. Sloan Fellowships in executive development at the Massachusetts Institute of Technology for 1962-63.

The fellowships, for a full year of education in management at MIT, were granted to outstanding young business executives both in the United States and abroad. They will begin their intensive year of study in management in June.

Heinen is employed by Chrysler Corporation.

W. B'held LWV

The annual meeting of the West Bloomfield League of Women Voters will be held at 1 p.m. Tuesday at Rotunda Inn. Program for the coming year will be finalized as well as election of officers and directors.

Mrs. Thomas Snelham, state League of Women Voters president, will be the guest of honor.

HILLS BROS. COFFEE

59c

FISHER'S MARKET

1218 S. Woodward Ave.
Midwest 1-4225

S'field Plans Course In Driver Training

SOUTHFIELD — Openings are now available for Southfield residents who wish to take the summer driver training course at Southfield High, Sanford Burr, director of guidance at the local school, said this week.

The course, required by law for persons seeking a state driver's license, will be open for registration until April 20. Interested residents may contact Burr at the high school.

INTERESTED IN HERBS?

TRY THESE HINTS FOR USING HERB VINEGARS: To your favorite dressing for COLE SLAW or POTATO SALAD add GARLIC WINE VINEGAR. Or a mixture of GARLIC and BASIL WINE VINEGAR. ASPARAGUS SALAD spiced with MIXED HERB WINE VINEGAR while hot and then chilled for an hour!

SALE ON UNUSUAL HOUSE PLANTS INCLUDING AFRICAN VIOLETS & CACTI \$2.99. JAPANESE YEW \$24. \$18.00.

ALL TYPES OF MINIATURES FOR DINING GARDENS AND TERRARIUMS!

FASTER PLANTS \$1.99 and Up! Special orders taken!

MAKE RESERVATIONS NOW FOR FLOWER ARRANGING CLASS STARTING MAY 3rd.

OPEN SUNDAYS 10:00 a.m.-4:00 p.m. EVENING 'TILL 7:00 p.m.

Mabel's Herb and Garden Shop

an addition to STEWART'S LAWN MAINTENANCE

2140 Walnut Lake Rd.,
Maple Rd. West to Inlander Rd. 1/2 mile north to Walnut Lake Rd. West to 2140
MA 6-2888

WHAT DOES YOUR LAWN NEED? Fertilizer? Crabgrass Control?

ASK US!

McCLELLAN-BALL CO.

EVERYTHING FOR THE YARD AND GARDEN

Phone MI 4-4133

850 S. Woodward, Birmingham, Michigan

SPRING PLANTING (SUMMER FLOWERING) BULBS

THE FATEST HEAVIEST LARGEST TUBERS, BULBS & CORNS we have ever been able to present.

GLADIOLUS — TUBEROSE — CANNA
DAHLIA — BEGONIA — CALLA
PERUVIAN DAFODIL — DAY LILY
L. REGAL — L. RUBRUM — L. AURATUM
BELLINGHAM HYBRID LILY — OLYMPIC HYBRID LILY and also LILY-OF-THE-VALLEY PIPS

NOTE:—One regal lily bulb weighed 2 lbs. 6 oz. The rest are 3 to 4 times the size weight of the bulbs of previous years. Other bulbs include ELEPHANT EAR & REGULAR CALADIUM.

OPPORTUNITY CORNER

This threatens to become a permanent part of our establishment.

It is located in the northwest corner of the showroom.

It contains a varied assortment of things of which we bought too many or priced too high.

There are things in it that would make you and us happier if you owned them.

Items as such as BASKETS, BAMBOO COASTERS, GLASS CONTAINERS, POTTERY — AND WICKER COCKTAIL BAR

Retail price — \$75.00
OPPORTUNITY PRICE — \$39.95

WHITE REDWOOD COFFEE TABLE
Retail price — \$23.65
OPPORTUNITY PRICE — \$12.95

WHITE REDWOOD CAPTAIN'S CHAIR
Retail price — \$22.11
OPPORTUNITY PRICE — \$11.95

CEDAR PICNIC TABLE
Retail price — \$31.90
OPPORTUNITY PRICE — \$16.95

McCLELLAN-BALL CO.

Everything for the Yard and Garden

850 S. WOODWARD, BIRMINGHAM, MICH.
FREE AREA DELIVERY Midwest 4-4133