

Fun For All



Wooded 1 1/2 acre site with Walnut lake privileges
Scenic, rolling area
3 bedrooms—2 twin size
Cheery kitchen with built-ins

First floor utility room
Basement
Immaculate condition with carpeting, curtains and drapes
\$24,900

Lathrup Village



Nicely landscaped 115 ft. site
FOUR bedrooms plus a 15x15 ft. family room
Full basement—recreation room
2 fireplaces

Large formal dining room
Fenced yard
Public and parochial schools
\$wim club available
\$28,750

HALL & YOUNG

INC.
REALTORS

BIRMINGHAM OFFICE
345 S. Woodward MI 6-7900

BLOOMFIELD OFFICE
4114 W. Maple MA 6-5900

INTER-CITY REAL ESTATE
REFERRAL SERVICE, INC.

from cities across America...
buyers for Birmingham
& Bloomfield Homes

CHARTER
MEMBER

County Agent Advises Families On Insurance

Your family cannot possibly afford all the insurance it ideally should have, according to Mrs. Mary A. Hardy, Oakland county extension agent in home economics.

How, then, can it cut corners to get the most coverage for the least cost?

A few suggestions Mrs. Hardy offers are:

1. Use group insurance when you can get it as it will be cheaper than an individual policy. Although it may not offer the same coverage, it may still meet most of your needs.
2. Buy "deductible" insurance because it is less expensive. The deductible portion is the portion you pay. For example, if you have \$50 deductible health insurance, you are responsible for paying any amount up to \$50 or the first \$50 when you make a claim. A higher deductible lowers the premium you pay.
3. Most important of all, make small risks a budget item, not an insurance item. Insure only for the larger, serious risks which you know you cannot afford.

YOU DO NOT BUY insurance to pay for your groceries or your rent, the home economist points out. Neither should you buy insurance for low-cost risks that you can actually afford. You may end up paying more for the insurance than you would have paid if you planned your budget to cover such expenses yourself.

Here's How:

By ANNE ASHLEY

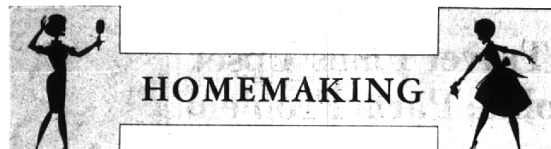
Q. What can I do when I have inadvertently added too much salt to food while cooking?
A. Stretch a clean cloth tightly over the vessel and sprinkle a tablespoon of flour over the cloth. The flour will absorb the salt, if allowed to steam for a few minutes.

Q. How can I straighten out a warped phonograph record?
A. One often-successful method is to place the record between two pieces of glass and set it where the sun will shine on it for an hour or so.

Q. How can I remove colored candlewax stains from table linens?
A. After scraping off as much of the excess wax as you can, place the stained portion between two pieces of blotting paper, and press with a warm iron. Most of the grease will be absorbed by the blotting paper. Then sponge with denatured alcohol to remove the dye.

Q. How can I keep that hard-to-remove substance from gathering on the sides of my pan when boiling sweet potatoes?
A. A half-teaspoon of bacon drippings or other grease, added to the water in which sweet potatoes or other root vegetables are boiled will do the trick.

Q. How can I renovate and brighten my black suede shoes?
A. You can give them a new lease on life by sponging them with some black coffee.



HOMEMAKING

Try This Chinese Chicken Goulash

By JEANNE LLOYD

From the pages of "Cooking Secrets," published by the Birmingham Women's Club.

Ingredients
1/4 C. butter, chicken fat, bacon fat or cooking oil
1 small onion, sliced
1 C. mushrooms, fresh or canned
1 C. washed, uncooked rice
1/2 C. rich milk
1 green pepper, in thin strips or cooking oil
1/2 C. diced celery
2 C. diced, cooked chicken
Almonds; pimento, salt, pepper
Chicken broth

Directions
Melt butter or other fat in heavy skillet, add onion and mushrooms; cook until golden. Pour in chicken broth and heat to boiling. Stir in rice, cover and simmer gently 10 minutes.
(Note: If dehydrated rice is used, simmer only ordinary cooking time for this type of rice.) Add rest of ingredients, cover and cook 10-15 minutes more. Six servings.

Maple Syrup Gains in Taste From Research

It's spring and maple sap is running. It may be running into covered buckets, plastic bags or running through plastic tubes into holding tanks. It takes about 20 to 35 gallons of sap to make one gallon of syrup. This is one of the reasons why maple syrup commands a price of about \$6 per gallon explains Oakland County Marketing Agent, Mrs. Josephine Lawyer.

As a result of research at Michigan State University, the maple syrup industry is being revitalized in Michigan. The use of a network of plastic tubing to lead sap from the taphole of the tree to a storage tank provides a more sanitary collection, and eliminates much of the physical labor previously needed.

BY KEEPING maple sap essentially sterile, it is possible to produce fancy grade syrup regardless of the season. The percent of maple syrup which is top grade has increased from less than 50 per cent just 10 years ago, to more than 80 per cent during the past two years. Top quality syrup is crystal clear, light amber in color and delicate in flavor.

United States grades for maple syrup are "Fancy", "Grade 1," and "Grade 2." Since demand for "fancy" grade syrup is often greater than the supply, spring is the best time to buy that grade.

"MAPLE FLAVORED" blends may contain as little as 15 per cent pure maple syrup. Labels list ingredients in the order of volume in the container.

Maple syrup may be substituted for sugar in any recipe. Just remember that for each cup substituted, reduce the liquid in the recipe one-third cup. Baked goods made with syrup should be baked at 25 degrees lower temperature than usual.

Home 'Ec' Alums Have Opportunity To Attend Shows

Of interest to Birmingham-Bloomfield alumnae of Michigan State University is announcement of MSU's thirteenth annual Home Economics Alumnae Day Saturday in Kellough Center.

Key speaker will be Dr. Charles R. Adrian, director of MSU's Institute for Community Development and advisor and consultant to the Constitutional Convention. He will discuss "Con Com—Implications for Michigan Families."

Also on the program are Mary Shipley and Robert Bullard, textiles, clothing and related arts department, who will present "What's New in Interior Design and Lighting."

Mrs. George Axinn, wife of the co-ordinator of MSU's Nigerian program will speak on "Family Life in Changing Nigeria."

Prices Are High For Fish Products

Prices of fish and shellfish will remain moderately high during the next few months. Frozen fish supplies are relatively low at present... but fisheries are just now getting the new season under-way.

Tuna is still the only canned fish available in volume. Packers report they have sold a record volume of tuna this season, and special offers will be ending shortly.

In a Pickle? Try This Dilly

Dill, that zippy, tangy flavor, means more to the gourmet than pickles. Dill weed gives such tasty and unusual flavor to green salads, you'll want to eliminate garlic, oregano or other herbs you are ordinarily so fond of.

Dill pickles lend a tangy touch, too, to many main dishes. Try chopping a bit of the pickles and adding it, with about a teaspoon of the juice, to your sauces. A cream sauce with dill pickle makes a grand accompaniment to veal steaks or cutlets. The more you try dill the more you'll like it.

Plenty for Coloring

Egg prices are expected to reach their seasonal low in the second quarter of the year (April starts it), and they are expected to be significantly below those of a year ago. There'll be plenty for Easter and every other day.



Spring Cleaning

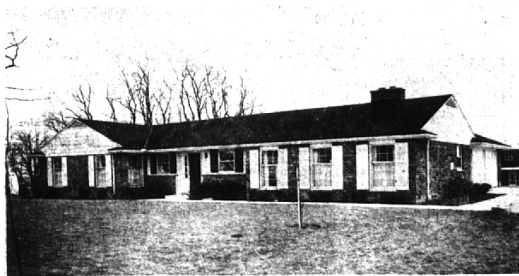
MRS. JOHN WIAND is just one of many Birmingham homemakers who could in all likelihood be caught on the pleasant balmy days we've been having recently. In the picture above, a stuffed duck in the Wiand's den is getting the annual brush-off.

ART CLASSES

START THIS WEEK AT
ARTISTS' SUPPLY CENTER
1220 N. WOODWARD—2 Blocks South of 12-Mile Road
LI 8-7680—OPEN 9-6—THURS. & FRI. TILL 9 P.M.
PICTURE FRAMING on the Premises
"SO YOU'RE AN ARTIST!"
Free Booklet to all Visitors requesting a copy

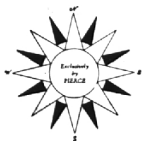
Birmingham Eccentric Want Ads Get Results—MI 4-1100

POSSIBILITIES UNLIMITED



A Home on the
Hill in the
HEIGHTS
for
a
growing
family

- FOUR BEDROOMS, 2 1/2 baths
- FAMILY ROOM with fireplace
- KITCHEN with eating space
- Dishwasher
- Disposal
- Built-in Oven and Range
- Sewer



FRED PIERCE INC.
460 NORTH WOODWARD, BIRMINGHAM, MICH.
Midwest 7-1414



SALE FOR LIMITED TIME ONLY
IMMEDIATE DELIVERY

Flavor your meals with the warmth of Ethan Allen . . . 250 exemplary open stock pieces of select northern hardwoods, crafted to stringent 18th Century New England "guild" standards . . . now modestly salepriced for exceptional value. Special for this Easter; 48" round extension table with plastic top (with 21 1/2" leaves) and 4 comb-back mates chairs.



PLASTIC TOP TABLE
4 CHAIRS
REG. \$223.00
NOW \$199.00

48" MATCHING
BUFFET AND HUTCH
REG. \$210.50
NOW \$179.00

BUDGET TERMS
90 DAYS SAME AS CASH
DECORATOR SERVICE
WITHOUT OBLIGATION

Open
Thurs.,
Fri.,
Sat.
Til 9 P.M.



Free
Parking
On
All
Lots