

Bring **SPRING COLORS** Indoors



B'ham Residents Promoted by Burroughs Corp.

Two Birmingham residents have been promoted by Burroughs Corp. Frank Woods, 1568 Yorkshire, has been named sales manager—data processing for the business machines firm's six-state Atlanta district, and Randy Hansen, 1301 Stanley, has been appointed a computer specialist in Seattle.

Both men previously held positions at Burroughs' Detroit home office. In his new position, Woods will coordinate and administer the sale of data processing equipment in Georgia, Florida, Alabama, Mississippi, South Carolina and Tennessee. Hansen will direct computer sales in Alaska and Washington.

with **Dutch Boy** paint
"DUTCH BOY" DOES IT BEST

Large Selection **WINDOW SHADES** \$1.29
up to 36" as low as
No Charge for Cutting

HAZEL PARK FLOOR COVERING

4718 N. Woodward (Southeast Cor. of 14 Mile)
Tel. 549-6633 — Open 9-6; Thurs. & Fri. 9-9 Sundays 10-3

EXPERT SERVICE PORTABLE TV
FAST DEFENDABLE
Birmingham Electronics
141 E. Maple MI 6-8440



Hogan Elevated By Fram Corp.

R. G. Hogan has been elevated to the position of vice president—sales manager of the Manufacturers Sales division of Fram Corp. He has been with the American Seating Company, and during World War II he served as a major in the Air Force.

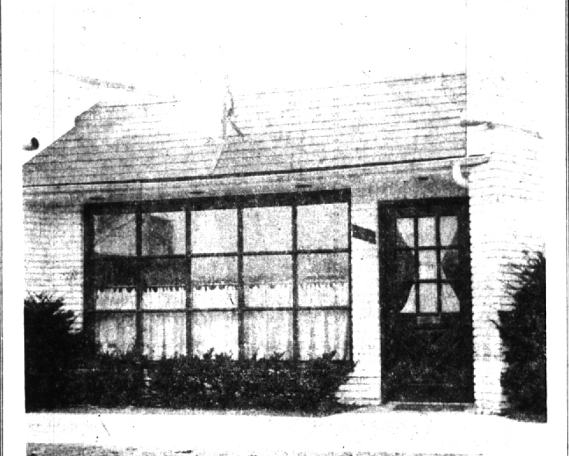
Spring CHANGE-OVER SPECIAL

- All These Services INCLUDED! Lowest price in town!
- 6 QUARTS OF OIL
- DRAIN AND FLUSH COOLING SYSTEM
- ADD RUST PROTECTOR
- CHECK ALL HOSES with pressure tester
- REPLACE THERMOSTATS (labor only)
- LUBRICATION

ALL FOR ONLY **\$6.95** SAVE \$3.00
IF WHEELS ARE PACKED AT SAME TIME—PAY ONLY \$1.50 (SAVE \$1.00 MORE!)

ED STONE'S
HUNTER Standard SERVICENTER
347 SOUTH HUNTER between Forest and Chestnut
BIRMINGHAM * Phone MI 4-9654

TOP INVESTMENT! (Or for your own use)



This most attractive office building is on Woodward Avenue right in Birmingham. The interior is just as attractive as the exterior, there are 2 large private offices, one paneled in pine, the other in oak, a large reception lobby and office, and a good sized general office area. Would be ideal for Manufacturer's Agent, Insurance, or any professional use. At the price of \$21,000 with \$7,000 down you will receive a far above average return on your investment.

Call Ray Smith
Max Brook, Inc., MI 4-6700

Health Studio Opens

Hilda Slate, co-manager of the new Figurette Inc., health studio, 625 Hunter, shows pretty Lynn Benjamin how to operate an electrical roller. The new studio will open for women only April 9. Figurette is associated with more than 300 health studios across the country. Over \$35,000 in equipment will be available to studio customers. Hours are from 9 a.m. till 9 p.m.

Firm Offers Illustrated Talk As Public Service

The Kuhlman Electric Co., 2565 Maple, Troy, is offering as a public service, a 30-minute, slide-illustrated talk to local civic organizations, luncheon clubs and other interested groups. Subject of the presentation is the "Impact of Foreign Imports." Prepared by the National Electrical Manufacturers Assoc., the presentation is a factual discussion of the problem faced by American industry and the American economy as a result of import competition from countries where wages and other costs are substantially below those prevailing in the United States.

A&P Announces Personnel Shifts

Edward J. Vogel, 2517 Broadway, Bloomfield Twp., vice president of A & P Food Stores' Detroit unit has announced three changes in personnel.

Robert J. Murray, formerly sales manager, has been promoted to the position of superintendent of the company's Detroit unit. In his new assignment, he will assist Vogel in directing store operations in metropolitan Detroit and Eastern Michigan, extending into the thumb area.

Garfield McDeade succeeds Murray as sales manager, and John J. Cairns replaces McDeade as assistant sales manager.

A native of Saginaw, Murray joined A&P in 1934 and managed stores in Saginaw, Bay City, Midland and Flint prior to coming to Detroit in 1944. In Detroit, he was associated with the sales department for some 12 years and has been sales manager for the unit since 1959.

McDeade began his food career in 1937 in Lapeer, and became manager at Berkley in 1945. Since 1952 he has served in various office and field positions, and has been assistant sales manager of the Detroit Unit for more than three years.

Cairns, 31055 Pierce, Beverly Hills, has been with A&P since 1949, serving in various capacities including store manager, cash auditor and sales representative in the Detroit unit. He was also associated with the personnel department for more than two years, and has been a store supervisor in the Detroit area for the past year.

STOP AT MICHIGAN FIRST AID for Invalid and Sickroom Supplies
• • •
WHEEL CHAIRS Equipped With Brakes \$59.95
MICHIGAN FIRST AID Invalid needs—sick room supplies
LI 2-3027 JO 4-6547
1621 S. Woodward, R. O.
3 doors north of 10 Mile

Applications Open

The U. S. Civil Service Commission has announced an examination for Financial Analyst for filling positions paying from \$6,435 to \$12,240 a year in the Housing and Home Finance agency in Washington, D. C. and at various locations throughout the country and in Puerto Rico. Announcements and application forms may be obtained from many post offices throughout the country or from the U. S. Civil Service Commission.

Neeme Becomes Vice President

Appointment of Adolph J. Neeme, 32215 Auburn, Beverly Hills, as vice president and general manager of Racine Foundry & Mfg. Co., Detroit, has been announced by J. C. Emery, president.

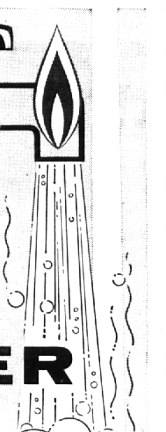
Neeme graduated from Grosse Pointe High School, attended Rutgers University and has an A.B. degree from the University of Michigan.

Prior to his new appointment, Neeme held the post of general sales manager. Before joining Racine he was associated for nine years with American Foundries Co., Milan; Maumee Malleable Castings Co., and National Cash Register Co., as sales representative.

The University of Michigan awarded 88 per cent of all Ph.D. degrees and 67 per cent of all professional degrees conferred by Michigan public institutions last year.

GAS WATER HEATERS Give Top Performance

MORE HOT WATER AT LOWER COST



Top performance means dependable service—21 hours a day. And that's what you get with a fast, economical GAS water heater. In fact, your after year it goes on filling every family need for hot water in the home. If you are considering a new water heater, ask your friends who have a GAS water heater and see how pleased they are with its automatic performance and low cost, dependable operation. IT WILL PAY YOU TO GET THE FACTS!

YOU SAVE WHEN YOU BUY, INSTALL, AND OPERATE AN AUTOMATIC GAS WATER HEATER. Get The Facts!

See Your GAS WATER HEATER DEALER or PLUMBER
PUBLISHED IN COOPERATION WITH WATER HEATER DEALERS BY CONSUMERS POWER COMPANY

It's Quick, Easy and Thrifty

TO SHOP AT BIRMINGHAM LUMBER

BASKETBALL BACKBOARD SET

\$9.95 Set Training Site

Includes Rim and Net Training Site

THINKING OF A WOOD FENCE? SEE US FOR IDEAS, PLANS.

LOUVER BIFOLD DOORS

IDEAL TO DRESS UP YOUR HALLWAY

LOW AS **\$16.95**

MAHOAGANY BIFOLD DOORS Low as \$11.65

BIRCH BIFOLD AS **\$12.95**

CEILING TILE VALUE!!

VOLUME PURCHASE ALLOWS US TO SELL

12x12 WHITE TOP QUALITY **10¢** sq. ft. (66' Cart.—\$6.60)

KNOTTY PINE PANELING

Random Widths Specified Lengths Solid Knots **FROM 16¢** sq. ft.

WE WILL HELP YOU DO IT YOURSELF, OR RECOMMEND A QUALIFIED CONTRACTOR

BIRMINGHAM LUMBER & SUPPLY COMPANY, INC.
1025 HAYNES CALL MI 4-3636
Between Adams & Hunter—5 Blocks South of Maple (East of Greenfield's)
Hours: Mon. Thru Fri. 7:30 to 5:30 P.M. — Sat. 7:30 to 4 P.M.