



Music Makers

Junior high school members of Moment Musicals rehearse for their coming concert which will be held at 7:30 p.m. Wednesday at the Community House. Treasurer Mary Ann Heym plays the piano while fellow mu-

sicians (from left) Louise Hohmeyer, president; Carolyn Ruffer, corresponding secretary, and Brenda Ebersole, vice president, help her make music.

Southpaws Lead Left-Handed Life

By GIL JORDAN

Throughout the length and breadth of this land of ours lives a forgotten form of civilization known as the "Left-Handed." When at rest they look very much like ordinary people, but when you see them in action this strange species is easily recognizable.

The problem of the southpaw starts early in life when his close relatives observe with horror that he grasps things with his left hand rather than with his right. This prompts them to snatch toys from his chubby left fist and transfer them to the opposite hand. However, after months of battling this affliction the assorted relatives realize it is a losing battle.

BY THE TIME the male southpaw starts playing sandlot baseball he soon discovers he has a peculiar problem. The pitcher's glove and the catcher's mitt (which usually belong to a right-handed kid) have thumbs on the wrong side. Of course if he's wealthy enough to have his own left-handed equipment. These problems, however, are minor. This problem is easily remedied, compared to those he will face in the years ahead. For instance...

The next time you're in a bank, take a gander at the left-handed

character striving to use one of those public ball point pens which is chained to the desk. Although the pen will give him no trouble, that dangling chain for some reason manages to get in the path of his pen and snarls things up completely. In the hands of a right-hander that pen would pose no problem—but in the hands of the left-hander that retractable chain is an invention of the devil.

FOR A REALLY good laugh, watch the southpaw at a party where he is trying to pour a glass of punch from a right-handed ladle. (Do they make any other kind?) Since the pouring spout is on the right side of the ladle the left-handed victim has no choice but to switch the thing to his poor, useless right hand which is about as valuable to him as a broken wing.

But with his never-say-die spirit, he will insist on pouring the punch in his shaky fashion, and as expected, dribbles the liquid on the hostess' mauve divan. Worse still, he trickles a bit on the lap of the guest who is wearing a white velvet dress which set her back three weeks' pay.

A NEAT TRICK to try on a left-handed guest is to hand him a can of sardines and a can opener.

The trouble here is that the flange on the can opener is on the wrong side which reduces the cutting edge to a mere hacking operation. He may open the can eventually but the sardine juice which he has spat-tered on his pants will practically guarantee that every cat in town will follow him home. And the hostess will need the services of a reliable rug cleaner to remove that sardine oil from her Oriental heirlooms.

Like the fellow carrying Strontium 90 in his pocket, there's little the average person can do to help the left-hander. But the smart host can avoid him and his cumbersome ways in this right-handed world of ours.

THE SOUTHPAW is never lonely, however. It's much too busy unwinding twisted telephone cords, switching coffee cups from right to left, wrestling with chains attached to ball point pens and practicing with right-handed can openers.

The left-hander may have trouble with tools, sports equipment, musical instruments and back-handed penmanship, but never make the mistake of playing ping pong with him for money. That ball coming across the table from where you least expect it will quickly make you poorer but wiser.

Forum

(Continued from 1-D)

It is very important that all tests be made with proper developers, freshly mixed for exact times. By means of this test, you will be able to make your own ASA table, one that is correct for your own camera and light source.

Medium speed films:	Daylight	Tungsten
Adox KR21	80	64
Adox Brown 128	100	80
Ilford FP-X	64	50
Kodak Tri-X	40	32
Permut Peronina 21	100	100

Medium-speed films are not the finest in terms of grain—or the best in terms of speed—yet they do have a definite place in a photographer's wares. Many times you will want to get a sharp, available-light picture in a rather subdued light area. This is where your medium-speed films will be very beneficial.

ONE PLACE that the medium-speed films will be essential is in deep forest, where the light coming through trees is insufficient to do a good job with slow films. In this situation, the faster films won't give you the necessary shadow control.

Fast film:	Daylight	Tungsten
Ilford HP5	400	320
Kodak Tri-X	400	320

Fast films should be used for only one thing; to get a picture where you cannot get enough light to do the job with a slower film. There is an advantage to fast films, however, if you push them up and use them with a greater ASA.

THIS WILL give you enough speed to stop a diver in mid-air, with available light, at night in an average-lighted pool. I will not try to tell you that you will get good grain results, however—you won't.

I carry three films with me when I go on assignment and have never found a time when I needed anything but these three.

For my slow film, I use Adox R17, rated at 80 ASA, and developed in Kodak D-76 for eight minutes. My medium-speed film is Kodak plus-X pan, developed in D-76 for eight minutes and rated at 200 ASA. For my fast film, I use Tri-X rated at 400 ASA, developed in D-76 for eight minutes.

FOR AVAILABLE light, I use Tri-X pushed to an ASA of 1200 and developed in acrifine developer for 4 1/2 minutes.

You may either try to use these films or work out your own film and developing time. Try to use as few films as possible and stick to one developing procedure. When you get it down to a precise procedure you will get exact results every time.

In next week's column, I'll comment on a guest photo. Meanwhile, address your questions and prints to me at The Birmingham Eccentric, 1225 E. Bowers, Birmingham.

Mass displays, placement of featured items at the end of the aisle and placement of food items at eye-level are successful methods used to attract customer attention in food markets.

Folk Arts, Crafts Gain In Interest

The influx of hand-crafted articles from other countries has helped create an interest in folk arts and crafts in the United States and crafts are attracting attention as a worthwhile leisure pursuit.

"In a highly mechanized society that offers little opportunity for self-expression in daily activities, crafts furnish an excellent creative outlet," says Jean Strange, assistant professor of textiles, clothing and related arts at Michigan State University.

A craft fills the need for creativity best if it is a useful piece of art which has been fashioned by hand. The craftsman's original design is used. It has been conditioned by the materials used and the techniques of the craft. Media such as mosaic, block printing, rug hooking, silk screening and weaving can be utilized to fit individual needs.

Manufacturers are jumping on the craft band wagon and are turning out many so-called craft kits. These kits often present the individual with neither a creative challenge nor a useful educational experience, says Miss Stange.

TO BE EFFECTIVE, crafts must be approached from the creative and experimental point of view with as much emphasis on the conception of the idea as on its expression," she explains.

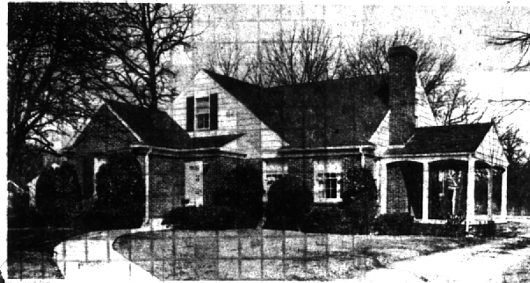
Combination
ALUMINUM
Doors (\$25⁵⁰) - Windows (\$13⁵⁰)

Plus Installation
FREE! SPECIAL OFFER WITH THIS DOOR —
Heavy Duty Hydraulic Closer (Reg. \$4.95)

★ PORCH ENCLOSURES ★ SHUTTERS
★ ALUMINUM SIDING ★ FORMICA

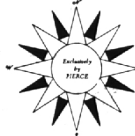
WOODCRAFT COMPANY
Serving Satisfied Customers Since 1923
1184 Grant, S. of Lincoln MI 4-0424

REDDING ROAD



Quarton School
Conveniently
Located

- 13 X 38 Recreation Room in basement
- Separate Dining Room
- Fireplace in living room
- 3 bedrooms, 2 1/2 baths
- Screened porch
- Beautiful Landscaping

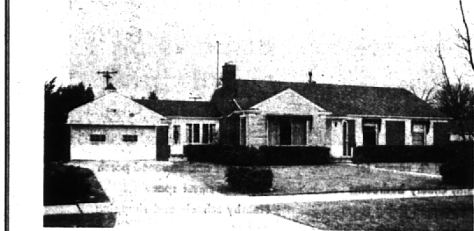


FRED PIERCE INC.
460 NORTH WOODWARD, BIRMINGHAM, MICH.
Midwest 7-1414



4 BEDROOM COLONIAL

All bedrooms are on second floor with 2 baths and a lav, also first floor lav. Bays in the library and dining room. Fireplaces in the living room and tiled recreation room. Screened porch. In the Midvale and Seaholm School districts, \$38,750.



SECLUDED LOCATION, YET NEAR SCHOOL

Homes are rarely available in this area! Transfer makes possible the opportunity to obtain this custom-built 3 bedroom ranch. It boasts a paneled Florida room, and a 33 ft. paneled recreation room perfect for parties, meetings, and hobbies in the full basement, also with a bath. Beautifully maintained shrubbery compliments this residence of outstanding construction. \$32,900.



LOVELY, AUTHENTIC
EARLY AMERICAN

The exterior beauty of this two-level house is matched by its charm within. Architect Edward Bissell, working with the owners, has achieved a most delightful early American interior.

The big living room, 15'6" x 26', opens onto a charming family room or library 13' x 18'. Large windows offer a delightful view of the rear garden.

Three charming bedrooms and two baths occupy the west end of the main floor. On the lower level there is a fourth bedroom and bath. Also, a very large activities or recreation room with bar.

839 Lone Pine Road is a good address. Lone Pine Road is scheduled for paving with curb and gutter this summer, with no assessment to home owners. A wonderful buy at \$49,750. Let us make an appointment for you to see it. We'd like to do it.



3 BEDROOM BRICK NEAR SHOPS

Excellent built-in storage and closets! Screened porch. Also recreation room and lav, all carpeting and drapes throughout, intercom system. The fenced yard is professionally landscaped. Owner has already moved. In excellent condition, \$16,000.



NEAR BLOOMFIELD HILLS COUNTRY CLUB

Bi Level design has 3 upper level bedrooms with 2 baths, powder room, also large Lauderdale Room, paneled Family Room, separate Dining Room. Expandable lower level comprising bedroom, bath, library with fireplace, lav, and activities room leading out to one of the loveliest sites in the heart of Bloomfield Hills. Professional plantings, meticulously cared for. Immediate occupancy. \$89,500.

Weir, Manuel & Snyder, Inc.

298 South Woodward
Birmingham, Michigan Realtors

Birmingham 644-6300
Phones: From Detroit 566-2323