

# SPECIAL SERVICES

Teachers sometimes find children in their classes who, despite all efforts, do not make satisfactory progress. This apparent lack of ability to learn or achieve in school presents a serious problem of instruction and classroom management. It is estimated that about twelve per cent of the school age children in any community may be in need of special education programs and services programs.

Realizing that all children should be helped to reach their fullest potential for com-

munity living, the Birmingham Schools have programs in operation for children who are mentally handicapped, physically handicapped, emotionally disturbed, and those who have speech difficulties. These programs are operated in conjunction with the Oakland County Special Education Program. Because of its county-wide operation, Special Education Programs in Oakland County are able to provide extensive services for almost all handicapped children in the county.

## Programs

Visiting Teacher service (emotional maladjustments).  
(Five Visiting Teachers)  
Speech Correction service  
(Five Speech Correctionists)  
Rooms for the Mentally handicapped  
(Four classrooms—kindergarten through high school)  
Teacher-Counselor for Physically Handicapped  
(One teacher)  
Adjusted Study rooms (behavior problems).  
Psychological services  
School Health Services  
(Five Nurses)

Programs provided in Oakland County in which Birmingham students are enrolled:

Orthopedic — youngsters requiring physiotherapy and special care.  
Blind — totally blind  
Hard of Hearing  
Sight Saving — vision difficulties

## PHYSICAL EDUCATION

Physical education is offered on a required basis at all grade levels. In the elementary grades, instruction provided by the physical education teacher is supplemented by the classroom teacher.

In the secondary schools the equivalent of 2½ periods of instruction is required weekly. Approximately fifty per cent of the secondary instruction takes place in the pool.

An intramural and varsity sports program has been established as after-school activities supplementing classroom instruction.



A physical education program is planned for the elementary children. Playground activities and equipment help each child develop coordination and build up muscle strength, important aspects for good health.

## Needs

Additional psychological services in one more year.  
Additional classroom for mentally handicapped in two more years; also additional staff.

Additional staff for physically handicapped program.  
As programs for the emotionally disturbed develop in the county and state, we are anticipating the development of a program in Birmingham.

Classes for brain injured students.

## Improvements

1961-62:

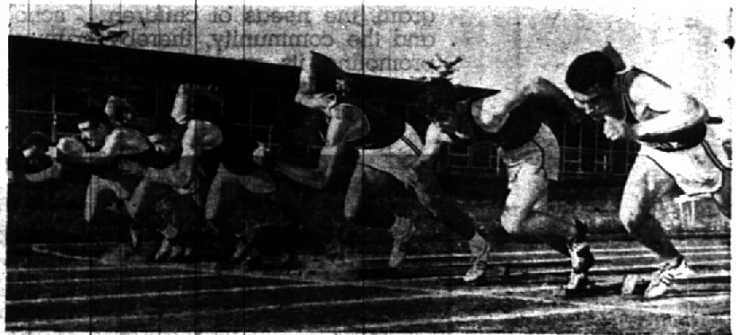
A coordinator for the program has been appointed.  
A diagnostician has been employed to provide psychological services.

A new program for mentally handicapped opened at Groves High School.

One additional speech correctionist, bring staff up to five.

One additional visiting teacher, bringing staff up to five.

One additional school nurse, bringing staff up to five.



Track is one of many varsity sport areas offered as an after-school activity in the secondary level. Varsity athletics are a supplement to the basic physical education curriculum.

## Improvements

1961-62:

Appointment of an assistant to the coordinator of physical education, athletics and recreation. The major responsibility of the assistant will be the supervision of the boys and girls physical education program.

Employment of an additional physical education teacher to improve service to the elementary schools.

An intramural sports program for children in the upper elementary grades and in the secondary schools. All sports activities are scheduled as after-school events.

## Needs

Review of physical fitness program in terms of the current national emphasis and the recommendations of the Birmingham Citizens' Committee.

Improvement of locker rooms in the older secondary schools.

Greater emphasis on remedial instruction for students with physical disabilities or deficiencies.