

Schrott, Mischakoff Present Concert

Walter Schrott, pianist and director of the Birmingham Conservatory of Music, joined world-renowned violinist Mischakoff in a special Concert Monday at Margrove College, Detroit. They played Beethoven's celebrated "Kreutzer" sonata in A major (Opus 47); the "Maximilian" by Wieniawski; and "Girl with the Flaxen Hair" by Debussy. Mischakoff is concertmaster with the Detroit Symphony.

Students Commended At Southfield High

Six Southfield High students will receive letters of commendation for their high scores on the National Merit scholarship qualifying test given last spring. The six are Janet L. Chapman, Lawrence W. Graber, Wallace E. Kopek, Robert A. Lushier, Mitchell Polak, and Lester Wilkinson. Each of these students ranked in at least the 98th percentile on the test.

THE AMERICAN HOUSE

1900 N. WASHINGTON, ROYAL OAK

An exclusive residence for responsible single individuals over sixty-one.

Applications are being accepted for year end occupancy. For information and brochure, call LI 5-4300 or write 1204 North Woodward, Royal Oak.



INGSIDE DRIVE

South of Ten Mile, West of Telegraph

A Fastidiously Custom Built Ranch Home
Natural Birch Woodwork—Natural Stone Fireplace
Three Big Bedrooms — Two Full Baths
Living Room and Bedrooms Overlook Landscaped Ravine
Breathtakingly Beautiful

\$38,000

Shown Only By Appointment

J. L. VALIQUETT CO.
KE 3-2060



COMING NOV. 2

REXALL
ORIGINAL

America's
GREATEST
Drug Store Event

1¢ SALE
10 DAYS ONLY!
49th YEAR

COME IN NOW FOR YOUR ADVANCE SHOPPING LIST

Check the items you want on this handy list. Leave the list with us and pick up your order on the first day of the sale.

- AVOID WAITING—order now, ahead of the crowd.
- ELIMINATE SHOPPING—let us prepare your order
- ASSURE SAVINGS—while stocks are complete



2 for 1-

PLUS A PENNY!

Buy one item at regular price... get a second identical item for one cent more.

See our ads in
LIFE • LOOK • POST
Progressive Farmer • Farm Journal
and in the magazine section of your
SUNDAY NEWSPAPERS on NOV. 5
FEATURED ON TV AND RADIO, TOO

WATCH FOR OUR
REXALL 1¢ SALE CIRCULARS

SHAIN'S Rexall DRUGS

GOOD HEALTH TO ALL FROM REXALL

105 W. MAPLE

MI 4-2121



'Fair Contribution'

FRANKLIN—Two enterprising and public-spirited 10-year-olds, Larry Smith (left) and Brian Frutiger (right) made a "fair" amount of money for the Franklin Community Building fund last Saturday. Busy all week painting signs; printing and distributing 121 notices; working up six booths and skill games; buying prizes and depositing the Frutiger family car from the Tudor Lane garage, they cleaned up \$20.60

in the four hours of their homemade Fair. Mama's pots and pans took a beating as borrowed equipment and sisters pitched in with homemade cookies and lemonade. Everybody had a good time. Parents of both boys, Dr. and Mrs. Ralph Smith and Dr. and Mrs. A. Frutiger were most surprised to learn it was all done for a good cause... and not just spending money.

DELLS OF BLOOMFIELD

Now completing outstanding 4 bedroom Farm Colonial on beautiful wooded lot, 2 1/2 baths, walnut paneled family room, 2 fireplaces, exceptionally large master bedroom with adjoining dressing room. Full city improvements complete this desirable suburban site.

BROOKVIEW HOMES, INC.

MA 6-7403

COME and VISIT

The 4 Furnished

NATIONAL HOMES MODELS

\$20,000 to \$30,000 Inc. Lot

Just North of Maple Road (15 Mile)
3 Blocks West of Middlebelt
in Bloomfield

Open Daily 11:00 to 7:00

Closed Tuesdays



WHITE ALUMINUM
COMBINATION DOORS & WINDOWS
6 BEAUTIFUL COLORS!

OPEN: Monday - Thursday 8 A.M. to 5 P.M.
Friday and Saturday 8 A.M. to 9 P.M.

WOODCRAFT COMPANY

Serving Satisfied Customers Since 1923
1184 Grant, S. of Lincoln MI 4-0424

NEW ENGLAND-STYLE LIVING IN BLOOMFIELD'S FINEST COLONIAL COMMUNITY CONCORD GREEN

Combine the Luxury of New England with the Space of Beautiful Bloomfield in Concord Green—A Planned Community for Leisurely Living...
• Close to Birmingham shopping, St. Hugs of the Hills Church and Bloomfield Hills schools
• All phone and power lines are placed underground to preserve the beauty of Concord Green
• All homes are early American Colonials on 1/2-acre WOODED lots; are of approx. 2500 sq. ft. of living space with fireplaces, family rooms, sanitary sewers, gas and...



4 OR 5 BEDROOMS FOR ONLY **\$28,950** including Lot
2 1/2 BATHS-BASINETS
2-Car Attached Garages

WM. J. PULTE, INC.
MASTER BUILDERS
PULTE-BUILT means BETTER-BUILT
MI 6-0105 Open Daily 11 to 8 P.M.

Southfield Airman In Training Course

LACKLAND, AFB, Tex.—Air- been selected to attend the United States Air Force technical training course for intelligence operations of 17125 Dorset, Southfield, has specialists at Sheppard AFB, Tex.

for advanced training on the basis of his interests and aptitudes determined during basic training. Prior to entering the service, he attended Wayne State University in Detroit.

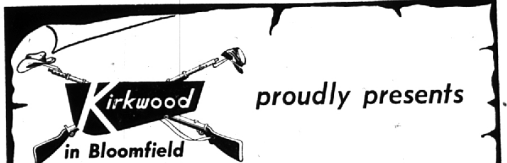
Use Classified Ads—They Sell!

YOU SEE

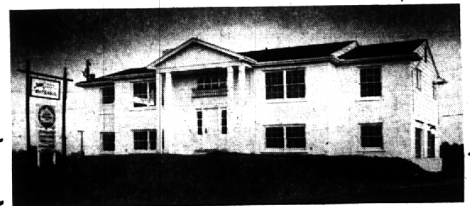
SOLD BROOK
300 SOUTH WOODWARD
MI. 4-6700

SHOWN BY APPOINTMENT

EVERYWHERE!



the Whitehall



best home for the money

For the second consecutive year a home designed for Thompson-Brown communities has been chosen "Best Home for the Money" in the State of Michigan by a distinguished panel of judges acting on behalf of American Home Magazine. This is the fourth American Home award to be granted designs featured by Thompson-Brown Company. This most recent national honor is but one of several granted our homes in the course of the last five years. We are proud of such recognition for it means our goal of producing finer homes for suburban Detroit is being accomplished.

AMERICAN HOME MAGAZINE

1961 AWARD WINNER

STATE OF MICHIGAN

featuring . . .

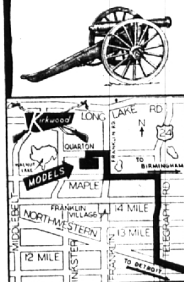
- Master bedroom suite
- Three twin-size bedrooms
- Living room, dining room, paneled family room, kitchen on upper level
- Huge activities room, hobby room, 2-car garage, laundry room on lower level
- Dramatic, curved stairway
- Three full baths
- Baseboard hot water heat
- Two natural brick fireplaces
- Glass Dor-Wal to patio
- 3,779 square feet of usable space for better living!

\$32,700

INCLUDING BASE PRICE LOT

Nine additional model homes open for your inspection. Priced **\$28,950**

Sales information office open from 11 a.m. to 8 p.m. daily and Sunday. Hours on Saturday from 11 a.m. until 6 p.m. For information call: MAYfair 6-7522.



Serving the People of Michigan Since 1924

THOMPSON-BROWN Company

79426 GRAND RIVER, Detroit 23 — Kenwood 1-8700