

A NEW COMPANY ORGANIZED EXCLUSIVELY
or the purpose of building

**FALLOUT
SHELTERS**

Phone
MI 7-3168

FHA Terms

P & W CONSTRUCTION CO.

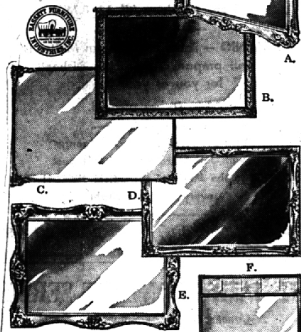
Free Estimate Phone 24 Hours

A Decorator's Dream in Mirrors

Genuine Pittsburgh Plate Glass
UNUSUAL VALUES

Your \$2095
Choice

These eloquently styled
Decorator Framed mir-
rors will add brilliance to
the decor of any home.
You have to see them to
appreciate their beauty.



Unexcelled Quality!

- A. French Antique White finish frame. Overall size 29" x 41"
- B. Rich Gold Metal finish Decorator frame. Overall size 30" x 42"
- C. Decorated Beveled. Cast metal corners. Mirror size 30" x 40"
- D. Metal Bronze finish, double frame. Overall size 32" x 44"
- E. Lovely Shaped Gold finished frame. Overall size 28" x 42"
- F. Brass finished frame with imported Italian "Inverline". Mirror size 33" x 46"



SELECT NOW FOR CHRISTMAS DELIVERY

**BIRMINGHAM PAINT,
GLASS & WALLPAPER CO.**

"Everything For The Beautification and
Preservation of The Home"

335 EAST MAPLE MI 4-3737

**The way you furnish your home—
REFLECTS YOU . . .**

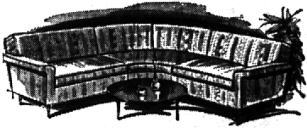
AND YOUR WAY OF LIFE!

Your home is a window to your personality, so let the finest side of you show through with . . .

- CUSTOM FURNITURE
- REUPHOLSTERY

. . . custom designed by Elliott's

Mr. Ross Elliott,
our representative, is in
Birmingham
Mondays, Tuesdays, Thursdays



OR 3-1225

ELLIOTT'S of Waterford

5400 DIXIE HIGHWAY

"Fine furniture and quality carpeting since 1924"

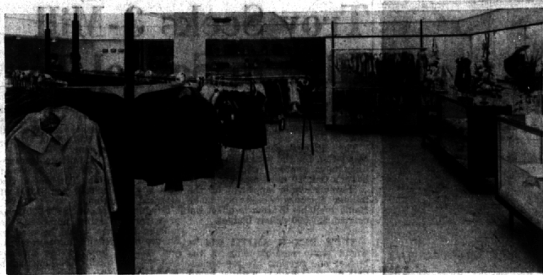
YOU SEE

**SOLD
BROOK**

300 SOUTH WOODWARD
MI. 4-6700

SHOWN BY APPOINTMENT

EVERYWHERE!



Departments Added

A shoe salon, an infants, children's and a relaxing suburban atmosphere of the Young Perfectionist Shop has been added to original store has been carried out in the B. Siegel-Kay Cooley Birmingham store. new area with the intimacy of a small shop.

**Seek to Assure
Right to Vote
For Presidents**

Birmingham City Clerk Irone Hanley is a member of the Constitutional Committee of the Municipal Clerks' Association, which will meet today in Lansing.

The group held its initial meeting there Oct. 5.

Miss Hanley said one of the chief concerns of this committee is to seek provision in the state constitution "that the legislature may enact laws that no person in Michigan will be deprived of the right to vote for President and Vice President electors regardless of length of residence in or out of state."

UNDER TODAY'S laws, many people lose the right to vote for President and Vice President because they move from another state to Michigan shortly before election time and thus do not meet the required residence period.

"We invite suggestions and ideas people may have regarding election laws," Miss Hanley stated.



chudiks

Choose the one you like best. You make your own selection in our "Big" hours and see at. MI 7-1100 Birmingham, Mich.

**Study Cost to B'ham
Of Federal Spending**

When the Federal government spends a billion dollars, what part of it comes from taxpayers in Birmingham? How much will this year's \$58 billion program cost locally?

With Government outlays rising all along the line and exceeding by far those of any other peacetime year, a study was undertaken by

System

(Continued from 1-A)

net increase of only 2.6 mills rather than five mills.)

HOW DID the school system fall into its predicament?

The answer lies in what is commonly referred to by the board of education as "the difficult years" (1957-60).

These "difficult years" stem from four major problems:

1. Building needs over the years have been so extensive that money has been diverted from the educational program in order to pay the building debt.
2. While a disproportionate share of local tax money was used to pay the principal and interest on the building debt, the community failed to face up to the problem of providing sufficient operating funds.
3. Rapid enrollment growth required additional personnel, supplies and equipment which absorbed funds earmarked for program improvements.

DURING THE 1959's enrollment grew from less than 4,000 to more than 12,000 while the professional staff increased from 165 to 500.

At the same time, the millage levy for operating costs remained relatively stable even though the cost of doing business increased significantly.

State and county financial support has been inadequate and uncertain. Such varying levels of support have stunted program improvement, planning, particularly when the community voted operating millage is hardly sufficient to maintain current standards.

In general, there seems to be a tendency to shift back to the local communities some of the financial burden formerly accepted by the state.

4. Finally, voter support has been inadequate to finance a "quality" system.

In 1957 a salary program recommended by a citizens committee required 11 mills for 1961-62, but only six mills were voted.

AGAIN IN MARCH, 1960, residents rejected a four-mill increase request and in June approved a 1.9 mill levy.

As Birmingham Schools Supt. Otis M. Dickey puts it, "We have delayed the decisions until now as to whether we will staff our schools with superior career-type teachers and follow through on major improvement program. (Next week: the building program)"

Moore

(Continued from 1-A)

reaction of the women after the concert, they got the message.

BROUGHT OUT in the lecture-serial was the importance of co-ordination between the accompanist and the soloist. He said the accompanist helps the soloist tell the stand every word a singer utters and this takes quite some doing.

"After all," said the two Englishmen, "we accompanists are remarkable people."

TO THE DELIGHT of the women, Moore mentioned that he made his debut in Birmingham—England, that is.

Moore concluded his remarks with a statement on his purpose of touring as a lecturer-recitalist: "to throw spotlight on the work the accompanist is doing. I hope you notice both the accompanist and the soloist and keep your ears open to both impartially. You'll receive much more pleasure if you do."

**Petersen Elected
To Safety Committee**

Hugo Petersen, 18249 Elizabeth, Birmingham, recently was elected to serve on the executive committee of the automobile and machine shop section of the National Safety Council.

The election was part of the National Safety Congress which opened in Chicago Monday and closed Friday.

Petersen is director of training and education of The Bendix Corp. in Detroit.

the Tax Foundation, a private organization that keeps tabs on such matters, to discover what the effect of a billion dollars is on the average pocketbook.

It found that it varies with income, but that, for the average family of four, a billion dollars is equivalent to \$19.

ON THE BASIS of average earnings in Birmingham last year, the local population, with its 8,200 households, has a \$224,100 involvement in every billion dollars that the Government spends.

Communities with lower earnings have relatively smaller participation and those with higher earnings, a larger share.

How does the Government raise the money? By direct taxes, by hidden taxes and by deficit financing, which means borrowing and going into debt.

The Tax Foundation speculates on what a family could do with the money it would save through a budget cut of just one billion dollars. In the case of the average Birmingham family, such a cut should yield an electric blanket or a toaster.

WITH A \$3 BILLION cut, a lawnmower or a vacuum cleaner could be bought and, with \$5 billion lopped off, a hi-fi phonograph or a dinette set.

To bring out how gigantic a sum a billion dollars is, the following is cited: Suppose a business were begun at the time Christ was born. Each and every day thereafter it lost \$1,000. To date, the losses would be \$27,715 million. Not for another 718 years would it reach a billion.

If the average family in Birmingham had to plunk down on the barrelhead its proportionate share of the \$58 billion being spent this year, it would have to produce \$2,376.

For the community as a whole, the total would be over \$19,720,000.

**PHARMACY
FACTS!**

We are not able to supply Asian Flu Vaccine BUT we would like to suggest another method of protection against the common cold and its complications.

LILLY'S ENTORAL CAPSULES

20 Count \$1.17
60 Count \$2.97

PARKE-DAVIS IMMUNOVAC TABLETS

20 Count \$1.35
100 Count \$5.31

SHARP-DOHME'S VACAGEN TABLETS

20 Count \$1.50
100 Count \$6.08

Prescriptions called for promptly and delivered quickly.

CALL MI 4-5060

MILLS PHARMACY

1740 W. Maple at Chesterfield
FREE PARKING

Club de Paris Forms Here

A new Birmingham club with a French accent has been organized. Called the "Club de Paris de Birmingham," the group was formed for the informal study of France's language and culture.

A travel film on France and discussion of future club programs will highlight the club's next meeting at 8 p.m. Sunday at Birmingham Showcase, 136 Brown.

FRENCH refreshments will be served and an informal practice session in speaking beginning French will be conducted.

Organized by language students

of Mr. and Mrs. Jean-Pierre Au-techard, 645 Purdy, Birmingham, who will assist at meetings, the club is open to all Birmingham area residents.

Further information concerning "Club de Paris de Birmingham" may be obtained from the club secretary, Mrs. James McClure, 771 Henrietta, Birmingham.

OTHER CLUB officers are Jack Harned, 828 Greenwood, Birmingham, president; Edward Reid, 247 Clifton, Bloomfield Township, vice president; Mrs. Gilbert Omos,

'Singing Cop' Visits Hills' Schools

Lt. Willburn Legree, formerly with the Flint police department and known as the "Singing Cop," will be at St. Hugo of the Hills and Vaughan schools Monday and at Our Lady Queen of Martyrs and Whitfield Schools on Oct. 30.

The programs are part of Bloomfield Hills' safety program. Larry Miller, state trooper from Pontiac, is associated with Bloomfield's Green Pennant drive.

28437 Red Leaf Lane, Southfield, treasurer.

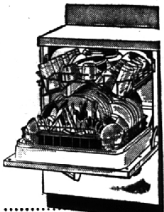
IS YOUR NAME GUS?

Are you married to a girl named Gladys? Does she have blonde hair, blue eyes, and a way about her that you like? Is she very pretty, but a little worn looking after the evening meal and dishes? Do you find her soft, white fingers gradually getting a little rough to the touch?

Gus, old boy, we suggest that you get Gladys a new Kitchen Aid dishwasher. She'll be able to relax after dinner, and slip her soft, white fingers into your hand. You, sir, will be her hero.

We're having a BLITZ SALE Friday, October 20th from 10 'til 10, and our prices are mighty low. We'll handle all the "putting in" too, if you like. Come in, Gus, and get with it.

**NEW
KitchenAid**
Superba VariCycle dishwasher



**HAWTHORNE
ELECTRICAL COMPANY**
Since 1914
162 N. Woodward, Birmingham
MI 4-2200

Handles a whole day's dishes for most families . . . capacity for 12. But that's not all—see every new feature of this all-new KitchenAid —on display now.

PRE-CHRISTMAS SALE

1960 CHRISTMAS CARDS



A special purchase of Hallmark & Norcross cards for Christmas enables us to make this special offering to save you up to 50% and offer you imprinting service at the same time . . . if you make your selection this next week. (Oct. 22 through Oct. 29)

\$3.50 SPECIAL VALUE BOX	EXAMPLE — 100 CARDS
25 to a Box—All of a Kind Cards	\$14.00 Reg. Price
THIS SALE ONLY \$1.75	3.75 (Imprint)
	\$17.75 Value
IMPRINTING — IF YOU WISH	THIS SALE — \$ 7.00
25 Cards \$1.25	IMPRINTING — \$ 3.75
50 Cards \$2.00	\$10.75
75 Cards \$3.50	
100 Cards \$3.75	
	YOU SAVE \$7.00 ON THIS PURCHASE

"FROM YOUR HOUSE TO OURS"	\$1.00 Box of 25 Cards (For families of 2-3-4, or more)
TYPE CARDS (25 Count)	NOW 50c 50% Saving on this order
Reg. Price	Box of 100 Cards, \$4 Value
\$2.00	Next Week Only, \$2.00
1.25 Imprint	If you sign your name personally.
\$3.25 Total	If We Imprint, you still save 20%
\$2.25 TOTAL	
YOU SAVE \$1.00 ON THIS ORDER	

This Is Your Chance To Build Up Your Christmas Savings Funds — Without Stretching Your Budget.

FREE PARKING FOR 2 HOURS AT MAPLE-CHESTERFIELD
ASS'N PARKING LOT, REAR OF STORES. (Entrance from Chesterfield)

Usually — "ALWAYS A PLACE TO PARK" your car

MILLS PHARMACY

MI 4-5060