

Milky the Clown To Appear at Fair

BLOOMFIELD TOWNSHIP—A performance by Milky the Clown is planned for the Bloomfield Village School PTA Fair Oct. 27. He will perform at 8:30. The fair, which begins at 4:30, will also feature a witches' cave, cakewalk, games, movies and a village store with items made by mothers of students. Buffet dinner will be served. There will also be a snack bar. Co-chairmen of the annual fair are Mrs. Kurt Hoffman and Mrs. Will Scott.

Fire Prevention Week Noted by Fire Chief

BLOOMFIELD TOWNSHIP—Fire Chief Vally Yanuszeki warned residents, in an open letter this week, that there is nothing mysterious or complicated about the causes of most fires. Reminding them that Fire Prevention Week, Oct. 8-14, includes Oct. 9 as a grim reminder of the 1871 Chicago fire, the fire chief noted that a brief lapse in carefulness sparked the fire that resulted in 200 deaths, the ruin of almost 17,000 buildings in 2,100 acres.

Direct losses were \$168 million in this fire which left 107,000 homeless. Yanuszeki said fire loss each year in United States homes adds up to about 600,000 fires, 6,000 fire fatalities and a \$500 million loss.

TOTAL FIRE LOSS in the U. S. last year was one-and-a-half billion dollars in about 2 million fires in which 4,815 persons lost their lives, the fire chief observed. Fire deaths in homes result from failure to observe the simple rules of fire safety, he said, citing causes ranging from smoking in bed to leaving children alone in the house or letting youngsters play with matches. One fourth of all fires is caused by matches and smoking; another 20 per cent are due to misuse of electrical equipment, Yanuszeki noted.

Electrical circuits are overloaded and overused and rubbing that is not cleared out are other fire causes listed by the township chief.

ON THE PREVENTION side, the fire chief said a good housekeeper keeps the attic free of trash, checks the basement for combustibles such as old newspapers and magazines, rags, broken furniture or paint stored near the furnace. Yanuszeki suggests throwing out all unneeded combustibles. If burning these, Yanuszeki advised, use an approved burner in a cleared area, stand guard till the fire is out and pick a time when the smoke will dissipate harmlessly.

A burning permit is required and may be obtained without cost from any of the fire stations, he said. Children should be left in the care of a dependable babysitter, he advised. Names and addresses along with emergency phone numbers should be left with the sitter, when parents are away from home, the fire chief said.

YANUSZEKI advised residents to report fire immediately—not to depend on someone else to do so. The first five minutes is the critical period in almost every fire, he said. The fire chief issued an invitation to residents to visit their area fire station and meet the firemen.

Charge Osteopath From B'field Twp. In Abortion Case

BLOOMFIELD TOWNSHIP—A Bloomfield Township osteopath was arraigned Oct. 5 on charges of manslaughter by abortion in the death of a woman. He is charged with felonies and misdemeanors and is held in lieu of \$7,500 bond each, pending examination Oct. 23.

The arraignment took place before Judge Robert H. Lorion of Livonia Municipal Court who will also conduct the examination. The three were arrested Oct. 4 by State Police from the Redford Post and Livonia police. The warrant was issued by the Wayne County prosecutor's office.

THE WARRANT charges the trio took part in an illegal operation Sept. 22 at Dr. Weiss's Livonia office. The operation resulted in the death of Mrs. Dorothy Engle, 37, according to the warrant.

Redford post detectives said they and Livonia police have been investigating Dr. Weiss for several months. An anonymous phone tip supplied the information about Mrs. Engle's death. Although no charges were filed on another felony, detectives said Mrs. Engle's death certificate was also falsified by Dr. Weiss. The osteopath is awaiting trial in Detroit on a charge of obtaining drugs by fraud, deceit and subterfuge.

DR. WEISS, whose offices were formerly located on W. Eight Mile Road, Detroit, pleaded innocent to the charge following his arrest in July by officers from the Detroit Police Narcotics Bureau. Narcotics authorities charged he had purchased 30 cubic centimeters of a trademarked narcotic for a patient who did not exist and who, Weiss told the pharmacist, who sold him the drug, was "terminally cancer patient." The abortion by manulagering charges carries a maximum penalty of 15 years in prison and a \$7,500 fine.

Extention

(Continued from 1-E) four farms from Greenfield to Southfield. LINSSEMEYER explained to residents at the meeting that the county's project will not be forced on any one of the communities involved. However, he added, other communities that want the road improvements may bring pressure on Beverly Hills to cooperate. "All we can do," Linssemeier stated, "is to take your suggestions into consideration with the county to develop an alternate route."

commission engineer, asked the village for a decision on the village's participation in the project by Oct. 16. The road commission plans to present its proposal to the County Board of Supervisors this month. COUNCILMAN Hugh G. Allerton Jr., who indicated he is opposed to extending 14 Mile, asked the residents if they would approve of the extension if precautions were taken to keep traffic out of the adjacent residential area. There were no takers in the crowd. Council President Marvin B. Cline told the gathering, "We are going to notify the county that we do not feel cutting 14 Mile Road through is beneficial to the village. I can't see why it isn't possible to avoid it."

COME and VISIT
The 4 Furnished
NATIONAL HOMES MODELS
\$20,000 to \$30,000 Inc. Lot
Just North of Maple Road (15 Mile)
3 Blocks West of Middlebelt
in Bloomfield
Open Daily 11:00 to 7:00
Closed Tuesdays



\$26,500

Extremely well priced and in excellent condition. 3 bedrooms, modern kitchen, breakfast room, screened and glassed porch, games room, full basement and a 100'x130' site.



\$46,500

Brick and clapboard BiLevel ranch with 3 bedrooms, bath, 2 lavatories, breakfast room, full dining room, games room with bar, enclosed terrace, carpet & A real honey.

BOTH PROPERTIES ARE EXCEPTIONAL OFFERINGS AND WELL WORTH SEEING.

Johnstone Johnstone
REALTORS
MI 7-0200
276 E. Brown

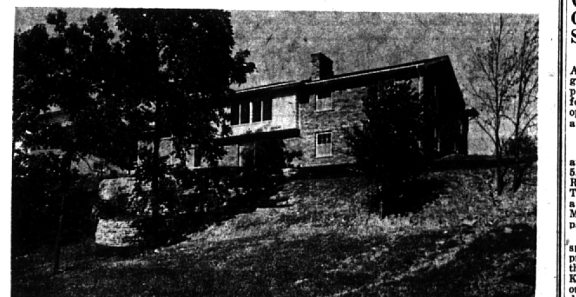
EARLY AMERICAN COLONIAL



4 Bedrooms—2½ Baths—2 Fireplaces—Family Room—Marble Foyer & Powder Room—14 x 13 Dining Room—Deluxe Kitchen—Attached Garage. Designed by Registered Architect—Interior Colors by Professionals—Grounds by Landscape Architect. Lot 170 x 250. \$49,900

New Model Home — Immediate Possession. Open Daily 2 to 6:30 P.M.
5420 LAHSER ROAD — 400 feet North of Quanton
R. J. DETTLING CO. IN ASSOCIATION WITH LLOYD E. SMITH HOMES INC. PH. WO 1-1317

IN HICKORY HEIGHTS



Water — Sewer — Gas — Paved Roads
MAGNIFICENT VIEW from this new Hillside house, 3 bedrooms, 2½ baths, separate dining room, 32 ft. lower level family room, 2 fireplaces, frigidaire oven, range, dishwasher, large work, hobby and storage areas, includes screens, landscaping.
38,300
MODEL OPEN DAILY NOON UNTIL SIX
At Adams Road & Satterlee, 2½ miles North of Maple Model Phone MI. 4-9763
ROBERTSON BROS. CO.
LI 9-3500

Home

(Continued from 1-E)

testing of floor joists—most of which were salvageable. They have watched Holmes sound the walls of the garage, check the well, examine the chimney.

And in between, they have bought a lot of materials for them to build a house, Mrs. Jenkins says ruefully. "I've ruined more pairs of them."

THE JENKINS, who label themselves "the outcasts of Mortgage Flats," say they have a running account with the doctor. For tetanus shots, "We've all stepped on rusty nails at least once."

Now the preliminaries are over and the Jenkins know that the best of the old will be part of the new.

Still it looks sort of like the ruins of Pompeii, Jenkins says. "Wonder where we should put the Christmas tree," his wife muses.

Set Public Hearing On Sewer Lateral In Doherty Estates

WEST BLOOMFIELD—Nov. 1 was set for a public hearing on Doherty Estates sewer lateral at meeting of West Bloomfield Township Board last week. Other business before the board included plans for repairing leaks in the township hall roof set of specifications for repairs will be set up and bids taken on the work. An amendment to the zoning ordinance was passed, setting a \$100 fine and/or 90 days imprisonment for impersonation of a police officer.

Approval of a multiple-zoning ordinance in the township zoning ordinance was deferred until the next township board meeting.

City Engineers Get OK for Kelley's Sewer, Water Plan

LATHRUP — City engineers Ayras Lewis, Norris and Max gave the go-ahead last week to proceed with a two-year old plan for water and lateral sewer development in property owned by Mr. and Mrs. Charles D. Kelley.

THE ALN&M REQUEST for approval involves subdivisions 4, 5, and 6; property south of 11 Mile Road and the city hall property. The project will be undertaken as a private development by Mr. and Mrs. Charles D. Kelley and will be paid for by them.

The motion, granting approval, specified that the city's plan to improve water distribution throughout the city must be done first. The Kelley water lines must be coordinated with the city's plan under the motion.

S'field Bridge Club Begins Meetings

SOUTHFIELD — Mrs. Mae Grainer will direct the Southfield Duplicate Bridge Club which will meet every Tuesday evening at 8 p.m. in the Ledger School cafeteria beginning Tuesday.

\$27,500

Colonial Ranch on 7/8 acre lot with 58 large trees, Birmingham Schools, 3 bedrooms, 2 full baths, large 15' x 18' patio, Family room 14' x 16'8" with fireplace, whole attic floored with pull down stairs for extra storage, attic fan, dishwasher, incinerator, carpeting, lovely Subdivision with no through streets.

HOUSEMAN SPITZLEY

JO 0-6126 MI 4-7422 MA 6-5597

ERB-RESTRICK — B'HAM'S NEWEST AND MOST MODERN HOME MODERNIZATION CENTER PRESENTS THEIR FALL LINE OF FINE PANELINGS — SHUTTERS — AND LOUVERED DOORS.

PLYWELSH PANELING — FINE FURNITURE

Finishes by "BRUCE"

in the most wanted woods for the Colonial or Contemporary Home.

CHERRY \$14.95
WALNUT \$14.95
ANTIQUÉ BIRCH \$13.45
RUSTIC BIRCH \$12.45
DRIFTWOOD ASH \$13.95

All ¼", 4 x 8' Panels

INTERIOR MOVABLE SHUTTERS

That Extra Touch Makes The Difference

6" x 18" — 88c 9" x 24" — 2.10
7" x 20" — 1.39 11" x 20" — 2.10
7" x 24" — 1.79 11" x 24" — 2.45
9" x 20" — 1.75 12" x 20" — 2.25

Other sizes Available

BIFOLD DOORS

MAHOGANY

24" x 80" \$11.95
36" x 80" \$14.95
48" x 80" \$22.88

BIRCH

24" x 80" \$12.95
36" x 80" \$15.95
48" x 80" \$22.95

LOUVER

24" x 80" \$15.95
36" x 80" \$17.95
48" x 80" \$31.95

More sizes available

Saloon Type Doors

THE IDEAL DOOR FOR THAT ODD OPENING

30" x 48" \$11.69
32" x 48" \$11.69
36" x 48" \$11.69

Per Pk.

WHITE PINE LOUVERED DOORS

1'0" x 6'8" — 5.25
1'3" x 6'8" — 5.65
1'6" x 6'8" — 5.95

1½" Thickness Available in many other sizes

Every Home Needs An Accent!
WEATHER-MATE

STYRENE SHUTTERS AND THEY COST FAR LESS!

WON'T ROT LIKE WOOD, WON'T DENT LIKE ALUMINUM.

COST PER PAIR

Wid 14" 16"
35" \$5.89 \$6.40
47" 7.25 7.85
55" 7.98 8.75
59" 8.49 8.97
71" 10.49 10.69

OTHER LENGTHS: In inches: 24, 32, 39, 42, 51, 63, 67, 80.

* CONTINUOUS LOUVER STYLE LEAVES WHITE OR LEAVES ANY COLOR
* EASILY INSTALLED * HARDWARE INCLUDED

PLEASE NOTE: STYRENE PLASTIC IS ALSO USED FOR UNDERGROUND PIPE BECAUSE IT NEVER WEARS OUT!

2 COMPLETE HOME MODERNIZATION CENTERS

ERB-RESTRICK

umber Company

803 SO. MAIN, ROYAL OAK LI 8-4000 425 ETON RD. BIRMINGHAM MI 4 5300

OPEN DAILY 7:30-5:30 7:30-5:30 FRIDAY 9:30-5:00 SATURDAY