

Hollywood Adjustable WALKER
 Easy To Use
RENTAL & SALES
 • HOSPITAL BEDS
 • BED SIDES
 • WHEEL CHAIRS
 • WALKERS
 • CRUTCHES
MICHIGAN FIRST AID
 Invalid needs—sick room supplies
 LI 2-3027 JO 4-6847
 1621 S. Woodward, R. O.
 3 doors north of 10 Mile

EDWARD J. HALEY

Funeral Director

24525 Northwestern Highway
 (At 10-Mile Rd.)

Prescription for Profit: A Want
 Ad by phone or mail.

Peoples Federal Selects Manager

Leo F. Drolshagen, Sr., president of Peoples Federal Savings and Loan Association of Detroit, has announced the appointment of William D. Wismer as manager of the new branch office of the association at 3100 N. Woodward in Royal Oak.

Wismer has been active in financial circles in the Metropolitan Detroit area for many years. He is a member of the Society of Residential Appraisers, a member of the National, State, and Detroit Real Estate Boards and a member of the Detroit Boat Club. The new branch office of Peoples Federal Savings will be open for business Nov. 27.

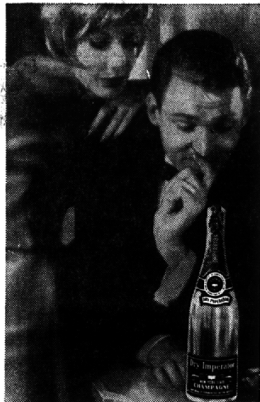
Looking for a job... a home... a special service? See the Want Ads.

NEW JET-HEET!
TORRENCE OIL COMPANY
 HEATING DIVISION

COMPLETE OIL-HEAT SERVICE

SALES — INSTALLATION
 FURNACES — BOILERS — WATER HEATERS

WE SERVE THE SUBURBS



Breathtakingly Beautiful
Dry Imperator Golden Service

America's finest champagne to now in the world's most beautiful bottle... "Golden Service"

Dry Imperator • new york state • champagne

Michigan Distributors, VIVIANO IMPORTERS, INC. 2030 West Fort Street, Detroit, Michigan

Accepts Gavel

Walter A. Guthrie (left), 750 Oakleigh, Bloomfield Hills, receives the gavel of chairmanship from William E. Slaughter Jr., 32949 Bingham Lane, Bingham Farms. Guthrie, who is Michigan division manager of Mobil Oil Co., has been named chairman of the Associated Petroleum Industries of Michigan succeeding Slaughter, who is president of Aurora Gasoline Co. The association represents all oil companies marketing in Michigan.

Name Moore Executive VP

James Cooke, 1122 Ardmore, Birmingham, president of Allied Supermarkets, Inc. (formerly ACE-Wrighty Stores, Inc.) has announced the appointment of L. R. Moore, 1654 Keller, Bloomfield Hills, as executive vice president of the national supermarket chain. Moore moves into the position from his previous post of senior vice president.

A veteran of over 25 years in the grocery business, Moore has been associated with Allied Supermarkets or its divisions since 1934, when he joined the company's Oklahoma Division (then Humpty Dumpty Stores) as a part-time clerk. In his rise to his present office, he has served as a store manager, supervisor, sales manager and division manager. In 1959 he was appointed vice president of the corporation and general manager of the Michigan division, the company's largest. In 1960 he was elevated to senior vice president.



MOORE

B'ham Dealer Shows Mercury Meteor

A Birmingham automobile dealership, Bob Bost Lincoln-Mercury, Inc., 479 S. Woodward, has been appointed to sell the Mercury Meteor, a completely new-sized car which will be introduced this month.

The Mercury Meteor will be unveiled across the country next Thursday, at about 2,000 dealerships in the Lincoln-Mercury organization.

The Meteor is regarded by the Lincoln-Mercury Division as a balance between the industry's compact and big cars. Compared to its companions in the Mercury line, the Meteor is nine inches longer than the Comet and nearly a foot shorter than the Monterey.

Accounting Group Hears 'Value' Talk

The regular monthly meeting of the Oakland County Chapter of the National Association of Accountants was held last Thursday.

Howard L. C. Leslie, vice president of Value Analysis, Inc. Schenectady, N. Y., was the guest speaker. His subject, "Value Analysis in Accounting Management" covered the responsibility of the accountant in value analysis, and how he can further the philosophy of this concept in his company.

Chairman of the meeting was C. Arnold Carlson, 439 Tilbury, Birmingham. Carlson is a partner in Peas, Starwick, Mitchell & Co.

Jens Attends GM Conference

Hans C. Jens, of Derby Junior High School, Birmingham, attended the 10th annual General Motors Conference for secondary school counselors. He was one of 25 educators from 10 states participating. Sponsored by GM Education relations section of public relations staff, the conference acquaints educators with personnel policies and programs relating to employment of high school and college graduates.

The counselors visited GM Technical Center, GM Institute and Fordist division.

Elect Vice President

Willard P. Drake has been elected vice president and general manager by the board of directors of James A. Moynes & Co., Detroit, manufacturers and installers of custom woodwork. Drake was formerly vice president of Woodwork Corp. of America, Chicago, and has served in the custom woodwork industry for many years.

ANNOUNCEMENT
 Now Under Detroit Ownership

BAHAMA HOTEL

Directly on the Ocean
 In Fort Lauderdale, Florida

- Hotel Rooms and Efficiency Apartments
- On famous "Gold Coast" Beach
- Air Conditioned
- Heated Fresh Water Pool
- Famous "Chart Room" for Cocktails and Superb Dining



HIGHLIGHT YOUR FLORIDA VACATION!
 See "WOODY" WOODBURY
 FLORIDA'S FAVORITE ENTERTAINER
 Appearing Nightly at THE BAHAMA



• Charter Boats, practically at your door, for the finest deep sea fishing!



PAUL F. TERNES
 Owner-Operator
 DETROIT RESERVATION NUMBER
 Vermont 9-2277

WHEN to SELL Securities for Income Tax Savings

Whether you hold securities through December 31, 1961, or sell before year end, can bear importantly on the income tax you will pay.

Now is the time to review your portfolio for income tax purposes.

Send for Watling, Lerchen's Fact-Packed Booklet: "1961 Security Transactions."

Watling, Lerchen & Co.

Members New York Stock Exchange

Call MI 6-9100, or visit Watling, Lerchen & Co. offices in the Crown Bldg., W. Maple & Cranbrook Rd., Birmingham, Michigan. Additional offices in Ann Arbor, Pontiac, Kalamazoo, Jackson, Dearborn, Detroit and New York.

WATLING, LERCHEN & CO.
 Crown Bldg., W. Maple and Cranbrook Rd., Birmingham, Michigan

Please send me your free booklet "1961 SECURITY TRANSACTIONS."

NAME _____
 ADDRESS _____
 CITY _____ ZONE _____ STATE _____

SERVING MICHIGAN INVESTORS SINCE 1916

POTTER Moving & Storage Co.



no. 1 specialist in packing!



POTTER Moving & Storage Co.

2253 COLE MI 4-4612
 No. 1 on U.S. Highways
 No. 1 in Service
 No. 1 in Your Community

There's DOUBLE Satisfaction When You Save "The American Way"

1. Your savings are invested locally—help folks in this area buy homes—provide employment for local people who build these homes, equip and maintain them.

2. Your savings earn the highest return consistent with safety.

3 1/2%
 current rate on any amount

All Savings Insured to \$10,000
 By An Agency of the U. S. Gov't

AMERICAN SAVINGS

Michigan's Largest State-Chartered Savings and Loan Ass'n.
 MAIN OFFICE: WOODWARD AT CONGRESS

14 MILE near CROOKS RD. in CROOKS DEXTER at CORTLAND W. 9 MILE near COOLIDGE in OAK PARK TELEGRAPH of MAPLE in BLOOMFIELD
 EVERHOS at W. 7 MILE PORT STREET at MILITARY 7 TELEGRAPH of SCHOOLCRAFT VAN DYKE at E. 7 MILE