

Library

(Continued from 1-E)

known to the judges. Each essay bore only numbers as identification.

ALL DURING THE week of Nov. 19, Monday, Tuesday and Wednesday the open house will continue with hostesses from various sections of the committee served by the library available to explain new library services and serve coffee.

Beginning Nov. 30, the library will be open longer and oftener. The hours are: Monday through Thursday—8 to 8:30 p.m., Tuesday and Thursday nights—7:30 to 11 p.m. and every Saturday from 11 a.m. to 3 p.m.

AND, LIKE frosting on the cake, is the Franklin Forum series of four lectures being sponsored by the newly organized Friends of the Franklin Library, under the enthusiastic leadership of Mrs. Paul Robertson.

Face-etter, Mrs. Charles Peterson, author and illustrator of three nationally known "frat books" on nature for children will show the step-by-step stages of publishing

Southfield Drain Plan Approved

SOUTHFIELD — The Southfield road storm drain was approved last week opening the way for a joint construction cost sharing plan by Southfield, the State Highway Commission and Oakland County.

The storm sewer will be along Southfield Road between Eight Mile and north of Nine Mile.

So, this is what Town Criers Teb Baward and Ricke Kern will be shouting about. It's a bell-ringer for Franklin.



Lathrup Club Plans Holly Ball

LATHRUP—Mrs. Martin Hartwell, Mrs. James Kalch and Mrs. Clarence DeGroot admire one of the decorations for the Lathrup Woman's Club Dec. 2 Holly Ball. The annual charity dinner-dance will be at the Rosedale Community House in Detroit. Mrs. Hartwell is chairman of the dance; Mrs. Koich, co-chairman and Mrs. DeGroot, decorations chairman.

Damage Extensive In Trailer Fire

SOUTHFIELD—Firemen believe a fire in a house trailer at Fona Trailer Park may have been caused by a defective oil furnace. The trailer's owner is Chester Miller. The fire took place Friday at 4:35 p.m. Damage was extensive, firemen said.



\$27,900

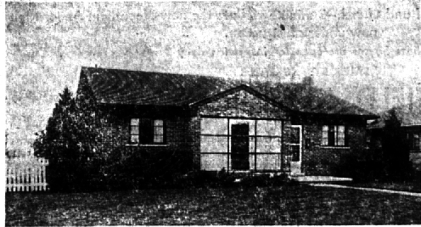
Here's an outstanding Ranch in an excellent location. 3 bedrooms (one with paneled wainscoting), large living room with dining "L", paneled and glassed sun room, full basement, king size games room with bar, work shop, carpet, gas heat, disposal and a nice 65' site.

We believe you will like this home. May we show it to you?

REALTORS
MI 7-0200

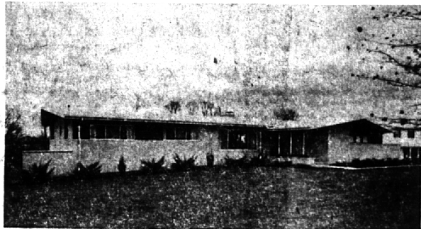
Johnstone
Johnstone

Happiness



Has a way of expressing itself in this trim and immaculate brick ranch set on a pretty picket-fenced corner site. There are 3 excellent bedrooms, each with a 12 foot measurement and served by a glistening tile bath. The cheery, convenient kitchen beckons "Mom" overlooks the rear yard so that young children are in sight, and has that handy breakfast and sandwich space. Superbly paneled recreation room, extra lavatory, solid side drive and provision for a future breezeway and garage make this a home YEARS TO COME! Call and see today. \$21,500.

Tired



of seeing the same old floor plans and stereotyped feeling of "nothing new"? REFRESH YOURSELF by making an appointment today to see this distinctively different contemporary ranch. An exciting air of openness extends from the traffic-free living room, through the unusual step-level family room, and into the fireplace-walled separated dining room. A fully exposed lower level "teen-fun" room, paneled in rich and durable mahogany and with its own fireplace, gives the younger members of the family a room of their "very own". 3 twin bedrooms, 2 1/2 decorator tile baths, superb kitchen with all built-ins and carpeting throughout COMPLETE THE PICTURE. \$42,500.

HALL & YOUNG

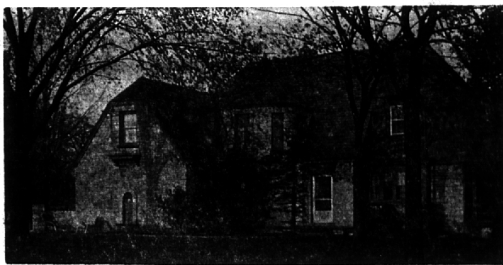
BIRMINGHAM OFFICE REALTORS BLOOMFIELD OFFICE
345 S. Woodward MI 6-7900 4114 W. Maple MA 6-2595

CHARTER MEMBER

INTER-CITY REAL ESTATE REFERRAL SERVICE, INC.

from cities across America... buyers for Birmingham & Bloomfield Homes

COGSWELL COTTAGE



Open Friday
November 17
2:30-4:00 P.M.

English
Architecture
Lannin Stone
Under \$35,000
Bloomfield Hills
Schools

Exceptional Value, a Family Home...
Secluded location with beautiful trees...
Walk to Schools and transportation...
Dark room, Panneled Recreation Room...
Four bedrooms...
Three and one-half baths...



FRED PIERCE, INC.

460 North Woodward
(One block North of Demary's)

Realtors

MI 7-1414

Lathrup Players' Comedy Reveals Just 'Who's Who'

LATHRUP—According to legend there is a way to prove a real princess. But how does one find a real vicar in a crowd of men all dressed exactly alike in black suits and clerical collars?

Is there any test when they all claim to be the rightful vicar? The outcome is hilarious in the Lathrup Players production of "See How They Run," by Philip King, to be presented the evening of Nov. 24 and 25. Curtain time is 8:30 p.m. in Fellowship Hall of Community Congregational Church, Lathrup.

THE PLAYERS WILL also feature an art show along with the performance showing the newest efforts of local painters. Guests will be invited to linger after the performance to meet the cast, view the art show and enjoy coffee and snacks.

Included in the cast of "See How They Run" are Ted and Jerry Mansfield, Marge and Glenn Farison, Elmer Craig, Fran Cogger, Bob Girvin, Archie Carmichael and Bill Bush. Director is Ann Gould.

S'field High School Cast Set to Present Musical Comedy

Two performances of Southfield High's 1961 all-school play, "Giri Cray," are scheduled for this weekend. The play will begin at 8 p.m. on Friday and Saturday nights in the school auditorium.

Leading roles in the comedy will be portrayed by Don Armstrong, Eileen Jarkack, Richard Bohn, Gerald Grandmaison, Jan Chapman and Sue Arsell.

The Southfield High orchestra, directed by Mr. John Caldwell, will provide the performance with selections from the original Broadway musical. Director of the play is Mrs. Virginia Borta.

Other students with key roles are Larry Graber, Mitchell Pollak, Dick Woroszew, Ron Tauber, Pat McAfee, Pat Smythe, Cheryl Commons, Diana Murphy, Barbara Lutz, Mike Knoke, Stuart Levine and Steve Cooper.

The Michigan State Board for Libraries was established by the legislature in 1937.

GIVE YOUR ROOMS ADDED BEAUTY FOR THE HOLIDAYS!

Select The Finest In Wood Paneling From our New Modern Store in B'ham.

You Can Have A Beautiful Wood Paneled Room at Half The Usual Cost.



NEW PIONEER PREFINISHED PANELING

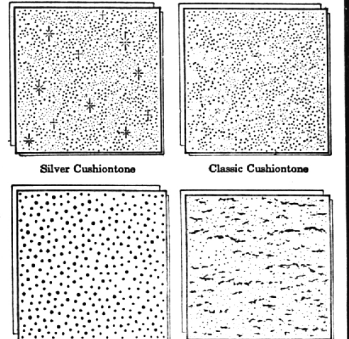
SHADOW - TONE

New touch in light or dark finish. 1/2" - 4 x 8' sheet \$8.95

SANDEL WOOD & BLONDE 1/2" - 4 x 8' sheet \$7.45

PILGRIM BIRCH 1/2" - 4 x 8' sheet \$12.45

SELECT A NEW ARMSTRONG CEILING TO GO WITH YOUR NEW PANELING.



WHICH ONE WOULD YOU CHOOSE? There are many more on display for you to choose from.

- ACOUSTICAL
- WASHABLE
- WON'T CHIP, CRACK, OR PEEL.
- CAN BE PAINTED

This Special's WEEKLY Full Random 12 X 12 \$9.50

BUY BOTH NOW! SAVE \$66.45

All-new '925" model DEWALT POWER SHOP



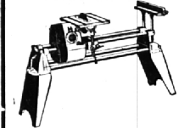
925 Deluxe plus 33 PIECE CHEST O' TOOLS



Come in and see a 'double' bargain in workshop tools... all-new DeWalt Power Shop PLUS 33-piece chest full of tools most used by shopmen. You get genuine DeWalt quality tools, not promotional substitutes. Buy smart... buy both together... and SAVE BIG \$66.45 now! For limited time only. See us today.

SEEING IS BELIEVING! YOU CAN BECOME A WOODWORKING EXPERT

YUBA SHOP WITH Mark 5 MAKES IT EASY!



You can do any woodworking around the house with a SHOPWITH MARK 5. But anything we tell you here won't convince you as well as a SHOPWITH demonstration in our store. The SHOPWITH MARK 5 is a complete home workshop in one compact unit... a Saw, Sander, Drill Press, Horizontal Drill and Lathe. And only 1/2 the cost of a shop full of individual tools. The money you save on home repairs and furniture making will quickly pay for your SHOPWITH... and you'll enjoy pleasurable, relaxing craftsmanship—even if you're a novice.

SHOPWITH is complete... 5 tools in 1. Nothing extra to buy. Includes built-in 1/2 H.P. motor, speed changer and bench... ONLY \$299.50 EASY TERMS

FLOOR TILE

ARMSTRONG ASPHALT-EXCELON 80 Pct. 45 Sq. Ft. Per Ctn. C. Colors—\$5.15 Ctn. E. Colors—\$3.99 Ctn. D. Colors—\$6.50 Ctn.

Add Old-World CHARM



LOUVER DOORS SHEER DECORATING MAGIC This Week's Special on Louver Doors

1 1/2 x 6 - 1 1/8 WHITE PINE \$5.25
1 3/4 x 6 - 1 1/8 WHITE PINE 5.65
1 1/2 x 6 - 1 1/8 WHITE PINE 5.95

1 X 12 SHELVING LUMBER \$5.45 sheet A-GRADE PANELS 12c Lin. Ft.

3 COMPLETE HOME MODERNIZATION CENTERS

UNRESTRICTED

Lumber Company

803 SO. MAIN, ROYAL OAK LI 8-4000 425 ETON RD., BIRMINGHAM MI 4-3300

OPEN DAILY 7:30-5:30 7:30-8:30 FRIDAY 7:30-5:00 SATURDAY

HOME OF THE HOUSE DOCTOR