

**Kresge's**  
The family choice

Small payment holds your purchase in layaway.

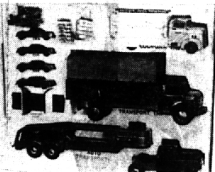


**MANAGER SPECIALS**

Thursday  
Friday  
Saturday

Nov. 16, 17, 18

**"Marx"**  
**27-PC CARGO TRUCK SET**



14.95 Value  
27" Auto Transport  
19" Construction Transport Truck  
**8.99**  
DISCOUNT PRICED

Plus 4 cars, 12 cases of toy coca-cola construction crew.



**THREE KEYS GAME**

by "MARX"

**4.99**  
DISCOUNT PRICED

TV Advertised at 8.99

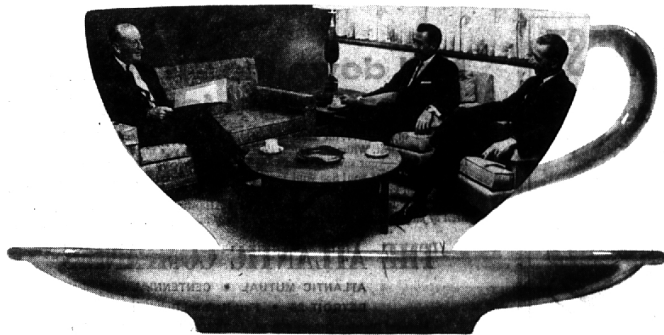
Fun!  
Exciting!  
22" long!

Winner automatically receives free prize

West Maple at Henrietta, Birmingham

**"CHARGE IT at KRESGE'S"**

**"HOW DO YOU LIKE YOUR COFFEE?"**



...privacy and comfort are part of the service at our new, informal "trust suite" in our Woodward-Hamilton Office

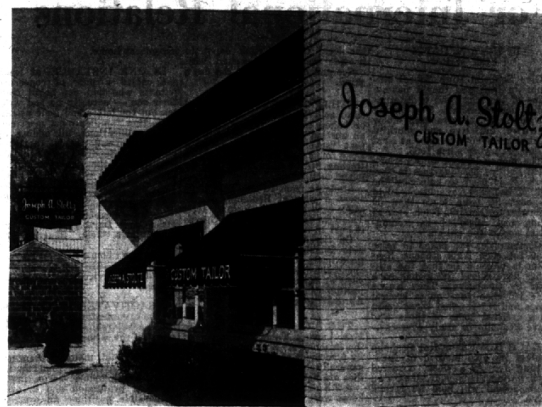
Unusual setting for a discussion of your Will or another trust matter? Sure it is. But we think something as personal as trust consultation requires informal, relaxed surroundings. And that's just what we've created in our Woodward-Hamilton office. There's lounge furniture. Carpets and soft lighting. And quiet privacy away from the distractions of "upstairs" offices. Like the

sound of it? You'll like the service, too. Our experienced trust team—J. Len Wilson (left, above), B. James Theodoroff (center) and John Park (right)—are eminently qualified to handle all aspects of trust and estate planning and management. For an appointment with any one of them, simply call MI 4-2600. Only Detroit Bank and Trust offers this service in Birmingham.

the Most Experienced Bank in town

**DETROIT BANK & TRUST**

WOODWARD-HAMILTON • WOODWARD-14 MILE • WABBEK BLDG. • WOODWARD-OAKLAND DRIVE-IN OFFICE



**New Stoltz Store**

Opening soon will be this new building which will house Joseph A. Stoltz, custom tailor, who formerly was located at 148



MRS. SIMPSON

**B'ham Woman To Be Huntley Co-ordinator**

An innovation in the building industry was announced this week by Woodbury Building Co., developers of the new 172-home subdivision to be known as "Huntley" in Beverly Hills.

Mrs. Phoebe L. Simpson, who has lived in the Birmingham area since 1929, has been appointed community co-ordinator for "Huntley."

According to Richard Bleznak, President of the building firm, Mrs. Simpson will introduce residents of the development to membership chairmen of various clubs and take the residents on tours of schools which their children will attend.

She began this work when there was only a handful of residents in the entire Birmingham area.

MI 4-1100 is a number for you to remember. Call it today and place your Birmingham Eccentric classified.

**Name Ewald To New Post In Washington**

William R. Ewald, Jr., formerly with the Detroit City Plan Commission and son of William R. Ewald, advertising executive of 2685 14 Mile, Franklin, has been elected senior vice president and treasurer of Doxiadis Associates, Inc., with headquarters in Washington, D. C., is the United States subsidiary of Doxiadis Associates, international firm of consultants in urban and area development, Athens, Greece.

Ewald will direct, in a technical and creative capacity, all activities of Doxiadis Associates, Inc., as well as be in charge of administration, coordination and financing.

He has been active in city development and planning since 1946, when he became associated with the firm of Saarinen, Swanson & Saarinen in Bloomfield Hills. Later he was with the Chicago office of Skidmore, Owings & Merrill; served with the Detroit City Plan Commission; and was assistant manager for new industry location with the Baltimore Association of Commerce.

In 1955 he was brought by Winthrop Rockefeller to Arkansas to serve as chief of development and to help establish the programs of the newly created Arkansas Industrial Development Commission, of which Rockefeller is chairman.

IN JANUARY, 1959, Ewald was named assistant commissioner for technical standards of the Urban Renewal Administration of the Federal Housing and Home Finance Agency.

In the course of this work, he acted as chairman of the board of review for urban renewal project applications; chairman of the Manual Task Force Review Board; chairman of the joint URA-FHA committee to revise and coordinate FIA policy with new URA conservation program; and

**MJ&A Makes Unit Changes**

Realignment of the agency's Cadillac account executive group has been reported by Charles F. Adams, executive vice president of MacManus, John & Adams, Inc., Bloomfield Hills, and group head.

Robert E. Field, 330 Martell, Bloomfield Hills, who has been Cadillac account executive, becomes account supervisor.

Wendell D. (Pat) Moore, 6910 S. Clunbury, W. Bloomfield, who has been director of advertising and sales promotion for the Dodge division of Chrysler Corp., joins MJ&A as Cadillac account executive.

William G. Bishop, 4879 Quarton, Bloomfield Township, has been chairman of the Staff Subcommittee on Conservation.

In 1960, at the request of Governor Luis Munoz-Martin, Ewald was given leave of absence to make an analysis of the economic, planning and development programs of Puerto Rico.

named assistant account executive and Donald F. Malton, of Royal Oak, has been transferred from the traffic department to the Cadillac account group.

FIELD, WHO joined MJA in January, 1957, represented Time Inc. for four years previously, and also was employed by Campbell-Ewald Co. He is a son of the late Rosewell (Po) Field, famed copywriter in the early days of national advertising.

More is a veteran of the advertising business, starting with Campbell-Ewald Co. in 1940. In 1952 he joined Grant Advertising Inc., as media director on the Dodge account and three years later became Dodge advertising manager.

He was made director of advertising and sales promotion in 1957. He is a past president of the Advertiser's Club and currently is lieutenant governor of the sixth district of the Advertising Federation of America.

**My Neighbors**



"There's a guy who knows how to relax."

**HANDSOME FASHIONS**

*Well tailored warmth in every correct overcoat fashion*



Over 200 Coats To Select From!

Look the field over carefully: classic box models with set-in sleeves or raglan shoulders; the semi-fitted model with crisp peak lapels. All are well cut, full bodied and beautifully balanced coats to give you your smartest money's worth.

\$79.50 to \$265

**Young's of Birmingham**

Open Friday Evenings Until 9 P.M.

Midwest 6-1212