

If there is a lack of gentility in today's world it probably is because of the popularity of so many people paying homage to the gods who preside over the fashions of materialistic, sensual existence. To be sure, one need not assume only the role of serene and doleful solemnity; leaving living with plenty of good humor is properly adding names of the "condiment of joy" to the "menu of life."

## Local Men Appointed to High Posts

The Michigan Bank has announced executive appointments of two Birmingham area men.

James P. Cumiskey, Jr., 471 Oakland, Birmingham, has been named vice president and commercial loan officer. Lyle K. Robinson, 1851 Saratoga, Lathrup, has been promoted to assistant vice president.

Cumiskey moved to The Michigan Bank from Browning Line, Inc., where he was vice president and chief financial officer.

He has had financial experience with other lending institutions and served as examiner and chief of the loan application division of Reconstruction Finance Corp.

Cumiskey is a member of the University Club and the Bloomfield Open Hunt.

ROBINSON HAS been with the bank since October, 1960, in charge of the automobile finance department.

Previously he had been branch supervisor for the C. I. T. Credit Corp. in the Lansing division office, in charge of sales and operations for the division area.

## Insurance Man Presides at Confab

Donald F. Lau, 6025 E. Surrey, Bloomfield Township, an associate of the Frank W. Howland Agency Insurance Co. in Detroit, presided at the opening session of the company's Midwest Regional Conference, May 15-17 in French Lick, Ind.

Lau is currently president of the company's agents association, which has over 2,000 members throughout the U. S. The French Lick conference will feature business meetings and seminars.

## BUSINESS NEWS B'ham-B'field Bank Opens New Facility

Charles D. White, 7355 Parkstone Lane, Bloomfield Township, president of the Birmingham-Bloomfield Bank, announced the opening of the bank's new drive-in, walk-up facility last week.

"Located directly across Bates Street from the post office, we believe that this new facility—Birmingham's first Drive-In, Walk-Up unit—will prove to be very convenient and time-saving for people shopping or doing business in downtown Birmingham," said White.

"It is within the block South of Maple, and is located on the square where not only the Post

Office, but also the Library, Community House, Municipal Building and Telephone Building are also situated.

"CARS CAN TURN into the drive-in window from Martin Street, just west of the bank, and drive out on Bates Street. Walk-up customers, of course, can bank right from the street without going a step out of their way," said White.

Savings and checking deposits, installment loan payments and check cashing can be done at both the drive in and the walk-up windows. They will be open during the regular banking hours of Monday through Thursdays, 9:30 a.m. to 4 p.m.; Fridays, 9:30 a.m. to 6 p.m.; and Saturdays, 9 a.m. to noon.

The unique service building was designed by Louis G. Redstone, architect, and was built by Chasius Construction Company of Birmingham.

## Frankman Moves To Hollywood

Donald A. Frankman, who has been three years with Campbell-Ewald Co. Detroit-based national advertising agency, has been transferred from Detroit to the agency's Hollywood, Calif. office. Frankman lived at 3645 Upton Circle, Birmingham.

Willard Klose, vice president and TV creative director of Campbell-Ewald, who made the announcement, said Frankman will primarily on commercial film production as associate TV production director.

He also will continue in the writing and creative capacity of integrating TV commercials into Chevrolet's 1962 film shows. Frankman came to Campbell-Ewald from the J. Walter Thompson agency's New York office, where he worked on TV production.

## Lumber Man Attends 'Window Workshop'

William A. Rosso, of Birmingham Lumber & Supply, Birmingham, recently attended a two day "Window Workshop" at the Anderson Corp., Bayport, Minn.

The Workshop included a trip through the plant, which is the largest in the world devoted solely to the manufacture of window units.

Coal laundering is big business. At one of the most modern coal processing plants, 400 tons per hour are screened, sized, washed and dried.

# The Birmingham Eccentric

BIRMINGHAM, MICHIGAN

Thursday, May 25, 1961

SECTION B

## Wells Chapin Appointment Announced

Appointment of Wells Chapin, 942 Arden, Birmingham, as manager of marketing for communications was announced Friday by Avco's electronics and ordnance division in Cincinnati, Ohio. Chapin previously was employed in various marketing and sales positions including Thompson-Ramo-Woolridge and the General Electric Co.

Before joining Avco, Chapin was manager of marketing for the dare division of Thompson-Ramo-Woolridge at Michigan City, Ind.

Prior to that, from 1952 to 1959, he was with the General Electric Co.'s electronics division in several capacities.

BEFORE HIS association with General Electric, Chapin was a consulting engineer. He also has been employed by Raytheon Manufacturing Co. as a specialist in radar.

Chapin supervised the construction of radio and television facilities for the board of education in St. Louis, Mo., and the radio and television facilities of the St. Louis Globe-Democrat. He has served as chief engineer and consultant to several other radio stations in the Midwest.

Chapin is a senior member of the Institute of Radio Engineers, a member of the Armed Forces Communications Association and the National Association of Educational Broadcasters. He also is an active single band ham radio operator, with the call letters K8ONL.

## Early Deadlines Set for Our June 1 Issue

Because of the Memorial Day holiday, all news and advertising copy for the June 1 issue of The Birmingham Eccentric must be in our offices by 4 p.m. Monday, May 29. Our offices, at 1225 E. Bowers, will be closed all day Tuesday, May 30.

## Yamasaki To Receive RPI Honor

Minoru Yamasaki, renowned Birmingham architect, will be awarded an honorary Doctor of Fine Arts degree at the June 9 commencement exercises at Hensseler Polytechnic Institute, Troy, N. Y.

Yamasaki, who has offices at 1025 E. Maple, has designed government and public buildings, commercial, college, school and church buildings.

Among his most nationally known works are his urban redevelopment studies in St. Louis and Detroit, his design for the St. Louis air terminal, the Federal Reserve Bank in Detroit, and Wayne State University's McGraw Memorial Conference Center.

HIS WORKS have been exhibited at the Brussels Worlds Fair, the American National Exhibition in Moscow and the International Building Exposition in Berlin.

He has received the American Institute of Architects Honor Award in 1956, 1959 and 1961.

## Real Estate Firm Appoints McKeough

Gordon F. McKeough, of Detroit, has been appointed a member of the staff at George Wellington Smith, real estate, 32455 Franklin Road, Franklin.

McKeough has been active in Birmingham-Bloomfield area real estate for many years, and will work out of the Franklin office of the Smith agency.

## SUPP-hose for MEN

FEEL RELAXED... REFRESHED... ON THE COURSE AND OFF IN SUPP-HOSE® SOCKS FOR MEN

These wonderful out-socks are being worn by golfers everywhere! Supp-hose socks look good... feel good... they're all-nylon, long-wearing, and they stay on! Most important—Supp-hose socks offer you the support that helps ease leg fatigue! Tomorrow too off in Supp-hose and enjoy every step if your game! Only \$4.95 a pair. Sanitized for hygienic freshness.

Women's New! Tapered Toe Tennis Oxfords

White; narrow and medium widths. Washable; brushed nylon; laces green and black. Sizes 4-10.

Value \$2.99 & \$3.99

Dickinson's  
272 West Maple  
MI 4-3680



Celebrating Our 3rd Anniversary

Hand Sewn Moccasin by Roblee

Burnt maple, cordovan leathers hand sewn moccasin construction with double leather soles. Two styles to choose from: 2-eye tie oxford and as illustrated, a side-buckled chukka.

Values to \$17 **\$12.88**



Celebrating Our 3rd Anniversary

Birmingham's Finest Selection of Men's and Boys' Footwear

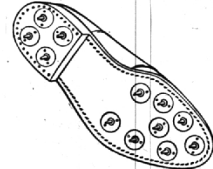
## SEBAGO-MOCS

Here's real "slip-on comfort" that only a moccasin can give you. Hand-sewn and hand-lasted in beautiful detail by skilled State-of-Maine craftsmen. Both with smooth hand-tooled collar for added smartness; Black only.

Values to \$13

Boys' Sizes 2 to 6 **\$5.88**

Men's Sizes 6 1/2 to 12 **\$9.88**



Golf Shoe Sale

Pedwin, Roblee

Black or brown with kitten tongues.

Values to \$18 **\$9.88**

Not in all sizes and widths. Please stop in soon.



3rd Anniversary SPECIALS

## Tennis Shoe Sale

Children's Sneakers

Red, white, blue. Completely washable; with cushioned arches.

Sizes 7 to 3 **\$2.99**

Men's and Boys' Low "Pro-lift" Tennis Oxfords

Washable white canvas, foam cushioned arches and heavy basketball soles. Sizes 2 1/2 to 6, 6 1/2 to 12.

Value \$5 **\$3.99**

Boys' and Men's High White Basketball Shoes

Washable white canvas, heavy soles, arch supports. Sizes 11 to 6, 6 1/2 to 12.

Value \$5 **\$3.99**

COOK-OUT CATALOG COUPON—worth \$2 (two dollars) in trade, Oct. 1 to 15, 1961—one to a customer—save whole ad

# Olsen's Market

SAVE THIS WHOLE AD AS YOUR COOK-OUT MEAT CATALOG

## Cook-Out-Time is Here

Stuffed No. 1 Spring Chicken

Roiled No. 1 Leg of Prime Lamb

No. 1 Old Fashioned Spare Ribs

No. 1 New York Strip Steaks

Roiled Sirloin No. 1 Beef

No. 1 Lamb Chops (Loin)

No. 1 Pork Chops Center Cut

GRILL OR FRY **B-E-E-F BANQUET 69¢ lb.**

Fresh, lean shoulder of top quality beef, ground medium course, no scraps or suet. Fry or broil in large patties; or make into meat loaf. Many customers prefer it over ground steak.

**FARM STYLE SAUSAGE**

In the early 1880's, Alex. Parks, a Birmingham butcher, achieved a modest kind of immortality by producing a pork sausage of rich, distinctive flavor. Through an unbroken line of Alex's successors, his famous sausage recipe became a part of this business when it was founded in 1924. It's grand enough to serve dinner guests; ideal with waffles and maple syrup, or poached eggs on toast—only 69¢ lb.

**SPICKLED PIGS HOCKS**

Marinated in very mild vinegar, fortified by imported spices of distinctive flavor. Only at Olsen's can you get spickled pigs hocks. Try them for snacks and luncheons.

**BIRMINGHAM SALAD**

Baked ham, ground fine, not coarse like the usual types. Mixed with pineapple, salad dressing and delicate spices. Ready to serve. 79¢ lb.

**DELUXE POTATO SALAD**

This is the flavorful, tangy kind of potato salad most people like but seldom get, when it isn't from Olsen's.

Here are the principal meat items for a gourmet's cook-out, taken from our stock and sculptured by Olsen's master butchers. There are several grades of such products sold in stores (three, for example, in chickens), but only one No. 1—in all of them, is worthy of our crest and craftsmanship.

Leg of lamb, boned, rolled and tied, ready for roasting. Chickens, stuffed, split or quartered, to order—the same goes for ducks and turkeys. The sirloin tip roast is all No. 1 prime beef, no bones, rolled and tied. No. 1 New York Strip Steaks, like watermelon hearts, are the finest section of prime-quality T-bone steaks, boneless, tender and juicy—not cheap, but oh, so good!

Spare-rib addicts gasp with delight, when they first see and taste our No. 1 Old Fashioned, or Country Style ribs; they are so meaty, tender and juicy they make ordinary ribs seem like bare bones. These are No. 1 lamb loin chops, the kind that melt in one's mouth. Other lamb chops at lower prices, also available. No. 1 center-cut pork chops, tender, flavorful, rich in vitamins... You name it, we have it, but always remember, in Grade No. 1, only!

**Fancy and Staple Groceries, Fruits & Vegetables**

**PURE PORK CHOPLETS 89¢ lb.**

**COOK-IN SPECIALS**

For rainy days, try one of these Olsen's ready-for-the-oven masterpieces of the butcher's skill. Note the reasonable prices, then call.

**FINE-CUT HAM LOAF 79¢ lb.**

A special blend of smoked ham, pork, eggs, milk and bread crumbs, all equally spiced. Bake and serve with hot mustard sauce (free). Delicious cold in sandwiches.

**LEG-O-PORK (Fresh Ham) 89¢ lb.**

Just like our fine-quality cured ham, without the smoke and brine; boned and stuffed with herb-seasoned dressing, rolled and tied. Any size. Ideal for your roaster, or oven.

**STUFFED LEG-O-VEAL**

Boned leg of prime veal, stuffed with our special dressing, rolled and covered with a thin shell of suet to preserve natural juices.

Where **CUSTOMER CONSIDERATION** comes first!

Each 12-15 ea.

An extra-thick lean rib chop, neatly sliced, stuffed with our special herb-seasoned dressing and garnished with toasted bread crumbs.

407 Brown at Chester **"We Deliver"** Established 1924

THIS WHOLE AD IS A COUPON WORTH MONEY TO YOU—SAVE IT

MI 4-1916