

State Representative Clarifies Legislature Session Reports

Here is a personalized column by your state representative, a Birmingham resident. His purpose is to clarify some of the conflicting reports about this session of the Michigan Legislature.

LANSING—If you've been following reports of the current session of your State Legislature, you're probably thoroughly confused at this point. I'd like to take this opportunity to help clear up a few points for you.

The appropriations bill, particularly in regard to higher education, seems to have been the hotpot of controversy. Actually, the facts are quite simple.

There are no "cuts" in the appropriation bills. In the 1961 general fund is a record \$462 million.

The Governor's recommendations were reduced in some areas and increased in others. But comparison should be made with last year's budget, not with the governor's current recommendations.

WE CANNOT REALISTICALLY count on more than \$462 million in revenue for the general fund. The governor's tax plan would not produce more revenue.

So we face the same problem of apportioning funds even if his income tax plan were adopted. His plan would not meet the budget he proposed.

If spending is to be increased, more money must be found for the general fund. This is true even if the governor's tax proposals were adopted in full, because total revenue under his plan would not be increased unless he wants to propose even higher income tax rates than he has originally requested.

It is improper to use the needs of education or any other service as a lever to promote a particular tax plan, which has seemed to be the administration's intent.

THE GOVERNOR'S last-minute attempt to extend the temporary nuisance taxes to implement his budget recommendations actually amounted to being "lastest with the least."

His program lacks fiscal responsibility because it provides no money to apply to the deficit. From the beginning of the session, the governor has stuck with his estimate of revenue, despite monthly reports showing a decline in in-

come from present tax sources.

At the start of the session, Republicans indicated willingness to retain some of the temporary taxes. The Governor and his party said "No."

Then a group of Senate Republicans attempted a bi-partisan movement to retain the telephone and telegraph tax and use the revenue for higher education, mental health and deficit retirement.

THIS ATTEMPT was blocked by the governor. He has said repeatedly that one of his campaign pledges was the expiration of the temporary taxes and we took him at his word. In my opinion, a vacillating policy is no substitute for positive leadership.

I sincerely believe that the state can live within our \$462 million budget and that all agencies can provide adequate services, provided no attempts are made at political reprimand.

It is important to keep a careful eye on spending by all agencies and institutions. If any college or university should curtail enrollment of qualified students, surely this action would be justified. The same should apply to all state agencies.

I would recommend that the entire field of state finance be kept under close surveillance in the next few months. It is not going to be

an easy matter to restore our state's fiscal responsibility.

THERE WILL BE protests and rationalizations from vested interests. We in the legislature must certainly will be denounced. But we were given the mandate of fiscal responsibility in the 1960 election, and we intend to keep faith with that mandate.

I'll be happy to hear your views on our state problems. Just write me in care of the House of Representatives, Lansing, Mich.

B'ham Man's Herd Rates Top Award

Windrow Farms in Metamora, owned by Edward E. Wilson, 5380 Beach, Birmingham, was recently cited for having the nation's highest producing Ayrshire herd in the 25 to 60 cow division for 1960. The announcement was made at the Ayrshire Breeders' Association's 86th annual meeting banquet in Harrisburg, Pa.

In recognition of the accomplishment, Wilson received one of the silver French trophies annually awarded by the association.

With 36 registered Ayrshires tested under the official herd test program, the herd completed its

Romney's Chief Civic Interest Is in CFM

George Romney's main civic interest still lies in Citizens for Michigan, not in candidacy for any political office.

Romney made this clear following a talk last week with former Vice President Richard M. Nixon. Romney is president of American Motors Corp. and state chairman of CFM. He resides at 1830 E. Valley Road, Bloomfield Hills. Romney denied after his talk with Nixon that he would seek the governorship in 1962.

"I DID talk to Mr. Nixon at his request," Romney stated "just as I have talked with other leaders in both parties about state and national problems, and efficiency in meeting them."

"My primary public service interest continues to be Citizens for Michigan, and I have made no commitments of any character to anyone in either political party."

Nixon had urged Republicans in Michigan to find a man like Romney as a candidate for governor.

He said Romney has wide appeal, is a successful businessman, active in community affairs and respected.

NIXON commented about Romney at a series of conferences of Republican figures in Detroit last week.

Romney and his CFM have been strong advocates of a Constitutional Convention and Romney is seeking nomination as a delegate at large for Con-Con.



THE BLACK LANCER

The one straw hat that is entirely appropriate for any occasion. This smart, pick-front Milan will fast become your favorite straw hat. It features a luxurious black shantung band with a bronze knight and horse ornament. The narrow brim is bound in matching fabric.

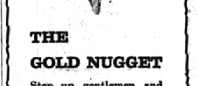
\$8.95



THE GOLD NUGGET

Step up gentlemen and draw one of the most exciting straws of the year—the Stetson Gold Nugget. This low telescope is crafted in the finest silk Ramie straw that lets air in and keeps heat out. The smart, subdued colors are brightened by a narrow, gold striped band and a small gold nugget pin.

\$8.95



THE STETSONIAN

Patterned after the highly successful Stetsonian felt hat, this superbly styled Panama has the same air of casual correctness. A wide variety of fashion-right hues are set off by the striped grosgrain band and matching bound edge brim. On the bow—a tiny silvered replica of the Stetsonian crest.

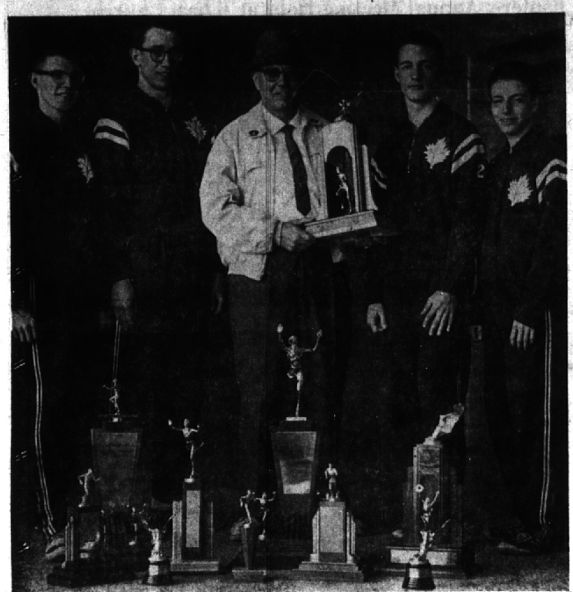
\$10.95



Other Straw Hats **\$5.95**

Dickinson's

272 West Maple Midwest 4-366



Memorials of Victory

Seaholm's distance medley relay squad pose with their coach Kermit Ambrose after recently setting a school record in their event. Left to right: Bill Heydon, Tom Sweeney, Ambrose, Bruce Bates and Jack McPhee. The boys run a 27:56.4 at the

Mansfield Relays for the record. The large trophy which the coach is holding is the one from Mansfield. The others are for feats the boys have accomplished and those of teammates during the past two years.

Consumers Rates Rise Two Cents Per Day

Residential gas customers of Consumers Power Company will pay an average of about two cents more a day for their gas service under new rates in effect since May 11.

Customers who heat their homes with gas will pay an average increase of four and one-half cents a day, according to Division Manager David H. Gerhard.

Rates for commercial space heating and for commercial and industrial service also are somewhat higher, Mr. Gerhard said, the amount of the increase varying with the amount of gas used.

"THIS IS THE FIRST change in Consumers gas rates since 1954, when they were reduced," Gerhard said. "Since then there have been sharp increases in the cost of everything that goes into gas service, including wages, materials and especially the cost of gas purchased by the company for delivery to its customers."

More than 90 per cent of the gas distributed by Consumers is brought into Michigan from distant locations such as Texas, Louisiana and Oklahoma. With the revised rates in effect, Consumers gas rates still will compare favorably with those of competing fuels.

THE NEW RATES are designed to produce additional annual revenue of \$7,925,000 a year as authorized May 5 by the Commission.

Supplying gas service in 30 Michigan counties, Consumers Power Company has 545,000 gas customers. Of these, 350,000 use gas to heat their homes or other buildings, and 170,000 are residential customers who use gas for such purposes as cooking and water heating. The remainder use gas for commercial operations or industrial processing.

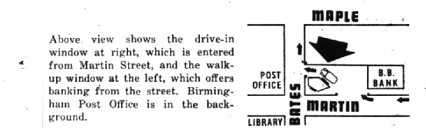
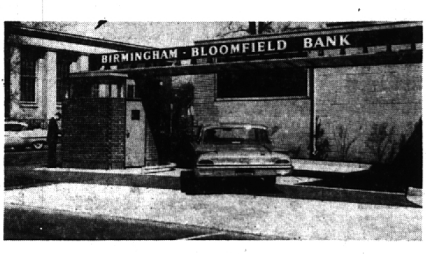
The new rate applying to all residential usage, including space heating, is as follows: \$1.80 per

cubic feet for the next 10,000 cubic feet. 8 cents per hundred cubic feet for all over 12,000 cubic feet. The old rate was \$1.20 per month, covering the first 500 cubic feet, 15 cents per hundred cubic feet for the next 1,500 cubic feet, 10 cents per hundred cubic feet for the next 10,000 cubic feet, 8.3 cents per hundred cubic feet for all over 12,000 cubic feet.

THE OLD RATE was \$1.20 per month minimum charge, covering the first 500 cubic feet, 15 cents per hundred cubic feet for the next 1,500 cubic feet, 10 cents per hundred cubic feet for the next 8,000 cubic feet, 7.5 cents per hundred cubic feet for all over 10,000 cubic feet.

The new rate for general commercial and industrial service, apart from exceptionally heavy usage, is as follows: \$2 per month minimum charge covering the first 300 cubic feet, 15.7 cents per hundred cubic feet for the next 1,700 cubic feet, 11 cents per hundred cubic feet for all over 10,000 cubic feet.

Above view shows the drive-in window at right, which is entered from Martin Street, and the walk-up window at the left, which offers banking from the street. Birmingham Post Office is in the background.



3% Paid on ALL SAVINGS ACCOUNTS

CHECKING ACCOUNTS Regular and Special 10c Accounts

LOANS of all types

SAFE DEPOSIT BOXES

DIRECTORS

- Martin L. Butzel
- F. Douglas Campbell
- Edwin O. George
- C. Allen Harlan
- Merritt D. Hill
- Stephen C. Miller
- Donald H. Parsons
- W. Calvin Patterson
- Kenneth C. Tiffany
- Robert Vanderkloot
- Charles D. White
- G. Bretnell Williams

the village bank

BIRMINGHAM-BLOOMFIELD BANK

250 MARTIN ST. (1/2 Block East of Post Office) BIRMINGHAM • Midwest 7-2500

OPEN: MONDAYS THRU THURSDAYS—9:30 A.M. TO 4 P.M. FRIDAYS—9:30 A.M. TO 6 P.M. SATURDAYS—9 A.M. TO NOON

MEMBER FEDERAL DEPOSIT INSURANCE CORPORATION

POTTER Moving & Storage Co.



no. 1 specialist in packing!

All the freedom of a pedal pusher...all the trim tailored good looks of a smart skirt. Smart women everywhere like the fun, the ease, the versatility of this popular new fashion. In Shirley's Serrano, Beige, wedge-wood blue, lilac, navy, black. Sizes 8 to 18

POTTER Moving & Storage Co. 2253 COLE MI 4-4612

No. 1 on U.S. Highways No. 1 in Service No. 1 in Your Community

\$8.98

MULHOLLAND'S 283 N. Woodward BIRMINGHAM