

IT'S THE HIGHER PERCENTAGE THAT COUNTS!

4%
Current Rate

AT CAPITOL, YOUR SAVINGS EARN

Established in 1890—Never missed paying a dividend. 71 years of sound management—your assurance of security. Assets now over sixty-three million dollars.

DIVIDENDS ARE COMPOUNDED AND PAID SEMI-ANNUALLY ON ALL SAVINGS

SAVINGS IN BY THE 10th OF THE MONTH EARN FROM THE FIRST!

CAPITOL SAVINGS & LOAN ASSOCIATION

27215 SOUTHFIELD AT 11-MILE RD. MI 4-7778

Downtown Detroit Office
Washington Blvd. Bldg.
Corner State St.
WO 2-1078

Pontiac Office
75 W. Huron St.
1 Bk. West of Courthouse
PE 4-0561

Home Office: Lansing
Member Federal Home Loan Bank System

You will find many bargains in The Eccentric Classified Columns.



Mallory COCONUT

Here's your key to summer comfort... a youthful Mallory Coconut straw in the new darker shades... perfectly accented with a bright pleated band. This cool Mallory Coconut is a perfect companion for your summer wardrobe.

\$5.95

PECK'S

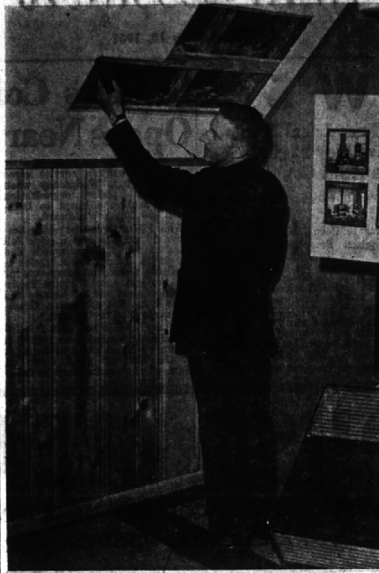
Tailors & Men's Wear

108 S. Woodward, Nr. Maple

Open Friday Evenings

MI 4-7724

BUSINESS NEWS



'Doctor's' Office

"House Doctor" Clint Siewek puts the finishing touches on his office at Erb-Restrick Larr's Birmingham store. The room is used for demonstration showing building materials in different stages of construction. The Birmingham store is at 245 S. Eton.

B'ham Residents Use 38 Million Pounds of Food

The individual Birmingham resident spent more money for food in the past fiscal year than did people in most parts of the United States.

On a weekly basis, food expenditures locally were at the rate of \$13.72 per person per week. This was solely for food purchased for home consumption. It does not take into account the amount spent in restaurants.

By way of comparison, the outlay in other parts of the United States was \$8.22 per person weekly. In the East North Central States, it came to \$5.65.

FIGURES ON food consumption and on the amount of money that went for that purpose during the year are contained in data released by the Department of Commerce, the Department of Agriculture and other sources.

They show that the average American has a sturdy appetite. In the past year he consumed no less than 1,488 pounds of food, nearly 29 pounds a week.

What makes up his weekly diet? The principal items are meat, 2.6 pounds, milk products, 2 pounds, eggs, a half dozen, vegetables and fruits, excluding potatoes, 7.9 pounds, cereals and baked goods, 2.8 pounds, and fats and oils, including butter and margarine, nearly a pound.

IN BIRMINGHAM, the total amount of food consumed in 1960 is estimated at 28,237,000 pounds.

Among non-farm residents, the reports show, the use of meats and vegetables is somewhat higher than it is among farm dwellers. As to other kinds of food, however, farm residents consume more of the eating habits of farm and non-farm people are fast disappearing. A large proportion of the food consumed by farmers is now being purchased by them. At one time, by contrast, they lived almost exclusively on home-grown products.

A BREAKDOWN by the Department of Agriculture shows how the typical non-farm family of average income distributes its food dollar.

In Birmingham, assuming normal buying conditions, 23 per cent of the food dollar goes for meat, poultry and fish, 23 per cent for fruits and vegetables, 19 per cent for dairy products and 16 per cent for cereals and baked goods. The remaining 16 per cent is divided among the host of other food items.

Fielding Associates With Federal-Mogul

Diane Fielding Murphy, 31, of 29722 Pleasant Trail, Southfield, has joined Federal-Mogul Bower Bearings, Inc., as administrative assistant to director of marketing research and planning.

Murphy, who was manager of the Dura Corp., marketing research department, is a member of the Michigan Product Planning Association, the American Marketing Association and a former member of the Marketing Council of the Machinery and Allied Products Institute.

Chapoton Joins Local Realtors

Elliot S. Kinney, President of Snyder, Kinney & Bennett, Inc., Birmingham, has announced that Willard F. Chapoton, 31220 Lucerne, Franklin, has joined the firm as an associate broker.

Chapoton was in the advertising department of Michigan Bell Telephone Co. for four years and has had some eight years experience in real estate in the Birmingham-Bloomfield area. He also is active in Cub Scout work in Franklin.

General news deadline is 4:30 p.m. each Tuesday.

AUCTION SALE

Unclaimed Household Goods

To Be Sold At

1015 South Main, Royal Oak

Saturday, May 20th at 9:30 AM

Potter Moving & Storage Co.

(In case of Rain, Sale will be Mon., May 22, at 1:30 p.m.)

STARTS TOMORROW! Kresge's 3 STAR SALE

BRIDGE MIX SALE!



Chocolate covered creams, fruits

ALUMINUM CHAIR \$4.47



Sturdy Firestone green and white webbing

DISCOUNT PRICED! SPECIAL GRILLS



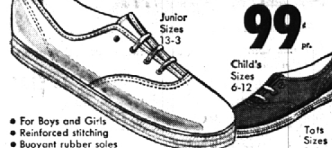
UL MOTOR \$9.97 WITH SWITCH

• Moves easily on sturdy wheels!
• Motorized split barbeques to perfection!
• Hood shelters huge 24" chrome grid!



Crank adjusts chrome grid

CANVAS SHOES 99¢



• For Boys and Girls
• Reinforced stitching
• Buoyant rubber soles
• Blue • Red • White

MOTORIZED WAGON \$12.97



UL Motor

• Hood protects fire from wind!
• Motorized split turns evenly!
• Use workshelf for slicing, bottom shelf for condiments.



Copper-tone Finish

MICHIGAN MARCHING FORWARD



REG. \$1 SLEEVELESS BLOUSES 57¢



• Schiffli embroidered
• Fresh-look cotton
• White, white with black, blue, pink
• Sizes 32-38

Men's Short Sleeve SHIRTS \$1.17



• Solid color knits
• Reg. \$1.17 S.M.L.

Girls' and Women's ANKLETS 4 for 84¢



• Elastic turnover cuff
• Nylon reinforced heel and toe
• Sizes 6 1/2-11

CUSTOM PICTURE FRAMING

Your favorite canvas, water color or prints EXPERTLY FRAMED

Select your frame from many beautiful styles and finishes

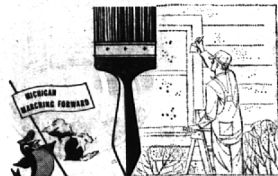
KRESGE'S—BIRMINGHAM

KRESGE'S—NORTHLAND CENTER

West Maple at Henrietta—Birmingham

"CHARGE IT at KRESGE'S"

do you need...



... new paint?



... new room?



... new front?



... new garage?

... don't put it off, put it ON! Home owners—business men. May is the month to modernize your home, store or plant. Arrange for a Home or Business Modernization loan at any office of Manufacturers Bank or through your contractor.

MANUFACTURERS NATIONAL BANK

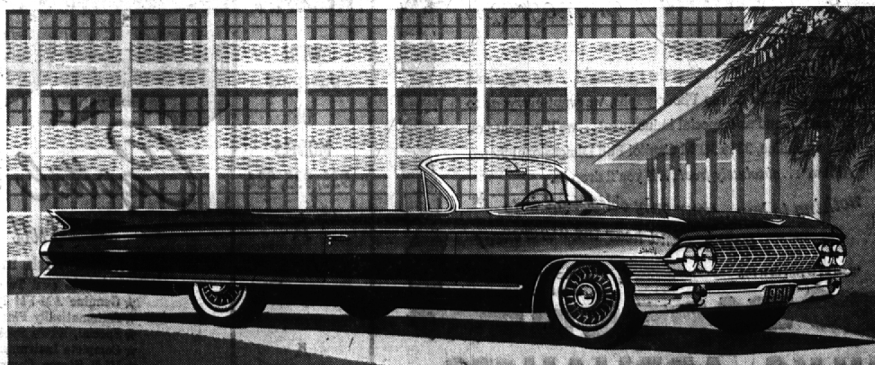
Woodward N. at Wellesley, Pleasant Ridge
Ten Mile Road W. near Telegraph, Southfield
1012 N. Hunter Blvd., Bloomfield Twp.
4057 West Maple Road near Telegraph, Bloomfield



Investment

Cadillac's reputation as a sound investment is the envy of all motorists. Aside from the pleasure a Cadillac gives, it provides many economic rewards. For example, you can own a Cadillac at a price below many models of less eminent cars.

Cadillac craftsmanship and dependability hold maintenance expense to a surprising minimum. And its demand in the resale market is known and respected everywhere. Your dealer will be glad to explain the wisdom of Cadillac ownership.



VISIT YOUR LOCAL AUTHORIZED *Cadillac* DEALER

WILSON PONTIAC-CADILLAC, INC.

1350 N. WOODWARD AVENUE, BIRMINGHAM