

Lamb Announces 1960 Record Gain

Michigan Life Insurance Co. has reported a record gain of \$80,788, 000 in life insurance during 1960, boosting life insurance in force to \$495,204,700 at the end of the year. Scott E. Lamb, 6301 Sheringham, Bloomfield Township, reported Michigan Life's 1960 assets rose from \$19,248,000 to \$21,094,000. Capital and surplus increased from \$2,006,000 to \$3,432,500. Policyholders were paid benefits of \$9,251,000, bringing total benefits paid since 1927 to \$11,257,000.

Heads Mail Event

Ed Barnowski, 1712 Henrietta, Birmingham, of McGraw-Hill Publishing Co., accepted Detroit Mayor Louis C. Miriani's proclamation of "Direct Mail Day" (March 24) in the Motor City. Barnowski is general chairman of the annual event.

B'ham-B'field Bank Adding Drive-In

Construction work has started on a new type of drive-in and walk-up banking facilities to be erected by Birmingham-Bloomfield Bank on the northeast corner of Martin and Bates, Birmingham, directly across the street from the post office, announced Charles D. White, president of the bank. Cars will approach the drive-in structure from Martin Street, and will leave it on Bates Street. It was designed by Louis G. Redstone.

Receives Contract

The Michigan State Highway Department has awarded a contract for the building of twin bridges to carry Interstate 75 over the Grand Trunk Western railroad tracks 1.5 miles north of Pontiac to A. J. Williams Construction Co., Southfield. Work is expected to be completed by October.

B&L Announces Top Appointment

Bliss & Laughlin, Inc., Harvey, Ill., announced the appointment of Eugene G. Sheasby, as vice president, Detroit-automotive division. Sheasby plans to move to 1465 Kirkway, Bloomfield Hills in April. He will be in charge of Bliss & Laughlin's Detroit plant, which has an annual rated capacity of 55,000 net tons. B&L is one of the nation's leading independent producers of cold finished steel bars.

SHEASBY, SHEASBY, 44, joined Bliss & Laughlin as general manager of sales in 1957. He previously worked at U. S. Steel Supply Co. as general staff manager, and at Fort Duquesne Steel Co. as a director and vice president.



ECCENTRIC PHOTO

New Service Added

There's a new self-service counter for one checkout required and all goods are packaged. Mrs. John Warner, 1061 Lakeside, Birmingham. Among the benefits, according to the bakery manager, are fresh baked pies, which are cooked on the spot. There is only one of the first customers at the innovation.

REMODELING...?

MAKE IT AN ALL-GAS HOME!



GAS

THE MODERN FUEL FOR AUTOMATIC COOKING CLOTHES-DRYING REFRIGERATION WATER-HEATING AIR-CONDITIONING AND INCINERATION

Today, many homeowners have as their remodeling goal an All-Gas home.

They know the importance of fast, efficient gas appliances. Modern gas appliances give silent, economical, time-saving service.

Only Gas does so much, so well, yet costs so little. If you're planning to remodel set your sights on an All-Gas home!

Only GAS DOES SO MUCH, SO WELL

PGS 180-20

CONSUMERS POWER COMPANY

B'field HS Girls Model for Rambler

Four Bloomfield Hills High School students were used as models by American Motors Corp. for its publicity photographs of the 1961 Rambler American convertible.

The girls are Sue Hallas, Kathy Harger and Sue Chatterton, of Orchard Lake, and Sue Wottila of Sylvan Lake Village.

Kuhlman Announces New Transformers

Kuhlman Electric Co., Birmingham, has announced three new lightweight transformers in 500, 333 and 250 KVA ratings.

The Kuhlman 500 is 50 inches high and holds its weight of 3100 pounds. The 333 is 46 1/2 inches high and reduction in losses is 29 per cent.

The 250 has an overall height of 32 inches and the weight has been cut in half from previous transformers in this rating. Losses in the 250 are 29 per cent below other designs.

Attend Conference

Timothy A. Reiman, 2911 Manchester, Birmingham, and William H. Mansfield, 628 Yarboro, Bloomfield Hills, took part in a leadership conference held by The Equitable Life Assurance Society at Bal Harbour, Fla., March 19-22. Both men are members of Equitable's Robert Ryan Agency in Detroit.

Honors Employee

Jack I. Frasier, 1941 Birmingham Boulevard, Birmingham, manager of The Maccahee's underwriting department, was among the group of people who recently paid tribute to Besse Annetta May, of Royal Oak, who has worked 50 years for the life insurance society.

EXPERT SERVICE
PORTABLE TV
FAST DEPENDABLE
Birmingham Electronics
141 E. Maple MI 6-8440

Medical Mirror
WHAT DOCTORS SAY ABOUT:
Water Pollution
• Big Babies
• T.B. Test
• Chewing Gum
Q. There is a lot of talk in our area about water pollution. Just how bad is this situation generally?
A. Just about as bad as it can get. A few years ago public health authorities estimated that every gallon of Ohio river water flowing past Cincinnati during certain seasons contained the equivalent of one quart of raw sewage. It's pretty much the same in all areas of dense population.
Q. One of my friends recently had a 10-pound baby. Was this due to the mother gaining too much weight during pregnancy?
A. There is fairly good evidence that weight gain by the mother during pregnancy has little influence on the size and weight of the baby. Women who have exceptionally large babies should have yearly checkups for diabetes. A considerable number of such women develop the disease in later life.
Q. What does a positive tuberculin test mean?
A. It means that the person either has or has at some time had tuberculosis and needs further examinations, including chest x-ray, to determine whether he currently has the disease.
Q. How can chewing gum be removed from hair?
A. You might try using any brand, pure cooking oil. Also, if gum is chilled with an ice cube, it becomes brittle and can be removed.
P.S. to Mrs. J.: Nurse your baby, if possible. There is nothing better than the producer-to-customer method.
Measured by fast relief from pain or swift recovery from illness — prescribed medicine is priceless. Measured by our reasonable prices, prescribed medicine is the biggest "bar-gain" money can buy.

MILLS PHARMACY
1740 West Maple Ave. Phone: Midwest 4-5060
FOR BEST RESULTS USE ECCENTRIC CLASSIFIED ADS



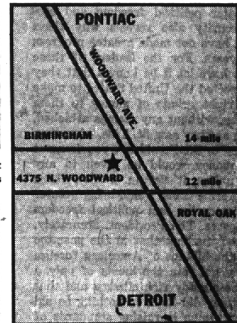
Centrally located to serve you better



There is a beautiful chapel available to meet every requirement for both size and religious appointment.



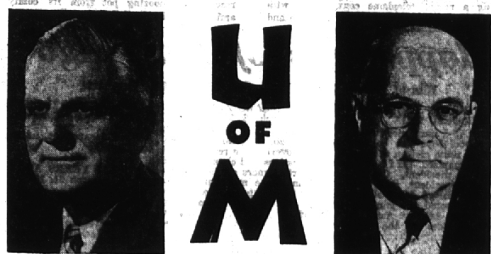
Our private family rooms offer seclusion in quiet, peaceful surroundings.



Here, dignified and considerate personal service is a tradition. It will cost a family no more for this fine service. For consultation call Liberty 9-0500.

Wm. Vasu Funeral Home
4375 N. Woodward Ave., between 13 & 14 Mile Roads

VOTE FOR GOEBEL & ZEDER REGENTS



PAUL G. GOEBEL (Republican)
Paul Goebel, Republican candidate for Regent of University of Michigan, is a former Grand Rapids mayor, a member of the Executive Committee of the University of Michigan National Alumni Board. A former U. of M. football player, he has been a football official in the Big Ten 15 years. He is a member of the University of Michigan Intercollegiate Athletic Board of Control.

JAMES C. ZEDER (Republican)
James C. Zeder, Republican candidate for Regent of University of Michigan, is a former vice president in charge of engineering at Chrysler Corp. He is chairman of the Board of Governors of Phoenix Research Project at U. of M., vice president of Michigan State-Oakland and a trustee of University of Detroit.

VOTE MONDAY, APRIL 3rd
GOEBEL - ZEDER FOR REGENT COMMITTEE

Assurance

Every mile you drive a Cadillac brings reassurance that you have made motordom's wisest choice. The approving looks of others are constant endorsement of Cadillac's soundness of styling. The ease with which a car of such stature handles is a recurring reminder of Cadillac's brilliant engineering. And you feel secure in the knowledge that your investment is protected by Cadillac's economy of operation and its enduring worth. Your dealer cordially invites you to experience the serenity of driving a Cadillac.

VISIT YOUR LOCAL AUTHORIZED Cadillac DEALER
WILSON PONTIAC-CADILLAC, INC.
1350 N. WOODWARD AVENUE, BIRMINGHAM