

BOB FROST SEZ:

"Save tire wear by crossing tires on your car every 5,000 miles. If you have a new car cross just the tires on the front—leave the spare tire in non-rotated condition—leave the value of your car when you trade it in. Whenever you have an automotive question call on me, Bob Frost. I'll be glad to assist wherever I can.

"If you're interested in a new Continental let me give you our prices. I'm sure you will be happy with my deal!"



PARK MOTOR SALES

COMET • MERCURY • CONTINENTAL
18106 WOODWARD
Just North of 6 Mile Road
TO 9-5000

CRAB GRASS KILLING

THE SAFEST, surest, and best way to eradicate crab grass is to kill it on sight. Eliminates guesswork and insures complete extermination.

CHICKWEEDS, broadleaf and other obnoxious weeds may be extirpated along with the crab grass.

THE FERTILIZE AGI-SPRAY METHOD is renowned for accuracy and efficiency in all forms of lawn spray killing. Lawn grasses improve with weed and crabgrass killing. Only the crab grass turns brown.



OUR METHOD of combining fertilizers, weed and crab grass killers and/or insecticides avoids duplication, and has saved South Oakland Co. residents many dollars in the past.

YOU TOO will profit greatly by calling us for free estimate and consultation regarding your lawn problem. Call day or evening.

FERTILIZE - BLOOMFIELD LAWN CULTURE

Lincoln 8-0171

PRIMARY ELECTION

To the Qualified Electors:
NOTICE IS HEREBY GIVEN, That a Primary Election will be held in the

City of Birmingham, County of Oakland
State of Michigan

ON

TUESDAY, JULY 25, 1961

At the place or places of holding the election in said city as indicated below, viz:

- PRECINCT NO. 1—Chesterfield Fire Station, 1600 West Maple.
- PRECINCT NO. 2—Holy Name School, Corner of Harmon and Greenwood.
- PRECINCT NO. 3—Congregational Church, Woodward at Euclid.
- PRECINCT NO. 4—Municipal Building, 151 Martin Street.
- PRECINCT NO. 5—Barnum School, Frank Street at Purdy Street.
- PRECINCT NO. 6—Adams Fire Station, 572 S. Adams.
- PRECINCT NO. 7—Grand Trunk Station, 245 Eton Road.
- PRECINCT NO. 8—Seaholm High School, Corner West Lincoln and Cranbrook. Lobby Entrance from Parking Lot.
- PRECINCT NO. 9—Pierce School, 1829 Pierce Street.
- PRECINCT NO. 10—Y.M.C.A., 400 East Lincoln.
- PRECINCT NO. 11—Torry School, 1658 E. Lincoln, Corner of Torry.
- PRECINCT NO. 12—Adams School, Oakland between Worth and Adams.
- PRECINCT NO. 13—Quarton School, Chesterfield and Oak.

For the purpose of placing in nomination by all political parties participating therein, candidates for the following offices, viz:

CONSTITUTIONAL CONVENTION DELEGATES
One from State Senatorial District
One from State Representative District

Also any additional amendments or propositions that may be submitted

NOTICE RELATIVE TO OPENING AND CLOSING OF THE POLLS
Election Law, Act 116, P. A. 1954

Section 720. On the day of any election, the polls shall be opened at 7 o'clock in the forenoon, and shall be continuously open until 8 o'clock in the afternoon and no longer. Every qualified elector present and in line at the polls at the hour prescribed for the closing thereof shall be allowed to vote.

THE POLLS of said election will be open at 7 o'clock a.m. and will remain open until 8 o'clock p.m. of said day of election.

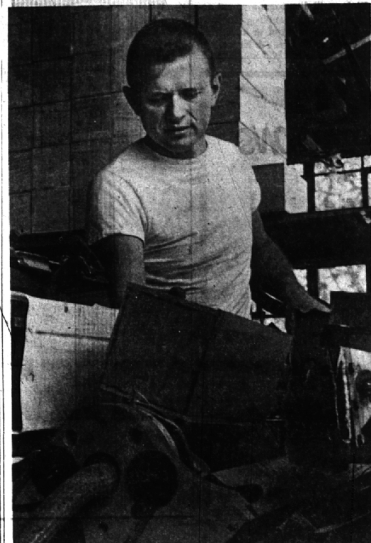
July 13, 1961
IRENE E. HANLEY, City Clerk
19-20

BUSINESS NEWS

BUSINESS OF THE WEEK

Woodcraft Co. Turns Out 'Most Anything from Wood'

by JESS MAXWELL
Staff Writer



Ron Smith, owner of the Woodcraft Co., 1184 Grant, Birmingham, is shown at work over the automatic high-frequency gluing machine. The machine can glue 20 joints in 30 seconds. Woodcraft manufactures all kinds of wood products—from engineering mockups to toy blocks, like the one being glued here.

Ever see a wooden beer mug? Neither have we, but the Woodcraft Co., 1184 Grant, made one recently.

Don't get alarmed, however. Wooden beer mugs are not the coming trend.

WOODCRAFT'S MUG was only a mock-up, to be delivered to a manufacturer for designing purposes.

Ron Smith, owner of Woodcraft, supervises a four-man crew, which turns out everything from wooden duplicating machines to sculptor's bases.

"Most of our orders are for 'normal' items," said Smith. "We usually manufacture tables, kitchen cabinets, chairs, custom hi-fi cabinets and items for schools—and only produce unusual items on special request."

WOODCRAFT HELPS TO supply R. H. Stone Products, Detroit, with a line of school items, including building blocks, toys, and furniture.

"In fact, we make 20 different items for schools," said Smith. An automatic high-frequency gluing machine, built by Woodcraft, is used for gluing joints under high pressure.

"It can glue 12 joints in 30 seconds," Smith said.

Smith is constructing a personal 24-ft. plywood boat in one corner of the shop.

"That boat is not helping the space problem too much," Smith said.

TO RELIEVE such space difficulty, Woodcraft is constructing a new building for its shipping and office divisions at 1182 Grant. Woodcraft was founded in 1923 by Roy Smith, who has retired.

Ron Smith joined the firm in 1955.

Bennett Appointed To New Ford Post

The appointment of Jerome Bennett, 1099 N. Glenhurst, Birmingham, finance manager, Ford International Staff, has been announced. Bennett, whose appointment is effective immediately, was formerly assistant to the vice president, Ford International staff.

He joined Ford Motor Co. in 1950, on the finance staff. After six years with Ford, Bennett was named market analysis manager, marketing staff, in 1957.

Before joining Ford, Bennett was an instructor at Wharton School of Finance, University of Pennsylvania, and later became manager, planning and analysis department, office of the vice president and general manager, Lincoln-Mercury division.

In 1958, he joined Ford International division as staff finance executive, finance officer, and served in that capacity until his appointment as assistant to the vice president, Ford International staff.

Bennett joins Burroughs after six years with IBM Corp., Englewood, N. Y., where his last position was manager of process engineering and research. Previous to his appointment, Bennett was in the oil industry.

The appointment of Keith Bennett of Birmingham as chief industrial engineer, Burroughs Corp., has been announced.

Bennett joins Burroughs after six years with IBM Corp., Englewood, N. Y., where his last position was manager of process engineering and research. Previous to his appointment, Bennett was in the oil industry.

Banish That "White Washed" Look On Your Wood Trimmed Brick House

ROGERS NEW Outside Trim WHITE

IT'S HERE NOW!

Ordinary paint on the wood trim of your brick house runs... looks streaky—and gives your house a "white washed" appearance. ROGERS new Outside Trim White prevents this because it is especially made for this purpose. Get it today.

Mon. thru Fri., 8 a.m. - 8 p.m.; Sat., 6 a.m. - 6 p.m.; Sun, 10 a.m. - 2 p.m.

J. FAWCETT & CO. HARDWARE

IRHA
Birmingham, MI 4-6020
Open SUNDAY 10 to 2 • 908 S. ADAMS Corner of WEBSTER

My Neighbors



"That's the president of our local—going to all this trouble to boost our morale, no doubt."

Michigan ranks second in production of industrial trucks and tractors, blowers and fans; trimmings and art goods; paper coating and glazing; malleable iron foundries; metal doors; sash and trim; refrigeration machinery.

Gets Burroughs' Job

The appointment of Keith Bennett of Birmingham as chief industrial engineer, Burroughs Corp., has been announced.

Bennett joins Burroughs after six years with IBM Corp., Englewood, N. Y., where his last position was manager of process engineering and research. Previous to his appointment, Bennett was in the oil industry.

His Holy Secrets

Medical Mirror
WHAT DOCTORS SAY ABOUT

Q. Will you please discuss the relative anti-pyretic merits of fluorides in pill form, tooth paste, and drinking water? A. The cheap and perhaps most effective means of employing fluorides in the prevention of tooth cavities is through fluoridation of the water supply. Fluorides in suitable amount in drinking water reduce by 50 to 70 per cent the incidence of cavities in teeth during the period in time such water is consumed. Well over 36 million persons in the U. S. now drink fluoridated water at a cost of less than 14 cents per year per family of four.

Q. Are doctors under oath not to reveal any of the patient's medical history to others? A. In taking the Hippocratic oath, traditionally administered to students receiving the M.D. degree, the physician promises to "keep his patient's secrets." The relationship of physician and patient is very much like that of confessor and priest. The communications are "privileged" and are not to be repeated. Under certain circumstances a physician may be required to reveal information about a patient by court order. He may also discuss cases with colleagues, but the identity of the patient is kept confidential unless the situation is of common knowledge or the giving out of such information is in the best interest of the patient.

It's wise to have a family physician. Then, if an emergency arises, you will not be a stranger to him. And remember, our friendly and competent staff will be glad to serve your prescription needs.

Note to readers: As many questions as possible will be answered in this column, but for obvious reasons replies must be brief.

Send questions to: P.O. Box 398, Madison Sp. Bldg., New York 10, N. Y.

ALWAYS A PLACE TO PARK

1740 West Maple Ave. Phone: Midwest 4-3060

PRIMARY ELECTION

TO THE QUALIFIED ELECTORS:

NOTICE IS HEREBY GIVEN, That a Primary Election will be held in the TOWNSHIP OF BLOOMFIELD, COUNTY OF OAKLAND, STATE OF MICHIGAN ON TUESDAY, JULY 25, 1961.

AT THE PLACE OR PLACES OF HOLDING THE ELECTION IN SAID TOWNSHIP AS INDICATED BELOW, VIZ:

- PRECINCT NO. 1—Bloomfield Township Hall, 4200 Telegraph Rd.
- PRECINCT NO. 2—Bloomfield Village School, on Lahser Rd., N. of Maple Rd.
- PRECINCT NO. 3—Wing Lake School, NW corner of Wing Lake Rd. and Maple Rd.
- PRECINCT NO. 4—Hickory Grove School on Lahser Rd., between Square Lake and Hickory Grove Rds.
- PRECINCT NO. 5—Bloomfield Hills High School, 4200 Anover Rd.
- PRECINCT NO. 6—Bloomfield Township Fire Station No. 2, on Westview Rd., between Adams Rd. and Squirrel Rd.
- PRECINCT NO. 7—Brother Rice High School on Lahser Rd., between Maple and 14 Mile Rds.
- PRECINCT NO. 8—Bloomfield Village Fire Hall, on Broadway Blvd., East of Lahser and North of Maple Rds.
- PRECINCT NO. 9—Marion High School on Lahser Rd., between Maple and 14 Mile Rds.
- PRECINCT NO. 10—Bloomfield Township Fire Station No. 9, corner of Woodbank and Maple Rds.
- PRECINCT NO. 11—Bloomfield Hills Junior High School, on Quarton Rd. between Telegraph and Wing Lake Rds.
- PRECINCT NO. 12—Washington Irving School, 1830 Square Lake Rd., West of Telegraph Rd.
- PRECINCT NO. 13—Harlan School on Adams Rd., between Worth and Big Beaver Rds.

FOR THE PURPOSE OF PLACING IN NOMINATION BY ALL POLITICAL PARTIES PARTICIPATING THEREIN, CANDIDATES FOR THE FOLLOWING OFFICES, VIZ:

CONSTITUTIONAL CONVENTION DELEGATES
ONE FROM STATE SENATORIAL DISTRICT
ONE FROM STATE REPRESENTATIVE DISTRICT
ALSO ANY ADDITIONAL AMENDMENTS OR PROPOSITIONS THAT MAY BE SUBMITTED

NOTICE RELATIVE TO OPENING AND CLOSING OF THE POLLS.

Election Law, Act 116, P.A. 1954.
Section 720. On the day of any election, the polls shall be opened at 7 o'clock in the forenoon, and shall be continuously open until 8 o'clock in the afternoon and no longer. Every qualified elector present and in line at the polls at the hour prescribed for the closing thereof shall be allowed to vote.

THE POLLS of said election will be open at 7 o'clock a.m. and will remain open until 8 o'clock p.m. of said day of election.

DELORIS V. LITTLE
TOWNSHIP CLERK

BIRMINGHAM

telephone lines

By AL WARNER, Manager

HOW MANY TELEPHONES do you think Michigan Bell serves in our state? The first three people we asked guessed "five hundred thousand," "two million" and "a million." Before you make your guess, here's a clue: in 1955 there were already more than half a million. Well, today there are almost three million! This shows how your telephone company has been building to bring modern, complete telephone service to you—when and where you need it.

AS CHANGEABLE AS THE WEATHER. Our Weatherphone on the new Yellow Pages sign atop our Oakland Blvd. building, is one of the few things as changeable as the weather. This giant "telephone," which stands in clear view of northbound traffic on the John Lodge Expressway, changes color after dark according to weather predictions. Here's what the colors mean:

When our phone is glowing red There's a warmer day ahead. When you see our phone is Blue Cooler weather's bound for you. Yellow means no change at all—Blinking, rain or snow will fall.

THE INSIDE STORY. "What do they carry in those little green telephone trucks?" you may have wondered. Well, each truck carries some 400 separate items—from an extension ladder to screws and plastic wood. Every one of Michigan Bell's more than 2,000 installation-repair trucks is stocked in the same way. In an emergency, where trucks must be rushed from one part of the state to another, any installer-repairman would be completely familiar with the layout of whatever truck he was assigned. These little trucks provide him with all the tools and equipment he needs to give you fast, efficient one-stop service when he visits your home.